



PLATO: AN
EXCITING RANGE
OF STRATEGY
GAMES FROM:



IMPRESSIONS
RIVERBANK HOUSE
PUTNEY BRIDGE APPROACH
LONDON SW6 3JD



BREACH 2

Thank you for buying this game. We hope that you gain many hours of enjoyment from it.

PLATO is a range of top quality strategy games from IMPRESSIONS - a leading supplier of entertainment software. PLATO is dedicated to bringing you the best in strategy games including the very best of such games from the USA. New games are released regularly - please ask your dealer for our new products, or write to us directly.

If you have any comments about the game, please fill in the Registration Card provided and send it back to us - we are always keen to hear from you.

If you have any problems loading the game, please return the disk to your local computer dealer. In case of difficulty, please return the disk to us for replacement.

Licensed from Omnitrend Software Inc. (c) 1989
Published by: IMPRESSIONS
Riverbank House
Putney Bridge Approach
London SW6 3JD

Designed by
Thomas R. Carbone

Written by
Thomas R. Carbone

Computer Graphics by
Maurice Molyneaux

Scenarios Written by
Haywood Nichols

Music Composed by
Bruce MacPherson

Package Coordination by
Sue Unsworth, Pat Stanton

Package Design by
Maurice Molyneaux, Bill Simpson, Maryann Dube, and Pamela Hopson

Copyright Notice

The enclosed software is copyrighted and all rights are reserved by Omnitrend Software. Copying (except for one backup), duplicating, selling, renting, or otherwise distributing this product is a violation of the law.

The enclosed manual is copyrighted and all rights are reserved by Omnitrend Software, Inc. The manual may not, in whole or in part, be copied, photocopied, reproduced, translated, or reduced to any electronic medium or machine-readable form.

Willful violations of the Copyright Law of the United States can result in civil damages of up to \$50,000 in addition to actual damages, plus criminal penalties of up to one year imprisonment and/or a \$10,000 fine. So There.

IBM is a Trademark of International Business Machines, Inc.

Tandy is a trademark of Tandy Corporation.

Amiga is a Trademark of Commodore Business Machines, Inc.

Atari ST is a Trademark of the Atari Corporation.

Breach 2 (c) 1989 Omnitrend Software, Inc.

Printed and Manufactured in the United States of America

Back-up Those Disks!

Breach 2 is not copy protected and we encourage you to back-up your disks prior to play. In fact, if you haven't done so already, now would probably be a good time!

Problems Running Breach 2

If you should experience a problem running this software on your computer, Omnitrend provides telephone assistance several times per week. Call (203) 658-6917 for the current assistance schedule. We regret that our staff cannot answer any questions regarding game hints.

Should you run across a bug in the program, please drop us a note. Be sure to include the version number of the game (which can be found on the game title screen) as well as a description of your computer system. All correspondence and disks should be mailed to:

Omnitrend Software, Inc.
MailStop 400
P.O. Box 733
West Simsbury, CT 06092

Limited Media Warranty

Omnitrend Software, Inc. warrants all media for a period of ninety (90) days from the date of purchase. Should you experience a problem within that period, return the defective disk along with a dated proof of purchase (do not include the manual or the game box). Should you have a problem out of warranty, Omnitrend Software will replace the disk for \$8.00. We regret that we are unable to return any packing materials you use to ship your disk. Omnitrend Software, Inc. will not be responsible for replacing media free of charge within the warranty period that has been subjected to misuse or excessive wear.

Limited Software Warranty

This software and the enclosed manual are sold "As Is" without warranty to their performance. The entire risk as to the results and performance of the program is assumed by you. The Limited Software Warranty is the only warranty of any kind, with expressed or implied, including but not limited to the implied warranties of merchantability and fitness for a particular purpose that is made by Omnitrend Software, Inc.

Neither Omnitrend Software, Inc., nor anyone else who has been involved in the creation, production, or delivery of this program shall be liable for any direct, indirect, or incidental damages arising out the use, the results of use, or inability to use such a product even if Omnitrend Software, Inc. has been advised of the possibility of such damages or claim. Some states do not allow the exclusion or limitation of liability for consequential or incidental damages, so the above limitation may not apply to you.

4	Getting Started Your Computer Starting Breach 2 Creating Your First Squad Leader Starting Your First Game	14	The Game Screen The Map Window The Marine Statistics Window The Time Remaining Display The Buttons Displaying the Map Grid Turning Off the Sound
7	The Scenario The Concept of the Scenario Order of Play Movement Points Deploying a Squad Scenario Ratings Mission Briefing Victory Conditions Advancing Your Squad Leader Saving a Game In Progress Ending a Game Making Your Own Scenarios Chaining Scenarios Skill Levels The Map Grid Playing With Other IGS Products Where To Go From Here	20	Your Marines Basic Characteristics Classes of Marines
		23	Opponents
		25	Objects
		30	Terrain
		35	The Scenario Builder Running the Builder Program The Builder Screen Starting a New Scenario Opening an Existing Scenario Saving a Scenario Closing a Scenario Quitting the Scenario Builder The Cursors The Map Grid The Palette Window The Map Window
11	The Assignment Screen The Assignment Windows If You Have a Mouse If You Don't Have a Mouse The Buttons Just Starting Out?	42	Scenario List
		44	Quick Reference

Your Computer

IBM / Tandy

System Requirements

IBM-PC, Tandy, or Compatible computer with at least 512K of memory, MS-DOS (or PC-DOS) 3.0 or higher, and CGA, EGA, VGA, or Tandy compatible graphics. A Microsoft, Tandy, or compatible mouse is optional. CMS and AdLib sound boards are supported.

Playing Breach 2 on Floppy Disks

Start your computer using DOS or a hard disk. Once you have the "A>" DOS prompt, place your Breach 2 game disk in drive A. Type "BREACH2" and press [return] to start the game. To run the scenario builder, type "BUILDER".

Playing Breach 2 on a Hard Disk

Copy all the files from your Breach 2 disks to your hard disk. Make sure the default drive is set to your hard disk. For example, if your hard disk is drive C, type "C:" and [return]. You will then see a "C>". Type "BREACH2" and press [return] to start the game. To run the scenario builder, type "BUILDER".

Using a Mouse

Breach 2 supports a Microsoft, Tandy, or compatible mouse. Be sure that your mouse driver is installed properly before running the game.

Using the Creative Music System (CMS) or AdLib Sound Board

Breach 2 uses the extensive features of the CMS and AdLib sound boards to produce stereo sound effects. Upon running the game, you will be allowed to select which of these cards you have installed.

Amiga

System Requirements

Any Amiga computer with at least 1 megabyte of memory.

Playing Breach 2 on Floppy Disks

Place the Breach 2 disk in the floppy drive and turn on the computer. When the workbench screen appears, click on the Breach 2 disk icon. A window will open showing the contents of the disk. Double-click on the Breach 2 file icon to begin the game. You should double-click the Scenario Builder icon to run the scenario builder.

Playing Breach 2 on a Hard Disk

Copy all of the files from the Breach 2 disk into a drawer on your hard disk. Double-click on the Breach 2 file icon to begin the game. You should double-click the Scenario Builder icon to run the scenario builder.

Multitasking

If you use your Amiga for multitasking, you will need a method of moving the Breach 2 screens to the back since the screens do not have a normal title bar. The F10 function key will move the game to the background.

Atari ST

System Requirements

Any Atari ST computer with at least 512K of memory and a color monitor.

Playing Breach 2 on Floppy Disks

Place the Breach 2 disk in floppy drive "A" and turn on the computer. When the desktop screen appears, double-click on the Disk Drive "A" icon. A window will open showing the contents of the disk. Double-click on the BREACH2.PRГ file icon to begin the game. Double-click on the "BUILDER PRГ" icon to begin the scenario builder.

Playing Breach 2 on a Hard Disk

Copy all of the files from the Breach2 disk into a folder on your hard disk. Double-click on the BREACH2.PRГ file icon to begin the game. Double-click on the "BUILDER.PRГ" icon to begin the scenario builder.

Starting Breach 2

To begin the game, start the Breach 2 program according to the instructions in the previous section for your computer. The game will require you to enter a word from the manual. Be sure to include all bold faced titles (except for the section title at the very top of the page, the "Getting Started" title on this page for example).

The game will then display the select screen. This screen lists the available scenarios, squad leaders, and games. More on this in the "Select Screen" section of the manual. For now, we will lead you into starting a game quickly so you can see what it looks like.

Creating Your First Squad Leader

Click on the "Create" button in the squad leader window (press "C" if you don't have a mouse). A window will appear allowing you to name a new squad leader character. Type in the name and press the return key. The new squad leader will appear on the list.

Starting Your First Game

Now that you have created a squad leader of your own, let's play a scenario. If you don't have a mouse, skip to the next paragraph. Click on the scenario titled "River Crossing". It should now be highlighted. Click on the squad leader you just created. It should also now be highlighted. Click on the "Make" button in the game window. A window will appear allowing you to enter a name for the game you are about to play. Type in a name and press return. Another window will appear asking for the skill level. Click the mouse pointer on beginner. After a few seconds, the game should appear in the game window. Click on the game and it should be highlighted. Now click on "Play" and the game will begin. Skip the next paragraph (it is for players without a mouse).

Repeatedly press the tab key on your keyboard. You will see a highlight bar move between the three windows. This is how you select which window you want to work with. Press the tab key until the scenario window is selected. Use the up and down arrow keys to highlight the "River Crossing" scenario. Now press the tab key to highlight the squad leader window. Select the squad leader you just created by pressing the down arrow key. Press the "M" key to make a new game. A window will appear allowing you to enter a name for the game you are about to play. Type in a name and press return. Another window will appear asking for the skill level. Press the "B" key for beginner. After a few seconds, the game should appear in the game window. Press tab again to select the game window. Press the down arrow key to select the game you just created. Now press "P" to begin the game.

The screen now showing is the game screen. This is where the battles take place! Before we can get you playing, though, we must outline the way scenarios are played.

The Concept of the Scenario

Scenarios are combat situations you must bring your squad leader into in order to advance him through the ranks. Squad leaders are assigned a squad of up to 9 marines. In order to win the scenario, certain victory conditions must be satisfied. These conditions are different depending on the scenario. Scenarios take place on a playing field that is composed of 50 squares by 50 squares and 5 levels.

Squad Leaders are soldiers of the Federated Worlds Special Forces (FWSF) and operate under the jurisdiction of the Federated Worlds. The Federated Worlds is a government of stars in the local group.

Order of Play

Scenarios are played in rounds that are composed of two phases. First is the player phase followed by the enemy phase. In each of their phases, the player or enemy perform all their movement and combat. Each round consumes 30 seconds of game time (important since scenarios have a time limit).

Movement Points

Most every action the player and enemies perform require movement points. Each marine and enemy are given a certain number of movement points (mp's) at the beginning of each round. Once all of the movement points for a unit have been exhausted, that unit must wait until the next round before doing anything else. Movement points are based on the unit's class, vitality, and encumbrance. A more complete description of this appears later in the section on Marines.

Deploying a Squad

Marines enter a scenario through a special square called the entry square. No two marines or enemies can occupy the same square at the same time, so this square must be clear in order for more marines to enter.

You can continue to move a marine until he runs out of movement points. If you are finished with a marine or you wish to move others and come back to him later, you can. The "Game Screen" section will describe how to do this.

Scenario Ratings

Scenarios are rated to allow you to determine how hard it will be to win. Ratings are (in increasing order of difficulty) Easy, Medium, Hard, Very Hard.

Mission Briefing

Each scenario contains a briefing that you can review at any time. This will detail the background of the scenario as well as possibly containing hints on how to go about completing the mission.

THE SCENARIOS

Victory Conditions

One or more of these conditions will have to be met in order to win:

Rescue Prisoners - You must rescue all the prisoners in the scenario. Rescuing a prisoner means taking them as you would any other object in the game. If this is a victory condition, be sure none of the prisoners are killed or else you will lose.

Capture DataPacks - You must capture all the DataPacks in the scenario. This means you must take and hold them. If this is a victory condition, be sure none of the DataPacks are destroyed or else you will lose.

Destroy DataPacks - Basically the opposite of capturing DataPacks. You must destroy all the DataPacks in the scenario.

Exit Combat Zone - All the surviving marines in your squad must leave the scenario through a special terrain square called an exit square.

Kill n% Opponents - At least n% (it varies by scenario) of the opponents in a scenario must be killed.

Occupy n Occupation Squares - At least n (again, this varies by scenario) occupation squares must be occupied. This means that your squad members must be standing on at least n of a special terrain square called an occupation square at the same time.

All scenarios also have a time limit. Once the time limit is reached, the scenario will end. You must satisfy the victory conditions before this limit is reached.

A mission orders window can be displayed at any time. This window will show the victory conditions and which ones you have already satisfied.

Advancing Your Squad Leader

Your overall objective is to advance your squad leader. You do this by successfully completing scenarios. The more active a squad leader is in battle, the more likely it is he will see some kind of improvement at the end of a successful scenario. Shooting accuracy is important, but cracking and detecting abilities should be honed as well.

Your squad leader begins as an Ensign, and will advance in rank as his abilities progress.



THE SCENARIOS

Saving a Game in Progress

You have the ability to save a game at any point. This means you can stop playing and resume a game later.

Ending a Game

A game will end when the victory conditions are met or your squad leader is killed. If your squad leader dies, the game is erased and the squad leader's statistics will revert to what they were before beginning the game.

Making Your Own Scenarios

You can create new scenarios or modify existing ones by using the scenario builder program. The section "Your Computer" that described how to run the Breach 2 game also describes how to run the scenario builder. There is another section later on in this manual that describes how to use the scenario builder.

Chaining Scenarios

When making scenarios, you can specify that one or more scenarios are to be "chained" together. This means that when one scenario is completed, the game will automatically load the next scenario in the chain. This allows for larger missions that will not fit in the normal space of a single scenario. When chaining, the Squad Leader's condition will carry over to the next scenario. Two things may happen to the rest of the marines; (1) You may be given a new squad or (2) Your squad and their condition will also carry over. Which of these take place depends on how the scenarios were created. Normally, the mission briefing will tell you which will happen.

A Squad Leader that is promoted when chaining from one scenario to another is considered a field promotion. If he is killed in action, or does not complete the scenario, the promotion will be void.

Skill Levels

There are two skill levels you can play, beginner and experienced. The difference between the two levels is the way in which you see the surrounding terrain and the intelligence level of the opponents. If you set the skill level to beginner, all of the squares surrounding your marines will be visible. If you select experienced, you will not be able to see through walls and closed doors.

The Map Grid

When first starting out playing Breach 2, it can sometimes get confusing when moving your marines through the 3-D landscape. Pressing the F6 key when in the game screen will turn on the map grid. This is a grid which will be superimposed over the map only when tracing a path for your marines to move. The grid will help you to see exactly where the paths can be traced.

Playing With Other IGS Products

Interlocking Game System (IGS) is a unique method of allowing separate games to combine with one another to form one huge game. Breach 2 is able to be entered by other Omnitrend IGS games as though they were all one big game. This means your role playing character (in the case of Breach 2 the Squad Leader) can adventure through many games. Breach 2 scenarios can be part of a surface attack in one game or a spaceship boarding sequence in another.

Breach 2 is a non-controlling module, meaning it will be run automatically by another IGS program. Check with your dealer or contact Omnitrend for information about other games that are part of the IGS system.

Where to Go From Here

By now you are probably wondering when you will get to play the game. Well, now that you understand the basic idea behind the scenario, it is just a matter of learning how to control your marines and knowing how the objects and opponents work. You should refer to the section "The Game Screen" to learn about all the different controls. The objects and opponents are described in their own sections. The objects section will list the objects and describe how each is used. The opponents section will describe how each opponent attacks and the best ways to defeat them. An additional section on terrain squares describes each type of terrain, any strategic advantages, and how many movement points it takes to cross.

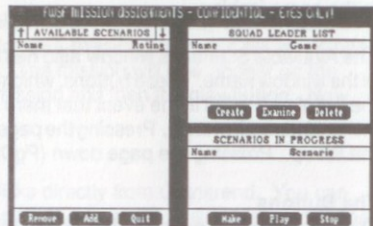
When you are ready to end this sample mission and begin a real game, you will need to refer to the section "The Assignments Screen" which will describe how to manage games and squad leaders. There is also a handy section "The Scenarios" which summarizes the scenarios that come with the game.

Finally, once you get the hang of things, the last section is a quick reference page which lists all of the commands in the game. Try the commands out using the sample game you have already started. The sample scenario is there so that you can get used to the game. When you feel you are ready, begin with one of the easy scenarios and work your way up. You'll have your squad leader to 2nd Lieutenant in no time!

The Assignment Windows

The Assignment Screen is a collection of three windows. The largest window, "Available Scenarios" lists the scenarios available for your Squad Leader to command. Next to the name of each scenario is the difficulty rating.

The next window, titled "Squad Leader List", displays the Squad Leader characters that are available to play. This list will be empty until you create your own Squad Leaders. Next to the Squad Leader name is the name of the scenario they are currently commanding. If they are not currently engaged, this will show as "Available", meaning this Squad Leader can begin a new mission.



The Assignment Screen

The remaining window is titled "Scenarios in Progress". It lists the scenarios that any Squad Leaders are currently commanding. When you start a game, you select the scenario you want to play and the Squad Leader you to command. You will then be able to give the mission a name. This name appears in this list. Next to the name of the scenario in progress (mission) is the name of the scenario it is based on. The list will be empty until you select a Squad Leader and a Scenario to play.

If You Have a Mouse

Any item in a window can be selected by pointing to it and clicking the mouse button. At the bottom of each window is a row of buttons. These can also be selected by pointing to them and clicking.

The Available Scenarios window also has two additional buttons, one on each side of the window name. These buttons, which look like up and down arrows, will "scroll" the list of scenarios in the event that there are more scenarios available than will fit in the window all at once. Clicking the mouse on the up arrow will scroll the list up. Clicking on the down arrow will scroll the list down.

If You Don't Have a Mouse

The "tab" key on the keyboard is used to select the window in which you want to select an item. If you press this key repeatedly you will see the title of each window change color alternately (try it). Once you have selected the window you want, use the up and down arrow keys to select an item. The buttons below each window can be selected by typing the first letter of the button name. For example, to select the "Create" button in the Squad Leader window, press the "C" key. In fact, anytime you encounter buttons with names on them anywhere in the game, you can select them in the same fashion.

The Available Scenarios window also has two additional buttons, one on each side of the window name. These buttons, which look like up and down arrows, will "scroll" the list of scenarios in the event that there are more scenarios available than will fit in the window all at once. Pressing the page up (PgUp) key on the keyboard will scroll the list up. Pressing the page down (PgDn) key will scroll the list down.

The Buttons

The buttons below each window do the following:

Available Scenarios Window

Remove - Removes the selected scenario from the disk.

Add - Access scenarios from additional Breach 2 scenario disk (available directly from Omnitrend). See "Additional Scenario Disks" on page 13.

Quit - End the game.

Squad Leader Window

Create - Creates a new squad leader. You will be required to enter a name for the Squad Leader.

Examine - Shows the current stats for the selected Squad Leader.

Delete - Deletes the Squad Leader from the disk.

Games in Progress Window

Make - Starts a new game. You will be allowed to enter a name for the game.

Play - Play the selected game.

Stop - Stop a game in progress and make the Squad Leader available for other missions.

Just Starting Out?

If you are just beginning to play Breach 2, the first thing you will want to do is make a Squad Leader character. You can use the one you created for the sample scenario or make a new one. If you want to make a new one, select the create button and enter a name. If you want to reuse the sample Squad Leader, you will first need to check and see if he is available. If you competed or lost the sample scenario, he should already be available. If you just saved the sample scenario in progress, you will need to select it and use the stop button.

Once you have a Squad Leader available, select one of the easy scenarios and select the make button. Enter a name for your mission and press return. When asked for the skill level, select beginner. The mission will now appear on the Scenarios in Progress list. Select that mission and then the play button. Now you're ready for battle!

Additional Scenario Disks

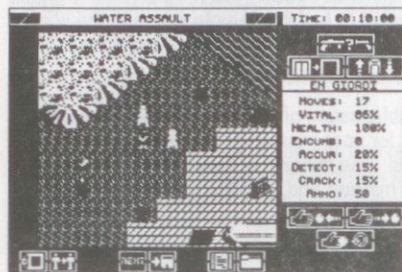
You can purchase additional scenario disks directly from Omnitrend. You can also create scenario disks of your own using the Scenario Builder program. The "Add" button allows you to access these additional scenario disks. The button will do two different things depending on the type of disk drive you are using:

Hard Disk - If you are playing on a hard disk, selecting the "Add" button will copy scenarios from a scenario disk in the first floppy drive onto your hard disk.

Floppy Disk - If you are playing on a floppy disk, selecting the "Add" button will allow you to replace the disk currently in the drive with another scenario disk. If you select a currently available Squad Leader before selecting "Add", you will have the option of moving the Squad Leader to the other scenario disk. For instance, suppose you purchased a scenario disk from Omnitrend. You want to use your favorite Squad Leader "Conrad" with the new missions. You would select "Conrad" from the Squad Leader list (presuming he is available), then select the "Add" button. A window will appear asking you if you want to move "Conrad" to the other scenario disk. If you select the yes button, "Conrad" will be moved to the new disk and you will be able to begin new missions.

The Game Screen

The Game Screen is where your Squad Leader commands his missions. The large map in the center of the screen displays the surrounding terrain, objects, and opponents. The surrounding windows and buttons are used to control the scenario.



The Game Screen

The Map Window

The map window displays the terrain surrounding the currently selected marine, with the marine at the center. The window is broken up into an invisible 9x9 grid in which you can move your marine. Some sections of the terrain may not be visible at the experienced skill level. This is due to the fact that you cannot see through walls or closed doors. At the top of the window is a bar showing the name of the mission being played. Bracketing this name is the rank insignia of the mission Squad Leader. The map window allows you to do the following:

Move The Current Marine - The current marine (at the center of the display) can be moved to another location in the map window. When he reaches his destination, the map window is shifted to place him back at the center of the window and new terrain is displayed. The marine can only be moved onto valid terrain squares (see the Terrain section) that can be seen and only as long as the marine has enough movement points.

Marines that are standing in a square with smoke will not be able to see any of the surrounding squares, and thus, will be unable to move. The map window will appear with the marine at the center and the surrounding squares will all be grey.

Moving the marine is done by tracing a path from the square he is in (at the center) to the destination square. If you don't have a mouse, skip to the next paragraph to learn how to trace a path with the keyboard. Tracing a path with the mouse is done by pointing at the current marine, pressing and holding down the mouse button, then moving the pointer along the path. As you trace the path from one square to the next, the number of movement points remaining (displayed in the marine statistics window) will change. You can backtrack the path if you make a mistake. When the path has been traced to where you want the marine, release the mouse button.

To move a marine using the keyboard, press the "P" key to begin tracing a path. You can now use the keypad keys to trace the path in 8 directions. Each time you press a key, the path will extend one square in that direction. As you trace the path from one square to the next, the number of movement points remaining (displayed in the marine statistics window) will change. You can backtrack the path if you make a mistake. When the path has been traced to where you want the marine, press the middle key on the keypad (the "5" key).

Move the Map Cursor - The map cursor is used for some of the keyboard commands. It is turned on and off by pressing the F6 function key. It will turn on automatically upon starting a scenario if you do not have a mouse. The map cursor appears as small brackets surrounding a map square. The map cursor may be moved around the map by pressing the arrow keys in the direction you want to move the cursor.

Select Another Marine - If there is another marine on the map you want to control, you can select him as follows (If you don't have a mouse, skip to the next paragraph). Point to the marine with the mouse pointer. Hold down the "Alt" key and click the mouse button. That marine will then become the current marine and the map will shift to display him at the center.

To select another marine with the keyboard, first make sure the map cursor is on. The map cursor is turned on and off by pressing the F6 function key. Select the marine by moving the map cursor to his location, then hold down the "Alt" key and press the "Z" key.

Change the Current Marine's Facing - The direction the current marine is facing can be changed as follows. With a mouse, move the pointer to one of the eight squares surrounding the marine, then hold down the shift key and click the mouse button. With the keyboard, move the map cursor to one of the surrounding eight squares, hold down the shift key, then press the "Z" key.

Fire a Weapon - The current marine's armed weapon can be fired at a square as follows. With the mouse, just point to the square and click the button. With the keyboard, move the map cursor to the square and press the "Z" key. In order to fire at a square, the marine must be facing within 45 degrees of the square. Otherwise you will have to change the marine's facing.

The Marine Statistics Window

The window to the right of the map displays statistics about the currently selected marine. At the top of the window is the name of the marine. The stats displayed are:

Movement Points - The number of movement points remaining this round.

Vitality - The current vitality. A warning box will appear here if the vitality drops below 30%.

Health - The current health. A warning box will appear here if the health drops below 50%.

Encumbrance - The current encumbrance level.

Accuracy - The marine's shooting accuracy.

Detect - The percentage chance of this marine making a successful detect with a detector.

Crack - The percentage chance of this marine making a successful crack with a crack unit.

Ammo - The number of rounds available in the marine's ammo clip.

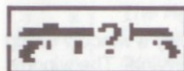
Clicking the mouse at the top of the window (where the marine's name is shown) will display a list of all the marines in your squad. Keyboard players can display this list by pressing the "L" key.

The Time Remaining Display

In the upper right hand corner is a display showing the total remaining time in the mission. When this number reaches 00:00:00, the mission will end. Each round consumes 30 seconds of mission time.

The Buttons

The rest of the game screen contains buttons that perform various functions. You can select a button by clicking on it with the mouse, or by pressing the keyboard key that is assigned to the button.

**The Arm Weapon/Detonate Remotes Button (or "A" Key)**

Pressing the arm weapon button will bring up a window enabling you to select which type of weapon you want the currently selected marine to use when shooting. Displayed will be selections for Unarmed (no weapon), Three types of guns (described in the Objects section), and Psionic Stun (described in the Marines section). If a marine is not carrying a certain type of gun, or does not have psionic ability, the appropriate selection will be unavailable. The word "Unavailable" will appear beneath selections that cannot be selected. To select a weapon with the mouse, just point to the check box to the left of the weapon name and click the mouse button. A check mark will then appear in the box (unless the weapon is unavailable). To select a weapon with the keyboard, press the first letter of the weapon name ("U" for Unarmed, "S" for stun pistol, etc.)

If you hold down the shift key when clicking the mouse button (or pressing the "A" key without a mouse), a window will appear asking you if you wish to detonate remote charges. See the Objects section for more information on remote charges and how to use them.

**The Open Door Button (or "K" Key)**

Pressing the open door button will allow the current marine to open a door he is standing next to. With the mouse (after pressing the open door button), point to the door you want to open and press the mouse button. The door must be next to the current marine. With the keyboard (after pressing the "K" key), press the keypad key corresponding to the direction of the door. For example, if the door is above and to the left, press "7" on the keypad. If it is directly to the right, press "6". If you are on the door, press "5".

**The Use Shaft Button (or "S" Key)**

Pressing the use shaft button will allow the current marine to change levels by using liftshafts or dropshafts (see the Terrain section to identify these shafts).

**The Take Object Button (or "T" Key)**

Pressing the take object button will allow the current marine to take an object he is standing next to or standing on. With the mouse (after pressing the take object button), point to the object you want to take and press the mouse button. The object must be next to the current marine or the marine must be standing on the object. With the keyboard (after pressing the "T" key), press the keypad key corresponding to the direction of the object. For example, if the object is above and to the left, press "7" on the keypad. If it is directly to the right, press "6". If you are on the object, press "5".



The Drop Object Button (or "D" Key)

Pressing the drop object button will display a window listing all of the objects the current marine is carrying. The window is large enough to display up to 5 objects at a time. If the marine is carrying more than 5 objects, you can click on the up and down arrow keys (keyboard players can press the "PgUp" and "PgDn" keys) to scroll the list. Select the object you want by clicking on its name (keyboard users can use the up and down arrow keys). To drop the object, click on the drop button (or "D" key). To cancel the drop, press the cancel button (or "C" key). No more than one object can occupy a single square, so you cannot drop one object on top of another.



The Use Object Button (or "U" Key)

Pressing the use object button will display a window listing all of the objects the current marine is carrying. The window is large enough to display up to 5 objects at a time. If the marine is carrying more than 5 objects, you can click on the up and down arrow keys (keyboard players can press the "PgUp" and "PgDn" keys) to scroll the list. Select the object you want to use by clicking on its name (keyboard users can use the up and down arrow keys). To use the object, click on the window's use button (or "U" key). To cancel, press the cancel button (or "C" key).

What happens now depends on the object you selected to use. See the Objects section for instructions on the use of each object.



The Scale Button (or "W" Key)

Pressing the scale button will change the map into a "wide angle" view of the surrounding terrain. Information for this view is provided by the current marine and other marines moving through this area., detectors, and crack units. Only terrain that has been seen by marines or detected by the detectors and crack units will be displayed.

The wide angle view consists of a 21 x 21 area with the current marine at the center. Terrain squares are represented by colored squares to distinguish the terrain pattern. When scouts use the wide view, all opponents will appear as orange squares. There is also a 40% chance that scouts will pick up hidden proximity charges which will appear as yellow squares.



The Next Marine Button (or "N" Key)

Pressing the next marine button will change the current marine. The current marine advances to the next marine in the squad list. After you have moved to the last marine in the list, pressing this button will cycle back to the first marine in the list. Remember, you can also directly select any marine appearing on the map. See "The Map Window" earlier in this section for more information.



The Next Round Button (or "R" Key)

Pressing the next round button will advance to the enemy combat phase. After the enemy completes movement and combat, the time remaining will decrease by 30 seconds and return you to the beginning of the player phase.



The Save Game Button (or F1 Function Key)

Pressing the save game button will temporarily halt the mission. If you are at the beginning of the player phase, you will be able to save your current location. Otherwise, if you leave the mission at another point in the round, your location will not be saved. Your progress since the last point you saved will be lost.



The Mission Orders Button (or "O" Key)

Pressing the mission orders button will display a window listing the victory conditions that must be met in order to win the scenario. A check box appears to the left of each victory condition. A check mark will appear in the box if the victory condition is satisfied.



The Mission Briefing Button (or "B" Key)

Pressing the mission briefing button will display a window with the mission briefing. You should read the briefing upon beginning the scenario.

Displaying the Map Grid (F7)

Pressing the F7 function key will cause a grid to be placed on the map window that outlines the terrain squares. Beginners will find this useful to help in tracing movement paths. Press this key again to turn off the grid.

Turning Off the Sound (F8)

Pressing the F8 function key will turn off the sound. Pressing the key again will turn it back on.

Basic Characteristics

All marines and Squad Leaders share the following basic characteristics:

Movement Points - Each marine is given a certain number of movement points at the beginning of each round. Almost all of the activities a marine can perform require movement points (MP's). Combat activities such as taking an object, firing the gun, moving, and using an object can all be done in a single round until the movement points are exhausted. If you do not have sufficient MP's for the activity you want to perform, the computer will warn you. It is not necessary for a marine to use all of his movement points.

Unused movement points will not accumulate. A marine with no movement points remaining cannot be selected with the next marine button. When the movement points are exhausted, the computer will automatically select the next marine. If no marines remain with movement points, the player phase will end.

Vitality - Vitality is a measure of how well-rested a marine is. The higher the vitality, the more moves a marine has available in subsequent rounds. If a marine were at the 50% vitality level, he would have 50% of his maximum number of moves available.

At the beginning of a mission, a marine's vitality is always 100%. As a marine moves about, his vitality is reduced at the same rate as his movement points. If a marine with 100% vitality fired a gun (3 mp's), his new vitality would be 97%. Vitality is replenished at the rate of the health percentage divided by 4, which means the maximum rate is 25% per round (100/4).

If a marine's vitality drops to 0%, the marine is considered stunned and he may not move until the next round.

Health - Health is a measurement of the physical condition of the marine. When a marine's health drops to 0%, he has died.

Encumbrance - This is a measure of the load on the marine. Each object the marine is carrying contributes to his encumbrance. The greater the encumbrance, the fewer movement points the marine will have each round. Opponents will be more likely to target a marine that has a heavy load.

Accuracy - This is a measure of the shooting accuracy of the marine. For marines with psionic talent, this is also a measure of the accuracy of psionic stuns.

Detecting - This is a measure of the marine's ability to use a detector.

Cracking - This is a measure of the marine's ability to use a crack unit.

Ammo - This is a count of the total number of ammo rounds in the marine's ammo clip. You can add to the number of rounds by using an ammo pack. The marine will not be able to fire any guns if there are no rounds in the ammo clip.

Classes of Marines

Marines fall into the following classifications:

Squad Leader - The squad leader is your main character. This is the only type of marine that is independent of the missions. Squad Leaders have ranks as follows:

Abbreviation	Rank
EN	Ensign
2L	2nd Lieutenant
1L	1st Lieutenant
LC	Lieutenant Commander
CM	Commander
CP	Captain
CO	Commodore
AD	Admiral
RA	Rear Admiral
VA	Vice Admiral
FA	Fleet Admiral

Newly created Squad Leaders begin as Ensigns. Upon a successful completion of a mission, there is a possibility that the Squad Leader will improve his Accuracy, Cracking, and Detecting skills. In addition, depending on the improvements, he may be promoted in rank. Once the rank of Fleet Admiral is reached, no further promotion is possible.

The chance for advancement depends on how much the Squad Leader participates in combat. In addition, advancement in cracking and detecting skills requires the successful use of these devices by the Squad Leader during the mission.

Once the Squad Leader reaches the rank of Admiral, he has developed a psionic ability that can be used just like the Psionic Talent marines.

The game will keep track of several other statistics for the squad leaders including number of missions, number of kills, and combat time. These stats can be examined from the Assignment Screen. Only stats from completed missions will be saved.

Marauder - The marauder is the basic marine. They carry heavy armor and have a fairly high level of mobility.

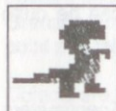
Scout - Scouts have very light armor, making them faster than marauders.

Infiltrator - Infiltrators have medium armor and an average degree of mobility. Infiltrators are very adept at using crack units.

Psionic Talent - Psionic talents wear the same armor as scouts. They have the ability to stun an opponent with their minds. An opponent so stunned will be unable to function in their next phase. In addition, since vitality regenerates slowly, it will take several rounds before the opponent is back to full movement strength. Psionic stuns will not travel through doors or walls. It is possible to stun your own troops, so be careful. You cannot stun any opponent that is not a life form (Gun Emplacements, Robots, Biped, and Seekers). In addition, tanks cannot be stunned as their armor protects the aliens inside.

The Opponents

There are a variety of opponents your squads will encounter during their missions. These opponents are quite intelligent. Their general strategies and method of attack are described in this section.



Beast

The beast is a carnivorous creature resembling a small Tyrannosaurus Rex. Beasts walk on their hind legs. Their attack is by biting and thus, must be in an adjacent square to attack. They are semi-intelligent and can smell out an opponent. They are attracted to loud noises, including gunfire. Fortunately, Beasts are somewhat slow.

Their hide is thick and somewhat resistant to laser fire.



Marauder

Marauders are similar to your own marines. They carry laser pistols and may have grenades, rockets, and other offensive weapons. They may also use camo suits, making them hard for you to see on the map. In fact, marauders with camo suits will be almost impossible to spot in dense terrain such as rubble and jungle. Marauders are

highly intelligent and will use the surrounding terrain to the best of their advantage.



Alien

Alien soldiers are lightly armored and, as a result, are very fast. Aliens almost always have psionic abilities. They have the capability to emit beams of energy from their bodies. These beams have a bit less strength than a standard laser pistol. Aliens may also carry grenades and other offensive weapons. They are fairly intelligent and will use a combination of their beams and psionic attacks very effectively.



Terradon

Terradons are primitive flying animals. They attack by swooping down and biting the victim. Because they are constantly in flight during combat, Terradons are extremely fast and maneuverable. Their scaled body does not, however, provide much protection from attack.



Gun Emplacement

Gun Emplacements are stationary defensive posts that operate by programmed instructions. They will attack any marine that comes within range. They fire a dual beam that has almost twice the power of a laser rifle. Gun Emplacements are stationary and will not move. They can, however, rotate the guns to fire in any direction.



Wadgel

The wadgel is a small, weasel-like creature that attacks by firing quills from its tail. Wadgels are not known for their intelligence. They will attack almost anything moving, except another wadgel. Their small size and low intelligence makes a single wadgel more of a nuisance than a danger. However, in large quantities they can be quite

dangerous.



Tank

Tanks are floating platforms that hover approximately 75 centimeters above the ground. They are controlled by small, highly intelligent alien creatures from a control cavity inside. Tanks have a single-barreled laser cannon and are highly maneuverable. They also have a heavy armor plating, making them difficult to destroy.



Robot

Robots are intelligent, programmed machines. They are all copies of an original that was designed to seek out and destroy an individual named Dr. Smith. During the coping process however, the program was scrambled. Robots will now attack any of your marines, thinking they are this Dr. Smith. They fire a form of plasma energy from their claws. Robots tend to attack with the precision of a well designed computer program. This makes their method of attack somewhat easy to predict. However, due to the power of their weapon, the robot should be taken quite seriously.



Bipod

Bipeds are robots that walk on two legs. They contain a single laser weapon of equivalent power to a laser rifle. Bipeds are semi-intelligent and are capable of using the terrain to their advantage. The armor on a biped is adequate, but not impenetrable.



Seeker

Seekers are small floating orbs of unknown origin. Some say they are remnants from a long dead race. Orbs will destroy any human life form it encounters. They have the ability to warp space around them, allowing them to pass through walls. Orbs usually have psionic abilities and always have a beam weapon that can fire in any direction. Seekers can only be destroyed with remote charges. Any other weapon may temporarily disable the seeker for up to 5 rounds. These are extremely dangerous opponents and should be avoided at all costs.

The Objects

This section lists all of the objects and how they are used. Following the name of each object is the number of encumbrance points (see the Marines section for a description of encumbrance points) they consume and the number of movement points it takes to use. For example, the smoke grenade appears as "Smoke Grenade (Enc 1 - MP 5)". This means a smoke grenade uses 1 encumbrance point and takes 5 movement points to throw.

Objects are used by selecting the use button. See the Game Screen section for a description of this button.



DataPack (Enc 1 - MP 0)

A DataPack is a small cartridge that stores data. Some missions will require that you must either capture or destroy DataPacks. Capturing a DataPack means that they must be taken and held by your marines. There is no way to use the DataPack.



Prisoner (Enc 1 - MP 0)

Some missions will require that you rescue prisoners. Rescuing a prisoner means that they must be taken and held by your marines.



Rocket Launcher (Enc 7 - MP 0)

Rocket launchers are needed to fire rockets. In order to use the launcher to fire a rocket, you should select the rocket itself after pressing the use button.



Smoke Grenade (Enc 1 - MP 5)

Smoke grenades are small palm-sized devices that, when thrown, will explode in a cloud of smoke. This smoke will last the duration of the round. Opponents caught in the smoke cloud will be unable to function. Opponents around the cloud will be unable to see through it. When selecting the smoke grenade from the use button, you will

be allowed to select the square you wish to toss the grenade into. The marine need not be facing this square. Point the mouse at the square and click the mouse button. From the keyboard, use the map cursor to select the square, then press the "Z" key. The throwing range is 3 squares.



Personal Shield (Enc 2 - MP 0)

A personal shield is an electronic device that absorbs energy from laser hits and explosive devices. Its function is automatic once the marine is carrying the shield. Shields normally absorb approximately 20% of the energy from an attack.

**Grav Shoes (Enc 4 - MP 10)**

Grav shoes are electronic boots that, when worn, cause the marine to hover approximately 23 centimeters off the floor. Once worn, moving onto any terrain square consumes only one movement point (2 for diagonal moves). In addition, grav shoes will allow marines to traverse deep water and blank terrain squares. When wearing grav shoes, the marine will be unable to use any other objects except guns.

To wear the grav shoes, select them from the use button. To remove them, select the use button again. Instead of the normal use window appearing, the marine will, instead, remove the grav shoes. Grav shoes will be removed automatically at the end of the marines turn. There is approximately a 5% chance that the marine will be injured upon removing the grav shoes. In addition, the marine will be killed if he removes the grav shoes over deep water or blank terrain squares.

**Neutron Bomb (Enc 2 - MP 6)**

A neutron bomb is a flat, disc shaped object about 31 centimeters in diameter. When thrown, it will explode, releasing radiation deadly to life forms. This explosion will do no damage to the surrounding terrain or mechanical opponents. When selecting the neutron bomb from the use button, you will be allowed to select the square you wish to toss the bomb into. The marine need not be facing this square. Point the mouse at the square and click the mouse button. From the keyboard, use the map cursor to select the square, then press the "Z" key. The throwing range is 3 squares.

**Camouflage Suit (Enc 5 - MP 0)**

A camouflage suit (also known as a "camo suit") will cause the marine to be almost completely invisible when worn (except to seekers which use a form of radar). Marines will be harder for the enemy to detect when on dense terrain like jungles and forest. A suit is worn upon taking it. In addition, due to its bulk, it is impossible to carry a camo suit without actually wearing it.

**Laser Pistol (Enc 1 - MP 3)**

A laser pistol is the standard issue weapon of the FWSF. It can inflict a fair amount of damage to any opponent it hits. A laser pistol is armed by selecting it with the use button or the arm button (both will do the same thing). It consumes no movement points to arm the weapon. The weapon is fired according to the instructions in the Game Screen section of the manual. Firing the weapon takes 3 movement points. Each discharge of the weapon consumes 1 ammo round.

**Laser Rifle (Enc 2 - MP 3)**

A laser rifle is a premium weapon. It can inflict substantially more damage than a laser pistol. A laser rifle is armed by selecting it with the use button or the arm button (both will do the same thing). It consumes no movement points to arm the weapon. The weapon is fired according to the instructions in the Game Screen section of the manual. Firing the weapon takes 3 movement points. Each discharge of the weapon consumes 2 ammo rounds.

Laser rifles can only be fired a maximum of five times per round. After that, they overheat and will not cool down enough to permit operation until the next round.

**Stun Pistol (Enc 1 - MP 3)**

A stun pistol will stun any opponent it hits. It inflicts little damage to the opponent. A stun pistol is armed by selecting it with the use button or the arm button (both will do the same thing). It consumes no movement points to arm the weapon. The weapon is fired according to the instructions in the Game Screen section of the manual. Firing the weapon takes 3 movement points. Each discharge of the weapon consumes 1 ammo round.

**Crack Unit (Enc 9 - MP 9)**

A crack unit is a special device primarily designed for use by the Infiltrator marines (although any marine class can use one). In order to use a crack unit, the marine must be standing on or next to a computer or control panel. If the crack is successful, it will dump all of the floor plans for the current level from the opponent's computer system.

To operate a crack unit, select it from the use button. A window will appear if the crack was not successful. Either way, the map window will clear and display the entire 50x50 level represented by colored squares. If the crack was not successful, only the data gathered by the marines movements will be displayed. Otherwise, all wall squares will be integrated with the data already gathered. When finished viewing the map, press the mouse button or any key on the keyboard.

**Detector (Enc 9 - MP 15)**

A detector is a special device primarily designed for use by the Infiltrator marines (although any marine class can use one). A detector will pick up opponents and proximity charges and relay their positions.

To operate a detector, select it from the use button. A window will appear if the detect was not successful. If successful, the map window will clear and display a 21 x 21 area surrounding the current marine. The surrounding terrain will be represented by colored squares. The bright red squares represent enemy units. The bright yellow squares represent proximity charges. When finished viewing the map, press the mouse button or any key on the keyboard.

**Medikit (Enc 3 - MP 9)**

A medikit is a small, non-reusable package used to heal wounds. When consumed, it has the effect of increasing the health and vitality of the marine by up to 50%. A medikit is used by selecting it with the use button.

**Ammo Pack (Enc 2 - MP 8)**

Ammo packs contain 50 rounds of ammunition to be used with weapons. An ammo pack, when used, will release the rounds into the ammo clips built into every marines uniform. These rounds are actually power charges, making them compatible with all weapons. An ammo pack is used by selecting it with the use button.

**Proximity Charge (Enc 5 - MP 0)**

A proximity charge is a small explosive canister that detonates when any object moves into the same terrain square. Proximity charges have the explosive power of a grenade. The proximity charge will not be visible if placed onto dirt, grass, or high terrain squares. Scouts have a 40% chance of detecting hidden proximity charges (see the

description of the scale button in the Game Screen section for more information).

To use a proximity charge, simply drop it. It will not be armed until the marine moves off of the square. To pick up a proximity charge, move to an adjacent square and take the object as normal.

**Foxhole Maker (Enc 7 - MP 20)**

The foxhole maker is a portable, powered shovel that automatically forms foxholes in grass or dirt. To use the foxhole maker, select it with the use button.

**Chronokleptic Tablet (Enc 1 - MP 1)**

The chronokleptic tablet, if taken, will temporarily accelerate your movement ability. This means that in the following round after taking the tablet, your marine will gain 15 movement points (although it consumes 15 movement points in the current round). This is useful in the event you require a marine to perform some task (such as moving into a combat area, setting a proximity charge, and leaving) that requires more movement points in a single round than normal.

The tablet can be taken by selecting it with the use button.

**Rocket (Enc 3 - MP 5)**

A rocket is basically a propelled grenade. It has a range of 50 terrain squares and the explosive power of a grenade. The marine must be carrying a rocket launcher in order to fire a rocket. When fired, the rocket will travel in the direction the marine is facing. To fire a rocket, select one with the use button. A rocket will continue to travel even

after leaving the map window until it hits a target or the level boundaries.

**Grenade (Enc 1 - MP 5)**

Grenades are small palm-sized devices that, when thrown, will explode where it lands. Grenades are fairly powerful and can level light walls. When selecting the grenade with the use button, you will be allowed to select the square into which you wish to toss the grenade. The marine need not be facing this square. Point the

mouse at the square and click the mouse button. From the keyboard, use the map cursor to select the square, then press the "Z" key. The throwing range is 3 squares.

**Remote Charge (Enc 5 - MP 10)**

Remote charges are radio controlled explosive charges. They will detonate when one of your marines sends a coded destruct command. Remote charges are more powerful than grenades and will actually bring down heavy walls. The charges are armed by selecting them with the use button. This will drop the object in the square in which the marine is standing. The charges can be detonated at any time, from any level, by holding down the shift key and clicking the mouse pointer on the arm button. From the keyboard, hold down the shift key and press "A". All remote charges that have been armed will respond to the destruct signal. It is not possible to selectively detonate armed charges. Any marine can detonate a charge, not just the marine that armed it. You can disarm a charge by taking it.



Terrain Squares

Each square on the scenario map contains one terrain square. The terrain squares are described in this section. Following the name of the terrain is the number of movement points it takes to enter that terrain square. For example, the entry for table appears as "Table (5 mp)", meaning it takes 5 movement points to enter a square with a table.



Heavy Walls (2mp)

Marines can walk on all heavy wall squares, but cannot cross from one side of a wall to another.



Thin Walls (2mp)

Marines can walk on all thin wall squares, but cannot cross from one side of a wall to another.



Shafts (5mp)

Shafts are transport tubes that carry marines from one level to another. You can pass through a shaft square without actually using the shaft. In order to change levels, you will need to select the shaft button when in a shaft square (see the Game Screen section). It is

dangerous to stand in a shaft square from one round to the next. If an enemy decides to use the shaft, the marine will be crushed by the shaft vehicle. Conversely, you can destroy any opponents standing on shaft squares by using the shaft from another level.



Power Door (2mp)

Marines cannot pass through closed power doors. A power door can be opened with the open door button (see the Game Screen section). Opening a power door requires 10 movement points.



Steel Door (2mp)

Marines cannot pass through closed steel doors. A steel door can be opened with the open door button (see the Game Screen section). Opening a steel door requires 5 movement points.



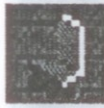
Glass Door (2mp)

Marines cannot pass through closed glass doors. A glass door can be opened with the open door button (see the Game Screen section). Opening a glass door requires 3 movement points.



Table (5mp)

Tables occupy a good portion of the terrain square. You can, however, stand in the same square.



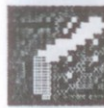
Chair (4mp)

You can traverse squares with a chair.



Controls (5mp)

These are control panels that interface with alien computers.



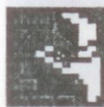
Dresser (6mp)

Dressers occupy a good portion of the terrain square. You can, however, stand in the same square.



Bed (5mp)

Beds occupy a good portion of the terrain square. You can, however, stand in the same square.



Terminal (5mp)

These are terminals that interface with alien computers. Crack units are able to tap into these terminals to download data.



Machine (6mp)

These are some form of alien machine. Their purpose is unknown to you.



Stun Field (8mp)

These are fields of energy. When passing through a stun field, there is a chance the marine will be stunned.



Transporter (6mp)

Transporter pads, if stepped on, will transport you to another area.

**Fuel Tank (0mp)**

Fuel tanks contain highly explosive chemicals. If they are hit with a strong laser blast or grenade, they may explode. Marines cannot enter a square containing a fuel tank.

**Computer (5mp)**

Computers are alien machines and you cannot use or access them. Crack units can interface with these machines to download data.

**Worker (6mp)**

Workers are rather unobtrusive semi-human slaves that function in a zombie-like state. They cannot attack or defend. You can stand in the same square as a worker.

**Lockers (6mp)**

Lockers occupy a good portion of the terrain square. You can, however, stand in the same square.

**Blank (1mp with gravshoes)**

Blank squares are areas of empty space. They usually exist between ships in missions that take place aboard spaceships. Blank squares cannot be entered unless the marine is using gravshoes.

**Metal Floor (3mp)**

Metal floors are steel gratings. The texture of the steel makes walking a bit more effort.

**Plain Floor (2mp)**

Plain floors are usually found inside buildings. They are made of a concrete material.

**Deep Water (1mp with gravshoes)**

Marines cannot enter deep water squares unless they are using gravshoes.

**Shallow Water (4mp)**

Shallow water is water up to one meter deep. Marines can traverse shallow water.

**Dirt/Water (3mp)**

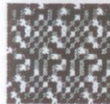
These squares are a combination of dirt and shallow water, a shoreline.

**Grade (5mp)**

Grades are transitions from high terrain to normal terrain. The steep slope makes these hard to walk on.

**High Terrain (3mp)**

High terrain is elevated about 9 meters above the normal landscape. It provides those on it with a strategic advantage. Accuracy in shooting will be increased somewhat when firing from a high terrain position.

**Dirt (2mp)**

Dirt is firmly packed soil and is easy to traverse.

**Grass (2mp)**

Grass is easily traversable.

**Foxhole (6mp)**

Foxholes are small holes in the dirt that provide some cover. Marines or opponents in foxholes will have a defensive advantage, meaning it is harder to hit someone in a foxhole. In addition, damage from grenades and charges will be lessened.

**Light Vegetation (4mp)**

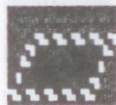
Light vegetation is comprised of tall underbrush and bushes. It can be traversed.

**Jungle (9mp)**

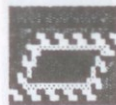
Jungle is very thick vegetation. It can be traversed, but is extremely difficult.

**Forest (6mp)**

Forests are tall trees and thick underbrush. It can be traversed, but with some difficulty.

**Entry/Exit (3mp)**

Entry and exit squares are the means by which to enter and leave the scenario. Marines will enter, one at a time, from the entry square. To exit a marine, leave him on the exit square when selecting the next marine or next round button. There is only one entry and one exit square in a scenario.

**Occupation (2mp)**

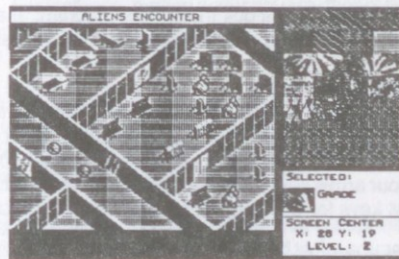
Occupation squares are strategic locations in a mission. The victory conditions may require your marines to hold or occupy a certain number of these squares. Holding an occupation square means simply to stand on it.

**Running The Builder Program**

Breach 2 includes a scenario builder that allows you to modify other scenarios or create your own. See the Getting Started section for information on how to run the builder program on your computer.

The Builder Screen

The builder screen consists of three windows. Upon running the program, only two of these windows will appear at first. The window in the upper right contains terrain squares. This is referred to as the "Palette window". The window below that is the "Info window" and contains information on the scenario map and the currently selected terrain square. The third window is the map window. It does not appear until you open a scenario for editing. A bar above the map window will display the name of the scenario when one is open.



The Scenario Builder Screen

Starting a New Scenario (F1)

The F1 function key will begin a new scenario (provided one is not already open). The map window will appear and the terrain for all levels will default to a plain floor.

Opening an Existing Scenario (F2)

The F2 function key will open an existing scenario for editing. A window will appear displaying names of existing scenarios. The window is large enough to display up to 5 names at a time. If the disk contains more than 5 scenarios, you can click on the up and down arrow keys (keyboard players can press the "PgUp" and "PgDn" keys) to scroll the list. Select the scenario you want to edit by clicking on its name (keyboard users can use the up and down arrow keys). To open the scenario, click on the window's use button (or hold down the "Alt" key and press the "U" key). To cancel, press the cancel button (or hold down the "Alt" key and press the "C" key). To open scenarios on another disk, see page 41 under "Accessing Additional Scenario Disks".

Saving a Scenario (F3)

You can save the currently open scenario to the disk by pressing the F3 function key. This will not close the scenario, allowing you to continue editing. To save the scenario to another disk, see page 41 under "Accessing Additional Scenario Disks".

Closing a Scenario (F4)

Pressing the F4 function key will close the currently open scenario. If you have made any changes since it was last saved, you will have the option to save these changes.

Quitting the Scenario Builder (F5)

Pressing F5 will quit the builder program. If a scenario is open and changes have not been saved, you will have the option to save the changes.

The Cursors (F6)

If you have a mouse you can skip this paragraph. Pressing the F6 function key will display cursors on the map and palette windows. These cursors appear automatically if you do not have a mouse. The cursor on the map window is moved using the four arrow keys. The cursor on the palette window is moved by using the I, J, K, and M keys for Up, Left, Right, and Down respectively.

The Map Grid (F7)

Pressing the F7 function key will draw grid lines in the map window (assuming there is a scenario open). This will make it easier to place the terrain squares in the proper location. Pressing this key again will turn off the grid.

The Palette Window

The palette window displays all the terrain, object, and opponents that can be placed on the map. The "[", "]", and "}" keys will change the palette. The "[", "]", and "}" will move up the list and the "]" will move down the list. The palette types are Walls and Doors, Interior, Exterior, Objects, and Opponents. You can select a palette square with the mouse by pointing to it and pressing the mouse button. Keyboard players select a palette square by moving the palette cursor to the square and pressing the middle key in the keypad (the "5" key). The selected square will appear in the info window.

The Map Window

This is the window where you build the scenario maps. The map window displays a 9x9 section of the map at one time. The info window will show you the current level being displayed and the (x,y) coordinate of the center square. The map window can scroll around the entire 50x50 area of a scenario level by using two sets of keys. The first set scrolls the map one square at a time. This is accomplished by holding down the shift key and pressing the arrow key in the direction you want to scroll. The other set of keys moves the map 8 squares at a time. These keys are "Home", "End", "PgUp", and "PgDn" to move Left, Right, Up, and Down respectively. You can change the level being displayed by using the "+" and "-" keys.

The following commands can be done within the map window:

Placing a Palette Square - The currently selected palette square can be placed on the map by pointing to the map square and pressing the mouse button. Keyboard players can move the map cursor to the square and press the "Z" key. Note that there are certain restrictions on placement. For instance, a deep water square cannot be placed on a map square that has an opponent or object since it cannot be traversed. For details on these restrictions, see the Terrain section.

Special consideration must be made to removing objects and opponents that you have placed in error. The "Blank" squares located on the object and opponent palettes work to erase opponents and objects. If placed on the map, they will not affect the actual terrain but will instead remove the object or opponent.

Adding Text to Map Squares - Map squares can contain a line of text that will appear when a player marine walks over it for the first time. Text can be added to the square by holding down the "Alt" key and clicking the mouse on the square. Keyboard players can hold down the "Alt" key and press the "Z" key after selecting the square with the map cursor. There is a limit of 20 squares per scenario that can have text.

Adding Text to Objects - Objects can contain a line of text that will appear when a player marine take the object for the first time. Text can be added to the object by holding down the "Shift" key and clicking the mouse on the object. Keyboard players can hold down the "Shift" key and press the "Z" key after selecting the object with the map cursor.

Changing a Transporter Destination - When transporters are first placed on the map, the destination (that is, the square the marine will be transported to if he steps on the square) is set to the same square. You will want to change this to another location. The destination can be changed by holding down the "Shift" key and clicking the mouse on the transporter. Keyboard players can hold down the "Shift" key and press the "Z" key after selecting the transporter with the map cursor.

A window will appear showing the destination X, Y, and Level. You can select the coordinate you want to change by clicking on it with the mouse pointer. Keyboard players can use the tab key to move from one to another. The backspace key will erase any numbers in the box, allowing you to type new ones. When finished, click on the Ok button to save or the Cancel button to cancel. Keyboard users should hold down the "Alt" key and type either "O" for Ok or "C" for cancel.

Modifying an Opponent - Opponent characteristics can be modified from the defaults set when the opponent is first placed on the map. Opponents are modified by holding down the "Shift" key and clicking the mouse on the opponent. Keyboard players can hold down the "Shift" key and press the middle key on the keypad (the "5" key) after selecting the opponent with the map cursor.

A window will appear with all of the current stats on the opponent. You can click the mouse on any of the boxes containing numbers to edit the information. Keyboard users can use the "Tab" key to move from one box to the next.

The health check boxes and the check box for psionic ability can be changed by clicking the mouse pointer in the box. Keyboard players can hold down the "Alt" key and press the key corresponding to the first letter appearing to the right of the box. For instance, to change the health status to good, hold down the "Alt" key and press "G". When finished, click on the Ok button. Keyboard users should hold down the "Alt" key and press "O".

Special Note: Setting a Marauder's bonus moves to the maximum will allow him to use a camo suit. Setting an Alien or Marauder's encumbrance level higher will allow them to use more rockets and grenades.

Naming a Scenario ("N")

Pressing the "N" key will display a window allowing you to name the scenario and set the difficulty level. You can click the mouse pointer in a check box to set the difficulty. Keyboard users can hold down the "Alt" key and press the key corresponding to the first letter appearing to the right of the box. For instance, to set the difficulty to medium, hold down the "Alt" key and press "M". You can click the mouse pointer in the check box to set the difficulty. The edit box on the screen allows you to enter the name for the scenario.

When finished, click on the Ok button to save or the Cancel button to cancel. Keyboard users should hold down the "Alt" key and type either "O" for Ok or "C" for cancel.

Setting the Victory Conditions ("V")

Pressing the "V" key will display the victory conditions window. You can click the mouse pointer in the check box to set the conditions. Keyboard users can hold down the "Alt" key and press the key corresponding to the first letter appearing to the right of the box. For instance, to set the "Exit Combat Zone" condition, hold down the "Alt" key and press "E". Note that you cannot select both "Destroy DataPacks" and "Capture DataPacks" since this would not make sense. For the same reason, you cannot select both "Hold n Occupation Squares" and "Exit Combat Zone".

There are several "text boxes" on the screen for entering numbers such as the time limit. These numbers can be changed by clicking the mouse pointer on them (or using the "Tab" key) and then entering the number. If a number already exists in the box, you can use the backspace key to delete the numbers.

When finished, click on the Ok button to save or the Cancel button to cancel. Keyboard users should hold down the "Alt" key and type either "O" for Ok or "C" for cancel.

Filling a Level ("L")

You can fill an entire level with the selected terrain square by pressing the "L" key. You will not be allowed to fill with object, opponents, shafts, transporters, or entry/exit squares.

Filling the Screen ("S")

You can fill the entire screen with the selected terrain square by pressing the "S" key. You will not be allowed to fill with object, opponents, shafts, transporters, or entry/exit squares.

Viewing the Entire Map ("W")

Pressing the "W" key will cause the entire 50x50 level to be displayed in the map window. Each square is represented by a colored block to differentiate the terrain types. Once the level is displayed, you can use the mouse pointer to restore the window to normal, but at a different location. For instance, if you click the mouse pointer in the lower left portion of the level, the map will return to normal; displaying this location. Keyboard users can press any key to return the map to normal. You cannot move to another portion of the level from the wide angle view without a mouse.

Creating Marines ("R")

Pressing the "R" key will display a window for creating new marines. You can click the mouse pointer in a check box to set the class of the marine. Keyboard users can hold down the "Alt" key and press the key corresponding to the first letter appearing to the right of the box. For instance, to set the marine's class to "Infiltrator", hold down the "Alt" key and press "I". The edit box on the screen allows you to enter the name for the marine.

When finished, click on the Ok button to save or the Cancel button to cancel. Keyboard users should hold down the "Alt" key and type either "O" for Ok or "C" for cancel.

Modifying Marines ("F")

Pressing the "F" key will display a list of the marines created so far. The window is large enough to display up to 5 names at a time. If the scenario contains more than 5 marines, you can click on the up and down arrow keys (keyboard players can press the "PgUp" and "PgDn" keys) to scroll the list. Select the marine you want to modify by clicking on his name (keyboard users can use the up and down arrow keys).

There are three ways to modify a marine:

Delete - Click on the delete button (or hold down the "Alt" key and press "D") to delete the selected marine from the scenario.

Outfit - Click on the outfit button (or hold down the "Alt" key and press "O") to outfit a marine. This means you can select objects you want the marine to be carrying into the scenario. A window will appear with a list of all of the objects and the quantity the marine is carrying. You select the quantity to change by clicking on it with the mouse pointer (or using the "Tab" key). At the top of the screen are displays showing the number of free objects (there is a limit of 60 per scenario), the maximum encumbrance of the marine, and the current encumbrance of the marine. You cannot exceed the maximum encumbrance for the marine, give him more than 15 objects, or exceed the 60 object limit for the scenario. When finished, click on the Ok button (or hold down the "Alt" key and press "O").

Examine - Click on the examine button (or hold down the "Alt" key and press "E") to examine and edit the marine stats. You can click the mouse on any of the boxes containing numbers to edit the information. Keyboard users can use the "Tab" key to move from one box to the next. When finished, click on the Ok button (or hold down the "Alt" key and press "O").

When finished, click on the Done button. Keyboard users should hold down the "Alt" key and type "D".

Editing The Briefing ("B")

Pressing the "B" key will display the briefing window. You can type in or edit a briefing for the scenario. The briefing usually contains the background on the mission, plus an overview of the mission objective and possibly some hints.

Chaining Scenarios ("C")

Pressing the "C" key will display a window allowing you to select a scenario to chain to once the currently open scenario is completed. The window is large enough to display up to 5 names at a time. If the disk contains more than 5 scenarios, you can click on the up and down arrow keys (keyboard players can press the "PgUp" and "PgDn" keys) to scroll the list. Select the scenario you want to chain to by clicking on its name (keyboard users can use the up and down arrow keys). To select the scenario, click on the window's chain button (or hold down the "Alt" key and press the "C" key). To cancel, press the remove button (or hold down the "Alt" key and press the "R" key).

Threading

You can "thread" objects, opponents, and terrain text by pressing the "O", "P", and "X" keys respectively. Threading means that the map window center will shift each time you press a thread key, placing objects, opponents, or terrain text at the center. For instance, suppose you have placed 5 objects in the scenario. Repeatedly pressing the "O" key will move the map from one object to another allowing you to locate all of the objects.

Displaying Totals ("T")

Pressing the "T" key will display the total number of objects, opponents, and terrain text you have placed on the map. Click on the Ok button (or hold down the "Alt" key and press "O") when you are finished viewing the totals.

Undo ("U")

Pressing the "U" key will remove the last terrain squares placed since the last time you selected one from the palette.

Accessing Additional Scenario Disks (F9)

You can edit or create new scenarios on another disk by pressing the F9 function key. This will allow you to remove the current disk and replace it with a disk of your own for creating your own scenarios, or a scenario disk from Omnitrend. This really only applies if you are playing on floppy disk. If you are playing on a hard disk, you can still change to another scenario disk on the floppy drive, however there is no need since hard disks allow for so much storage.

Grotto Game Preserve

Difficulty Rating: Easy

Synopsis: A FW scientific shuttle has crashed in the Grotto Game preserve. We have located their position with the craft's emergency beacon. Rescue the scientists on board and destroy all computer datapacks so they don't fall into unfriendly hands.

Strategy: You don't have a lot of time. You must get to the crashed shuttle and rescue the scientists before it sinks. Follow the river to the crash site. Remember, your orders are to rescue and not to waste time killing everything in site.

River Crossing

Difficulty Rating: Easy

Synopsis: The UDP is on one side of the river and you are on the other. Some of your men have been equipped with our new Grav Shoes. Most of the enemies troops don't have this capability. Eliminate at least 50% of the enemy troops.

Strategy: Most of the UDP troops don't have grav shoes so use this to your advantage. Also remember that rockets can hit things past your field of view.

Officer Rescue

Difficulty Rating: Medium

Synopsis: Rescue a captured FWSF tactical officer.

Strategy: Use your smoke grenades to confuse the enemy.

Water Landing

Difficulty Rating: Medium

Synopsis: You're being dropped off a short distance from shore, within wading distance of the coast. Locate the trails that go inland and occupy two important junctions until FW forces arrive.

Strategy: You've been picked up by enemy radar so some UDP troops will probably be waiting for you. Secure the area you'll be dropping into the first round with your scouts so there won't be any surprises.

Enemy Listening Post

Difficulty Rating: Hard

Synopsis: You are ordered to attack a small UDP listening post in the jungles of Kam. Capture any datapacks you find.

Strategy: After capturing the datapacks try to use the UDP's transporter facilities to get to your pickup point.

Hill 501 Assault

Difficulty Rating: Hard

Synopsis: You are to destroy all UDP datapacks that control their defense positions on and around Hill 501.

Strategy: Most of the UDP troops are in foxholes. Use explosives to weaken those positions before using laser fire.

UDP Troop Garrison

Difficulty Rating: Very Hard

Synopsis: We're transporting you right into the interior of a UDP Terror Troop Garrison. You only have 20 min. to eliminate 60% of the enemy, rescue our undercover agent and transport back to you landing craft.

Strategy: Don't rush your squad leader into combat right away, wait a few turns. Use your scouts to soften the enemy up first.

Alien Encounter

Difficulty Rating: Very Hard

Synopsis: An unknown Alien race has kidnapped an engineering officer from one of our Dagger Class vessels. Rescue the officer and retrieve any computer datapacks that may shed some light on these strange alien beings.

Strategy: The aliens 3 level ship is easy to get lost in since all levels are of similar design. Keep track of where you're at and where you're going.

Mazes of Doors

Difficulty Rating: Very Hard

Synopsis: We're sending you into an unknown multi-layered military facility. Retrieve datapacks and prisoners.

Strategy: Divide your squad into two teams so each team will be able to check out the two landing areas.

Seeker and Destroy

Difficulty Rating: Very hard

Synopsis: The UDP has developed a very lethal anti-personnel weapon called the seeker. Destroy the seeker production datapacks that run the factory's computers.

Strategy: Good luck on this assignment, you'll need it. The seekers are tough to destroy and can go almost anywhere, and through anything.

Squad Leader Strategy and Tactics

1. Take your time. In many of the scenarios (but not all) time isn't a big factor. Don't rush head on into situations where members of your squad have low vitality. Waste a turn here and there to bring vitality back up to (or close to) 100%

2. At the beginning of any scenario make sure your landing (entrance) area is secure. Use the scouts in your squad (the ones with large amounts of movement points) to explore your landing grid.

3. When your Squad Leader is just starting out and accuracy and extra movement points are low, use him as a clean-up man to gain advancement and experience. Have another squad member weaken an opponent with a grenade or a laser shot before going in for the kill.

4. Use the crack unit as soon as possible. It's hard to win when you don't know where you're going.

5. Conserve your explosives (grenades, remote charges, etc.) and try to use your lasers when possible.



The following are summaries of the key commands you can use in Breach 2. This is provided for your use once you learn the basics of the game. This section covers only the main commands. There are other key combinations required for most of these main commands. Refer to the specific section of the manual dealing with these commands for more information.

The Assignment Screen

A	Access additional scenario disks
C	Create new Squad Leader
D	Delete selected Squad Leader
E	Examine selected Squad Leader
M	Make a new game
P	Play the selected game
Q	End the game
R	Remove the selected scenario
S	Stop the selected game
Tab	Change the selected window
UpArrow	Move the select bar up
DnArrow	Move the select bar down
PgUp	Scroll the scenario list up
PgDn	Scroll the scenario list down

The Game Screen

A	Arm Weapon/Detonate Remotes
B	Mission Briefing
D	Drop Object
K	Open Door
L	List Squad
N	Next Marine
O	Mission Orders
P	Trace path
R	Next Round
S	Use Shaft
T	Take Object
U	Use Object
W	Change Scale
F1	Save Game
F6	Toggle map cursor
F7	Toggle grid
F8	Toggle sound

The Scenario Builder

B	Edit Briefing
C	Chain Scenario
F	Modify Marines
L	Fill Level
N	Name Scenario
O	Thread Object
P	Thread Opponent
R	Create Marine
S	Fill Screen
T	Display Totals
U	Undo
V	Victory Conditions
W	View Entire Map
X	Thread Text
-	Level Down
+	Level Up
[Previous Palette
]	Next Palette
Home	Scroll Map 8 Squares Left
End	Scroll Map 8 Squares Right
PgUp	Scroll Map 8 Squares Up
PgDn	Scroll Map 8 Squares Down
Shift/Arrow	Scroll Map 1 Square in Direction of Arrow
F1	New scenario
F2	Open existing scenario
F3	Save scenario
F4	Close scenario
F5	Quit Scenario Builder
F6	Toggle cursors
F7	Toggle map grid
F9	Access additional scenario disks

Also from PLATO :

UNIVERSE 3

The third in the very successful Universe Series, which has excited strategy enthusiasts throughout the United States.

Universe 3 is a strategy/role-playing game featuring animated combat and movement, over 70 areas to explore, dozens of characters to meet and dozens of objects to use and trade.

NOW YOU CAN LIVE THE SCIENCE FICTION!



AFFIX
STAMP
HERE

Riverbank House
Putney Bridge Approach
London SW6 3JD

REGISTRATION CARD

Name _____

Address _____

Post Code _____

Game Purchased _____

What did you think of this game? _____
(0 to 10, 10 is best)

Comments _____

Where did you buy this game? _____

Age (please circle): Under 14, 15 to 18, 19 to 22, 23 to 28, 28+

How did you hear about this product?

Review (which magazine?) _____

Advert (which magazine?) _____

Recommendation _____

Shop demo/video _____

Other _____

Which other IMPRESSIONS games do you own?