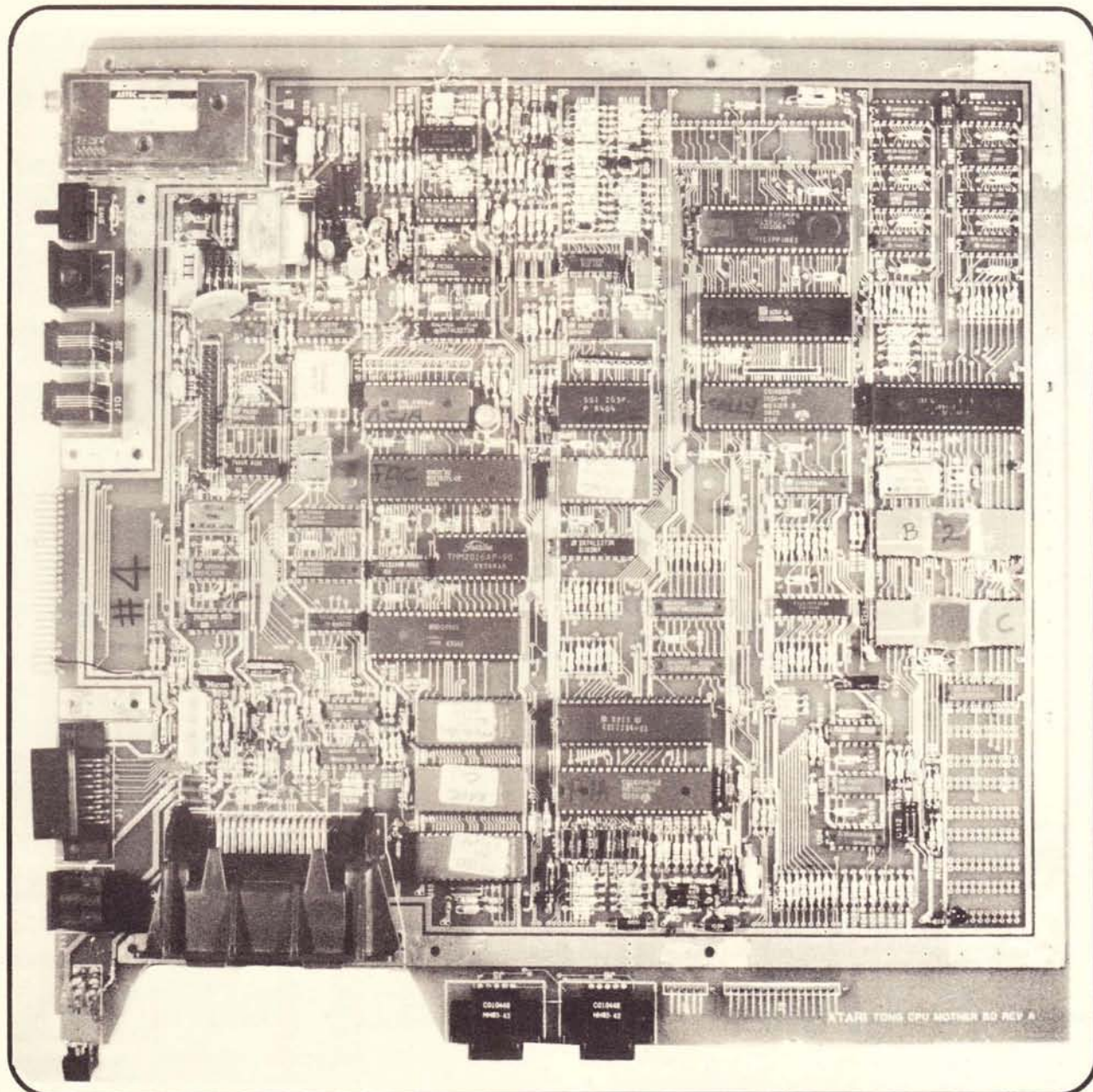


**San
Leandro
Computer
Club**

JOURNAL

October, 1991



1450 XLD

MICROWORLD

1514 University Ave., Berkeley, CA 94705 Information (510) 845-2000

3000 dpi Hell Ulresetter completely set up for Calamus.

\$22,000..Requirements: TT with 8 megs of Ram, 100 meg or larger hd recommended. Produce film or photographic paper for high resolution printing. Call for our catalog detailing color scanning and separation products as well as optical character recognition and color editing.



STeFax, 200 dpi
scanner, send/receive
9600 FAX \$745



Go Atari?
Go Atari?
Go Atari?
Go Atari?
Go Atari?
Go Atari?

Computers

TT030 2/50 \$1879

Mega STE 2 \$1469

1040STE 389

1040 2mg 495

1040 4mg 600

Portfolio 269

WOW

All Atari software 30% off everyday.
Pagestream 2 \$199 Africa Corps \$45
Order any ST/TT software from us and
we will have it or get it for you.

GMA PLOT

The premiere plotter controller software from Germany is now available exclusively from Zephyr. You can now run the eight color sketch mate or any other plotter for design on paper or for cutting vinyl for only \$995. GMAPlot runs with Calamus or Outline and many other programs and allows you to plot housing designs, run an engraver, or cut vinyl signs rapidly. If you are a graphic artist, T-Shirt designer or screen printer this is a must for you. Special pricing: Roland Sketch-Mate (8 1/2"x11") and GMAPlot **\$1595.**

ZakMcCracken
\$12.50

Software Specials

ManiacMansion
\$12.50

Applications

Partner ST	\$40
WordWriter II	\$49
Script	\$50
Wordflair II	\$99
Publisher ST	\$93
1st Word Plus	\$65
DataManager	\$50
SBT 6.31 Accounting	\$220ea
ST Accounts	\$100
Phasar 4.0	\$60
Cornerman	\$30
DBMan 5.2	\$189
Superbase II	\$95
Calamus	\$189
Calamus SL	\$700
Megamax "C"	\$135
Nolator 3	\$500
Tiger Cub	\$65
Dr. T Omega	\$300
Cubase	\$415
MS 30 Fonts P&C	\$135
PCSpeed	\$295
Deluxe Paint	\$69
MegaPaint II	\$135
3D Construction Kit	\$60

Games

Anarchy	\$27
Lemmings	\$35
Populous&SimCity	\$40
SimCity Editor	\$20
M1 Tank Platoon	\$35
Awesome	\$30
KillingGameShow	\$30
PowerMonger	\$40
Shanghai(MahJong)	\$25
Gods	\$35
Cohort	\$40
F29 Retaliator	\$40
IndJones LastCru	\$27
Warlock	\$35
Tetris	\$22
Test Drive 2	\$35
Beltrayal	\$40
PowerPack(TVFoot)	\$40
Wheels of Fire(4pak)	\$40
ChessMaster	\$32
Chess 2150	\$25
Worderland	\$40
North & South	\$30
Nebulous/TowerToppler	\$25
Sentry	\$10

SLGG

special

52 meg Quantum
19 ms HD \$485!

LYNX

GAMES

\$34.95

Permission to reprint uncopyrighted articles in any non-commercial form is permitted without written authorization, provided proper credit is given to the SLCC and the author. Opinions expressed are not necessarily those of the SLCC, its officers, their family members or neighbors and may well be not even those of the authors or editorial staff. People can write strange things late at night.



Lost Editor:
DeWayne Stuart

Self Anointed
Editor:
Jim Hood

8-Bit Editor:
Bob Woolley

San Leandro Computer Club
P.O. Box 1506
San Leandro, CA 94577-0374

An independent, non-profit organization of Atari microcomputer users. Membership provides access to the club print and magnetic libraries, subscription to the Journal and participation in club activities. A membership application appears elsewhere in this issue.

Club Officers:

President	Bob Woolley	865-1672
Vice-President	Jim Hood	534-2197
Treasurer	Glenn Fowler	530-7128
Secretary	Jim Moran	865-6122

Program Chairman:

General & ST Keith Sammons 887-2008

Software Chairmen:

8-Bit	Bob Scholar	232-5330
16-Bit	Jim Ahrens	886-2211

Disk Librarians:

8-Bit	Glenn Fowler	530-7128
16-Bit	Joe Castro	865-1852

Print Librarian:

8 & 16-Bit Einar Andrade 484-4484

Special Interest Groups:

Beginners ST	Jim Moran	865-6122
Beginners 8-Bit	Glen Fowler	530-7128
Telecomm.	DeWayne Stuart	887-3028
Business	Ralf Herman (408)	257-7760
Publishing	Ray Thomas	791-9158

October • 1991

FEATURES

Rantings And Rayvings
Ray Thomas

Pounding on the 8-Bits
Bob Woolley

Our 8-Bit Disks
Bob Scholar

PageStream 2.1, Part 3
Jim Hood

Moran's Makebelieve Minutes
Jim Moran

Real Minutes
*Mark Taylor, STACE,
Sonoma County*

..... 4
..... 7
..... 8
..... 10
..... 11
..... 12

OFFICIAL SLCC BBS

8/16 - Key System (415) 352-5528

FOOTLOOSE & FANCY FREE

16 - STU's Place (415) 782-4402
(415) 887-2158
(415) 785-5367

OFFICIAL ATARI BBS

(408) 745-2191, 3, 4, 5, 6, 8

Non-Member Ad Rates:
Full Page - 3 Issues \$100
Single Issue Prices
Full Page 50
Half Page 30
Quarter Page 18
Business Card Size 5

CALENDAR

Sunday	Monday	Tuesday	Wednesday	Thursday	Friday	Saturday
		Main Meeting 8:00 p.m. San Leandro Library	2	3	4	5
6	7	8	9	10	11	12
13	ST Meeting 8:00 p.m. San Leandro Library	15	ST Beginners* SIG 7:30 p.m.	Publishing SIG 7:30 p.m.	18	19
20	21	22	23	24	Journal Deadline	26
27	28	29	30	31		

Call SIG Leaders to confirm meetings.

RANTINGS AND RAYVINGS

2.1, SERVICE BUREAUS AND TIPS AND TRICKS

By Ray Thomas, DTP Sig Leader

SERVICE BUREAUS FOR ATARI DESKTOP PUBLISHERS

One of the facts of life for Atari desktop publishers is that there are very few service bureaus who know how to output our files to a laser printer.

This tends to "leave us out in the cold" insofar as laser printer output is concerned, unless we have our own laser printer.

ENTER THE "DOS PRINT"

But there is a way, if you know how to do it. Find a service bureau that has an IBM compatible computer which is Postscript compatible and has a 3-1/2 inch drive. That's all you need.

Before you try this, you'll need to take a few discs to the service bureau and have them formatted by the IBM. If you have an IBM format program, you can do that at home. You will need to use these discs when using the IBM, since IBM compatibles can't read or write to our discs, even though we can use theirs as if they were ours.

To do this, get into DOS (they can show you how, if you don't know how), then type "FORMAT B: /N:9 /T:80". Press "return" then follow the prompts on screen. (The 3-1/2" drive is usually their "B" drive, but check this with them. If it's a different drive, replace the "B" in the command with the proper drive designation.) If you'd prefer, you can have them type this in for you. I know when I first



did it, I was nervous about it.

To prepare your files (at home) for this output, simply "print to disc" by going into the "file" menu and clicking on "print document" the same way you would to print through a printer that is attached to your computer.

But before you do this, you must tell your computer you want to print to disc, and to a Postscript printer. Just go to "configure printer" in the "global" menu. Click on "load" and then click on "PSCRIPT.PRT" when the item selector comes up. Click on "OK," and you will now be outputting to a Postscript printer.

Now go to the buttons in the center of the "configure printer" menu and click on "disc file." Then click on "OK."

If you only want to do this occasionally, that's all there is to it. When you print your file, it will go to a disc file that can be printed through an IBM compatible computer. Print this to one of your IBM discs.

If you want to do this all the time, there's one more step while in the "configure printer mode: click on "default," then on "OK." From then on, until

you change it, you will always print to disc for a Postscript printer when you click on "print document."

When you want to print to another printer directly, just repeat the steps you used to set it for the Postscript printer and select the printer driver you wish, then tell it to go to the port to which your printer is attached.

NOW THE EASY PART

Take the disc you've printed to the service bureau you've already scouted, get into DOS, then ask the service bureau clerk for their "DOS print" command. (The commands tend to be different at each place, since they have several different printer systems they use. Once you learn the one they use, it's easy.)

Some bureaus can "batch print," so you can just tell it to print all files by putting *.* in place of the file name. Ask. The laser printer will then print your file(s).

I've used several service bureaus in the Bay Area, including Copymat, Copy Rite or Microworld, which can do it directly on the ST. All are on University Avenue, in Berkeley.

In Hayward, there is Copymat on "A" Street. For those further south, there is Laser Layouts and Winchester Copy Center in Fremont.

I'm sure there are more, but I haven't been able to check them out. Do you know of any that I missed? Let me know.

(Continued on Page 5)

"RAYVINGS" (From Page 4)

Most charge \$8-\$10 per hour in quarter-hour segments for the computer and anywhere from 20¢ to 35¢ for each laser print.

Winchester is unique among them in that it charges 75¢ per copy in addition to the computer rental.

All will help you if you get stuck, unless your problem requires a lot of time, then they charge you a consulting fee. (I've never had a problem that required that.)

MACS TOO!

You can print through Macintosh computers, too. It's just a little more difficult. It requires that either you or the service bureau have a transfer utility program such as "Send PS."

It can only be done on later model Macs which have the IBM Standard disc formatting.

I'm looking into this, and when I find out all the ins and outs of it, I'll let you know.

NO MEETINGS

We haven't been having DTP Sig meetings lately, partly because of lack of attendance, and partly because DeWayne Stuart has been very involved in moving into his new home and consolidating his business there, as well. So probably the best way to disseminate information to desktop publishers is through this column and through phone support.

If I can't answer your question, I can usually direct you to someone who can. I don't know much about DTP programs other than Pagestream, but I know who does.

BIG RADIUS

One of the things I didn't like about Pagestream 1.8 was the radius used on the round cornered boxes. Unfortunately, since the manual got so fragmented with all the troubles and upgrades they were issuing at the time, no one told me you could go into the "object" menu, click on "edit coord" and change the corner radius at will by putting in a new value.

(There must be a round cornered box on the page and it must be selected before the radius values will be shown.)

The default setting for 1.8 was .25, meaning a 1/4" radius, which is much too much for one inch ads and smaller boxes. The default in 2.1 is .1, which is much better, and you can make it anything you want, in either 1.8 or 2.1.

You can't reset the default, so you'll have to change it each time you want a different radius than that preset.

COLUMNS OF FIGURES

One of the problems they haven't solved yet in Pagestream is how to get the decimal points to line up when doing several columns of figures. You had to do it by using several narrow columns specified "block right."

Of course, that takes a lot of time to get the columns lined up vertically across the page.

There are two easy ways to do this: the first way is to put a "guide" at the top of the first column. Then it's easy to move columns left and right without losing the alignment.

The other way is to do the first column, then duplicate it with a .25" horizontal offset, then move it right or left without losing the alignment by using only the middle selector box.

Of course, you could use both methods by creating the columns through the "duplicate" command AFTER putting a guide at the top of the first one.

One of these days, they'll figure out how to put in a "decimal" tab, then it won't be a problem any more.

MULTIPLE LINES ACROSS THE PAGE

You can line up several lines across the page (such as the lines used in coupons in advertisements) by the same method. Line up the first line to the copy, then duplicate it using only the default horizontal offset. Then it's a simple matter to extend the right end to where you want it and the left end, as well.

If you have any tips and tricks you think others might not know about, we'd all appreciate it if you'd call or write. I'm at Box 455, Fremont, CA 94537 and my phone number is (501) 791-9158. I'm home most evenings.

DISC DRIVE FOR SALE
Atari SF 314, 720K Double Sided
Disc Drive for only \$135.00.
Call KEITH SAMMONS
(501) 887-2008

BENEFIT PLAY FOR THE SAN LEANDRO LIBRARY!



The New Earth Theatre
and
The San Leandro Library
present



"THE IMPORTANCE OF BEING EARNEST"

By Oscar Wilde

A tour de force of English comedy! Considered Oscar Wilde's greatest work! An evening of laughter, amusement and intrigue. It's a classic case of mistaken identity and the invention of a mythical character made by a young man who wishes to put off on someone else his own shortcomings. Suitable for the entire family.

Oct. 18, 19, 25, 26, Nov. 1, 2 at 8 P. M.
\$6.00 general, \$5.00 seniors

Oct. 27 — MATINEE at 2 P. M.: \$5.00

Group Discount (10 or more tickets): \$5.00

Opening Night Gala October 18th

Champagne and hors d'oeuvres
following the performance!

Lecture/Carnegie Hall
San Leandro Public Library
300 Estudillo Ave.
San Leandro, California

**Plan a Theatre Event for YOUR group
Buy group discount tickets at \$5.00!**

**ALL PROCEEDS BENEFIT THE SAN LEANDRO PUBLIC LIBRARY
PURCHASE TICKETS AT THE LIBRARY OR CALL 577-3490**

Pounding on the 8-Bits

Buy your own / Share what you know / 8 bits are plenty

October, 1991

by Bob Woolley

Besides my regular "stuff", I have been reviewing a new 8-bit commercial program called ChromaCAD (yes, really - a new 8-bit program!!). It is defined as sculptured-surface modeling software and it does just about what the name implies - allows you to define and display 3D objects on your 800/1200XL/130XE computer. You can display the object from any point of reference and illuminated from any direction. Up to 8 representations of any view can be stored in extended memory - which produces outstanding resolutions for a camera. The package even includes a pair of red/blue 3D glasses for one of the display modes. You may have seen an ad for this product in AIM or CN. Believe it - it does what it says, and very well, I might add. If you don't want to grow old while I finish the article, you can contact Marver Seaman at:

Palette Imaging, Inc.
1 Closter Commons STE 748
Closter, NJ 07624-0400
201+767-3913.

Lately, my other stuff has been this old 1450XLD that I borrowed from Bob Brodie at Atari (thanks, Bob!). Check out this month's cover - that is what the older 1450XLD motherboard looks like (the TONG board). John Russell tells me that the TONG board is the newer version, but I don't agree with him. The TONG board is just too backward compared to the newer 1450XL boards. Then again, we are dealing with Atari here..... At any rate, the TONG board does have the 8040/2797 disk controller built in to it, as well as the modem and speech chip. I had just managed to power up part of the 1450XLD last month - to continue:

By hooking up the +5 volts, I could get the main parts of the computer to come up and run. The drives, modem and speech require the +12 volt and -5 volt lines (not -12 volts..... you hook the -5 to -12 and R7 loses a lot of smoke [don't tell Brodie how I found that out.....]). Anyway, I wired in an old Apple power supply and tried the parallel drives. Nuttin, honey. Hmmmmm. Drive seeks to track 00 and spins OK. No read. Try a couple of TEAC FD55BR drives. Still nuttin. Try a new controller chip. Nope. Try a new cable. NOW, it works! Try a FD55BR. Don't work again..... Seems that these things are set up with the READY line. You must

plug any drive you use to set READY. Then they work just fine. The controller must be set close to the seek time of the TEACs because they make almost no noise at all. Now, I have two drives on the PBI of an 8-bit!

How do they work? The sequence goes something like this: The computer powers up and resets (to track 00) the drives. It then tries to boot the first internal drive. If it can't, it puts up a screen that instructs the user to insert a disk in the D1: internal drive or hit RETURN to disable the PBI drives. If you press RETURN, the machine acts just like any XL with built-in BASIC. If a drive is available on the SIO, then the system boots from there. If not, then BASIC or self-test come up. Works fine. But, who would not use the PBI drives?? I dunno, but some software will not run on them - like SpartaDOS 3.2D. And SynFile 1.02, SynCalc, Castle Wolfenstein (all the guards are dead??), and DOSXE. Some or all of these may work if you disable the internal drives, SpartaDOS does. Things that do work are: DOS 2.0, DOS 2.5, MYDOS 4.5, PrintShop, BasicXE, Spy Hunter, VisiCalc 1.4A, Home Filing Manager, SP Copy, and ZORK.

And, just what do these drives do for you??? Well, they are DD/DS (360K) drives first of all. That makes them equal to an XF551. Just for kicks, I tried an IBM 360K disk - it didn't work, but I can see that nothing is missing in the hardware to keep it from working. Maybe later. How about 3.5 inch drives? Sure, just plug the ST strap and they work pretty well. Same problem as the XF551 - seek time and track capacity. Maybe later. Best of all, these drives will transfer data really, really fast! They don't send and receive data on the SIO at 19.2 Kbits per second, they do a byte at a time at CPU speed! And, just how fast is that? How about loading ZORK from power on to prompt in 14 seconds? To do this, you must format your disks on a US Doubler drive with a sector skew of 2 and sector copy over your data. To make this easy, I have a file on CompuServe in DL3 of ATARI8 called XFINIT.BAS. This simple Basic program allows you to set up any sector sequence you like, from 1 to 17. How about a skew of 1? The 8040/6502 transfer is not fast enough to work with a skew of 1. Too bad. If it did, ZORK would load data twice as fast!

So, with the two PBI drives, you have a nice self-contained computer. Any drives connected to the SIO are bumped up two addresses (D3:, D4:, etc.) and work as they normally would. I need to take a look at the operation of an 850 or an SX212 on the SIO next. Along with possible memory upgrades and other things to twiddle with.....

Next Month.

SOULROW SUBMITION DISK

by Rob Scholze, NJCC 8-bit Software Chairman

This DOM has 6 Games; 3 DEMOS; & 3 UTILities. Almost all appeared in ANTIC Magazine; as noted below. You would be well advised to read all of the published article for any of the programs you like.

NJCC DISK - Sept. 1991

CONTENTS

Games

ROLLOUT;~ like Yahtzee [three]
PEGBOARD;~ Peg Solitaire [by]
BOUNCE;~ Breakout (?) [Rassilon]
CRIBBAGE;~ learn the rules, etc.
ROULETTE;~ Las Vegas style (good!)
BRIK-BAT;~ Super BREAKOUT *options

DEMOS

BIGFOOT;~ Graphics and sound
HANDCAR;~ character set animation
SUNSET;~ good use of color

UTILities

PS.COM;~ hardcopy your screen
ANTICOPY;~ Multiple file copier
TOPSHELF;~ database in BASIC!

PROGRAM COMMENTS

ROLLOUT, PEGBOARD, & BOUNCE are three short BASIC Games by Robert Patton ("Rassilon") from ANTIC for 1/1988. All are reasonably self explanatory; there are no separate DOCs for them on this DOM. All play with a J/S.

ROLLOUT resembles Yahtzee; it's for one or more players. You try to remove numbers between 1 and 10 from the bar (at top of screen) according to the roll of two dice. You remove numbers matching both dice, or any combination that adds up to the sum of both dice. The J/S button rolls the dice. A zero, when prompted for the number of games you wish to play, will end the program. In removing two numbers at once, they disappear from the bar after both are selected. If the selection is wrong, you must clear it before you can roll again. The screen displays a lot of statistics about the play.

PEGBOARD is like peg solitaire, where pegs are removed by jumping them horizontally or vertically. Try to leave just 1 peg in the center (if possible)! Scores depend on the number of pegs left, when you can't jump any more. If multiple jumps are counted as one, it is possible to get the last peg in the center hole in 18 moves.

BOUNCE is like BREAKOUT. Press the button to serve one of 25 balls. You try to knock out all the bricks with the least number of balls. The deflection angle depends on where the ball hits your joystick cursor. If you hold down the button, you move faster, but you may lose control of the next serve.

CRIBBAGE by David Osborn is from ANTIC (5/89). Use the keyboard or a J/S to play against the computer. An easy way to learn the strategy and scoring rules if you are a beginner. To play, just follow the instructions onscreen. When setting the playing speed (0-9) try 5, at first; so that you have time to follow the scoring.

ROULETTE by Bill Marquardt from ANTIC (1/87). ROULETTE.DOC appeared in the same issue. The game and DOC are in the ABACUS library.

BRIK-BAT is an all M/L Game from the ABACUS DOM for Sept. 1991. It is the only program on the back of this disk. It is like breakout with many options. Use J/S. Your opponent can shoot at you and you can fire back. This is a challenging game, in spite of some minor 'bugs'!

BIGFOOT, HANDCAR, & SUNSET are 3 short DEMOS from ANTIC (1/88). They won places in a contest for graphics in BASIC, under 10 lines. They were submitted by Robert Jones, Kevin Packard and Brett Fattorri. BIGFOOT uses transitions and sound cleverly; HANDCAR has character set animation; and SUNSET depends on color (be sure your monitor is adjusted so that the upper part of the screen is sky blue).

The 3 UTILities on this disk have their own DOCs. They are:

PS.COM prints out anything on your monitor's screen, just like the IBM Prntscrn key does.

ANTICOPY.BIN copies multiple, designated, files from disk, with one or two drive systems. By Bryan Schappel and Barry Kolbe; it appeared in ANTIC for 1/88, as BCOPY or ANTIC Supercopy.

TOPSHELF.BAS by Lester Block, also appeared in the 1/88 ANTIC. It is an all-around Data Base program, with many powerful features and it's easy to use. TOPSHELF.DOC, on this disk is taken from the text published with the program; but again, reading the original is highly recommended!

ATY COMPUTER

Voice & Fax
(510) 482-3775

3727 13th Ave., Oakland CA 94610

Coming from S.F. or Napa: go east on Hwy580, exit at Park Blvd., go straight to 2nd light, left turn on 13th Ave.
Coming from Hayward: go west on Hwy580, exit at 14th Ave., go to 2nd light, right turn on 13th Ave.

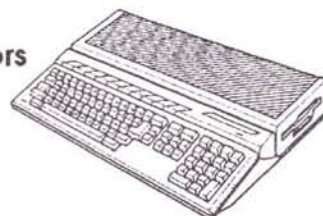
Also in stock are:

520 STFM
1040 STE
Mega 2, 4 ST
Mega 2, 4 STE
Portfolio
Stacy 1, 4
TTO30's
Laser printer
Dot printers
Monitors
Multisync
Disk Drives
Hard Drives
44M Removable
IBM Emulators
Spectre GCR
Modems
DVT VCR
Host Adaptors
Best Trackball
Power Supply
SIMM's
4096 Color Board
Sound Digitizer
Video Digitizer
Hand Scanner
D.E.K.A.
Clock for ST/STE
Hi-Res Mouse
DMA Switch
Synchro Express
TOS Switch
Hundreds of
software titles

520STE Special

- built-in double sided drive • Blitter chip • stereo sound output • 4096 colors • 512K RAM • simm slots for memory upgrade • same 1040STE look

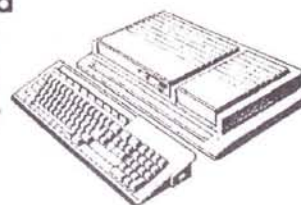
When you buy a 520STE at \$369 we will install the other half meg RAM for only \$10 while supply last. Or if you want more memory, how about 2 meg for \$100 and 4 meg for \$200 installed and tested.



Mega STE Special

- 8/16 mhz speed • built-in 50 meg hard drive • VME bus • stereo sound output • 4096 colors • Blitter chip • socketed for 68881 math-coprocessor • simm slots for memory upgrade • new and improved keyboard

Our new low price for a 2 meg Mega STE is \$1,395 and \$100 more for the 4 meg version.



Graphics Tablet

- use a pen to draw or move things • replace all mouse functions • much better control over the mouse • great for graphics applications • mouse and tablet work together

Our price including the tablet driver is \$214



Phase-4 System

- Prism Paint Drawing Program • Chronos Key Frame Animator • Rosetta-3D Translator/Viewer • Prism Render • Prism Utilities • Prism Tablet Driver

Call for single or package price

New summer hours: M-F 10a.m.-7p.m., Sat 12-6p.m.

Authorized  Dealer and Service Center

We are totally committed to the Atari ST, STE, & TT computers

PageStream 2.1, Part 3

Jim Hood

Keith Sammons sent me on a wild goose chase to Herb's Discount software, looking for toner for my Qume ScripTen laser printer. What he thought were toner cartridges were really font cartridges for the Qume LaserTen, the non-PostScript version of my printer.

While there, I found Herb's also has a lot of Qume font disks, including several Adobe Type 1 PostScript fonts. The disk packages are \$19.50 each or three for \$50.00. I emphasized Adobe because these are genuine Adobe fonts, repackaged by Qume.

If you decide to check them out, look for the blue packages. Other colors indicate fonts for other printers/programs.

The disks are 5 1/4" IBM format. There are 4 (or occasionally 5) disks in each package along with an 80 page ring bound installation manual. Most of the disk space is taken up with the installation stuff those unfortunate IBMers need.

The only things we wise Atari PageStream 2.1ers need from the disks are the xxx.ABF, xxx.AFM and xxx.PFB files. (We also need a way to get the data off those 5 1/4" disks of course.)

ABF files contain screen bitmap fonts in a variety of sizes. I think SoftLogik suggests using only the "12" and "24" size ABF screen fonts. AFM files have character width, spacing and kerning data. PFB files have the actual font outlines. Once we put these files in a folder and add them to the Page-

Stream 2.1 font list, we can use them in any PageStream document, whether it is printed on a PostScript or non-PostScript printer. The important difference being that non-PostScript printers will not have hinting so thin character stems and small characters will not appear as nice as the hinted versions on PostScript printers.

A warning here. If you use an Atari laser printer with UltraScript, or other PostScript emulating printer, which relied on Type 3 downloaded fonts, you might have a problem with Type 1 fonts. That was Adobe's original intention, until Apple and MicroSoft came along with TrueType and caused Adobe to open up their Type 1 font structure.

According to the October *AtariUser*, page 13, an upgraded SLM804/UltraScript driver for PageStream 2.1 is available. This might allow you to download Type 1 fonts within PageStream. Otherwise I should think that you could just skip going to UltraScript and print in native Atari laser mode; but I haven't tried it.

Both Ray Thomas and I have purchased several of these font packages. This page is printed with some of them. The heading is ITC Korinna Kursiv Bold. The body is Goudy Old Style Roman and Italic. The subhead is Helvetica Black and my name is in Helvetica Light.

The heading had style effects "Light" and "Shadow" chosen. Combining these produces a different and more useful result in Version 2.1 than that produced

through Version 1.8. The earlier versions of PageStream just put the halftoning effect of "Light" onto the outlined/drop-shadowed effect of "Shadow". As you can see, Version 2.1 changes the outlined white to a solid black and halftones only the drop shadow.

Color Printers

Tektronix announced a new color ink jet, 300 dpi, Pantone certified, PostScript printer recently. It squirts melted wax onto transparency film or any normal paper. List is just under \$10,000. Its release date has been set back to possibly November.

Hewlett-Packard has released the DeskWriter C color ink jet printer for use with the color Macs. It also prints at 300 dpi to transparency film or any normal paper, but uses a more standard liquid ink. It is not Pantone or PostScript compatible, but its list price is just over \$1000. Fry's has them for \$799. The IBM and Atari compatible version should be showing up any day now. Bob Woolley and I hope Deron Kazmaier is working on a driver for it. Some of the Mac samples look real good.

You can now order a Calcomp thermal dye transfer printer, without PostScript, directly from Calcomp for only \$2,995.

Speaking of color printing, I've tried a couple of simple 4-color and mechanical separations and had no problem with them but I still don't know how to get Version 2.1 to print PostScript color.

Moran's Makebelieve Minutes

Jolly Jim Moran

General Meeting

09/03/91

The meeting was convened at 8:00 PM by President Woolley. All officers were present.

New member John Ross was introduced and welcomed.

The president announced Atari has free tickets for the SEYBOLD COMPUTER PUBLISHING CONFERENCE which will be held in San Jose on October 1st through 4th. ATARI CORPORATION will participate in this conference showing its desktop publishing equipment and its abilities. Contact Jim Hood for more info.



The President also announced that there was an opening in the club hierarchy for a Director of Advertising. There was an immediate rush to the podium to be first in line for this prestigious high paying job. (Fortunately his holiness Woolley was only slightly injured by the mob and as soon as the flow of blood was stopped and the laughter died down he continued the meeting.)

During general discussion it was requested that the SLCC JOURNAL not use red covers on

future issues as they are hard to read. The night's raffle prizes were shown which had a little for everybody and, would you believe, the world's last monitor cover.

It was announced that Greg Pratt has been detained in Los Angeles due to involvement in the Federated law suit and would not be here tonight. In Greg's place from ATARI we have the Director of BS, Bob Brodie, with a whole herd of other ATARI dignitaries, including Vice President of Sales, Don Mandell; Bill Rehbock, Director of something or other; and two other trouble makers, Mike Fulton and John Townsend.

Club member Bob Brodie officially welcomed all our guests from surrounding user

groups. ABACUS, DACE and ST ACE of SONOMA COUNTY all had people in attendance.

Nice to see such a large Atari group; brings back memories of '86 & '87.

Don Mandell, ATARI sales manager, spoke on many subjects relating to ATARI and its people. Don, with help from the rest of his crew at times, discussed some of ATARI's plans and some of their new equipment. One telling point was Don saying that ATARI was a small company and had to concentrate their efforts where they could get the best bang for the buck. Some of the areas that this can

be done is MIDI and DTP. (This statement more than any other tells it like it is and certainly makes more sense than all the BS we have had over the years of all the big ads that would be out THIS year.)

As far as selling through mass market companies is concerned they intend only low end items like the LYNX, PORTFOLIO and 520ST. A large shipment of ST's has arrived so dealers should be able to get some of the new machines soon. They are still working on getting FCC class B approval for the TT. The one now being tested has a 1.44 drive controller chip. The chip for the 1.44 floppy drive will be available to upgrade TT's and MEGA STE's already sold.

The reason ATARI sold their overseas plant was an offer too good to turn down. The profit from selling the plant gives them cash to use in other areas.

A surprise to some (me) was the announcement of a new CD ROM player that will be here in the first quarter of '92. This new player will be a bit smaller than the seldom seen CD504 and will be able to read raw data from other CD ROMs such as IBM and APPLE. The machine will sell for under \$500.

FMS GDOS and it's fancy new font scaling module, is now being packaged here in the states and will be on the market in October.

Cost about \$50.

During a short break Bill Rehbock surprised all with prototypes of the new (?) ST NOTEBOOK and the STYLUS.

Both interesting — and hopefully they will see the light of day sometime in the future.

8 BIT Floppy

Bob Scholar showed part of this month's floppy which is the first made by the combined efforts of the ABACUS user group and the SLCC. The floppy consists of two disks first made up by the OL HACKERS USER GROUP in Oceanside New York. Covering the latest versions of TURBO BASIC. Cost \$5.

The raffle, which will go down in club history as the most crookedly conceived and operated one ever (even worse than Hood's), saw one person walk out with four of the top prizes. (Rumor has it that the guy was Woolley's brother.)

With a final session of question and answers by Brodie and friends the meeting was adjourned at 10:11 PM. for further BS.

Faithfully and accurately transcribed - Jim Moran - Secty.



We were lucky enough to get the October ST ACE newsletter from the Sonoma County User Group. They reviewed our September meeting and I thought you might like to read some realistic reporting of a meeting for a change, so their report follows.

Maybe Moran will be inspired...Naw.

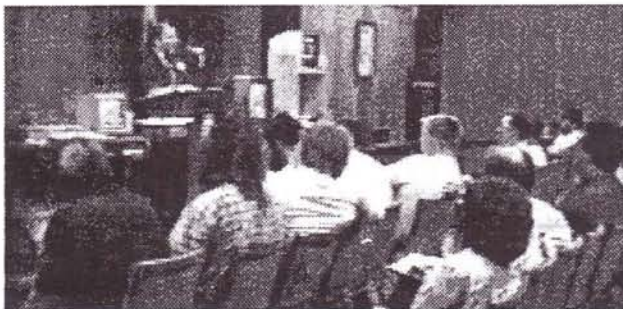
President's Corner by Mark Taylor ST ACE of Sonoma County

I thought this month you would like to hear about our trip to visit the San Leandro Computer Club on Sept. 3rd. A total of about 50-60 people were at the meeting. Greg Pratt, president of Atari, was supposed to speak but was unable to come. His place was taken by Don Mandell, Vice-President of Sales, who was accompanied by Bob Brodie, Bill Rehbock, John Townsend and Mike Fulton, all employed by Atari in various capacities. Those attending from ST ACE besides myself

were

Ken Evans, Hal Andersen, Ray Ransbottom, Bob Moyes, Gloria Neduchal, and Marvin Healey. We realize it was a bad night for most people to come (day after Labor Day), so we had Bob shoot a video of the speech and Q & A session, so you all could pick up on the information that we got.

First some overall impressions: The Vice-President's speech was fairly typical, lots of marketing terms and promises to go after the American market. The phrase that bothered me that he repeated several times was that the Atari computer was "the best kept secret in the world." However, to his credit, he stated that it was his job to try to change that! Bob Brodie was his usual personable self. After the president of SLCC failed to acknowledge the visiting clubs, Bob took the floor, had the clubs identify themselves, and gave us all a warm welcome. As we were



leaving about 10 PM in the middle of a discussion, Bob interrupted himself, said goodbye and wished us a safe journey to Santa Rosa. I can see why Atari recently promoted him from User Group Rep to be in charge of Public Relations.

Another interesting surprise to me was the youthfulness of Bill Rehbock (Director of Technical Services), John Townsend (Senior Software Developer), and Mike Fulton (Developer Support). I have read their official Atari comments on Genie for a long time but never expected them to be in their early 20's (yes, I know the older one gets, the younger everyone else looks!). Don Mandell is obviously one of the "old guard", while the other four represent the "new guard", all of them coming from user/developer backgrounds. I find this encouraging as they come across as "real people." I also enjoyed meeting Alex Yu of ATY computers, who has given many of our members such excellent service at his Oakland store.

Now for some of the specifics we heard:

❑ **MARKETING**...Atari intends to concentrate on the ver-



t i c a l
markets
of Midi,
D T P ,
Educa-
tion, and
E n -
gineer-
ing i.e.
C A D .
A t a r i
c a n n o t

afford the advertising costs to market their computers to the general public against the power of Apple and IBM. By concentrating on the areas above, they feel the public will gradually hear about the power of the Atari machine. An example given was Bell and Howell, where after getting the company to use an Atari to control a \$500,000 machine, the word spread and now 2000 B & H workers are using Ataris.

Atari has changed their mind about mass merchandisers (e.g. Circuit City, K-Mart etc.) carrying any Atari products other than the Portfolio or Lynx. The reason given is that those sales people are really just "order takers", whose job is to sell you what you want, not advise you what to buy. Because of Atari low visibility to the public, this would not have resulted in very many sales.

Atari is compiling a list of dealers by region which should be available soon. We will get a list for the club.

❑ **SERVICE**...Atari is negotiating with General Electric on a contract to service their products nationally, which would help users like ourselves who have no nearby Authorized Service Center.

❑ **CD ROM**...A new CD Rom player will be out in the 1st quarter of 1992, with a smaller case and drivers to read the various formats on the market now. See our video for a lengthy discussion on this product. It will sell for \$400+ dollars.

❑ **PRODUCT AVAILABILITY**...A large ship(ment) of 1040 STe and Mega STe computers has just arrived from Taiwan. They should be in distributor and dealer's hands by next week (my new Mega STe is among them!!). The delay has been due to lack of FCC approval on the Mega STe until May 15, 1991. It takes Atari 90 days from date of approval to arrival at the port of Oakland; that is the time necessary to start up the plants, manufacture and ship a sizable quantity of machines.

This same problem accounts for the shortage of TT030s. Atari expects FCC approval, (type "B" which is for home use; the machine already has type "A" approval for industry use), within 30 days. They must be careful about selling too many type "A" machines, as one complaint of electrical interference can bring a fine of \$80,000 to the dealer, and a serious shutdown of Atari.

One benefit of the delay is that it has given Atari time to design a disk controller chip which can run a 1.44 meg floppy drive. The last motherboard sent to the FCC was of this type so when approval comes, all TTs will have (the option of) 1.44 meg drives. The chip and software will be available to prior TT and Mega STe owners for upgrade. The chip requires a clock speed of 16/32 mhz so older STs and STe with an 8 mhz clock cannot be upgraded, however several 3rd party developers are working on a solution.

□ **MANUFACTURING PLANTS...** Atari sold their plant in Taiwan because they received "an offer they couldn't refuse," an offer that resulted in 55 million dollars cash profit. This gave them the cash needed to embark on new marketing plans, new R & D, etc. Building a plant in Israel is on hold due to difficulties with the Israeli government. It seems Atari wants the Israelis to loan them the money for the plant. In the meantime, Atari is working on owning another plant at some undisclosed location (don't hold your breath).

□ **FSM GDOS...** The long awaited font Scaling Module (outline/vector) version of GDOS will be ready in

two weeks. It will work with all existing GDOS programs as well as new ones. This will mean no more jaggies! It will come with 14 fonts, with 122 more available in the future. Retail price will probably be \$50. See our video for a more extensive explanation.

The most exciting thing to me was to see Atari's new ST notebook computer, ST BOOK. It is 11" x 8" x 2", and weighs under 4 lbs. ST BOOK has a full-size keyboard, 640 x 400 mono LCD screen, unique built-in mouse with no moving parts, and internal space for a fax/modem. It has all standard ST ports (yes Jim, including MIDI). However, it has no cartridge port or external monitor jack. An expansion port allows access to every major

chip inside. I'm sure Dave Small will go to work immediately on that port. I can picture him drooling right now...

ST BOOK will be available in either a 1 or 4 meg ram version (non-expandable), with choice of either a 40, 80, or 120 meg hard drive. A floppy port allows you to plug in your drive to upload (or download) to the HD. The case is a sleek velvety black and very rugged. It might be available by early '92 and the cost is supposed to be under \$2000 (\$1995.95 I bet). Anyway I was pretty impressed, even though I have absolutely no need for one. We have a good shot of it on the video, so you can see what it looks like. I think it shows that Atari as a company is keeping up with state-of-the-art technology. Now if they can only market it decently!

Be sure to come to the next two club meetings to see the video in full, we all need an injection of Atari hope from time to time!



San Leandro Computer Club — Membership Application

Name: _____ Date: _____

Address: _____
(Street) (City) (State) (ZIP)

Home Phone: _____
(Optional)

Membership No.

Fill in as much of the following as you wish.

Interests	<input type="checkbox"/> Business	<input type="checkbox"/> Word Processing	<input type="checkbox"/> Education
	<input type="checkbox"/> Hardware	<input type="checkbox"/> Home Finance	<input type="checkbox"/> Games
	<input type="checkbox"/> Music	<input type="checkbox"/> Graphics	<input type="checkbox"/> _____

To join the SLCC by mail, send \$20.00 to SLCC • PO Box 1506 • San Leandro, CA 94577-0374

ATARI ATARI ATARI

THINK POSITIVE!!!

At Winners Circle Systems we do!
WHERE WE HAVE IT ALL FOR LESS

Monitor not working?
Disk drive failing?
Keyboard stuck?

Atari has an exchange policy.
Bring in your dying or dead parts and
exchange them for working units.
(Exchange fees vary)

Mega 4 STe

16 MHz CPU

Mega 4 STe CPU w/ 45 Mb Hard drive \$1549
w/ Monochrome Monitor \$1679
w/ 12" Color Monitor \$1859
w/ 14" Stereo Color Monitor \$1889



Your choice:

1040STe CPU for \$429
1040STe with Monochrome Monitor for \$589
1040STe with Color Monitor for \$769
1040 STe w/14" Stereo Color Monitor \$799



TT030

Graphics Workstation

TT030/2-50..... \$1889
TT030/4-50.....\$2169
TT030/8-80.....\$2719
PTC1426 Monitor....\$529

All Atari Software

35% off for club members!!
» Please bring your newsletter «

Expires 10-31-1991

The Bay Area Atari Headquarters!!!



WINNERS CIRCLE SYSTEMS

2618 Telegraph Ave. • Berkeley, California • 845-4814 • FAX 845-2400

Authorized Corporate & Institutional Dealer

Monday thru Saturday 10 - 6:00

Haven't been doin' too well back here, have I? Greg didn't show, Michael didn't show,,,, is it me? It isn't them, really. Things just happen.....

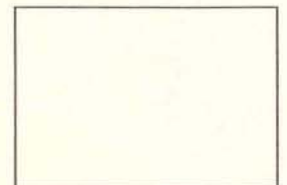
No reason to give up, though. Michael WILL be at the October meeting with his IBM cased 8-bit. He will also have a genlocked 8-bit to fool around with. You know, with the computer output overlaying a video signal, like on an Amiga or ST. Also, I will have a 1450XLD to show, drives and all.

Be there!

Yore Prez.....

**San
Leandro
Computer
Club** P.O. Box 1506
San Leandro, California
94577-0374

First Class Club



First Class Postage

General Meeting
October 1, 1991

First Class Meeting
at the San Leandro
Community Library
300 Estudillo Avenue
First Class Library

Your Name could go HERE!
See Application inside!

First Class Member