

# ATARI-

*There's Magic  
Inside!*





**Free  
Pac-Man\*\***

\* Ask for your FREE PAC-MAN cartridge at time of purchase.

\*\* PAC-MAN and characters are trademarks of Bally Midway Mfg. Co. licensed by Namco America Inc. X-1023-4183

**ATARI®**



**THE ATARI  
2600™ VCS™**



# THE WORLD'S BEST VIDEO GAME IS BETTER THAN EVER!

PACKED-OUT  
WITH PAC-MAN®  
CARTRIDGES!  
PRICED TO  
SELL FOR LESS  
THAN \$100!

## MORE VALUE!

Now the ATARI 2600™ VCS™ game is packed out with everybody's favorite—PAC-MAN®! And it's selling for a new low price—to give your customers more value than ever!

## MORE OPTIONS!

Atari offers a full line of accessories and replacement items, as well as the game cartridges your customers want most, to help you build repeat business.

Now there's a full line of advanced Atari game controllers to keep your customers coming back:

### TRAK-BALL™ CONTROLLERS

Fast action from the arcade favorite.

### REMOTE CONTROL JOYSTICK

Control the action without wires.

### SPACE AGE JOYSTICK

The new standard for design, comfort and response.

## MORE GAMES!

There's an impressive lineup of favorite arcade titles, realistic sports games, and the first game cartridges ever created just for young children. We'll keep the excitement growing all through 1984!

## MORE PROFITS!

Atari keeps you in mind. With quality products designed to build your reputation for sales and service. With game systems that bring customers in, cartridges that keep them coming back, and a complete array of after-market products that stimulate impulse purchases, Atari is your full-line home video game market supplier.



SPACE AGE  
JOYSTICK



REMOTE  
CONTROL  
JOYSTICKS



TRAK-BALL  
CONTROLLER



5. PAC-MAN and characters are trademarks of Bally Midway Mfg. Co. sub-licensed to Atari, Inc. by Namco-America, Inc.



# ATARI SMASH HITS

## THE ATARI® GAME COLLECTION

is unmatched for variety and customer acceptance! The high tech packaging is specially designed to promote impulse buying. But your customers can't buy them if they don't see them, so keep your entire ATARI library out in view!

### SKILL GALLERY

CENTIPEDE™  
DIG DUG™<sup>1</sup>  
JUNGLE HUNT™<sup>2</sup>  
KANGAROO™<sup>3</sup>  
MS. PAC-MAN™<sup>5</sup>  
PAC-MAN™<sup>4</sup>  
SUPER BREAKOUT®  
VIDEO PINBALL™  
MARIO BROS.™<sup>28</sup>  
BY NINTENDO

### SPACE STATION

ASTEROIDS™  
BERZERK™<sup>6</sup>  
DEFENDER™<sup>7</sup>  
GALAXIAN™<sup>8</sup>  
MISSILE COMMAND™  
PHOENIX™<sup>9</sup>  
SPACE INVADERS™<sup>10</sup>  
SPACE WAR  
STAR RAIDERS™  
VANGUARD™<sup>11</sup>  
YARS' REVENGE®  
MOON PATROL™<sup>12</sup>  
JOUST™<sup>13</sup>

### ADVENTURE TERRITORY

E.T.™  
RAIDERS OF THE LOST ARK™<sup>15</sup>  
SWORDQUEST  
EARTH WORLD™  
SWORDQUEST  
FIRE WORLD™  
ADVENTURE  
HAUNTED HOUSE  
SUPERMAN™<sup>16</sup>  
KRULL™<sup>17</sup>

### RACE TRACK

POLE POSITION™<sup>18</sup>  
DODGE'EM™  
INDY 500  
NIGHT DRIVER®  
SLOT RACERS™  
STREET RACER™

### COMBAT ZONE

AIR-SEA BATTLE™  
BATTLEZONE™  
CANYON BOMBER®  
COMBAT  
OUTLAW®  
WARLORDS™

### SPORTS ARENA

REAL SPORTS™  
BASEBALL  
REAL SPORTS™  
BASKETBALL  
REAL SPORTS™  
FOOTBALL  
REAL SPORTS™  
SOCCER  
REAL SPORTS™  
TENNIS  
REAL SPORTS™  
VOLLEYBALL

### ATARI SESAME-STREET LIBRARY

ALPHA BEAM™<sup>19</sup>  
WITH ERNIE™<sup>20</sup>  
BIG BIRD'S EGG CATCH™<sup>20</sup>  
COOKIE MONSTER MUNCH™<sup>20</sup>

### ADDITIONAL CHILDREN'S TITLES

SORCERER'S APPRENTICE™<sup>21</sup>  
SNOOPY™<sup>22</sup> AND THE RED BARON  
PIGS IN SPACE™<sup>23</sup>

### COMING SOON!

PENGO™<sup>24</sup>  
CHOPLIFTER™<sup>26</sup>  
STARGATE™<sup>25</sup>  
MILLIPEDE™  
TAZ™<sup>27</sup>  
CRYSTAL CASTLES™<sup>26</sup>  
DONKEY KONG JR.  
SEA SENTINEL\*  
OSCAR'S TRASH RACE™<sup>20</sup>


1. DIG DUG is created and designed by Namco Ltd., manufactured under license by Atari, Inc. Trademark and © of Namco 1982.
2. JUNGLE HUNT is a trademark and © of Taito America Corporation 1982.
3. KANGAROO is produced under license from Sun Electronics Corporation.
4. MS. PAC-MAN and characters are trademarks of Bally Midway Mfg. Co. licensed by Namco-America, Inc.
5. PAC-MAN and characters are trademarks of Bally Midway Mfg. Co. sub-licensed to Atari, Inc. by Namco-America, Inc.
6. BERZERK is a trademark of Stern Electronics, Inc.
7. DEFENDER is a trademark of Williams Electronics, Inc.
8. GALAXIAN is a trademark of Bally Midway Mfg. Co. licensed by Namco-America, Inc.
9. PHOENIX is a trademark licensed by Centuri, Inc.
10. SPACE INVADERS is a trademark and © of Taito America Corporation 1978.
11. VANGUARD is a trademark licensed by Centuri, Inc.
12. MOON PATROL is a trademark and © of Williams 1982. This cartridge is manufactured under license from Williams Electronics, Inc.

13. JOUST is a trademark and © of Williams 1982. This cartridge is manufactured under license from Williams Electronics, Inc.
14. E.T. and the E.T. character are trademarks of and licensed by Universal City Studios, Inc. © 1982 Universal City Studios, Inc. All rights reserved.
15. RAIDERS OF THE LOST ARK is a trademark of LUCASFILM LTD. used by Atari, Inc. under license.
16. SUPERMAN is a trademark and © of DC Comics, Inc.
17. KRULL is a © 1983 Columbia Pictures Industries, Inc.
18. POLE POSITION is engineered and designed by Namco Ltd., manufactured under license by Atari, Inc. Trademark and © of Namco 1982.
19. ALPHA BEAM WITH ERNIE, BIG BIRD'S EGG CATCH and COOKIE MONSTER MUNCH are © 1983 ATARI/CCW. Muppet Characters © 1983 MUPPETS, INC. All rights reserved. Featuring JIM HENSON™ # SESAME STREET™ + MUPPET™ # Characters. 19 indicates TM of CCW. 20 indicates TM of MUPPETS. # indicates TM of HENSON ASSOCIATES.
21. SORCERER'S APPRENTICE is a trademark and © Walt Disney Productions 1983.
22. SNOOPY is a trademark of United Feature Syndicate, Inc.
23. PIGS IN SPACE is a trademark of Henson Associates, Inc.
24. PENGO is a trademark of SEGA ENTERPRISES, INC. and used by Atari Inc. under license.
25. STARGATE is a trademark and © of Williams 1981 manufactured under license from William Electronics, Inc.
26. CHOPLIFTER is a trademark of Broderband Software, Inc.
27. TAZ is a trademark of Warner Bros. Inc.
28. MARIO BROS. BY NINTENDO are trademarks and © Nintendo 1981.

\*Indicates tentative title.





 **Free  
Pac-Man™**  
THE WORLD'S MOST POPULAR VIDEO GAME!

\* PAC-MAN and characters are trademarks of Bally Midway Mfg. Co. licensed by Namco-America Inc. X-1033B-4/83

**ATARI®**



**ATARI® 5200™  
SUPER SYSTEM**  
THE SUPER SYSTEM  
THAT MEANS SUPER  
SALES!



# THE ULTIMATE HOME VIDEO GAME SYSTEM

## THE ATARI 5200 TRAK-BALL® CONTROLLER:

Here's the high-profile accessory your ATARI 5200 owners are clamoring for!

THE ATARI 5200 TRAK-BALL CONTROLLER delivers...

- the only arcade quality controller with a computerized keypad, plus start, reset and pause functions built-in
- ease of use
- true-to-arcade responsiveness every time!



SENSATIONAL NEW 5200™ SOFTWARE

## SUPER ENGINEERING

The 5200 SuperSystem takes advantage of leading edge technology to deliver the system for video game enthusiasts...

- sleek, high-tech design that's as super to look at as it is to play!
- specially designed graphics chip and 16K of Random Access Memory for the most extraordinary arcade graphics and game play available.
- All-in-one controllers with precision Joystick, Keypad, plus Pause, Start and Reset buttons.
- Expandability to keep the system state-of-the-art for years to come.



5200™ TRAK-BALL® CONTROLLER

## SUPER ACCESSORIES

Upgrade your customers to the 5200 SuperSystem and you'll upgrade them to a series of accessories and replacement items.

## SUPER SOFTWARE

Just as the 5200 ushers in a new era in game hardware, our advanced line of 5200 software brings home new realism with high resolution arcade quality graphics! The growing 5200 game library is alive with the colors, sounds and excitement of the arcade hits!



5200™ SUPERSYSTEM CONSOLE



ALL-IN-ONE PRECISION CONTROLLERS

## SUPER SUPPORT

Exciting P.O.P. is available for all major 5200 product introductions.

5200 product demonstrators are available in both floor and countertop models. Co-op funding is available. National advertising for the ATARI 5200 hardware will make millions of selling impressions in the second quarter alone! Co-op ads are available from the ATARI Co-op advertising group.

## SUPER PROFITS

From low-end to high-end, ATARI keeps you covered. With systems, games, accessories and product innovations that open a wide selling spectrum in every price range. Make ATARI your full-line home video game supplier, and make yourself happy!



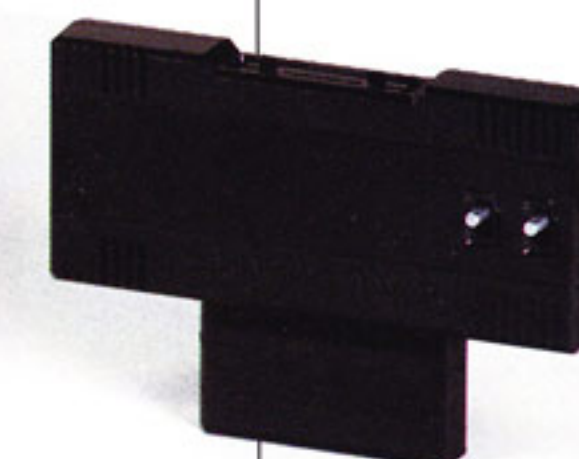
THE VCS CARTRIDGE ADAPTER LETS YOU USE 2600™ SOFTWARE AND CONTROLLERS ON THE 5200™ SUPERSYSTEM

THIS EXPANSION PERIPHERAL MEANS EXPANDED SALES FOR YOU!

## THE ATARI VCS™ CARTRIDGE ADAPTER:

makes the ATARI 5200 game system compatible with all ATARI 2600™ software and controllers.

- snaps easily into the 5200 cartridge slot
- brings hundreds of new playing possibilities to the 5200™ game system.



THE VCS™ CARTRIDGE ADAPTER





# HOT HIT TITLES FOR THE ATARI 5200 SUPER SYSTEM!

## SPACE STATION

ASTEROIDS™  
DEFENDER<sup>1</sup>  
GALAXIAN<sup>2</sup>  
JOUST<sup>3</sup>  
MISSILE  
COMMAND™  
ROBOTRON:2084<sup>4</sup>  
SPACE  
INVADERS<sup>5</sup>  
SPACE  
DUNGEON<sup>6</sup>  
STAR  
RAIDERS™  
VANGUARD<sup>7</sup>  
BERZERK  
(WITH VOICE)<sup>8</sup>

## COMBAT ZONE

COUNTER-  
MEASURE™

## RACE TRACK POLE POSITION<sup>9</sup>

## SPORTS ARENA

REALSPORTS™  
BASEBALL  
(WITH VOICE)  
REALSPORTS  
FOOTBALL  
REALSPORTS  
SOCCER  
REALSPORTS  
TENNIS

## SKILL GALLERY

CENTIPEDE™  
DIG-DUG<sup>10</sup>  
JUNGLE HUNT<sup>11</sup>  
KANGAROO<sup>12</sup>  
MS. PAC-MAN<sup>13</sup>  
PENGO<sup>14</sup>  
QIX<sup>15</sup>  
SUPER  
BREAKOUT®  
MARIO BROS.  
BY NINTENDO<sup>16</sup>  
PAC-MAN<sup>17</sup>

## COMING SOON!

CHOPLIFTER<sup>18</sup>  
STARGATE<sup>19</sup>  
CRYSTAL CASTLES™  
DONKEY KONG JR.  
BY NINTENDO<sup>20</sup>

1. DEFENDER is a trademark and © 1980 Williams, manufactured under license from Williams Electronics, Inc.
2. GALAXIAN is a trademark of Bally Midway Mfg. Co. licensed by Namco-America, Inc.
3. JOUST is a trademark and © of Williams 1982, manufactured under license from Williams Electronics, Inc.
4. ROBOTRON:2084 is a trademark and © of Williams 1982, manufactured under license from Williams Electronics, Inc.
5. SPACE INVADERS is a trademark of Taito America Corporation 1978.
6. SPACE DUNGEON is a trademark and © of Taito America Corporation 1982.
7. VANGUARD is a trademark licensed by Centuri, Inc.
8. BERZERK is a trademark of Stern Electronics, Inc.
9. POLE POSITION is engineered and designed by Namco Ltd., manufactured under license by Atari Inc. Trademark and © of Namco 1982.

10. DIG DUG is created and designed by Namco Ltd., manufactured under license by Atari, Inc. Trademark and © of Namco 1982.
11. JUNGLE HUNT is a trademark and © of Taito America Corporation 1982.
12. KANGAROO is produced under license from Sun Electronics Corporation.
13. MS. PAC-MAN and characters are trademarks of Bally Midway Mfg. Co. sublicensed to Atari, Inc. by Namco-America, Inc.
14. PENGO is a trademark of SEGA ENTERPRISES, INC. used by Atari Inc. under license.
15. QIX
16. Trademarks and © Nintendo 1983.
17. PAC-MAN and characters are trademarks of Bally Midway Mfg. Co. sublicensed to Atari, Inc. by Namco-America Inc.
18. CHOPLIFTER
19. STARGATE
20. Trademarks and © Nintendo 1982, 1983.





# ATARI®



## ATARI® 2600™ REPLACEMENT ACCESSORIES

□ CONVENIENCE FOR YOUR CUSTOMERS

□ ADD-ON SALES FOR YOU

ATARI replacement parts keep your customers' 2600™ VCS™ games in top playing condition.

**A. AC POWER ADAPTER CX261**

\$6.95 suggested retail

**B. TV SWITCHBOX (300 Ohm) CX264**

\$4.95 suggested retail

**C. STANDARD JOYSTICK (SINGLE) CX40**

\$9.95 suggested retail

**D. VIDEO TOUCH PAD™ KEYBOARD CX21**

\$9.95 suggested retail

**E. PADDLE CONTROLLER (PAIR) CX30**

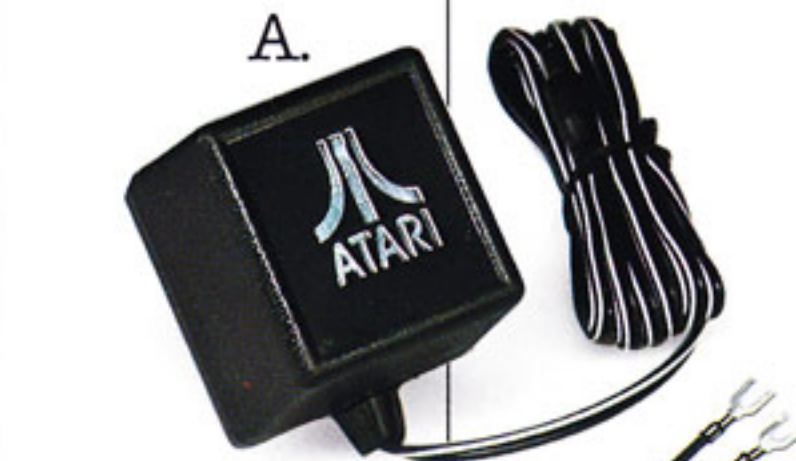
\$14.95 suggested retail

**THE DO-IT-YOURSELF  
JOYSTICK REPAIR KIT  
SAVES YOUR CUSTOMERS  
TIME AND MONEY!**

This convenient package of parts lets your customers put the joy back in their Joysticks for about half of the replacement cost.

**F. JOYSTICK REPAIR KIT CX41**

\$4.50 suggested retail





# SHIPPING SPECIFICATIONS

## STANDARD JOYSTICK CONTROLLERS SINGLE CX40

SHELF PACK	4 1/4" x 3 15/16" x 5 5/8"
	94.27 cu. in.
	7 oz.
CASE PACK (6 units)	12 1/4" x 8 7/8" x 6 5/16"
	686.40 cu. in.
	4 lbs.
MASTER PACK (48 units)	24 7/8" x 18 1/8" x 13 1/4"
	3.46 cu. in.
	36 lbs.

## ATARI® 2600™ A.C. ADAPTER CX261

SHELF PACK	3 1/2" x 2 3/16" x 3 7/16"
	26.37 cu. in.
	9 oz.
CASE PACK	7 9/16" x 7 1/8" x 4 1/8"
	222.62 cu. in.
	3 lb. 13 oz.
MASTER PACK (48 units)	18 1/2" x 14 3/4" x 8 7/8"
	1.4 cu. ft.
	32 lbs.

## 2600™ SWITCH BOX CX262 The CX262 Switch Box has a 300 ohm connection only.

SHELF PACK	3 1/2" x 2 3/16" x 3 7/16"
	23.37 cu. in.
	4 oz.
CASE PACK (6 units)	7 9/16" x 7 1/8" x 4 1/8"
	222.62 cu. in.
	1 lb. 14 oz.
MASTER PACK (48 units)	18 1/2" x 14 3/4" x 8 7/8"
	1.40 cu. ft.
	16 lbs.

## ATARI® STANDARD SWITCH BOX CX264 The CX264 Switch Box has both 75 and 300 ohm connections.

SHELF PACK	3 1/2" x 2 3/16" x 3 7/16"
	26.37 cu. in.
	4 oz.
CASE PACK (6 units)	7 9/16" x 7 1/8" x 4 1/8"
	222.62 cu. in.
	1 lb. 14 oz.
MASTER PACK (48 units)	18 1/2" x 14 3/4" x 8 7/8"
	1.40 cu. ft.
	16 lbs.

NOTE: ALL SIZES ARE LENGTH x WIDTH x DEPTH



ATARI®



# ATARI® 5200™ REPLACEMENT ACCESSORIES

- CONVENIENCE FOR YOUR CUSTOMERS AND
- ADD-ON SALES FOR YOU

These replacement accessories will keep your customers' 5200™ SuperSystems in top playing condition:

POWER  
ADAPTER



AUTOMATIC  
SWITCH BOX



PRECISION  
ALL-IN-ONE GAME  
CONTROLLER



MANUAL  
SWITCH BOX





# SHIPPING SPECIFICATIONS

<b>POWER ADAPTER</b> for use on all 5200™ game consoles. CX521	SHELF PACK	5¾" x 4" x 3"
		69 cu. in.
		2 lbs.
	CASE PACK (4 units)	8½" x 6½" x 6½"
		363.31 cu. in.
		8.5 lbs.
	MASTER PACK (16 units)	17½" x 13½" x 7¼"
		1691 cu. in.
		35.5 lbs.
<b>AUTOMATIC SWITCH BOX</b> for use with 5200 game console models that have four controller ports. CX522  (300/75 Ohm adapter included with switch box)	SHELF PACK	5½" x 19½" x 5½"
		47.26 cu. in.
		.5 lbs.
	CASE PACK (4 units)	6½" x 15½" x 6¼"
		257.44 cu. in.
		2.5 lbs.
	MASTER PACK (48 units)	18½" x 14½" x 13½"
		2.02 cu. ft.
		31.5 lbs.
<b>PRECISION ALL-IN-ONE GAME CONTROLLER</b> for all 5200 game consoles. CX52	SHELF PACK	3½" x 27½" x 9¾"
		94.33 cu. in.
		.625 lbs.
	CASE PACK (4 units)	7½" x 6½" x 10½"
		483.35 cu. in.
		2.75 lbs.
	MASTER PACK (24 units)	19½" x 15½" x 10¾"
		1.93 cu. ft.
		18 lbs.
<b>MANUAL SWITCH BOX</b> for use with 5200 game console models that have two controller ports, and with all ATARI 2600™ game consoles. CX263	SHELF PACK	4¾" x 2½" x 3½"
		23.37 cu. in.
		5 oz.
	CASE PACK (6 units)	9¾" x 7½" x 4½"
		286.00 cu. in.
		2 lb. 2 oz.
	MASTER PACK (108 units)	21½" x 19½" x 13"
		3.23 cu. ft.
		38 lb. 4 oz.
	NOTE: ALL SIZES ARE LENGTH x WIDTH x DEPTH	





ATARI®

**PRO-LINE**

## **ADVANCED CONTROLLERS FOR:**

- THE ATARI 2600 VCS
- ALL ATARI HOME COMPUTERS
- ALL OTHER COMPATIBLE  
GAME SYSTEMS AND HOME  
COMPUTER CONSOLES



# A POWERFUL PROFT-LINE FOR YOU!

## ATARI PRO-LINE CONTROLLERS

ATARI TRAK-BALL™, REMOTE CONTROL JOYSTICKS and THE SPACE AGE JOYSTICK: These three advanced controllers bring exciting performance capabilities to the ATARI 2600™ VCS™ game and all ATARI Home Computers, as well as to other compatible game systems and home computer consoles, including:

- SEARS VIDEO ARCADE†
- COLECO GEMINI
- COMMODORE 64
- COMMODORE VIC 20

And PRO-LINE CONTROLLERS bring exciting sales possibilities to you, by appealing to the strong after market for advanced game accessories. Compatibility with a vast array of game consoles and computer systems, make your PRO-LINE profit potential unlimited!

## ATARI TRAK-BALL® CONTROLLER

This most wanted arcade-style controller is beautifully designed for right and left-hand players and features a unique two-fire button option (unlike competitor's units). TRAK-BALL brings true-to-arcade responsiveness to ATARI's popular library of fast action games. And it's priced for fast turnover action at your sales counter!

- True 360° control
- Precise Player Control
- Superior Design for Comfort
- Easy to Operate
- True arcade responsiveness

## SPACE AGE JOYSTICK

This is the ultimate high performance hand controller and it's priced to move.

Now when your customers come to replace their ATARI Joysticks, you've got an affordable trade-up option with "sure fire" features.

- Unique pistol grip, contoured to fit comfortably in left or right hand
- Fast action trigger-style fire button
- Self-centering control knob allows for 8-directional movement on the screen
- Priced to zap the competition

## REMOTE CONTROL JOYSTICKS

These are far and away the most convenient and innovative game controllers you'll ever experience! Status conscious innovators who visit your store will love them—and buy them!

- Complete mobility up to 20 feet from the computer/game console
- Instant control response
- Rugged, durably designed Joysticks with the familiar ATARI Standard Joystick look
- Packaged set includes two remote Joysticks and one receiver

□ SUPERIOR PRODUCT DESIGN  
 □ SUPERIOR QUALITY BACKED BY CONVENIENT SERVICE  
 □ SUPERIOR ADVERTISING AND PROMOTION SUPPORT  
 □ SUPERIOR MERCHANDISING SUPPORT

**PRO-LINE**



PRO-LINE TRAK-BALL™



SPACE AGE JOYSTICK



REMOTE CONTROL JOYSTICKS







# ATARI SERVICE

FACTORY AUTHORIZED NETWORK

## DO-IT-YOURSELF REPLACEMENT PARTS







# ATARI SERVICE

FACTORY AUTHORIZED NETWORK

## DO-IT-YOURSELF REPLACEMENT PARTS

### Atari Service Replacement Parts ...The Authentic Do-It-Yourself Parts.

ATARI SERVICE "DO-IT-YOURSELF" REPLACEMENT PARTS can help your business in many ways. They can help you increase customer satisfaction by meeting after sales needs. You can expand your ATARI sales base, generate healthy profits on repeat business and reduce the need for returned product.

### Atari Service "Do-It-Yourself" Replacement Parts Come in Complete Packages.

Every ATARI SERVICE "DO-IT-YOURSELF" REPLACEMENT PART comes in its own dramatically designed package complete with easy-to-follow instructions, consumer difficulty rating and a description of the tools needed to do the job.

#### DIFFICULTY OF REPAIR

- Easy
- Average
- Difficult
- Very Difficult

#### EQUIPMENT NEEDED



Phillips  
Screwdriver

Needle-nose  
Pliers

Soldering Gun  
Solder

#### PACKAGE REPAIR KEY

Key on package indicates to consumer ease of use.

- CX30 PADDLE CONTROLLERS POTENTIOMETERS (2)
- 2600/2600A POWER JACK
- COAXIAL CABLE
- CX40 JOYSTICK CABLE
- CX30 PADDLE CONTROLLER CABLE
- 2600/2600A MOMENTARY SWITCH/SLIDE SWITCH
- 9-PIN SOCKETS (2)
- CX40 JOYSTICK INSERT
- CX40 JOYSTICK REPAIR KIT
- CX40 PRINTED CIRCUIT BOARD
- 825 PRINTER RIBBON
- 1025 PRINTER RIBBON

### ATARI TEST CONSOLE

#### The "Do-It-Yourself" Way to Increase Your Atari "Do-It-Yourself" Sales.

The ATARI Test Console helps customers identify accessory failures all by themselves. Place the console by your ATARI "DO-IT-YOURSELF" display, and watch the sales ring through your cash register.



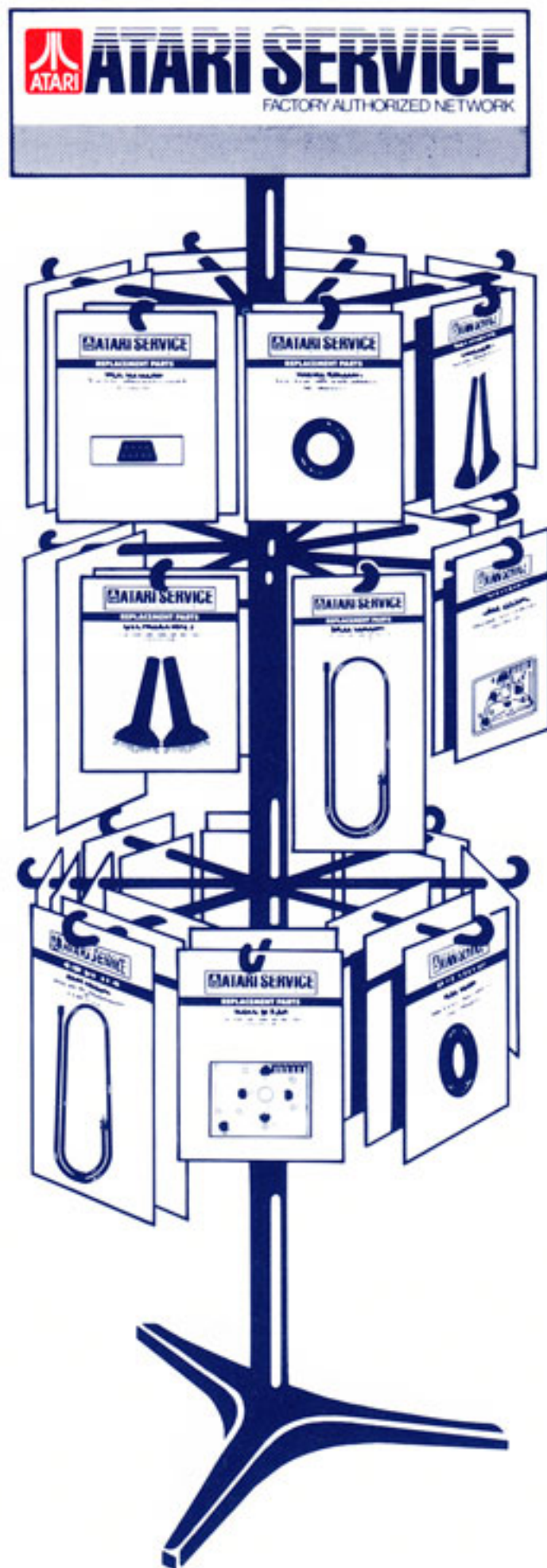




# ATARI SERVICE

FACTORY AUTHORIZED NETWORK

## DISPLAY OPTIONS



### FLOOR RACK DISPLAY

Aluminum 1" Center Pole  
60" High, 24" Diameter  
Full Color Graphics



### FREE PEGBOARD HEADER

Cardboard,  
44<sup>5</sup>/<sub>8</sub>" High, 21" Wide  
Easily Adapts to Existing Space

### DO-IT-YOURSELF STARTER KIT

Part Number	Description	Starter Kit Quantities	
		FK100326 Floor Rack	FK100327 Pegboard
FK100304	CX30 Paddle Controller Potentiometers (2)	12	12
FK100308	Power Jack	12	12
FK100310	Coaxial Cable	6	6
FK100306	CX40 Joystick Cable	6	6
FK100305	CX30 Paddle Controller Cable	6	6
FK100309	Momentary Switch/ Slide Switch—1 of each	12	12
FK100307	9-pin Sockets (2)	12	12
FK100303	CX40 Joystick Insert	48	12
FK100172	CX40 Joystick Repair Kit	24	12
FK100175	CX40 Printed Circuit Board	12	12
FK100312	825 Printer Ribbon	12	12
FK100313	1025 Printer Ribbon	12	12
CAO20528-01	ATARI TEST CONSOLE	1	—
FC100289	DIY Floor Display Rack	1	—
FC100325	DIY Pegboard Header	—	1



## WEIGHTS & MEASURES

Part Number	Description	Suggested Retail	Weight Per Unit (oz.)	Quantity Per Carton*	Carton Dimensions LxWxH	Cubic Feet	Carton Weight (oz.)
FK100304	CX30 Paddle Controller Potentiometers (2)	3.49	1.25	12	11.5x6.5x10"	0.43	23
FK100308	Power Jack	.99	0.50	12	11.5x6.5x10"	0.43	14
FK100310	Coaxial Cable	2.98	4.00	6	11.5x6.5x10"	0.43	32
FK100306	CX40 Joystick Cable	2.98	2.50	6	11.5x6.5x10"	0.43	23
FK100305	CX30 Paddle Controller Cable	3.98	4.00	6	11.5x6.5x10"	0.43	32
FK100309	Momentary Switch/Slide Switch -1 of each	2.49	0.75	12	11.5x6.5x10"	0.43	17
FK100307	9-pin Sockets (2)	2.98	0.75	12	11.5x6.5x10"	0.43	17
FK100303	CX40 Joystick Insert	1.29	1.00	12	11.5x6.5x10"	0.43	20
FK100172	CX40 Joystick Repair Kit	2.99	3.00	12	11.5x6.5x10"	0.43	44
FK100175	CX40 Printed Circuit Board	1.99	0.50	12	11.5x6.5x10"	0.43	14
FK100312	825 Printer Ribbon	6.99	2.00	12	11.5x6.5x10"	0.43	32
FK100313	1025 Printer Ribbon	6.99	1.00	12	11.5x6.5x10"	0.43	20
CAO20528-01	ATARI TEST CONSOLE	**	60.00	1	16x9x4.5"	0.38	60
FC100289	DIY Floor Rack Display	**	113.00	1	26x21x4"	1.26	113
FC100325	DIY Pegboard Display Header	**	16.00	1	21x9.5x1"	0.12	16

\*Must be ordered in multiples of full carton quantity.

\*\*Atari Service<sup>SM</sup> reserves the right to change specifications at any time and without prior notification.

For additional information phone:  
 Outside California (800) 538-1638  
 Inside California (800) 672-1447





ATARI®

# CHOPLIFTER\*

DEMONSTRATE YOUR  
HEROISM BY RESCUING  
THE HOSTAGES!

- COMPUTER GAME OF  
THE YEAR
- Gripping Action
- Progressively Chal-  
lenging Game Play
- Action-Packed  
Realism – Billboard,  
Videogaming  
Illustrated

COMING  
SOON!



## GAME PLAY



Sixty-four United Nations diplomats have been taken hostage by the Bungling Empire. Your assignment: Use strategic planning and an armed helicopter to rescue the hostages and transport them to safety. Fast tanks, deadly fighter planes and guided cruise missiles will impede your rescue attempt. But then, nobody said being a hero was easy.

5200™  
CX52

## FEATURES AND BENEFITS

### COMPUTER GAME OF THE YEAR.

CHOPLIFTER is perhaps the most successful computer game ever published. Consumers have established CHOPLIFTER as the best-selling game of 1983. Critics have voted it the "Computer game of the year" (Electronic Games Magazine.)

**GRIPPING ACTION.** The strength of the CHOPLIFTER story line as well as its realistic game play make you feel that you are part of the action.

### PROGRESSIVELY CHALLENGING GAME PLAY.

CHOPLIFTER features thrills for the novice with enough challenge to maintain the interest of even the best players. Start out by rescuing hostages while fighting off fast-approaching tanks. In successive waves, fighter planes and then cruise missiles multiply the challenge.

**ACTION-PACKED REALISM.** From the moving tank treads to the starry sky to the appreciative salute of the rescued hostages—CHOPLIFTER looks so real, you feel you're there!

AVAILABLE: 2600 April 1983  
5200 March 1983





ATARI®

## DIG DUG®

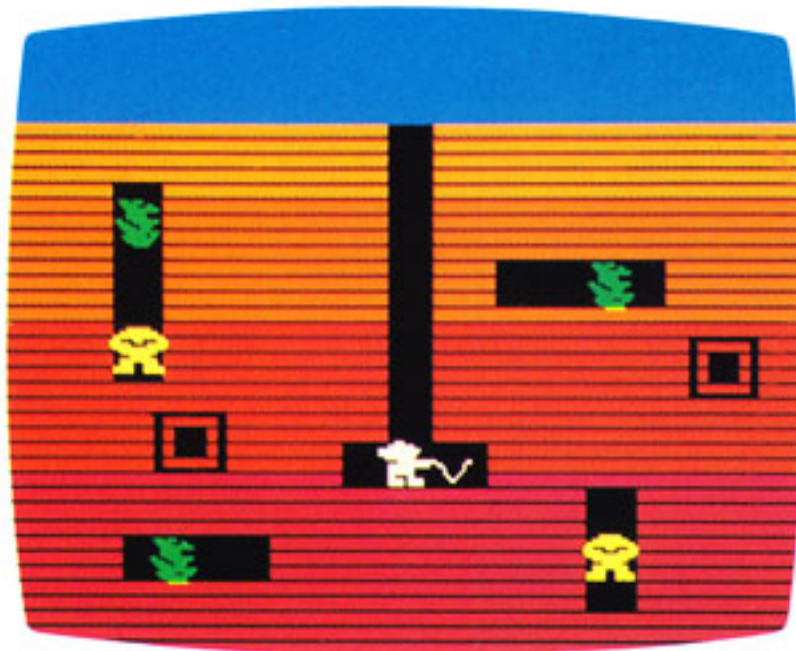
EXPERIENCE THE  
GROUND-BREAKING FUN OF  
THIS ARCADE HIT!

- Earth-Shattering  
Arcade Hit
- All Family Appeal
- Unique "create your  
own maze"  
Game Play
- "Your journey into  
the underworld  
will be a very  
satisfying one"  
—Videogaming



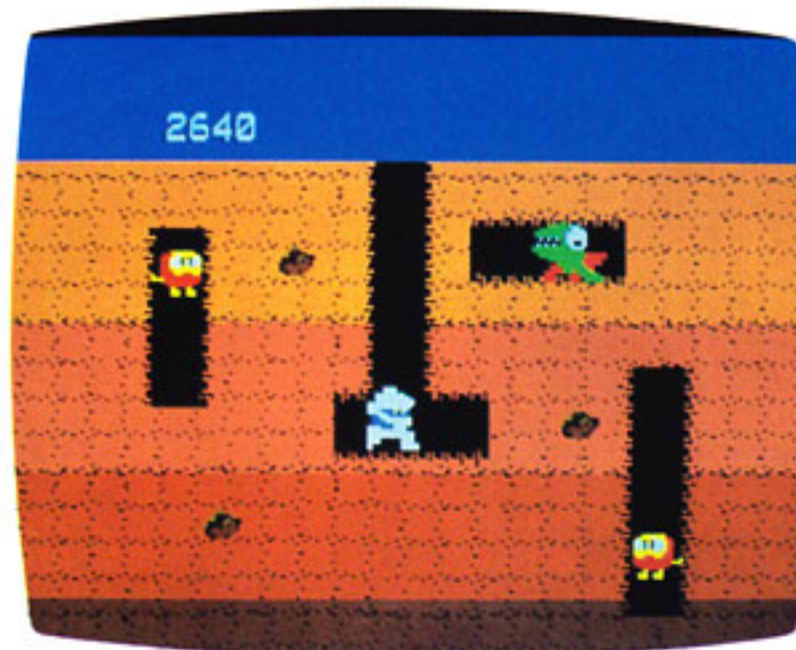


## GAME PLAY



DIG DUG, the miner, feverishly digs tunnels in his hunt for buried veggie treasures, and you decide his course! Each shovelful threatens to unearth a meanie. DIG DUG must outsmart them by strategically tunnelling underneath a boulder, causing it to fall and crush them. DIG DUG can also use his underground compressor to pump up the bad guys until they explode. Round is completed when all meanies are destroyed or escape.

2600™ DIG DUG  
CX2677



5200™ AND HOME COMPUTER DIG DUG  
CX5211 RX8026

## FEATURES AND BENEFITS

**ARCADE FAVORITE.** Atari's original version of DIG DUG has ranked among the top five highest-grossing arcade games since its introduction. DIG DUG has a pre-sold market of avid players just waiting for this almost identical 5200 SuperSystem cartridge.

### UNIQUE "CREATE YOUR OWN MAZE"

**GAME PLAY.** Players actually create their own mazes in this exciting game. Two skill levels, two-player option, and eight separate advancing screens combine to offer players a real challenge. The Joystick controller's fire button stuns and pumps up meanies.

**UNIVERSAL APPEAL.** Humorous characters and challenging game play make DIG DUG great fun for players of all ages and skill levels.

AVAILABLE: 2600 NOW  
5200 NOW  
Computer NOW





ATARI®

# JOUST\*

WAGE BATTLE AGAINST  
ENEMY KNIGHTS  
IN A FANTASTIC  
MEDIEVAL KINGDOM!

- Arcade Favorite
- Challenging Game Play
- Unique Team Play Option
- "Joust stands as one of the best coin-op to cart translations in recent memory"  
—Electronic Fun Magazine



\*JOUST is a trademark and © Williams 1982, manufactured under license from Williams Electronics, Inc.



## GAME PLAY



9/10 Typewriter Medium

Lance-wielding medieval knights ride their flying ostriches to battle enemy knights. Beware! Enemy birds lay eggs that hatch full-grown warriors unless smashed! Advancing screens present greater challenges with varying configurations, more enemy riders and a pool of molten lava covering the bottom of the screen.

2600™ JOUST  
CX2691

5200™ AND HOME COMPUTER JOUST  
CX5239 RX8044

## FEATURES AND BENEFITS

**ARCADE FAVORITE.** Since its introduction, JOUST has consistently topped the list of highest-grossing arcade games.\* JOUST has a pre-sold market of avid players waiting to buy this exciting home version.

**CHALLENGING GAME PLAY** JOUST requires excellent hand-eye coordination, as flying motion is achieved by rapidly pressing the fire button.

**UNIQUE TEAM PLAY OPTION.** Two players may compete cooperatively against computer or battle each other for hours of engrossing play.

AVAILABLE: 2600 NOW  
5200 NOW  
Computer NOW

\*Source: PLAYMETER and REPLY





ATARI®

# MARIO BROS.\* By Nintendo\*

HELP MARIO AND  
HIS BROTHER LUIGI BATTLE  
PIPE-DWELLING PESTS!

- ☐ Knockout Arcade Hit
- ☐ Unique Team Play Option
- ☐ Universal Appeal
- ☐ Outstanding Arcade-Like Graphics



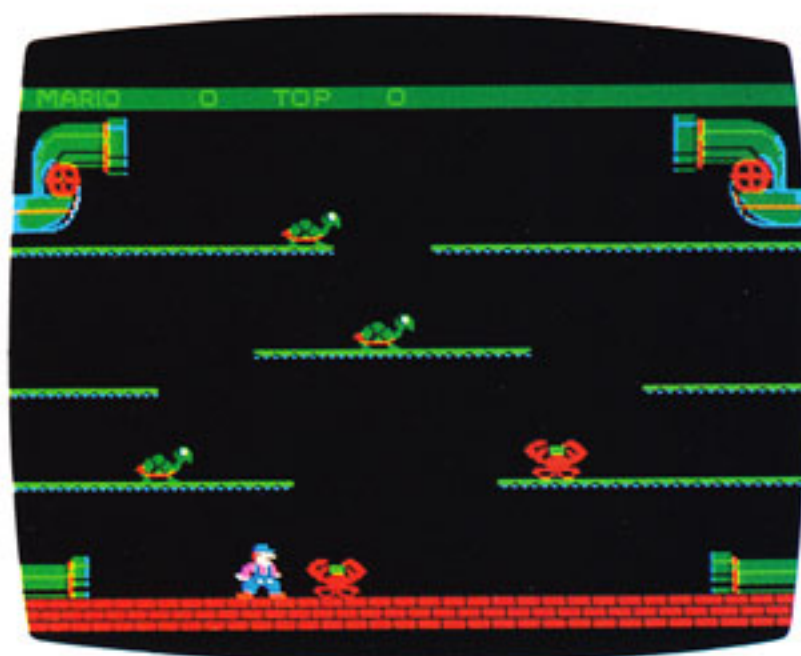


## GAME PLAY



Why are Mario and his brother Luigi hopping mad? Their water pipes are blocked with creepy crawling creatures. That's why! It'll be a dirty shame if the brothers can't clear those pipes because they'll never bathe again! Your task is to help Mario and Luigi destroy the pipe pests!

**2600™**  
CX2647

5200™ AND COMPUTER  
CX5247 RX8051

## FEATURES AND BENEFITS

**KNOCKOUT ARCADE HIT. MARIO BROS.** By Nintendo is the third generation of the incredibly popular DONKEY KONG arcade series.

**UNIQUE TEAM PLAY OPTION.** Allows two players to battle each other or to team up and play against the computer.

**UNIVERSAL APPEAL.** Winning graphics, delightful game sounds and a variety of skill levels, provides broad family appeal.

**OUTSTANDING ARCADE-LIKE GRAPHICS.**

Market tests confirm that MARIO BROS. By Nintendo has superior, high-resolution graphics. That, "The graphics are incredibly realistic" was a frequently heard comment.

AVAILABLE: 2600 NOW  
5200 NOW  
Computer April 1984





ATARI®

# MILLIPEDE™

THE BUGS ARE BACK!  
AND THE BATTLE  
CONTINUES!

- Second Generation  
Arcade Favorite
- Challenging Game Play
- Universal Appeal





## GAME PLAY



Look out! An army of menacing millipedes—cousins to the famed CENTIPEDE—have invaded your garden! Shoot fast before they bite you! Oh no! The millipedes aren't the only insidious insects you must destroy. Jumping spiders, buzzing bees, bouncing beetles, mosquitoes, dragon flies, inch worms and earwigs have overrun your garden. They all possess unique and deadly powers!

2600™  
CX26118

5200™ AND COMPUTER  
CX5248 RX8048

## FEATURES AND BENEFITS

### SECOND GENERATION ARCADE FAVORITE.

The battle continues. Atari brings back the bugs! CENTIPEDE™ was an arcade classic and MILLIPEDE is even better! The MILLIPEDE generation of creepy crawlers are meaner, faster and deadlier than ever. It's a game that buzzes with continuous, high-energy excitement!

**CHALLENGING GAME PLAY.** Players must combat eight different insects—each with unique powers and special tricks. Poisonous mushrooms abound. Four DDT bombs lay about the playfield. Detonating a bomb causes a poisonous cloud to envelope and smother any nearby bugs, scoring double points. Progressively faster, more difficult waves provide exceptional challenge.

**UNIVERSAL APPEAL.** Men and women of all ages love the colorful graphics, pleasing game sounds and fast-paced, continuous excitement

AVAILABLE: 2600 March 1984  
5200 March 1984  
Computer March 1984



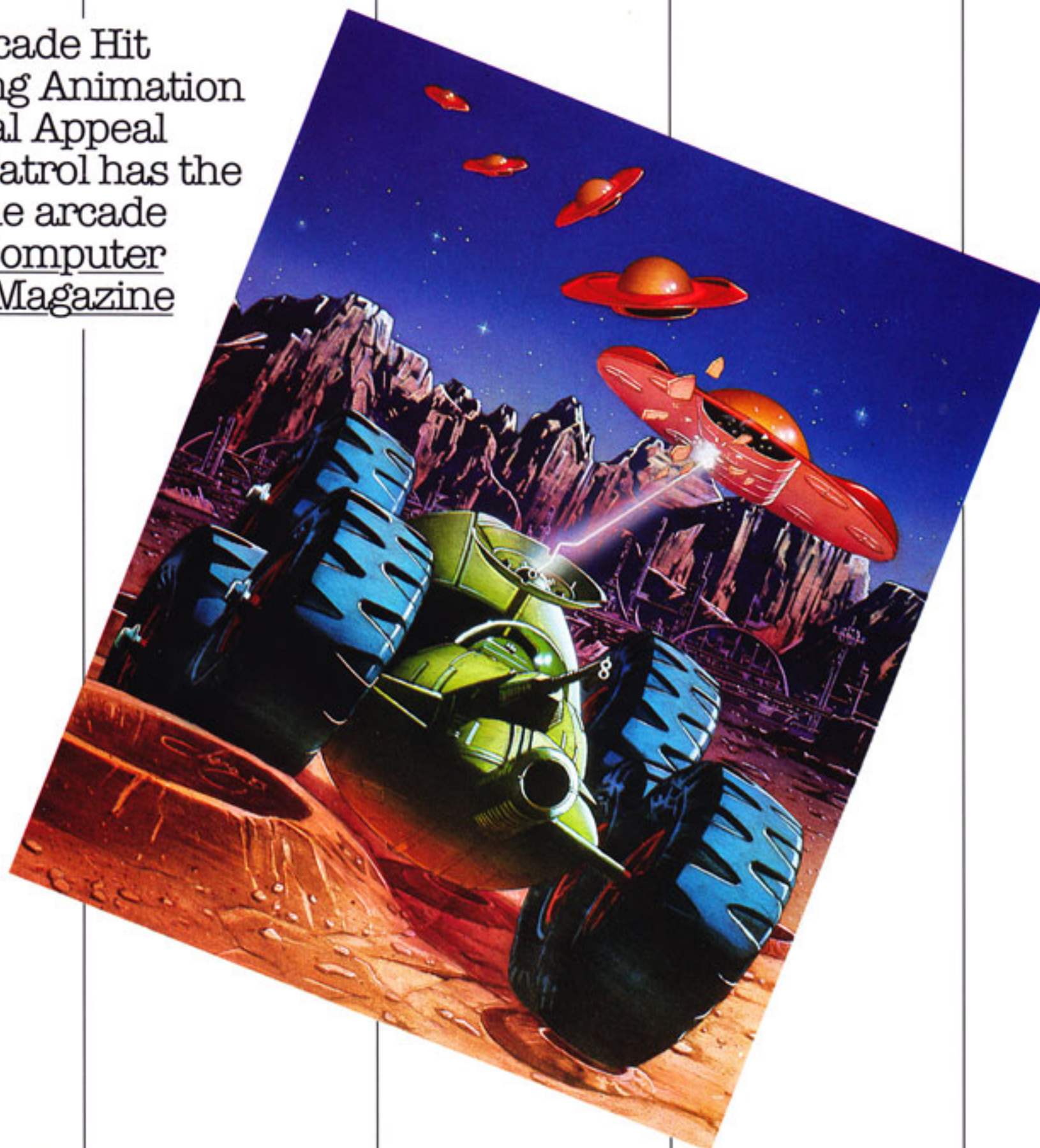


ATARI®

# MOON PATROL®

TAKE A BUMPY RIDE  
IN YOUR "MOON BUGGY"  
ACROSS THE LUNAR  
SURFACE!

- 1983 Arcade Hit
- Appealing Animation
- Universal Appeal
- "Moon Patrol has the  
feel of the arcade  
game"—Computer  
Games Magazine



\*MOON PATROL is a trademark and © of Williams 1982, manufactured under  
license from Williams Electronics, Inc.

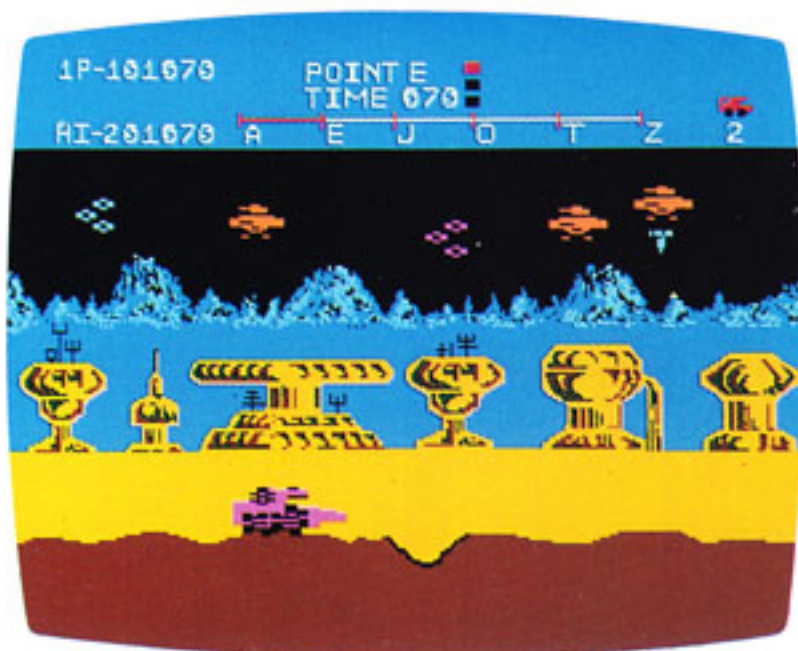


## GAME PLAY



Travel across the surface of the moon in the shortest time possible while defending your moon buggy against enemy attack. Shoot both rocks (in front) and rockets (above), while jumping moon craters along the way. Each level increases in difficulty, with additional enemies at the most advanced levels.

2600™ MOON PATROL  
CX2692



5200™ AND HOME COMPUTER MOON PATROL  
CX5241 TBD

## FEATURES AND BENEFITS

**1983 ARCADE HIT.** MOON PATROL is a recent and popular arcade game. A pre-sold market is waiting to buy this exciting home version.

**APPEALING ANIMATION.** This game features amusing action and comical graphics sequences. A favorite scene is when the "Moon Buggy" is zapped—with all its wheels bouncing high into the air.

**UNIVERSAL APPEAL.** Although the primary market for MOON PATROL is teenage males and females, the comic aspects of the game give it strong appeal to a secondary market of younger children and women.

AVAILABLE: 2600 NOW  
5200 NOW  
Computer February 1984



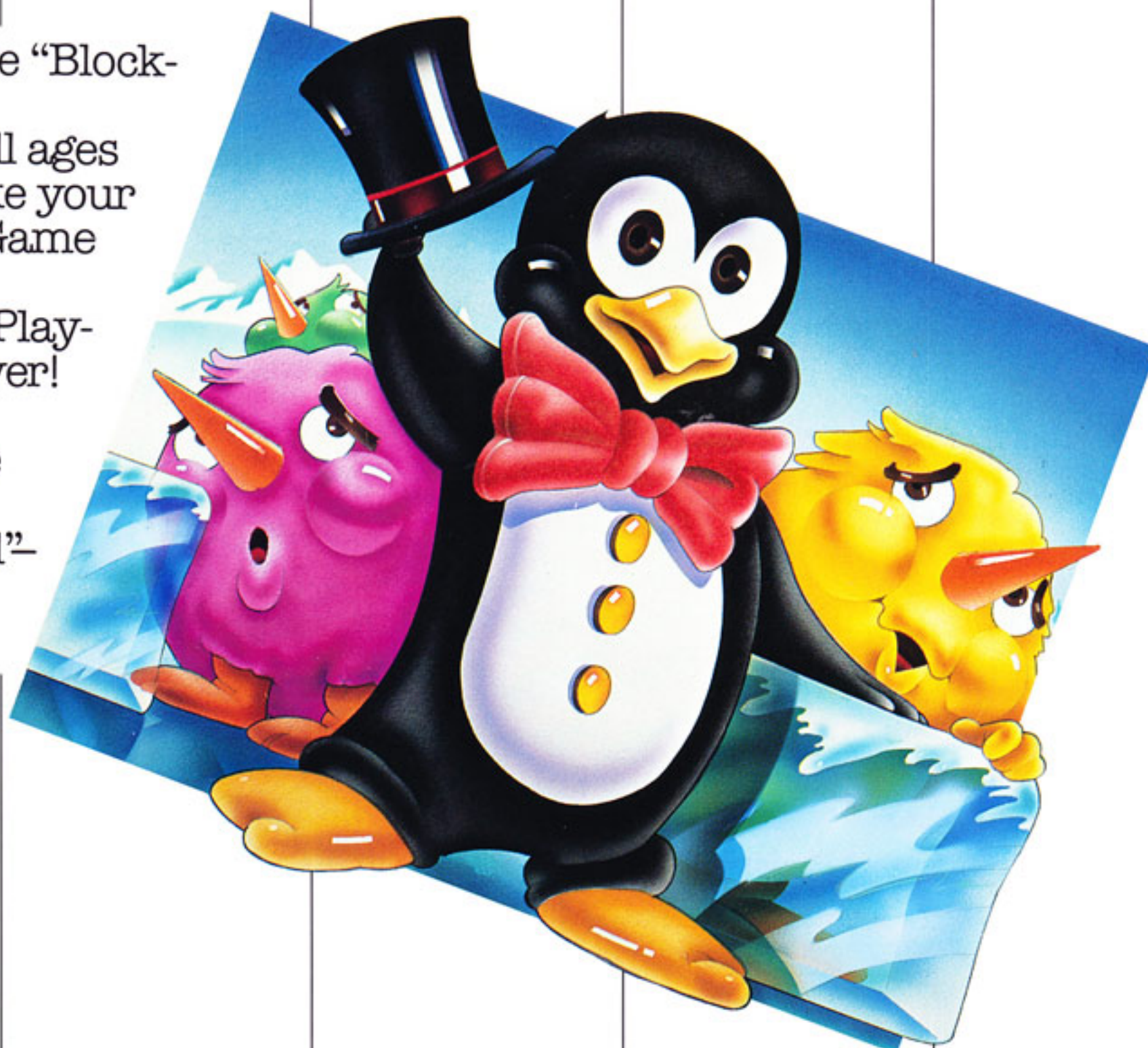


ATARI®

PENGO™\*

USE SKILL AND SPEED  
TO HELP PENGU THE  
PENGUIN FIGHT OFF  
ATTACKERS!

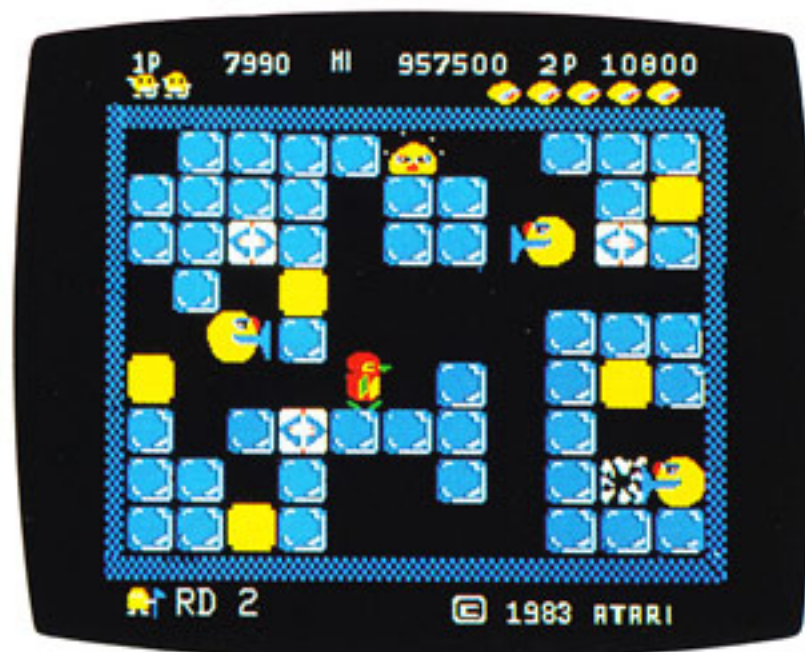
- Arctic Arcade "Block-buster"
- Appeals to all ages
- Unique "make your own maze" Game Play
- 3rd Highest Play-test Score Ever!
- "Fans of the arcade game will not be disappointed"—Computer Games



\*Indicates a trademark of SEGA ENTERPRISES, INC. and used by ATARI, Inc. under license.



## GAME PLAY



Help Pengo, the Penguin, fight killer Sno-Bees on a battlefield of ice blocks. Just like the arcade game, Pengo must crush or freeze the deadly creatures before they destroy him. The faster he clears them out, the more points you win!

2600™ PENG0  
CX2690

5200™ AND HOME COMPUTER PENG0  
CX5236 RX8045

## FEATURES AND BENEFITS

**ARCTIC ARCADE "BLOCKBUSTER."** One of America's favorite arcade games, Pengo has a pre-sold market waiting to buy this exciting home version.

**UNIQUE CREATE YOUR OWN MAZE GAME PLAY.** Pengo features exciting new maze concepts and adjustable skill levels for long-lasting player interest.

**APPEALS TO ALL AGES.** Lovable penguin character and varying skill levels make Pengo fun for the entire family.

AVAILABLE: 2600 March 1984  
5200 NOW  
Computer February 1984





ATARI®

# PIGS IN SPACE™\*

THE LOVABLE  
MUPPETS™\* STAR IN  
A NEW ATARI CARTRIDGE!

- Favorite, World Famous Characters
- Humorous Game Play
- Engaging Graphics
- Family Fun For All
- Three Games in One



\*PIGS IN SPACE, MUPPETS and character names are trademarks of Henson Associates, Inc. MUPPET characters © Henson Associates, Inc. 1983.



## GAME PLAY



A parody of space games featuring Jim Henson's Muppets in a series of far out space adventures. In one sequence Pastaroids, Miss Piggy tries to reach the Swinetrek spaceship, karate chopping the meatballs in her way. In another, Captain Link Hogthrob must dodge a shower of eggs thrown by a squawking squadron of space chickens. In a third sequence, Dr. Strangepork fires the Boomeray, a secret Swinetrek weapon. Three games in all, to appeal to players of all ages.

**2600™ PIGS IN SPACE**  
CX26114



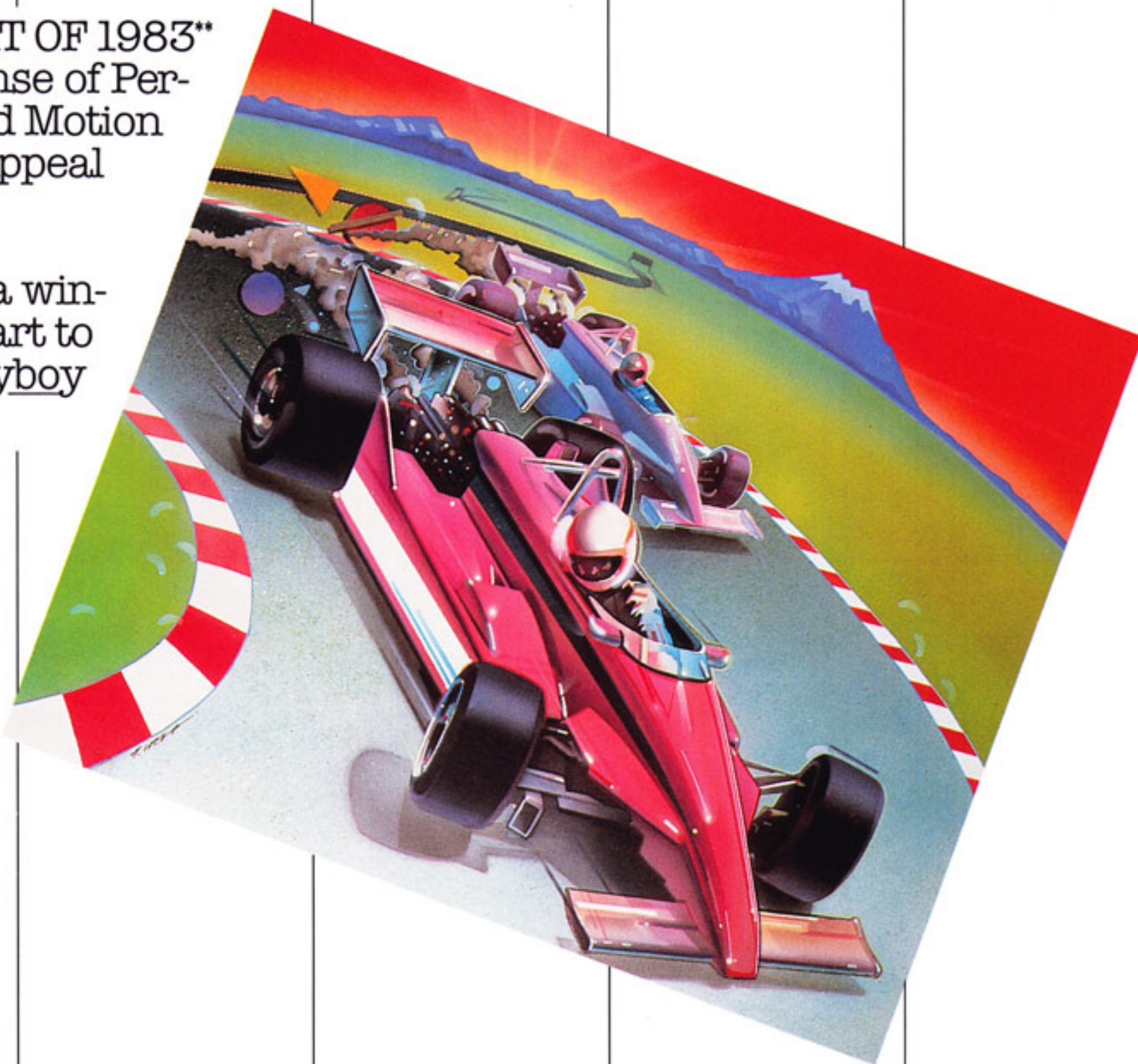


ATARI®

# POLE POSITION\*

REAL BEHIND-THE-  
WHEEL THRILLS AT THE  
SPEEDWAY!

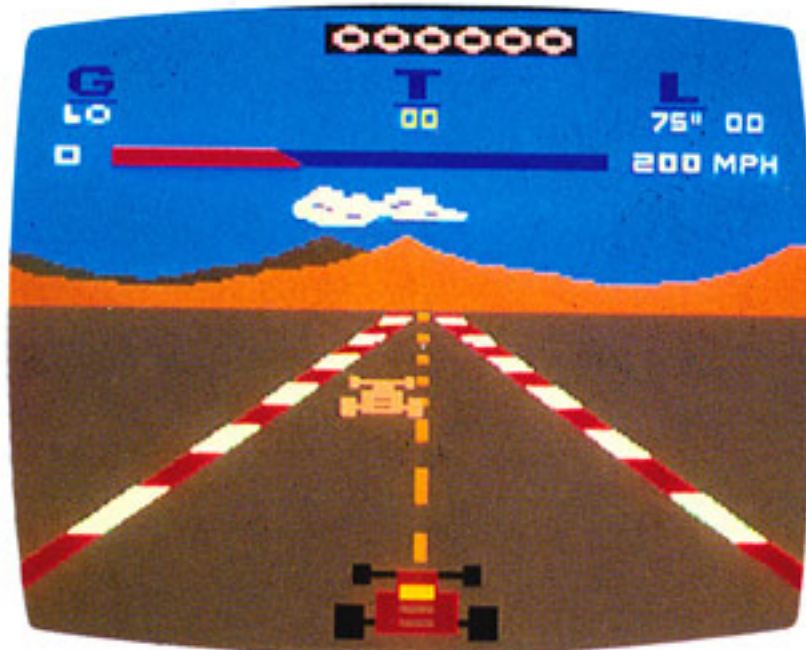
- ARCADE HIT OF 1983\*\*
- Exciting Sense of Perspective and Motion
- Universal Appeal
- Impressive Graphics
- "This one's a winner from start to finish"—Playboy Magazine



\*POLE POSITION is engineered and designed by Namco, Ltd. Manufactured under license by Atari Inc. Trademark and © Namco 1982  
\*\*ELECTRONIC GAMES



# GAME PLAY



POLE POSITION is an accurate replica of a Grand Prix race. Players must first qualify for the final race by driving a qualifying lap. Performance on this initial lap determines the player's position within the eight car field. The driver who passes the most cars and travels the furthest distance in a given time period wins.

2600™ POLE POSITION  
CX2644

5200™ AND HOME COMPUTER POLE POSITION  
CX5217 RX8034

# FEATURES AND BENEFITS

**ARCADE FAVORITE.** POLE POSITION, the top performing/grossing arcade game of 1983 has a pre-sold market waiting to buy this exciting home version.

**EXCITING SENSE OF PERSPECTIVE AND MOTION.** POLE POSITION features a fabulous change of perspective as you wheel around dangerous curves or travel from one side of the road to the other. The involving graphics make this game as much fun to watch as it is to play!

**UNIVERSAL APPEAL.** POLE POSITION offers the best first person game play of any video game. It's easy to understand, easy to relate to and fun to play with someone. It appeals to a broad range of consumers, especially women.

**IMPRESSIVE GRAPHICS.** This cartridge features an incredibly colorful and realistic background including roadside signs, scenery, highlighted with an extraordinary graphic sequence upon crashing.

AVAILABLE: 2600 NOW  
5200 NOW  
Computer NOW





ATARI®

# SNOOPY™ AND THE RED BARON

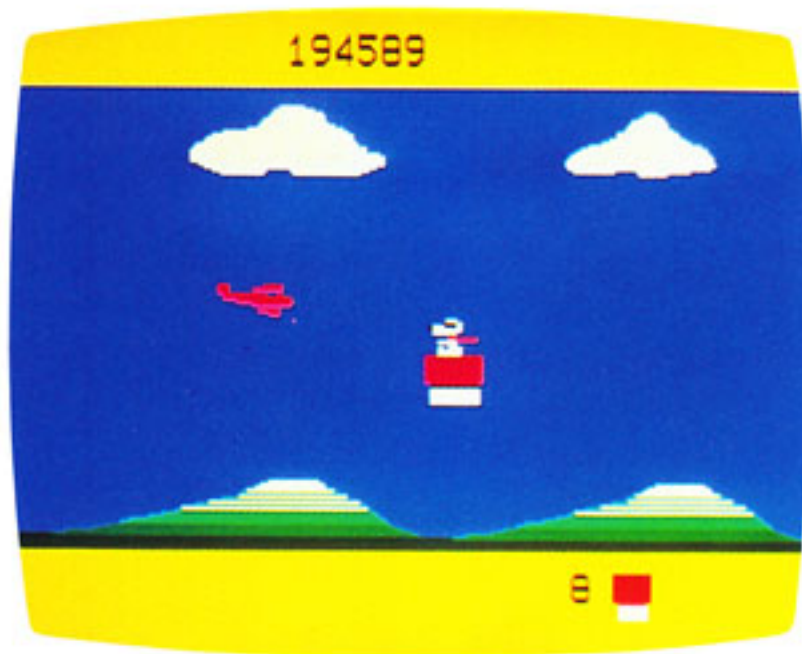
GOOD GRIEF! IT'S...  
AN ATARI PEANUTS  
CARTRIDGE!

- Pre-Sold Favorite Kids' Characters
- Lively, Colorful Animation
- Hilarious Skill and Action Thriller





## GAME PLAY



SNOOPY, just about everyone's favorite PEANUTS® character, is the star of an exciting video dogfight. In this exciting and hilarious skill and action game SNOOPY flies his doghouse battling the Red Baron's Fokker Tri-plane against a horizontally scrolling screen.

2600™ SNOOPY AND THE RED BARON  
CX26111





ATARI®

# SORCERER'S APPRENTICE\*

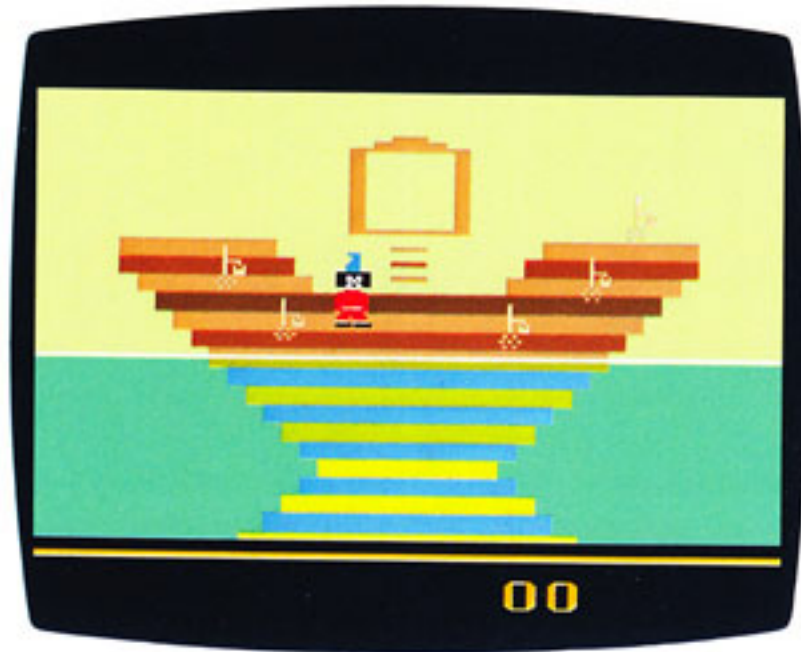
ATARI JOINS FORCES WITH  
WALT DISNEY PRODUCTIONS  
FOR A GREAT NEW GAME!

- All Time Favorite  
Licensed Character!
- Engaging Animation  
and Sound Effects!
- For Children of all  
Ages





# GAME PLAY



Leap inside Walt Disney's timeless world of Fantasia! Help Mickey zap falling stars and streaking comets, then bail out the Sorcerer's cavern before the magical brooms flood everything.

2600™ SORCERER'S APPRENTICE  
CX26109





ATARI®

**TAZ\***

TAKE THE WHIRLING  
TASMANIAN DEVIL\*  
CHARACTER ON A JUNK FOOD  
FEEDING FRENZY!

- ☐ ATARI Original
- ☐ Appetizing Animation
- ☐ Mouth-Watering  
Appeal
- ☐ A Bellyfull of Fun





## GAME PLAY



Take the ravenous Tasmanian Devil on an eating binge. He'll devour everything in sight, so watch out for dynamite—one serving and he gets a devil of a bellyache! After Taz finishes courses of hamburger, root beer, ice cream and popsicles, he starts the Crazy Wave, where the food and dynamite come twice as fast!

2600™  
CX2699

## FEATURES AND BENEFITS

**ATARI ORIGINAL.** Designed and created by Atari for the Atari 2600 VCS™, TAZ is an exciting original game that isn't available anywhere else.

**APPETIZING ANIMATION.** Mouth-watering graphics and whirlwind Taz actions make this a game you'll want to play again and again!

**MOUTH-WATERING APPEAL.** A classic easy-to-learn but hard-to-master winner! Rated as one of the best ever by a teenage target market. Male/Female preteens and adults also loved TAZ.

**A BELLYFULL OF FUN.** Test your reaction time and joystick control. Try your luck at eating the nine different snacks without swallowing any dynamite. If you can work your way up to the highest difficulty level, you'll get a special food treat!

AVAILABLE: 2600 February 1984



ATARI  
SMASH  
HITS

ATARI®

# THE ATARI® SESAME STREET™ LIBRARY

THESE SPECIAL NEW VIDEO  
GAMES, DESIGNED JUST FOR  
YOUNG CHILDREN COMBINE  
FUN WITH EDUCATION.

- Sensational graphics and game play
- For children ages three to seven
- Pre-tested
- Special controller





# GAMES THAT COMBINE FUN WITH EDUCATION

ATARI has joined forces with the Children's Television Workshop to produce video-games that combine fun with education. These cartridges are designed for kids ages three to seven. The game play and graphics are truly sensational! Each game has been tested with over one hundred kids in the three to seven age range to ensure that it is age-appropriate.



## THE KID'S CONTROLLER

Cartridges in the ATARI SESAME STREET LIBRARY require a special controller. The KID'S CONTROLLER was designed by ATARI and child experts in conjunction with child researchers at CHILDREN'S COMPUTER WORKSHOP to ensure that little hands really can play these games.

CX23  
AVAILABLE NOW



## OSCAR'S TRASH RACE™

Try to match the numbers on the grouch's can with the number of items the trash truck leaves behind. Walk the right can down the screen to collect your trash. But, watch out for puddles! Super sounds add to the fun!

This amusing game helps children practice counting skills, as well as directionality and coordination.

CX26101

AVAILABLE:  
February 1984



## BIG BIRD'S EGG CATCH™

Plump hens lay eggs into colorful chutes while children help Big Bird dash back and forth to catch the falling eggs. Sound effects, such as the hens clucking away at the top of the screen, add a special dimension to this game.

BIG BIRD'S EGG CATCH provides children with a fun way to work with directional arrows and the concepts of left and right in an exciting, problem-solving game.

CX26104

AVAILABLE NOW



## ALPHA BEAM™ WITH ERNIE™

Young astronauts pilot small shuttle crafts alone or in a joint effort to refuel a giant spaceship with alphabet letters. Kids love the sound effects and the "magical beam" that transports lettered fuel canisters to letters on the spaceship.

This game helps children practice important skills such as letter matching with both upper and lower case letters. ALPHA BEAM with Ernie also provides a unique opportunity for two children to play cooperatively.

CX26103

AVAILABLE NOW



## COOKIE MONSTER MUNCH™

In this exciting game children help Cookie Monster or the Cookie Kid move through mazes to collect cookies as fast as they can. Cookie Monster looks hilarious when shuffling around the maze, and especially exciting in full screen payoffs.

Children can practice important pre-reading skills, such as tracing a maze patterns, while using directional arrows and the concepts of up, down, right and left.

CX26102

AVAILABLE NOW





1. Indicates a trademark of Children's Television Network.
- 2, 3. © 1983 ATARI/CCW. All Rights Reserved. Featuring the  
Jim Henson™ # Sesame Street™ Muppets™ # Characters.
1. Indicates TM of CTW.
2. Indicates TM of CCW.
3. Indicates TM of Muppets.
- # Indicates TM of Henson Associates.