

FONTZ! Lets You Decide



Are you tired of using the same fonts all the time? Want to add a little life to your documents? FONTZ!™ lets you do something about it. FONTZ!™ is a full-featured GEM Font Editor for the Atari ST.

Among the many features of FONTZ!™ is the ability to load fonts from Macintosh*, Amiga*, DEGAS, and HippoWord formats and automatically convert them to GEM format. There are literally thousands of different fonts available in these formats, and now you

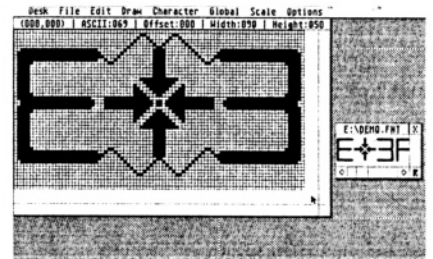
can use them with popular Atari ST programs like Neocept's WordUp™, Timeworks Publisher ST, Migraph's Easy-Draw, Batteries Included's DEGAS Elite, or any program which uses GEM fonts. Give yourself the ability to make your documents stand out!

FONTZ!™ also has the ability to create fonts of different sizes for different screens and printers. You can automatically create printer fonts from screen fonts in one easy step. FONTZ!™ will create fonts for any standard GEM device, in sizes up to 300 lines tall. You can also create different sizes for the same device. Need a 24 point size to go along with your 12 and 18 point sizes? No problem! FONTZ!™ lets you create a new size in one easy step.



One popular application for FONTZ!™ is customizing a font to meet your needs. Suppose a font has twice as many characters as you really need. They still take up memory you could be using for more fonts or for your document. With FONTZ!™, you can remove those unwanted characters and regain that lost memory. If you need a special math symbol for that important school paper, FONTZ!™ will let you create it. Instead of just settling for what you get, FONTZ!™ lets YOU decide.

Another popular use is creating a specialized logo which can be retrieved at any time with a single keystroke from any program which uses GEM fonts. FONTZ!™ includes a number of specialized drawing functions to make editing characters easy, including lines, circles, arcs, boxes, and more. There are also easy-to-use cut and paste functions to help avoid doing the same thing over and over.



TODAY'S SPECIALS....

Black Shadow.. Boot BIGTALL

LCD -- 0123456789!@#&

KEY-TOPS BOISE

[ALT] [HELP]

CAMELOT 14,18,36

FONTZ!™ comes with six different typefaces to help you get started. And Camelot™, an old-english style typeface, comes in three different sizes for medium-rez color & hi-rez monochrome screens, as well as Epson FX & compatible printers. FONTZ!™ is the perfect companion for any program which uses GEM fonts! The suggested retail price of FONTZ!™ is \$34.95. See your local dealer or call Neocept at (805) 482-4446 for the name of the Qualified Dealer near you!

FONTZ!™ and WordUp™ are trademarks of NEOCEPT Inc. All other product names are trademarks of their respective manufacturers. Some font examples not shown at actual size.

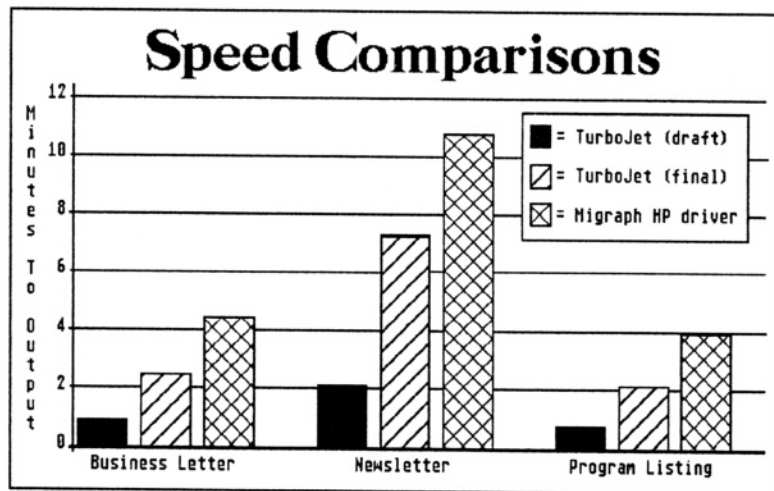
NEOCEPT • 547 Constitution, Unit A • Camarillo, CA 93010 • (805) 482-4446

* FONTZ! does not have the ability to read Macintosh or Amiga diskettes on your Atari ST. In order to be used with FONTZ!, font files from these computers must be on an Atari ST TOS-formatted disk. Use a file-transfer utility or terminal program to download the desired files onto TOS disks. Accepts only Macintosh screen/ImageWriter printer fonts, not LaserWriter fonts. Macintosh font files must be transferred using MacBinary format. The Transverter program for the Magic Sac/Translator One can be used to transfer Macintosh font files from Macintosh or Magic-Sac diskettes.

TurboJet by NEOCEPT

TurboJet is a driver for Hewlett Packard LaserJet and DeskJet printers that will allow you to get fast, crisp printouts from any program that uses GDOS for printer output

- Instructions for use with NEOCEPT's WORDUP, Timeworks Publisher ST, Microsoft Write, and Migraph's Easy-Draw!
- Fastest available (Cuts print time in half on average!)
- Special Draft Mode is 5-7 times faster!
- Serial or Parallel port operation!
- 300dpi & 150dpi versions included!
- Requires only 512K printer memory for most pages!
- Includes screen and 300dpi printer fonts, Swiss, Dutch, & Typewriter, in sizes ranging from 8 to 24 points!
- Not Copy Protected!
- Requires 1 megabyte computer memory & 1 double-sided disk drive



Copyright © 1988 NEOCEPT, Inc. TurboJet & WordUp are trademarks of NEOCEPT Inc.

* The above comparison was measured on a Hewlett Packard LaserJet Series II. Speed savings on the HP DeskJet printer will be comparable. The comparisons were based upon the point at which the printer started receiving data, until page was fed from the printer. This was done to make the comparison independent of the application. Actual print time will include the amount of time your application takes to build a page. The test documents are available for downloading on the GENIE and COMPUSERVE telecommunications networks.

This is an example of the TurboJet manual cover.

In case you didn't realize this, we would like to point out that a system with an Atari 1040ST, Hewlett Packard DeskJet printer, and the TurboJet package gives you the equivalent amount of memory for GDOS applications as a system with an Atari Mega ST2 and Atari SLM804 Laser Printer!

Yet compare the cost! The 1040ST/Deskjet system would cost about \$1600.00, but the Mega ST2/SLM804 system is almost twice as expensive at about \$2900.00!