

DC Shower

A clean way to more than view files



Version 1.0



*Double
Click
Software*

DC Shower

A clean way to more than view files

Owners Manual

Version 1.0

Programs by

Keith Gerdes
Paul Lee
and
Michael B. Vederman

Manual by
Michael B. Vederman

Copyright (c) 1991 Double Click Software
All Rights Reserved

No part of the manual or programs may be reproduced by any means without prior written permission from Double Click Software. The programs are sold on the condition that they are not rented, lent or resold subject to a repurchase agreement.

The programs are supplied in the belief that they operate as specified, neither Double Click Software (the company) nor the authors shall be liable in any circumstances whatsoever for any direct or indirect loss or damage to property incurred or suffered by the customer or any other person as a result of any fault or defect in the goods or services supplied by the company and in no circumstances shall the company be liable to consequential damage or loss of profits (whether or not the possibility thereof was separately advised to it or reasonably foreseeable) arising from the use or performance of such goods or services.

TOS and Atari ST are trademarks of Atari Corporation
GEM is a trademark of Digital Research Inc
All other products mentioned are copyright by their respective owners.

This manual refers to version 1.0 of DC SHOWER. Any amendments to subsequent versions which require documentation will have it contained in the file READ_ME.1ST on the disk.

Preface

Thank you for purchasing the DC SHOWER package.



DC SHOWER is a replacement for the GEM **SHOW** command. With DC SHOWER, you can view text files, programs, pictures, ARC, LHARC, ZIP and ZOO files, and other file types either at the desktop or within programs.

In this package, you will find the programs:

DCSHOWER.PRG
DCSHOTXT.PRG
DCSHOPIC.PRG
DCSHOARC.PRG
DCSHOLZH.PRG
DCSHOZIP.PRG
DCSHOZOO.PRG
DCSHOHEX.PRG
DCPICK.ACC
DCSHOCFG.PRG

All the SHOW modules communicate with the master program DCSHOWER.PRG

And, you might find some other programs which have been added since the printing of this manual.



As changes occur, and other modules are released, we will be making them available, either on our support BBS (713-944-0108) or through upgrades.

You may contact us several other ways:

By phone at our office: (713)977-6520


Online on the following services:

GEnie: username **DOUBLE-CLICK**

CompuServe: userid **75300,577**

Usenet: username@address **uacc0@menudo.uh.edu**

BE SURE TO REGISTER!

Be sure to send in your registration card to get full support of your DC SHOWER, plus receive information about future products. 

We make registering very easy for you. Simply fill out the enclosed card and drop it in the mail. You don't even have to pay for postage, we do! What could be easier!

Any changes which occur can be read about in the file *READ_ME.1ST*

AN IMPORTANT MESSAGE FROM US TO YOU

Your support of our previous products and shareware has given us the incentive to continue providing you with state-of-the-art programs!

Please continue your support and please don't pirate our software!

This is our only means of making money. We work long hard hours and spend many nights working late because we enjoy what we do, but unfortunately, hard work alone cannot pay the bills. Being a small company, we are taking our own future into our hands, and have taken several financial risks by not working for a larger company which provides a 'steady' paycheck.

We don't work on a large profit margin. In fact, you might be surprised that we are even able to do what we do, given our capital. The fact is, we put a lot of ourselves into Double Click Software, with the hopes that it will result in a company that you and we can be proud of.

By purchasing our software and discouraging piracy, you are our boss and 'sign' our paychecks. You decide our future and fate. You have a tremendous power in your hands.

PLEASE, think twice before you decide to give our software away to someone, or even upload our software to a BBS (so strangers can get it - people you don't know - or even know if you'd like!). Besides being a federal offense, you may very well be putting us in the unemployment line! (NO JOKE!)

PLEASE DO NOT GIVE OUR SOFTWARE AWAY!



Thank you,
Mike, Paul, Gilbert and Keith

Believe it or not - READ THIS



Believe it or not, the very first day we released our programs, they are on pirate BBSes all over the United States and abroad. This hurts us alot.



In every case, we have been able to track down the person responsible for the upload and have made them pay for their actions.



If you do decide to pirate our software, understand you have a better than average chance of getting caught. The Atari developer community in the US now has access to a large base of pirate BBSes and is taking actions to catch the people who run them and use them.

It's not that difficult to catch someone, and you are in just as much risk by logging onto a pirate BBS as the person running the BBS.

Getting Started

This manual is divided into sections explaining each of our programs on the DC SHOWER disk.

Icons at a Glance

On the outside margin of each page you will see icons representing the actions which are being described in that section. Icons depicting a mouse indicates actions using the mouse; the keyboard indicates keyboard input or shortcuts, for example.

Pay particular attention to some icons, because they point out an important note or a hint. These icons are:



A note



An important note



A very important note

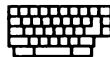


A hint

Manual Notation

Here are a few explanatory notes about this manual:

Keynames The names of keys are spelled out in this manual (for example, <CONTROL>, <ESCAPE>, <LEFT SHIFT>) and appear in capital letters enclosed in angle brackets. The key caps on your keyboard may abbreviate or represent the keys differently.



Key Combinations A plus sign (+) used between two keynames indicates that those keys must be pressed at the same time. For example, "Press <ALT>+<SPACE>" means that you press the <ALTERNATE> key and hold it down while you press the <SPACE> bar and release it. Then release the <ALT> key.

What You Type In this manual, anything that you should type verbatim is printed in *italic*. For example, in a procedure, if you're asked to type a filename or directory name called EXAMPLE, what you actually type is shown in *italic*: *EXAMPLE*. Upper- and lower-case may be important in some cases.



Mouse Terms The following definitions are used to describe mouse operations:

To	Do this
Point	Move the mouse until the tip of the pointer rests on what you want to point at.
Click	Quickly press and release a mouse button.
Drag	Press a mouse button and hold it down while moving the mouse.
Double click	Click the mouse button twice in rapid succession. To click an object means to point to that object on the screen (an icon or menu name, for instance) and click the mouse button.

What's in a Name



Throughout this manual, we will use the words **directory**, **subdirectory**, **folder** and **path**. All these terms ultimately specify a folder somewhere in your system.

C:\DIR1\MYFOLDER

Path is the complete list showing you where a particular folder is, in this example the folder **C:\DIR1\MYFOLDER**.

Directory is another name for **folder** (**MYFOLDER**).

Sub-directory refers to a folder within a folder. In the above example, **MYFOLDER** is a sub-directory of **DIR1**, but it is still a directory/folder.

ROOT Directory refers to the directory you see when you first open up a disk drive window. To copy a file to the **ROOT** directory, simply drag the file to the appropriate disk drive icon.

>To create a new folder at the GEM desktop:

- 1** Select the **FILE** menu and choose the **NEW FOLDER** command.
- 2** Enter the filename.
- 3** Choose **OK** or press **<RETURN>**.

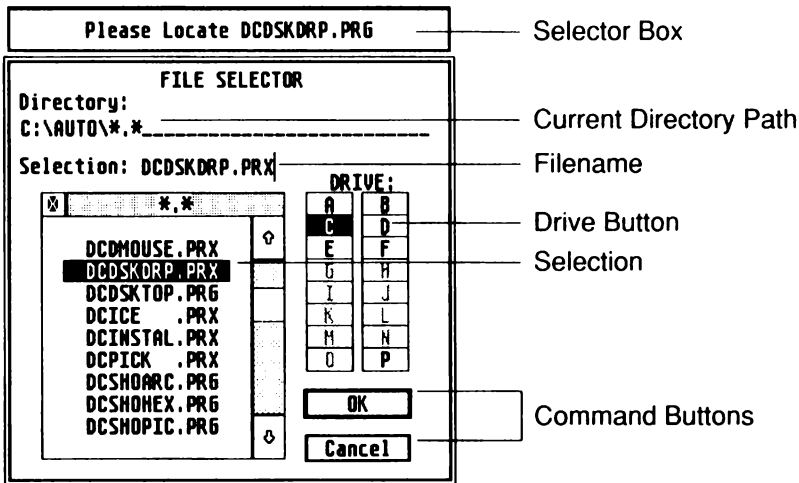
Using the Item Selector

Certain operations will require you to find a file or locate a folder somewhere on your disk system. In these instances, you will be presented with the item selector.



The file selector is built into GEM, but you might have a replacement file selector installed. Some popular replacement selectors are called UISHL.PRG, LGFSEL17.PRG or FSEL60.PRG. They provide enhancements and additional flexibility not allowed from the standard file selector. Please refer to the user's manual for their operation.

The parts in the file selector are similar amongst all the item selectors:



In addition to the file selector, a **selector box** will appear above the file selector (or text will appear in the file selector) to remind you of the file or directory you should locate.

>When you are asked to enter or locate a filename:

- 1 Use the file selector to find it.
- 2 Select the filename to use, or type in a filename.
- 3 Choose the **OK** button, or press <RETURN>.



With the mouse, you can select and open a file listed in the file selector in one step:



Double click the filename of the file you want to use

When you are asked to locate a directory, follow these steps:

- 1** Find the directory.
- 2** Enter the directory by choosing it (name appears on the directory line).
- 3** Choose the **OK** button, or press **<RETURN>**.

Our Programs

Our programs fall into several different categories:

AUTO- runs in the AUTO folder

Desktop- runs from the GEM desktop

Accessory - loads in as a desk accessory

Installable- can run from the AUTO folder or from the desktop

Multiple- can run any of the above ways

AUTO AUTO folder programs must be placed in the **AUTO** folder of your bootup disk so that the program gets loaded into memory before the GEM desktop comes up. Almost all of the DC SHOWER programs can be run this way.



NOTE: DCSHOWER.PRГ is the only program that must run from the AUTO folder; you cannot run it from the desktop.

Desktop Some programs can only run from the GEM desktop. Simply double clicking on the program will execute it and access its features.

Desk Accessory A program with the extension **.ACC** is a desk accessory, and is loaded into the GEM desktop at bootup time. These files usually go on the root directory of your bootup disk (A: or C:). They are loaded in AFTER the AUTO folder programs, but BEFORE the GEM desktop appears.

Installable - Memory Resident Most of the DC SHOWER programs can be run from the AUTO folder. A unique feature of DC SHOWER allows the programs to run from the AUTO folder and become memory resident, then be called from SHOW at the desktop, or from DC PICK in any program.

Multiple Programs that are multiple can be run from the AUTO folder (and thus stay memory resident), can be run from the GEM desktop to access their functions, can be installed from the GEM desktop (and thus stay memory resident), or can even run as a desk accessory.

For the Programmer

For the programmer types, we have even provided a mechanism where you can write programs which hook into the '**SHOW CHAIN**'. Refer to the file **SHOWSTUF.S** on the disk for sample routines and an explanation.

Installation of DC SHOWER

Before you start using DC SHOWER, you should be familiar with your computer and its user's manual. You need to know how to turn the computer on, which disk drive is drive A, and what keys you press to reset, or "boot," your computer.

DC SHOWER can run on any Atari ST computer with a minimum of 512K of memory and one single-sided disk drive. DC SHOWER is 100% compatible with all versions of Atari TOS/GEM.

Step 1: Make a Backup Disk



None of the DC SHOWER programs are copy-protected. Before you get started, we suggest that you make an archival backup of the DC SHOWER master disk. You may do this by copying the files one-by-one onto another disk or by using the desktop disk copy function.

Step 2: Setup Your Work Disk



Almost all of the DC SHOWER modules can run from the AUTO folder. If you do not have an AUTO folder, create one.

- 1 Open a directory window for drive A: (floppy system) or C: (hard disk system).
- 2 Create a new folder named *AUTO* (if necessary).
- 3 Copy the following files to the **AUTO** folder:



DCSHOWER.PRG
DCSHOTXT.PRG
DCSHOPIC.PRG
DCSHOARC.PRG
DCSHOLZH.PRG
DCSHOZIP.PRG
DCSHOZOO.PRG
DCSHOHEX.PRG

NOTE DCSHOWER.PRG must run before the other modules. Order of the other modules within the AUTO folder is not important.

>To make DCSHOWER.PRG run before the others:

Copy *DCSHOWER.PRG* to the AUTO folder, then copy the others.

- 4 Copy DCPICK.ACC to the root directory of your boot disk.
- 5 Copy DCSHOCFG.PRG to any directory (perhaps one that you keep utilities). You should seldom need to run this program.

Other Program Considerations

Other programs can conflict with the DC SHOWER. Some conflict in such a way that the DC SHOWER will not run and those programs must be removed from your system. Other programs must run before or after the DC SHOWER for everything to work correctly.

The following programs **MUST** run **before** DCSHOWER.PRG in the AUTO folder:

GDOS.PRG G+PLUS.PRG POOLFIX3.PRG FATSPEED.PRG



The following programs may cause problems with DC SHOWER. We advise you to remove them completely from your system:

DISKFREE.PRG TURBODOS.PRG COPYFIX.PRG
NEOQUEUE.ACC NEOCNTRL.ACC

TURBO ST 1.8 All versions of TURBO ST 1.8 **MUST** be patched using the patch program we provide on the master disk. Look in the **TURBOST.18** folder for the program *PATCHTST.PRG*.

>To patch a copy of Turbo ST 1.8:

- 1 Locate and run the program *PATCHTST.PRG*
- 2 Follow the prompts.
- 3 When you see the file selector, select any copy of Turbo ST 1.8 you want to patch. You can patch all versions of the software. We advise you do this on backup copies.

NOTE TURBO ST **SHOULD NOT** run from inside MultiDesk with DC SHOWER. Doing so will disable the DC SHOWER. Run TURBO ST as a normal accessory.

A newer version of TURBO ST is available which does not require patching (version 1.84d). Refer to your TURBO ST documentation for more information, or contact SofTrek.



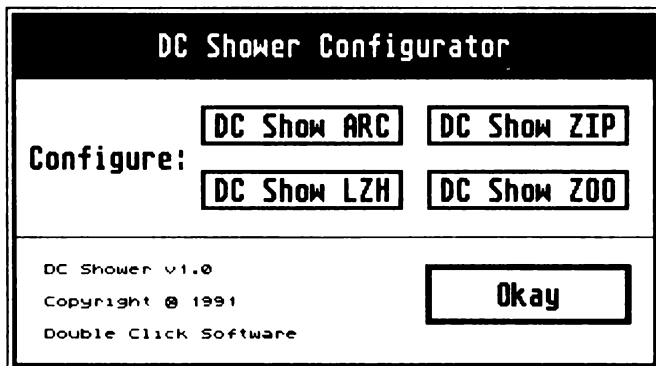
DC SHOWER is specially designed to run best with the QUICK ST II software accelerator (available from Branch Always Software).

DC Shower Configurator

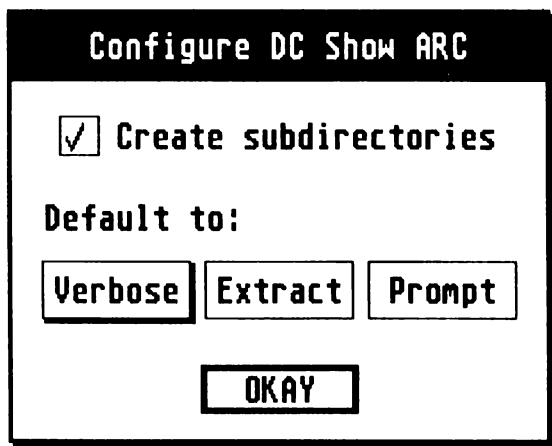
DC Show ARC, LZH, ZIP and ZOO can be configured to perform a default action and to create a directory on an extraction.

>To configure the archive Shower modules:

- 1 Run DCSHOCFG.PRГ. The main menu will appear.



- 2 Click on the module name you wish to configure. Another dialog will appear with the specific configuration options.



- [3] When you show a file using an archive Shower module, you may have it do one of three things automatically upon running. Click on the button which you wish to use as the default option. The default option is shown with a shadowed button.

VERBOSE - verbose contents listing

EXTRACT - extract the contents (may create subdirectory)

PROMPT - give a prompt of options

- [4] Optionally, when extracting an archive, you may wish to store the contents of the archive in a subdirectory named the same as the archive. To enable this option, click on the **CREATE SUBDIRECTORY** button or text until you see a check.

EXAMPLE Extracting from a file named TEST.ARC would create a subdirectory called TEST first, then all the files extracted would go into that subdirectory.



- [5] Exit the specific config menu. If you are configuring for the first time, then a file selector will appear asking you to locate the module indicated. Once located, the configuration info will be saved to the module. If the module is memory resident, it's options will be updated.
- [6] Exit DC Shower Configurator. If you are running it for the first time, you will be asked to locate DC Shower Configurator. Use the file selector to locate it.

NOTE Once a program module is located, you will not get a prompt to locate that module on subsequent running of the DC Shower Configurator, unless you move, delete or rename the program.



DC Show Modules



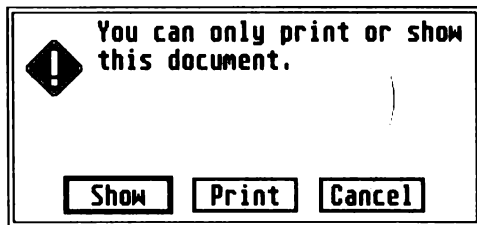
DC Shower has an exclusive technique for allowing modules to intercept the GEM desktop SHOW routine. The SHOW routine is invoked when you double click a non-program file and select SHOW from the dialog box. You are probably familiar with the GEM limited show routine which views plain text files and only allows downward scrolling or quitting.

DC Shower intercepts the SHOW call and attempts to pass the file to one of the DC Show modules. Should no SHOW module be present, then DC Shower will let the GEM desktop's SHOW routine function.

*DC Shower has a protocol (described on disk in the file **SHOWSTUF.S**) which allows a module to be added at any time. Currently, seven modules exist. Other modules could easily be added by anyone to allow (for example) the handling of .SIT files or even a complete text editor!*

>To invoke the SHOW routine for any module:

- 1 Double click a non-program file. You will be presented with a dialog box.



- 2 Click on the **SHOW** button.

A SHOW module can be installed from either the **AUTO** folder or from the GEM desktop or can be run without installing it in memory.

When you SHOW a file the DC Shower modules determine whether or not they can handle the selected file, so you need never worry about selecting which module to use. If the module is loaded, it will handle viewing that file and the other modules will remain inactive.

DC Show Text

DC Show Text views plain text, Word Writer and First Word files. In DC Show Text you can view the text file by using the mouse exclusively, search for a string of characters or print a page of text.



>To invoke DC Show Text to view one file:

- 1 Double click on a text file. If you do not have an installed application for the file extender, a dialog box will appear.
- 2 Click on the **SHOW** button.

>To invoke DC Show Text to view multiple files:

- 1 Run DCSHOTXT.PRG at the GEM desktop. You will see a dialog box. Click on the **RUN** button.
- 2 Choose the file to view.

>To stop viewing multiple files:

Click on the **CANCEL** button in the file selector.

Once invoked, DC Show Text will attempt to load as much of the file into memory as will possibly fit. If DC Show Text is unable to load the complete file into memory, then it will load what it can. When an attempt is made to view the portion of the file that is not loaded, it will read more of the file into memory, ad infinitum. This way, you can view files larger than available memory.

File: DCDSKTOP.DOC Size: 85865 Tab: 4


At the bottom of your screen, you will see statistics about the file, including the name of the file, the file size, and the current tab setting (how many spaces make up a tab).

DC Show Text Help


DC Show Text has several features which are quickly referenced by pressing the **HELP** key inside DC Show Text. These features are:

Up one line	Bottom-of-file
Down one line	Print page
Up one page	Cancel print
Down one page	Search from start of file
Up 1/2 page	Next match
Down 1/2 page	Tab width setting
Top-of-file	Quit show

Keystroke Operations

	To perform	Press
	Up one line	<UP ARROW> or <BACKSPACE>
	Down one line	<DOWN ARROW> or <RETURN>
	Up one page	<SHIFT>+<UP ARROW>
	Down one page	<SHIFT>+<DOWN ARROW>
	Up 1/2 page	<D>
	Down 1/2 page	<U>
	Top-of-file	<T>
	Bottom-of-file	
	Print page	<P>
	Cancel print	<UNDO> or <Q> while printing
	Search (case sensitive)	<S>
	Find (case insensitive)	<F>
	Next match	<N>
	Increase tab width	<RIGHT ARROW>
	Decrease tab width	<LEFT ARROW>
	Quit show	<UNDO>, <Q> or <ESC>

Mouse Operations

	To perform	Press
	Up one line	RIGHT mouse button
	Down one line	LEFT mouse button
	Quit DC Show Text	BOTH mouse buttons

Search

>To perform a case sensitive search:

- 1 Press the <S> key. The screen will clear and you will be prompted to enter a text string up to 20 characters.

Max 20 characters <----->
Enter search string :

- 2 Enter the string to search for.
- 3 Press the <RETURN> key.

>To perform a case insensitive search:

- 1 Press the <F> key. The screen will clear and you will be prompted to enter a text string up to 20 characters.
- 2 Enter the string to search for.
- 3 Press the <RETURN> key.

Searching will begin at the top of the file and will continue to the end. If the file is larger than can be held in memory at one time, then portions of the text will be loaded to allow for the entire document to be searched.

Once a match is found, the occurrence is displayed on the screen and the text is highlighted in inverse text.

DC CONFIGURATOR allows you to setup **DC DESKTOP** before you install it. It includes options to set the DC DESKTOP information directory (where DC DESKTOP files are stored), the TRASH directory (for the recoverable TRASH), certain toggleable options (like whether or not to unload icons before executing a program), the keystrokes to call up certain features (such as the file selector or emptying the TRASH), and the other DC DESKTOP programs.

Double click on the program DCCONFIG.PRG to execute it. The first thing you will see is the MAIN configuration dialog. From here, you can configure the individual DC DESKTOP programs. All of DC DESKTOP comes pre-configured, so it is not necessary for you to set the different options unless you want to change something.

NOTE: You will probably need to verify the DC DESKTOP information directory path and the TRASH path under the DC DESKTOP configuration menu.

The specific configuration of each program and option is explained in the associated sections under CONFIGURING... After you have chosen the configuration you want for each program, click on the SAVE CONFIG button.

The first time you run the DC CONFIGURATOR, an INSTALLATION dialog

File: DCDSKTOP.DOC Size: 85865 Tab: 4

If no match is found, a bell will sound and a message will display on the status line.

Match Not Found - End of File

>To continue the search from the last match position:

Press the <N> key.

Once a match is found, the occurrence is displayed on the screen and the text is highlighted in inverse text.

If no further match is found, a bell will sound and a message will appear on the status line. Pressing <N> again will prompt you for another string. Press the <RETURN> key if you do not wish to enter a search string.

Setting Displayed TAB Width

>To increase the displayed tab width:

Press the **<RIGHT ARROW>** key. The current TAB setting is displayed on the status line.

The number of spaces used for the TAB can be adjusted from 1 on up. All TABs will increase by one space and all lines with TABs will move to the right. If the file does not contain TABs, then the text will not appear different.

>To decrease the displayed tab width:

Press the **<LEFT ARROW>** key. The current TAB setting is displayed on the status line.

The number of spaces used for the TAB can be adjusted down to 1. All TABs will decrease by one space and all lines with TABs will move to the left. If the file does not contain TABs, then the text will not appear different.

Running DC Show

DC Show may also be run as a normal program for repeated viewing of text files.

>To run DC Show Text:

- [1]** Double click on the DCSHOTXT.PRG program. You will be presented with a dialog box.
- [2]** Click on **RUN**. You will be presented with the file selector.
- [3]** Choose a text file to show.

>To install DC Show Text in memory:

- [1]** Run the DCSHOTXT.PRG program. You will be presented with a dialog box.
- [2]** Click on **INSTALL**. DC Show Text will stay memory resident.

Or do this:

Place **DCSHOTXT.PRG** in your AUTO folder. When you bootup, DC Show Text will be installed in memory.

DC Show PICS

DC Show Pics works similarly to DC Show except that it is used exclusively for viewing NEOchrome, Degas, Spectrum, Macintosh, Tiny, Art Director and image pictures.



>To invoke DC Show Pics to view one picture:

- 1 Double click on a picture file. If you do not have an installed application for the file extender, a dialog box will appear.
- 2 Click on the **SHOW** button.

>To exit viewing a picture:

Press either mouse button or any key.

NOTE: Spectrum pictures can only be exited by pressing a key.



>To invoke DC Show Pics to view multiple pictures:

- 1 Run DCSHOPIC.PRGM at the GEM desktop. You will see an install dialog box.
- 2 Click on the **RUN** button. A file selector will appear.
- 3 Choose the picture file to view.

>To stop viewing multiple pictures:

Click on the **CANCEL** button in the file selector.

All picture formats, except Spectrum, are viewable from any resolution. This includes the overscan modification and the Moniterm monitor. Thus, you can view NEO pictures in high resolution or high resolution pictures in low resolution.

When necessary, image (.IMG) files are clipped and scaled to best fit the particular resolution, such as a 1024x768 pixel image file on a 640x400 monochrome SC124 monitor. On a normal size, 640x200 medium resolution color monitor this process may take awhile. A message will appear on-screen during the scaling process.

In low and medium resolutions, high resolution pictures are viewed with a psuedo gray-scale representation. In high resolution, low and medium resolution pictures are viewed with a "true" gray-scale.

NOTE: Some computers may have a problem viewing Spectrum pictures.



Running DC Show Pics

DC Show Pics may also be run as a normal program for repeated viewing of picture files.

>To run DC Show Pics:

- 1** Run the DCSHOPIC.PRG program. You will be presented with a dialog box.
- 2** Click on **RUN**. You will be presented with the file selector.
- 3** Choose a picture file to show.

>To install DC Show Pics in memory:

- 1** Run the DCSHOPIC.PRG program. You will be presented with a dialog box.
- 2** Click on **INSTALL**. DC Show Pics will remain memory resident.

Or do this:

Place **DCSHOPIC.PRG** in your **AUTO** folder. When you bootup, DC Show Pics will be installed in memory.

Supported Picture File Formats

Extender	Format	Resolution	Viewable Rez.
NEO	NEOchrome Degas	Low	Any
PI1	Degas	Low	Any
PI2	Degas	Medium	Any
PI3	Degas	High	Any
PC1	Degas compressed	Low	Any
PC2	Degas compressed	Medium	Any
PC3	Degas compressed	High	Any
TNY	Tiny	Any	Any
TN1	Tiny	Low	Any
TN2	Tiny	Medium	Any
TN3	Tiny	High	Any
SPU	Spectrum uncompressed	Low	Low, Med
SPC	Spectrum compressed	Low	Low, Med
SPS	Spectrum smooshed	Low	Low, Med
ART	Art Director	Low	Any
IMG	Image	High	Any
MAC	MacPaint	High	Any

DC Show ARC, LZH, ZIP and ZOO

DC Show ARC, LZH, ZIP and ZOO are used to manipulate ARC, LZH, ZIP and ZOO files (respectively) and work exactly the same as the other two SHOW modules.



Examples are for DC SHOW ARC, but the others are identical.

>To invoke DC Show ARC to manipulate an ARC file:



1 Double click on an ARC file. If you do not have an installed application for the .ARC file extender, a dialog box will appear.

2 Click on the **SHOW** button.



>To use DC Show ARC for multiple ARC files:

1 Run DCSHOARC.PRG at the GEM desktop. You will see a dialog box.



2 Click on the **RUN** button. A file selector will appear.

3 Choose the ARC file to use.

When entered, DC Show ARC will display the filename being used and the path used for extraction. DC Show ARC can be configured to create a folder on extraction. If you have the create subdirectory option enabled then the extraction path will display the subdirectory that will be created should you choose extract.

>To perform a verbose listing on an ARC file:

Press the <V> key at the prompt.

Using DCSPLPAT.ARC

Extracting to E:\ARC\DCSPLPAT

eXtract, Verbose list, or Quit? [xvq] █

Press [ESC] to abort.

Name	Actual	Stored	Type	Date	Time
=====	=====	=====	=====	=====	=====
PATCHSPL.PRG	1289	819	Crunched	04/22/90	04:18p
=====	=====	=====	=====	=====	=====
Total 1 -	1289	819			

Using DCSPLPAT.ARC

Extracting to E:\ARC\DCSPLPAT

eXtract, Verbose list, or Quit? [xvq] █

>To perform an extraction from an ARC file:

Press the <X> key at the prompt.

```
Creating Directory: E:\ARC\DCSPLPAT\
Extracting : PATCHSPL.PRG          OK
```

Press any key■

DC Show ARC can perform one of three functions immediately upon choosing or SHOWing of an ARC file:

Verbose - DC Show ARC will immediately show the contents of the ARC file, then give you a prompt to choose what to do next.

Extract - DC Show ARC will immediately begin extracting the contents of the ARC file.

Prompt - DC Show ARC will display a prompt asking which function to perform.

>To set the default action:

- ❶ Run the DC Shower Configurator.
- ❷ Click on the **DC SHOW ARC** button.
- ❸ Select the default option.
- ❹ Save the configuration.

As stated above, DC Show ARC can create a folder to store the contents of the ARC file upon extraction. The folder name will be the same as the ARC filename, but without the .ARC extender.

>To automatically create a folder on ARC extraction:



- ❶ Run the DC Shower Configurator at the GEM Desktop.
- ❷ Click on the **DC SHOW ARC** button.
- ❸ Click on **CREATE SUBDIRECTORY** until you see a check.
- ❹ Save the configuration.

See *The DC Shower Configurator* chapter for complete instructions on configuring the DC Shower archive modules.

Running DC Show ARC

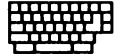
DC Show ARC may also be run as a normal program for repeated manipulation of ARC files.

>To run DC Show ARC:

- 1** Run DCSHOARC.PRG at the GEM desktop. You will be presented with an install dialog box.
- 2** Click on **RUN**. You will be presented with the file selector.
- 3** Choose an ARC file to use.

>To stop selecting ARC files:

Press the <Q> key or click on **CANCEL** in the file selector.



To select another ARC file:

Press the <A> key.

>To install DC Show ARC in memory:

- 1** Double click on the DCSHOARC.PRG program. You will be presented with a dialog box.
- 2** Click on **INSTALL**. DC Show ARC will remain in memory.

Or do this:

Place **DCSHOARC.PRG** in your AUTO folder. When you bootup, DC Show ARC will be installed in memory.

NOTE: DC Show ARC attempts to use all available memory. If DC Show ARC does not have enough memory, or if it is unable to create a subdirectory, you will see an error message on screen and all functions will stop.



DC Show Hex



Show Hex is a 100% assembly program that lets you view and search for data in a file or system memory. For ease of use, input is supported through both the keyboard and the mouse.

OFFSET	Hexadecimal																ASCII
Position in file (\$42 shown)	Hexadecimal representation of each byte																ASCII representation of each byte
	0	1	2	3	4	5	6	7	8	9	A	B	C	D	E	F	0123456789ABCDEF
00000000:	60	1A	00	00	00	A2	00	00	04	02	00	00	03	42	00	00	ó ø Ø
00000010:	00	00	00	00	00	00	00	00	00	00	01	00	00	60	00	00	0C
00000020:	44	43	55	48	00	04	00	3C	00	00	A0	00	23	C8	00	00	DCSH < á ¢ ¤
00000030:	10	04	41	FA	0B	DE	61	00	0B	CE	33	FC	00	01	00	00	¸ º ¯
00000040:	15	58	23	FC	00	00	00	04	00	00	15	86	70	34	61	00	¸ º ¯ ¢ ¤
00000050:	00	38	13	C0	00	00	00	04	67	0C	55	40	60	00	00	98	¸ º ¯ ¢ ¤
00000060:	66	00	00	88	60	16	41	FA	0D	E0	61	00	01	DE	7E	78	f ¢ ¤ ¸ º ¯
00000070:	3F	3C	00	19	4E	4E	54	8F	51	CF	FF	F6	48	78	FF	FF	?< NHTA0J~+Hx~
00000080:	48	79	00	05	00	29	4E	4D	50	8F	20	40	0C	60	00	DC	Hy)MMPA @ ¸ º ¯
00000090:	67	00	10	3A	0D	3C	66	5E	60	50	41	FA	0E	2D	61	00	g : <f^PA. -a
000000A0:	01	AA	48	7A	01	C0	3F	3C	DC	00	4E	49	5C	8F	23	C0	-Hz ¸?<Y NI\A#U
000000B0:	00	00	02	42	22	3C	00	00	00	08	3F	3C	DC	0C	4E	49	B" <?<Y NI
000000C0:	54	8F	41	FA	00	72	20	3A	FF	5E	72	00	32	3A	FF	56	TAA. r :~^r 2:~V
000000D0:	3F	3C	DC	03	4E	49	54	8F	20	2F	00	04	42	67	48	7A	?<Y NITA / BgHz
000000E0:	14	D2	91	97	3F	3C	00	31	4E	41	41	FA	0D	F5	61	00	Qu?< 1NAA. Ja
000000F0:	01	5A	42	67	4E	41	2C	6F	00	04	4F	FA	14	52	43	F0	ZBgNA,o 0. RC°

Input: (U)p (D)own (T)op (B)ottom (O)ffset (Q)uit (A)scii (S)earch

Name: DCSHOHEX.PRG | Size: 4808 bytes | Attributes: advshr
Date: 11-02-90 | Time: 05:19:17 pm | 100000

>To use DC Show Hex from the GEM desktop:

- 1 Execute the program DCSHOHEX.PRG. An alert box will appear asking you to either Run, Install, or Quit.
- 2 Click on RUN. A file selector will appear.
- 3 Choose the file to view. The file will be read and shown.

>To INSTALL DC Show Hex:

- 1 Run DCSHOHEX.PRG. An alert box will appear.
- 2 Click on INSTALL. DC Show Hex will stay in memory.

- or -

Put DCSHOHEX.PRG in your AUTO folder and reboot.

NOTE: While viewing a text file you can toggle to Show Hex with [H]. A binary file is given to Show Hex with no toggling accepted.

DC Show Hex allows you to search for data in a file or in memory.

>To perform a search:

- [1]** Press the <G> or <S> key. You will be prompted for the type of data you want to search for.
- [2]** Press the first letter of the type: **B**yte, **W**ord, **L**ongword or **T**ext
- [3]** Enter the data to search for. For byte, word or longword you must enter the value in hexadecimal format. For text entry, you can enter a maximum of 8 ASCII characters.

If the data is found, the screen will be updated to the location of the found data.

>To repeat the search:

Press the <N> key. If the data is found again, the screen will update to the location of the found data.

Memory viewing mode

You can also view memory using DC Show Hex. To do this, you must enter memory mode.

>To toggle to memory viewing mode:

- 1 Press the <NUMERIC KEYPAD *>. You will be prompted to enter the origin of memory you wish to view. You may press the same key to toggle back to file viewing mode.
- 2 Enter the beginning location in memory you wish to view.

Presets

When in memory mode, you can press a function key to display memory beginning from one of the preset locations

To set origin to	Press
Beginning of memory: \$00000000	<F1>
Base of cartridge: \$FA0000	<F2>
Base of operating system: \$xx0000 where xx = \$FC or \$E0	<F3>
System variables: \$400	<F4>
Cookie jar location: \$*5a0	<F5>
Screen location: \$*44e	<F6>
Line-A variables	<F7>
TT fast RAM: \$1000000	<F8>

Keyboard Equivalents

To	Press
Exit	<Q>, <UNDO>, <ESC>
Go to DC Show if it is a text file	<A>
Display the next 256 bytes	<D>, <SHIFT>+< DOWN ARROW>
Display next 16 bytes	<DOWN ARROW>
Display next byte	<LEFT ARROW>
Display previous 256 bytes	<U>, <SHIFT>+<UP ARROW>
Display previous 16 bytes	<UP ARROW>
Display previous byte	<RIGHT ARROW>
Go to the top of a file	<T>
or the origin of memory	
Go to the bottom of a file	
or the end of memory blovk - 256	
Set file offset or memory origin (in HEX)	<O>
Toggle display between file and memory	<NUMERIC KEYPAD *>
Search	<S> or <G>
Next match	<N>

Mouse Shortcuts

To	Press
EXIT	BOTH mouse buttons
Display next 16 bytes	LEFT mouse button
Display previous 16 bytes	RIGHT mouse button

DC Pick



DC PICK allows you to pick any file for viewing with the SHOW modules that are currently installed in your system.

For example, if you have DC ShowARC installed, you can call up DC PICK, use the file selector to choose an ARC file, and viola! DC ShowARC will be called, and you will be able to view the ARC file contents, or extract them!

The same thing applies for pictures and text files.

When you run DC PICK as a desk accessory, you can view any file from within any program with a menu bar! WOW! So now you have immediate access to all the show modules from one central location at the desktop or in a program!

Installing DC Pick

>To install DC PICK:

Place DCPICK.ACC in the root directory of your bootup disk, or in your normal desk accessory bootup path.

Using DC Pick

DC Pick is an alternate 'coordinator' for the show modules. From the desktop, one might double click a file and choose SHOW, which will invoke the DC Shower modules.

Using DC Pick, however, you can call a file selector to view a file, or you may supply DC Pick with a command line.

You may run DC Pick as a desk accessory or as a normal GEM program (without any parameters) to bring up the file selector. Used like this, you can view multiple files.

>To use DC PICK as a desk accessory:

- [1]** Click on **DC PICK** in the **DESK** menu. A file selector will appear.
- [2]** Use the file selector to choose any file. The appropriate SHOW module will be used to view the file.

>To use DC Pick as a GEM program:

- 1** Rename DCPICK.ACC to *DCPICK.PRG*
- 2** Run DCPICK.PRG. An alert box will appear asking you to either **RUN**, **INSTALL** or **QUIT** DC Pick.
- 3** Click on the **RUN** button. A file selector will appear.
- 4** Use the file selector to choose the file to view. You must have the appropriate DC Shower module installed to handle the file chosen to view.

>To stop using DC PICK:

Click on the CANCEL button in the file selector.

Using DC Pick with parameters

At the GEM desktop you can use DC Pick as a program with installed parameters. When DC Pick is run with a command line parameter of a file name, it will view that file name.

If you supply a command line to DC Pick (such as making it an installed application or the alternate file viewer under NeoDesk 3), it will use the supplied name on the command line as the file to view, and it will invoke the DC Shower modules.

>To use DC Pick as an installed application:

- 1** Click once on DCPICK.PRG at the desktop, so it is selected.
- 2** Choose the **Install Application** command in the **Options** menu.
- 3** Enter the document type (such as *DOC*). Now, whenever you double click on a **.DOC** file, DC Pick will run.
- 4** Click on the **Install** button.

>To run DC Pick and pass it a parameter:

- 1** Rename DCPICK.ACC to *DCPICK.TTP*
- 2** Run DCPICK.TTP. A parameters dialog box will appear.
- 3** Enter the filename to view (use the full path name if the file is not in the same directory as DC Pick).
- 4** Click on the **OK** button. DC Shower will view that file.

Programmers Reference

DC SHOWER is designed with an open architecture. We are hoping that by allowing for other programs to hook into DC SHOWER, other programmers will support the standards we introduce.

Please refer to the file SHOWSTUF.S on the disk for further information on hooking into the DC SHOW chain.

Vectors Used And Monitored

DC SHOWER installs a TRAP #9 handler. It is through this trap handler that all communication with DC SHOWER is performed.

DC SHOWER intercepts the TRAP #1, #2, and #13 vectors.

Specific calls monitored by DC SHOWER in TRAP #1 are:

Fopen
Pexec

Specific calls monitored by DC DESKTOP in TRAP #2 are:

v_pline
v_gtext
vr_recfl
vro_cpyfm
vrt_cpyfm
v_show_c
v_hide_c
vsc_form

Specific calls monitored by DC DESKTOP in TRAP #13 are:

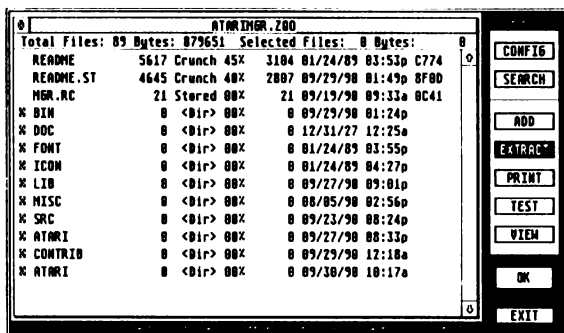
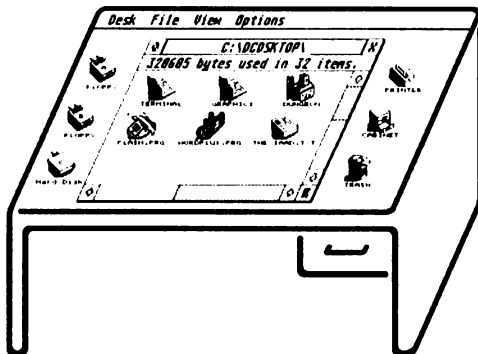
Bconstat
Bconin
Bconout

DC Desktop

The GEM desktop enhancement

"DC Desktop is a permanent part of my system!"

—Ron Luks, Compuserve's SIG Atari
Founder



DC Utilities 2.0

Indispensable tools

"These programs are
aSTounding!"
—Ken Badertscher, Atari

DC ??? (name not finalized as of this printing)

- Compress / decompress files as you use them.
- Completely transparent operation.
- Access files same as always.
- Save *lots* of disk space!



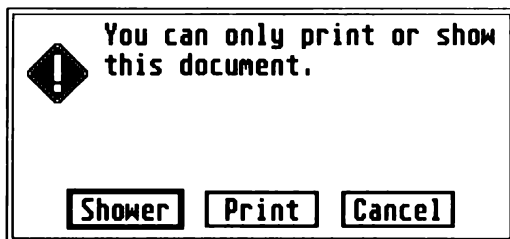
Double
Click
Software

PO BOX 741206
Houston TX 77274-1206

Phone: (713)977-6520
BBS: (713)944-0108

COD, VISA / MC welcome

Replace the desktop SHOW command with a complete system of file viewers and manipulators.



DC Shower can view any text file, binary file, picture file, or (even extract) ARC, LZH, ZIP and ZOO files, at the desktop or in a program.

Everything is 100% assembly for the fastest possible code.

DC SHOW HEX views any file and memory!

OFFSET	0	1	2	3	4	5	6	7	8	9	A	B	C	D	E	F	0123456789ABCDEF
00000000:	60	1A	00	00	00	A2	00	00	04	02	00	00	03	42	00	00	\ 0 0 0
00000010:	00	00	00	00	00	00	00	00	00	01	00	00	60	00	00	0C	
00000020:	44	43	53	48	00	04	00	3C	00	00	A0	00	23	C8	00	00	DCSH < á #1
00000030:	10	04	41	FA	00	DE	61	00	00	CE	33	FC	00	01	00	00	7A. 1a n3^
00000040:	15	58	23	FC	00	00	00	04	00	00	15	86	70	34	61	00	XW^ e ap4a
00000050:	00	38	13	C0	00	00	00	04	67	0C	55	40	60	00	00	98	8 U eg Uek U
00000060:	66	00	00	88	60	16	41	FA	00	E0	61	00	01	DE	7E	78	f e A. αa ^~x
00000070:	3F	3C	00	19	4E	54	0F	51	CF	FF	F6	48	78	FF	FF		?< MNTAQJ~+Hx~
00000080:	48	79	00	05	00	29	4E	4D	50	0F	20	40	0C	60	00	DC	Hy)NMPA e \ y
00000090:	67	00	10	3A	00	3C	66	5E	60	50	41	FA	0E	2D	61	00	g ; <f^PA. -a
000000A0:	01	AA	48	7A	01	C0	3F	3C	DC	00	4E	49	5C	8F	23	C0	-Hz U?<y NI\Amij
000000B0:	00	00	02	42	22	3C	00	00	00	00	3F	3C	DC	0C	4E	49	B" < ?<y NI
000000C0:	54	0F	41	FA	00	72	20	3A	FF	5E	72	00	32	3A	FF	56	TAA. r :~^r 2:~V
000000D0:	3F	3C	DC	03	4E	49	54	0F	20	2F	00	04	42	67	48	7A	?<y NITÄ / BgHz
000000E0:	14	02	91	97	3F	3C	00	31	4E	41	41	FA	0D	F5	61	00	0z07< 1NAA. Ja
000000F0:	01	5A	42	67	4E	41	2C	6F	00	04	4F	FA	14	52	43	F0	ZBgMA,o 0. RC^

Input: (U)p (D)own (T)op (B)ottom (O)ffset (Q)uit (A)scii (S)earch

Name: DCSHOWEX.PRGM | Size: 4800 bytes | Attributes: advshr
Date: 11-02-90 | Time: 05:19:17 pm | 100000



Double
Click
Software

PO BOX 741206
Houston TX 77274-1206

Phone: (713)977-6520
BBS: (713)944-0108

COD, VISA / MC welcome



This manual
is printed on
recycled paper.

Help protect our environment.