

SPIDER-MAN

QUESTPROBE™
by SCOTT ADAMS
with art by
AL MILGROM

IS THIS ONE
OF MYSTERIO'S™
ILLUSIONS--

--OR AM I
SEEING TWO
OF HIM?



Spider-Man™

GAME CLUES

1. Climb ceilings. Check the crib.
2. There are two formulas that you need to make your web fluid.
3. One formula is hidden in a painting frame.
4. Give calcium chloride to LIZARD™, search DOC™, then take him with you.
5. Use your web to get the BIO-GEM™.
6. Lower the thermostat to change HYDROMAN™ to ice.
7. You'll have to shoot your web at the fan until the speed is reduced to 50.
8. To get to the basement, go down five times after entering fan.
9. You'll need to go to the computer room to reset and run the computer.
10. You need eighteen gems to win the game.

ADVENTURE INSTRUCTIONS

Type a two word command when the computer asks "WHAT SHALL I DO?" The first word must be a verb. The second word will indicate a direction or an object. For example, if you are in a dark room and the computer says "IT'S DARK IN HERE. I CAN'T SEE. WHAT SHALL I DO?" If you are carrying a torch, you can light it by typing: "LIGHT TORCH" [RETURN]. (If you make a typing error, use the left arrow key to correct it.)

If the computer can't perform or doesn't understand a command, it will say "I CAN'T DO THAT" or "I DON'T UNDERSTAND". If this happens, reword your command. Make a verb out of the action. For example, instead of "GO SWIMMING", type: "SWIM". Most objects can be picked up using the last word of their names. For example, to pick up a blue ox, type: "GET OX". Usually you can only do things to objects that are either visible or that you are carrying.

The following are some of the verbs you might find useful: CLIMB; EXAMINE; LEAVE; MOVE; QUIT; SAY; DROP; GO; LIGHT; PULL; READ; TAKE; ENTER; HELP; LOOK; PUSH; SAVE; WEAR.

COMMANDS

"C" – On/off lowercase. (Apple only)

"Z" – Graphics mode on/off: Turning the graphics display off speeds up play. You may wish to move through familiar territory without graphics. Type: "Z" again to restore graphics.

[RETURN] – Review text window: Valuable clues are often presented in the text window, so use this command often. Press [RETURN] again or type any command to return graphics to video display.

"N,S,E,W,U,D" – Directional Commands: To speed up play, type: "N", "S", "E", "W", "U", "D" instead of the commands "GO NORTH", "GO UP", etc.

"I" – Inventory: Because you often carry several objects with you, it is easy to forget which ones you dropped and which ones you are still carrying.

"SAVE GAME": Save your game and return to it later at the place you left off. Type: "SAVE GAME" when asked "WHAT SHALL I DO?" You will be prompted to insert a data disk and specify the area (A-D) in which to save the game. You can save a game in Area A and a friend's game in Area C. Up to four adventures in various stages of completion may be saved.

"QUIT": To end a game, type: "QUIT". If you intend to continue the game later, be sure you have saved it before using this command.

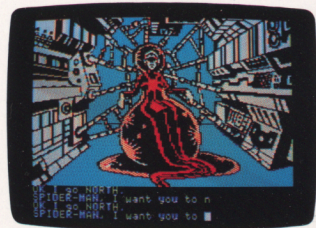
Before any game is started, you are asked if you wish to recall a saved game. If you do, type: "YES", specify the area you saved the game in, and the adventure will resume where you left off.

"HELP": If you get stuck, try: "HELP". You might get assistance depending on what you are carrying, where you are, etc.

ENTERTAINMENT SERIES

QUESTPROBE featuring Spider-Man

The QUESTPROBE Series licensed from Marvel comics, brings your favorite comic characters to life on your computer screen. This comic book on disk allows you to actually become **Spider-Man**.



While on your quest, great interactive graphics allow you to search in different rooms, attack creatures, and journey to different lands in order to solve the different mysteries. In the **Spider-Man** Adventure you must prove to the Chief Examiner that you can utilize the powers of **Spider-Man**. Your objective is twofold: to unlock the riddle of the Chief Examiner and...to survive!

The QUESTPROBE trademark is co-owned by the Marvel Comics Group and Scott Adams, Inc. Copyright 1985 Marvel Comics Group and Scott Adams, Inc.
ARTWORK & TEXT: Copyright 1985 Marvel Comics Group. All Rights Reserved.
GAME DESIGN: Copyright 1985 Scott Adams, Inc. All Rights Reserved. TM 1985

THANK YOU!

And congratulations on your purchase from ShareData, Inc. Please take a few moments to complete the software registration form and mail to the address below.

SOFTWARE REGISTRATION

Name _____ Age _____ Phone(____) _____

If under 16 years, name of parent or guardian _____

Address: _____ City _____ State _____ Zip _____

Which Game did you purchase? _____

Which Brand of computer do you own? _____

Please check the box of those accessories you own:

disk drive printer joy sticks modem color monitor
 writing pad or tablet surge protector dust cover anti-static mat cooling fan

From what store do you purchase most of your hardware? _____ software? _____

Please check the box of those accessories you intend to buy in the next 6 months:

disk drive printer joy sticks modem color monitor
 writing pad or tablet surge protector dust cover anti-static mat cooling fan

BACKUP DISK INFORMATION

If you would like a backup disk of this program, you may order it by completing this original form and send with \$5.00 + 50¢ postage and handling to:

Famous Name Games Backup
ShareData, Inc.
7400 W. Detroit C-170
Chandler, Arizona 85226

BACKUP DISK

(Please print)

Name: _____

Address: _____

City, State, ZIP: _____

Game: _____ Computer: _____

(Please allow four to six weeks for delivery.)

1-800-328-6061

ShareData, Inc.
7400 W. Detroit C-170

Chandler, AZ 85226
