

# MICROLEGER

POWERFUL  
ACCOUNTING  
PACKAGE  
FOR SMALL  
BUSINESS

COMPUTER  
EXPERTISE  
NOT  
REQUIRED

SOURCE  
CODE  
PROVIDED

INTERACTIVE  
WITH  
OTHER  
COMPUMAX  
PROGRAMS

© 1980, All Rights Reserved

**COMPUMAX**

P.O. Box 1139  
Palo Alto, CA. 94301

Sale of this product is intended solely for the personal use of the purchaser. Any copying, resale, gift or commercial use of this product without the express written consent of COMPUMAX, INC. is strictly prohibited.



# M I C R O L E D G E R

## USER MANUAL

### Table of Contents

	<u>page</u>
INTRODUCTION.....	1
BEGINNER'S GUIDE	
System Requirements.....	3
Loading the Programs.....	3
Disk Operating System.....	3
Directory.....	4
Back Up Your Disk.....	4
Keyboard.....	4
Error Messages.....	5
Memory.....	5
Using Additional Data Disks.....	5
The Interactive Journal File.....	5
Deleting Files.....	6
CHAPTER 1 -- Overview	
What is Bookkeeping?.....	7
What is MICROLEDGER?.....	7
The Two Files, CHAFIL and JOUFIL.....	8
A Note on Double Entry Bookkeeping.....	9
CHAPTER 2 -- MICROLEDGER Program Descriptions	
LEDGER1.....	11
LEDGER2.....	12
LEDGER3.....	13
LEDGER4.....	14
LEDGER5.....	15
LEDGER6.....	15
LEDGER7.....	15
CHAPTER 3 -- Getting Started	
How to Run the Programs.....	17
Step-by-Step Instructions.....	17
MICRO BIZ -- Compumax Integrated Software.....	23
SAMPLE RUN.....	Appendix A
FLOWCHARTS AND RECORD STRUCTURES.....	Appendix B
PROGRAM LISTINGS.....	Appendix C

# COMPU MAX

## MICROLEDGER User Manual

ATARI 800

### INTRODUCTION TO COMPU MAX Small Business Software

The CompuMax business application programs are computer programs that keep records and compute transactions for business or personal use. They are designed for people who have minimal familiarity with computers and only a basic knowledge of accounting rules. This is possible because the programs themselves are self-explanatory, telling you exactly what they need at every step. After you have become acquainted with MICROLEDGER, you might want to save even more time and frustration with:

MICROPAY

MICROREC

MICROINV

MICROPERS

ORDER ENTRY

These are described briefly on page 23 of this manual.

#### LIMITATION OF LIABILITIES AND DISCLAIMER OF WARRANTIES

*CompuMax Associates, Inc. has dedicated great care in designing, developing, coding and publishing its programs. It, however, makes no express or implied warranties of any kind with regard to performance or fitness of purpose for any product. In no event shall CompuMax Associates, Inc. be liable for incidental or consequential damages in connection with or arising out of the distribution or use of its products.*

# BEGINNER'S GUIDE

# I N T R O D U C T I O N

## WELCOME TO MICROLEDGER

for the

ATARI

The ATARI version of MICROLEDGER requires a 32K ATARI 800 computer with two disk drives for the two-drive version, or a 24K ATARI 800 computer and one disk drive for the single-drive version. With the two - drive version you may work with up to 200 accounts in the Chart of Accounts and up to 400 transactions (per period) in the Journal File. If you at some time acquire a third disk drive you may assign either file to Drive 3 by changing lines 270 (for the Chart of Accounts) or lines 280 (for the Journal File) to refer to D3 (drive 3). You must change these lines in each program so that they read as follows:

```
270 CFNS="D3:CHAFIL.DAT": CXFNS=D3:CHAFIL.NDX"
```

or

```
280 JFNS="D3:JOUFIL.DAT": JXFNS=D3:JOUFIL.NDX"
```

Now you may also increase the record capacity figures in line 410 of the source code in each program.

### FOR USERS OF THE SINGLE-DRIVE VERSION

Your program will handle 100 records each in the Chart and Journal. If you subsequently acquire a second drive and have 32K of RAM you may change the location of the files by following the procedure outlined above, that is, change line 280 in each program to read: 280 JFNS="D2:JOUFIL.DAT": JXFNS=D2:JOUFIL.NDX. Then increase the record capacity figures in line 410 of each program so that CMAX=200 and JMAX=400. Now your Chart of Accounts (on drive 1) handles 200 records, and the Journal File (drive 2), 400.

### SPECIAL CUSTOMIZATION FEATURE -- for programmers

The ATARI version of MICROLEDGER contains a subroutine called LCOMMON which is common to all of the programs. LCOMMON is listed beginning on page C2. These routines are a 'plus' which allow those with programming knowledge to change the fields in the record structures of the two files with a single change in the programs (record structures shown on page b1). You simply modify or add to the dimension statement in line 310 (CHAFIL) or line 360 (JOUFIL) to include the fields you want. If you add fields, change the value of the total length in line 320 (CLEN) or line 320 (JLEN) to reflect the extra bytes you have used. Add 6 bytes for numeric fields and the string length for alphabetic fields. Then, of course, you must change the input and format statements in the appropriate parts of the programs. One caution: be careful with the JOUFIL header (p. b1 and in line 360 of LCOMMON). JDATE2 must not be changed.

Compumax wishes you an exciting and profitable experience with your new business application packages.

MICROLEDGER features include:

Journal File Running Balance

Available in the ATARI version of MICROLEDGER only, this feature totals your Journal entries for you as they are listed. The last journal entry for any transaction should always bring the total to zero; if it does not, you know you have made an incorrect entry in your Journal and you know which transaction to review to correct it.

Audit Trail

This allows you to keep a permanent record of periodic transactions so that you can later trace them back to the source in case of loss or error.

Trial Balance

Tells you if your accounts will balance before you actually post the dollar amounts, so that you are able to correct errors before they are posted to the Chart of Accounts.

Profit and Loss Statement

This report can be computed for an period covered by the Journal File.

Balance Sheet

Issued at any time for the Year-to-Date period.

Annual Restart Option

Allows you to retain all established accounts in the Chart of Accounts and bring all current and cumulative amounts to zero, except for cumulative figures in the Asset, Liability and Owner Equity accounts, which remain the same.

Periodic Restart Option

Zeroes out all amounts in the "current" column of the Chart of Accounts in preparation to receive Journal entries for the next period.

Using This Manual

Take a few minutes to read through the manual to Chapter 3, Getting Started. Be sure to look over the flowchart at the back, as well as the sample run. Then make sure you know how to bring your ATARI up (read your operator's manual if you haven't done so yet). Now you are ready to follow the step by step instructions in Chapter 3 and enter your own data.

MICROLEDGER Overview

The run begins with a selection of programs called the "menu". You may return to this general menu from any program by selecting the option Run Another Program. MICROLEDGER's general menu contains seven programs. They are:

LEDGER1 -- CHART OF ACCOUNTS PROGRAM  
LEDGER2 -- JOURNAL DATA ENTRY PROGRAM  
LEDGER3 -- LISTING PROGRAM  
LEDGER4 -- TRIAL BALANCE AND POSTING  
LEDGER5 -- PROFIT AND LOSS STATEMENT

## BEGINNER'S GUIDE TO RUNNING THE PROGRAMS

Every computer user falls into this category at some time. Even if you are experienced with the ATARI 800 and application software, it's a good idea to read this over and get acquainted with your system.

### SYSTEM REQUIREMENTS

To run MICROLEDGER you will need:

- 1 ATARI 800 Personal Computer with at least 32K of RAM (Random Access Memory) and ATARI BASIC. The RAM paks come in cartridges that fit into slots in the computer. You can buy these at your retail computer store. The BASIC cartridge, when plugged into the slot, allows you to run programs such as MICROLEDGER written in ATARI BASIC. SEE NOTE BELOW FOR SINGLE DRIVE SYSTEMS.
- 1 video screen — a viewing monitor, color or black and white. You may simply hook up a television screen if you wish. This is where your program prompts, data entry and reports will be displayed.
- 2 ATARI disk drives. MICROLEDGER comes on a 5¼" program disk which you load via drive #1, and includes a data disk containing sample data which is used in drive #2.
- \* 1 ATARI printer. This is not an absolute requirement, but is certainly useful if you want to keep printouts of your files and reports. You may use a 40- or 80-column printer.

### LOADING THE PROGRAMS

MICROLEDGER has an "auto-boot" feature, which means that you do not have to issue any commands to load the programs. Simply turn on the drives and viewing monitor, insert the program disk into drive 1 and the data disk into drive 2, and flip the switch on the main unit; in a few seconds you will see the MICROLEDGER program selection menu displayed on the screen. If you wish to load the programs manually, simply key in:

```
RUN"D: LEDGER      (and depress the RETURN key)
```

### DISK OPERATING SYSTEM (DOS)

The DOS is a set of system programs which allow you to perform certain essential functions such as copying disks and files, loading programs into memory, saving them on disks or tapes, etc. The DOS is contained on your MICROLEDGER program disk and

NOTE: A single drive version of MICROLEDGER is available also. It requires one disk drive and 32K of RAM.

~~is automatically loaded when you load MICROLEDGER. Run MICROLEDGER only with this particular version of the DOS, since it is possible that future versions of ATARI DOS may contain some features incompatible with this version of MICROLEDGER.~~

## DIRECTORY

~~To get a listing of the programs contained on this (or any) disk, follow this procedure:~~

- ~~1. Load MICROLEDGER and choose Option 0 (to quit)~~
- ~~2. Type DOS, then hit the RETURN key. The screen will now display your DOS programs.~~
- ~~3. Select Option A for disk directory. Then hit the RETURN key in response to the next prompt. The disk directory will now appear on the screen.~~

## BACK UP YOUR DISK

Before you do anything it is extremely wise to make a copy of the program disk in case anything happens to "blow up" the programs. This unfortunate event could be caused by exposing the disk to heat, to magnetic erasure, or by power surge or failure while running the program. We recommend that you make a new copy at least once a month, to insure yourself against normal disk wear.

Before making a copy of any diskette, place either a write-protect tab or small piece of masking tape over the small indentation on the right hand side of the original disk to insure that nothing will be inadvertently written onto the master disk.

~~Load your DOS and select Option 1 to format the blank disk. Insert the blank disk in one of the drives and type in the drive number when asked which drive to format. After your disk is formatted, select Option 1 from the DOS. You will be asked to enter the number of your source and destination drives. Then follow the instructions in the copy program, and you will have made a new MICROREC program disk. Follow this same procedure to make copies of your data disks when you need to back up your data files.~~

Write-protect tabs prevent you from writing data on disk, so remove them. Read your ATARI manual about procedures for keeping the read/write heads of your disk drives clean for longer disk wear.

## KEYBOARD

This is pretty similar to a typewriter keyboard. You will use it to respond to questions asked by the program and displayed on the screen. Remember that the number "one" is not the same as the lower case "L" and that "zero" is not the letter "o". You will



hit the RETURN key when you finish entering information for each computer prompt. If you spot a mistake before you have hit the RETURN key, use the delete or insert key to fix it. If you have already hit the RETURN key you must use the change or delete routine in the MICROLEDGER program to correct it.

## ERROR MESSAGES

You will get these occasionally. We have done everything possible to guard you against being thrown out of the program due to incorrect data input, but you may receive error messages due to incorrect procedures, operating system problems or disk damage. ~~If this happens, look up the error code (see your ATARI manual) to try to determine what the problem is. To deliberately leave the program, use the BREAK key. Type RUN or CONT to bring back your program.~~

## MEMORY

When you load programs you are actually bringing the program from "long term" storage on the disk and putting it into the "short term" memory of the computer itself. Only one of the six programs can be retained in memory at any one time. Your program and data will remain in the RAM memory of the computer until you load a different program by selecting a different number from the main Program Selection Menu or turn off the power, but they will remain on the disk until you delete them using a program or DOS command or until you write over them. When you enter data by way of the keyboard, the data goes into RAM and then is automatically stored on the data disk.

## USING ADDITIONAL DATA DISKS

If you have filled up the available space on your MICROLEDGER disk(s) (you will receive a message on the screen to this effect when this occurs) or if you just want to keep some of your data on a separate disk, you will need to know how to use extra data disks.

~~You must FORMAT new disks before you can store data on them. Load the DOS on the MICROLEDGER program disk (see "DIRECTORY" section for procedures) and insert a blank disk. Then select Option "1" from the DOS menu and follow the instructions to do the formatting.~~

~~BE SURE TO LABEL ALL DISKS SO THAT YOU KNOW WHAT FILES AND DATES THEY REFER TO.~~

## THE INTERACTIVE JOURNAL FILE

MICROREC, MICROPAY, MICROINV and MICROPERS are interactive with the General Ledger package, MICROLEDGER, through the Journal File.

Each of the packages generate a Journal File which can then be posted to MICROLEDGER's Chart of Accounts File. If you wish to list any of the subsidiary Journal Files (those created by MICRO-PAY, MICROREC, MICROINV and MICROPERS), simply insert the dual drive MICROLEDGER program disk and type the name of the subsidiary Journal File you wish to list (PAY, REC, INV or PERS). Then you may list, edit or post your subsidiary Journal File using Options in the MICROLEDGER program to do this.

### DELETING FILES

~~If for any reason you wish to delete a file you may use option D in the ATARI DOS (contained on the Program disk) to do this. Load the DOS, select option D, and when you are prompted with DELETE FILE SPEC?~~

~~type D2:filename~~

~~where you type the name of the file you wish to delete in the "filename" slot.~~

~~To delete the Journal File in MICROLEDGER, type:~~

~~D2:J\*~~

~~You will then be prompted with D2:JOURNAL.DAT?~~

~~Answer "Y".~~

~~The next prompt is: D2:JOURNAL.DAT?~~

~~Again answer "Y".~~

~~Now both your files have been deleted.~~

The above description applies to files located on the disk in drive 2. If you wish to delete files on drive 1, type "D1" in place of "D2".

# CHAPTER 1

## MICROLEDGER

### What is Bookkeeping?

Bookkeeping is a system whereby you collect your records covering all of your transactions for a period of time, summarize the different kinds of transactions by putting them into the appropriate accounts, and finally match those accounts which represent money coming in against those for money flowing out. In this way you are able to determine your profits or losses for that period.

### What is MICROLEDGER?

MICROLEDGER is a series of six computer programs that do the bookkeeping for a small business. You will open two files, a Chart of Accounts File (CHAFIL, which covers a fiscal year) and a Journal File (JOUFIL, which covers smaller periods). ~~The six MICROLEDGER programs carry out all data entry, correction, matching, computing and reporting necessary to obtain your Profit and Loss Statement, referring to each period and your Balance Sheet at the end of each period.~~

MICROLEDGER will be able to help you identify potential problem sources in the accounting end of your business. It delivers straightforward financial reports, isolating each component of your budget so that you can compare individual and cumulative balances over time, note trends and spot problem areas. MICROLEDGER IS fast, accurate and easy to use, saving you time and freeing personnel for other tasks.

To utilize this system you ~~first run Program 1 to set up an initial Chart of Accounts File (CHAFIL). Running a program merely means that you select a particular LEDGER by typing its number into the computer, and then responding to the questions the program asks you.~~ There is nothing more that you must do to CHAFIL until the next fiscal year unless you want to insert, delete or change information in it. MICRO-LEDGER itself will keep this file updated. The Balance Sheet and Profit and Loss Statement will be issued by processing new information from the Journal File (JOUFIL). You will restart JOUFIL every period, describe your transactions, obtain a trial balance and post the data to CHAFIL by running Program 4. Then you may generate your Profit and Loss Statement and Balance Sheet simply by running Programs 5 and 6. You always have the option to list all or part of your accounts in CHAFIL or JOUFIL -- that is, to run them on the screen or as a printout to see what you have and check for errors. When you are satisfied with your postings, you will purge JOUFIL and initialize it again for the next period. When you purge the file you may also purge and rewrite CHAFIL, but you may find that you never need to do so unless you want to dramatically alter your accounting system. Instead, you may want to use the Periodic Restart or Annual Restart Options.

These procedures will be explained in more detail in Chapter 3.

### The Two Files, CHAFIL and JOUFIL

#### CHAFIL

MICROLEDGER provides you with record keeping services using two collections of data called files. You will select the information to be included in the files, and MICROLEDGER will format it and compute it for you. ~~The Chart of Accounts File (CHAFIL) remains active for an entire fiscal year and should contain general categories under which you can record all assets, liabilities, equities, revenues and expenses.~~ Take a look at the sample Chart of Accounts File listing in the sample run. You may use this chart as it is shown, or you may modify it by leaving out accounts you don't need and adding others which are relevant to your particular business. Or you may decide to use none of the ones shown and invent a set of accounts all your own. However, when you select the accounts you wish to use in CHAFIL keep in mind that (1) these will remain active for a full fiscal year, and (2) you ~~should be able to post every transaction to one of these accounts.~~ You might want to include "other" accounts, such as "Other Non-Current Assets" or "Other Direct Expenses" to make sure that your transactions will fit into some category.

But don't worry if you find yourself with a transaction and nowhere to put it -- ~~you can always update CHAFIL to insert new accounts, change existing accounts or delete unnecessary ones.~~ The amounts in CHAFIL accounts may be updated whenever you wish by posting your transactions from JOUFIL.

## JOUFIL

The second file is the Journal File (JOUFIL). ~~This file is a collection of records containing all of your transactions for a certain period of time. A period may be a month, a quarter, a week -- or any irregular length of time you choose. In JOUFIL you will enter specific descriptions of transactions along with the amount, the date, and an account number corresponding to an account number contained in CHAFIL.~~ JOUFIL entries are made according to the principles of double entry bookkeeping -- that is, ~~every transaction will be entered twice, both as a debit and a credit. Look over the Journal entries in the sample run at the back to see how this is done.~~ (If you are interested in a more comprehensive system which will do the double entry for you, try CompuMax's MAXILEDGER.)

The ATARI version of MICROLEDGER contains the new "Running Balance" feature in the Journal File listing. This additional feature balances your journal entries for you as you input them, ~~provided that you group together the debits and credits pertaining to each transaction.~~ The last journal entry for any single transaction should always bring the balance to zero; if it does not, then you know you have made a mistake in your data entry. Look at the Journal File listing in the sample run for an example of this feature.

~~After you list all of your transactions for this period in JOUFIL, the Trial Balance and Posting program (Ledger 4) will tell you whether your entries balance and give you the option to post the new entries to CHAFIL. After posting, the Chart of Accounts File is current as of the end of the period of JOUFIL. You are now able to run the Profit and Loss Statement (Ledger 5) and Balance Sheet (Ledger 6) for a clear statement of your standing. Before you begin your Journal entries for a new period you will probably want to run the Periodic Restart Option to zero out the current amounts (for the previous period) from the current column in the Chart of Accounts.~~

## A NOTE ON DOUBLE ENTRY BOOKKEEPING

Entering a positive amount into account numbers 101-299 and 301-999 results in a DEBIT to those accounts.

Entering a positive amount into account numbers 301-799 results in a CREDIT to those accounts.

~~Entering a negative amount into account numbers 301-799 generates a DEBIT to those accounts.~~

~~Entering a negative amount into account numbers 101-299 and 801-999 is a CREDIT to these accounts.~~

If you plan to use MICROLEDGER interactively with other Compumax packages (MICROPAY, MICROREC, MICROINV, MICROPERS, and ORDER ENTRY) you should set up your Chart of Accounts to contain the following accounts (descriptions are approximate):

- 110 - Cash in Bank
- 130 - Accounts Receivable
  
- 310 - Accounts Payable
- 320 - Shipping Payable
- 330 - Sales Tax Payable
  
- 710 - Direct Sales
  
- 810 - Merchandise Expenses

This is because the other modules contain routines which will automatically debit and credit their transactions to these account numbers. It is not absolutely necessary, however, to organize your Chart of Accounts this way, as the automatic debit and credit account numbers in the other modules may be modified if you wish.

#### THE SOFTWARE PACKAGE

You probably know what you want from your General Ledger system or you wouldn't be bothering with G/L software. Different businesses, however, have different needs from bookkeeping software. Compumax has endeavored to provide the G/L functions essential to small businesses, along with some additional features which should prove useful to many of you. We could not supply exactly the combination of features desired by everyone, but we believe that this compact program will handle the A/R needs of most small businesses without modification. And for those of you who want to make modifications, and choose to modify the programs rather than your accounting procedures, Compumax has provided the source code, record structures and some guidelines to tailoring the software, and invites those of you versed in ATARI BASIC to customize this package yourselves.

# CHAPTER 2

## MICROLEDGER PROGRAM DESCRIPTIONS

Look again at the selection of programs in MICROLEDGER:

- LEDGER1 - CHART OF ACCOUNTS PROGRAM
- LEDGER2 - JOURNAL FILE DATA ENTRY PROGRAM
- LEDGER3 - FILE LISTING PROGRAM
- LEDGER4 - TRIAL BALANCE AND POSTING
- LEDGER5 - PROFIT & LOSS STATEMENT
- LEDGER6 - BALANCE SHEET
- LEDGER7 - FILE BACKUP

Each program in MICROLEDGER has its own sub-menu -- a selection of options from which you may choose. The following is a description of what each option will do and the data (if any) it requires you to enter.

### LEDGER1 - CHART OF ACCOUNTS PROGRAM

#### Option: 11 -- Update Chart of Accounts File

~~Use this option to add your starting accounts to the Chart of Accounts or to make modifications to it. You may ADD, CHANGE or DELETE information (the computer will ask you which you want to do). The program will ask you to enter the account number. Type the number of the account you wish to change or add to the Chart. Then that account (or blank record) will be displayed, and you will be given a choice of 5 options: E (exit from update of this record), C (change this record -- or if you are adding a record, use this to enter the information), D (delete this record), F (go forward in the file to the next record), B (go backward in the file to the last record). When you have added, updated or deleted as many records as you wish, enter 0 (zero) when asked for the account number and you will be returned to the program 1 menu.~~

#### 12 -- Change File Header Information

~~Use this option to modify your header record. The header record stores your Chart of Accounts File title and the relevant dates. You may change either of these if you wish by using this option, but you may not alter "number of records"; the system keeps track of this number for you. Just hit the RETURN key if you do not wish to make further changes, and you will be returned to the Program 1 menu.~~

Option: 13 -- Do Periodic Restart of Chart of Accounts

~~This option zeroes out all amounts in the "current" column of the Chart of Accounts. When you post your Journal to the Chart of Accounts, the transaction amounts are automatically added both to the current column and to the cumulative (year-to-date) column. When all transactions have been posted for a period you will have a record of period totals in the current column. Before you start a new period you may run the Periodic Restart option to zero out the current column in preparation to receive your new journal entries.~~

14 -- Do Annual Restart of the Chart of Accounts

This option will re-initialize the master file for the next fiscal year: all current figures will become zero, cumulative figures will become zero in the Revenue and Expense accounts, and cumulative figures will remain the same in Asset, Liability and Owners Equity accounts.

15 -- Initialize or Re-Initialize Chart of Accounts

~~This option will open your Chart of Accounts file. You must select this option first when starting a new data diskette. If you decide at some point to purge and re-initialize your Chart of Accounts, run this option to do so. Be quite certain that you want to run this option as it will delete your entire Chart of Accounts, including Account numbers, descriptions and amounts. If you merely want to delete the amounts for all of the individual accounts, use Option 14 instead.~~

0 -- Return to Master Menu

Select this option to get back to the main program selection menu.

LEDGER2 - JOURNAL DATA ENTRY PROGRAM

Option: 21 -- Add or Insert New Journal Records

~~After you initialize JOUFIL, enter your new accounts in proper input form. You may also insert a new entry between two others by running this option. Inserts take place after the record number you specify. To add records to the end of the file, just hit RETURN and the program will assign the next available record number. To exit from this option, enter "E" when asked for the record number. You will not be allowed to enter a record number here which~~



NOTE: Every pair (or sometimes three or more) of your Journal entries pertaining to the same transaction should balance; that is, the amounts should total zero when added together. You can check the "running balance" column in the Journal File Listing (Option 33) to make sure that you have entered your accounts correctly.

Review the note on double entry bookkeeping on pages 9 and 10 if you are confused about the sign of the amounts ("+" or "-"). If you are still unsure, refer to a manual on double entry accounting practices.

Option: 22 -- Update Existing Journal Records

~~Use this option to make modifications to your Journal records. You will be asked for the~~ record number you wish to update -- if you don't know it, it may be found in the listing program (Option 33). Type in the number, and the record will be displayed. You will be given five options: E (exit from update of this record), C (change this record), D (delete this record), F (go forward in the file to the next record), B (go backward in the file to the last record). When you have updated and deleted as many records as you wish, enter 0 (zero) to exit from this option.

23 -- Change File Header Information

Use this option to modify your header record.

24 -- Initialize or Re-Initialize Journal File

This option will open your Journal File. You must select this option before running other options in program 2 when you run the programs for the first time. After you have posted your Journal File to the Chart of Accounts, you will run this option again to purge the file and re-initialize it. NOTE: If you do not run this option to purge and re-initialize, subsequent Journal entries will be added to the already existing file, and you will run the risk of "double posting" your previous entries.

0 -- Exit

Returns you to the main menu.

LEDGER3 - LISTING PROGRAM

Option: 31 -- List the Chart of Accounts File

Lists the entire file. In addition, it shows the sub-totals by category (such as Revenues, Direct Expenses, etc.) to help in the verifica-

total ASSETS equal your total LIABILITIES plus OWNER EQUITIES. This is easy because the sub-totals are shown clearly.

When you run this option the file will be listed continuously. If you want to stop the listing at any point, hit the CONTROL key and the number 1 (one) key simultaneously. Use these two keys to continue the listing when you are ready. You may list the Chart of Accounts on the printer or on the screen.

Option: 32 -- List a Selected Range of Accounts in the Chart

You will be asked to give the lowest and highest account numbers for the range you wish to see. The CONTROL and 1 keys will stop and restart the listing for you.

33 -- List the Journal File

File may be listed on printer or CRT. This option lists the entire Journal File. Note that negative numbers are displayed in parentheses. The running balance column, which totals the entries as they appear, is displayed on the right. Each group of entries pertaining to a transaction should total up to zero. If errors are found, use the Update Option (Option 22) to correct them. Use the CONTROL and 1 keys to stop and start the listing.

34 -- List a Selected Range of Journal Records

You will again be asked for the lowest and highest numbers of the range you wish to see. Use the CONTROL and 1 keys to stop and restart the listing.

35 -- Run Another Program

LEDGER4 - TRIAL BALANCE AND POSTING

Trial Balance, Followed by Option to Post

This program computes the sub-totals and tells you whether or not they balance. If they do not balance, it tells you the difference, and specifies which are larger, the ASSETS or the LIABILITIES and OWNERS EQUITIES. Then you can review your journal entries and make up your mind what adjustments to make (just look back at the Journal File Listing and see which transaction doesn't total out at zero). After your trial balance comes out correctly, you can POST, a procedure which enters all journal transactions into the appropriate accounts in the chart.

Posting also adds your income (revenue minus expenses) for that period into the Retained Earnings account. Posting adds the amounts to both the "current" column and the "cumulative" column in the Chart of Accounts.

Transactions are now output sorted by account number. This is your audit trail. Once you have posted, you must re-initialize your Journal File in order to empty it and prepare it to accept new transactions. If you do not re-initialize, the old records will remain in the file and you will run the risk of posting them twice.

#### LEDGER5 - PROFIT AND LOSS STATEMENT

This program is a report generator that produces your P & L Statement, also called the Income Statement, for the current period. The program extracts this information from the "current" amounts contained in your Chart of Accounts.

#### LEDGER6 - BALANCE SHEET

This program is a report generator that produces your Balance Sheet, often referred to as a Position Statement. This information comes from the "cumulative" amounts in your Chart of Accounts, and the report refers to the year-to-date period.

#### LEDGER7 - FILE BACKUP

Option: 71 -- Back Up Chart of Accounts

Use this option to make a backup copy of your Chart of Accounts before you do your posting. Copies will actually be made of two files -- the data file and its corresponding index file. You do not need to concern yourself, however, with this distinction, but you must use this option to back up the Chart of Accounts rather than the filecopy option of the ATARI DOS because this option backs up both of the necessary files.

(cont. next page)

#### READ THIS IF YOU HAVE CHANGED DRIVE ASSIGNMENTS:

NOTE: On 2-drive systems the Journal File resides in Drive 2 and the Chart file on Drive 1. If you have changed the drive assignments answer "N" when the program prompts you with "Am I correct (Y or N)?" Then enter the filename and drive number in the correct format (D\_:FILENAME.DAT) and (D\_:FILENAME.NDX) (for both data and index files): the drive # goes in the space after "D".

You will now be asked which drive the copied file should go in. Type in the number of the drive.\*

At this point the program will read the old file and ask you to insert a new disk in the appropriate drive. Then it will write the file onto the new disk. (Don't forget that this disk must be formatted first using Option I of the DOS if it has not been used before.) Be sure to label the disk accurately with filenames and appropriate dates. Now if you find that there is an error in your previous data, you will be able to recover the original files, make the necessary corrections, and re-run your reports for that period.

You may use the "Duplicate Disk" option of the ATARI DOS provided on your program disk (Option J) to make disk copies of the Chart of Accounts disk as long as you do not wish to rename the files. Remember to FORMAT the disks first.

\*If you wish to rename the file, answer "N" when prompted with "Is this O.K. (Y or N)?" Then enter the new name and drive assignment for the file in the correct format (D\_:FILENAME.DAT and D\_:FILENAME.NDX).

Option: 72 -- Back Up Journal

Make a backup copy of your Journal File before you post using this option. See the description of Option 71.

# CHAPTER 3

## GETTING STARTED

You are just about ready to enter your own accounts and run the programs, but first take a few minutes to look over the sample run at the back of the manual. Practice running the data diskette containing this sample data. Also take a look at the system flowchart at the back. Wehn you've done this, you are ready to enter your own account information and set up your files.

### How to Run the Programs

Load the program and data diskette into your disk drives. Since these programs are "auto-boot", all you have to do is turn on the drives and CRT, put in the disks, and turn on the switch at the terminal. Now MICROLEDGER will assume command and tell you what to do at every step.

All information is fed into or taken out of the system by means of the keyboard in response to questions typed out autamatically by the computer. Answer all questions, unless instructed otherwise, by typing the Arabic number of the operation desired. (Remember that the Arabic number "one" is not the lower case "L", and the number "zero" is not the same as the letter "O".) If you make a mistake before you hit the RETURN key, you may use the DELETE key to correct it. After you finish answering a question or feeding in new data, depress the RETURN key in order to proceed to the next step.

### STEP-BY-STEP:

#### The Sequence of Running the Programs in MICROLEDGER

STEP 1 -- Prepare the account numbers, names of the accounts, and starting balance amounts using the format shown in Figure 1. Write out the accounts on the Chart of Accounts Input Form provided on page 21.

ACCOUNT NUMBER,	ACCOUNT NAME,	STARTING BALANCE
110,	Cash in Banks,	4100
115,	Cash on Hand,	600
120,	Notes Receivable,	1409

To get an idea of the kinds of accounts you'll need, take another look at the accounts in the sample run. You must number all accounts in accordance with the guidelines in Figure 2 below, and you must open at least one account in each category (the balance may be zero, however). Account 600 MUST BE FOR RETAINED EARNINGS, and you may not assign the numbers 601-699 to any accounts.

101 - 199	for Current Assets
201 - 299	for Non-Current Assets
301 - 399	for Current Liabilities
401 - 499	for Long-Term Liabilities
501 - 599	for Owners Equities
600	MUST BE FOR RETAINED EARNINGS
701 - 799	for Revenue Accounts
801 - 899	for Direct Expense Accounts
901 - 999	for G. & A. Expense Accounts

Run Option 15 to Initialize your Chart of Accounts, and Option 11 to enter your accounts.

STEP 2 -- Write out your transactions from the period you have chosen on a Journal Input Form (page 22) in the format shown in Figure 3 below:

DATE,	DESCRIPTION,	ACCOUNT NUMBER,	AMOUNT
06/09/77,	P.C. Board XF6,	145,	90.50
06/09/77,	Check #197 - UCB,	110,	-90.50
06/10/77,	Sale to G. Smith,	710,	2107.48
06/10/77,	G. Smith Invoice,	130,	2107.48

MICROLEDGER Journal Input Format

Fig. 3

The amount must be a positive number if the transaction causes the account to get LARGER (the amount goes UP); the sign must be "-" (minus) if the amount gets SMALLER (the amount goes DOWN). Run LEDGER 2, Option 24 to INITIALIZE the Journal File. Run Option 21 to add records.

STEP 3 -- Run LEDGER3, Option 31 to list the Chart of Accounts File. Check the listing for any errors you may have made in entering the data such as:

- An account does not conform to guidelines in Fig. 2
- An account was left out.
- There is no 600 RETAINED EARNINGS account.
- An account number was used more than once.

If there are errors, run Option 11 in Program 1 to Update the Chart of Accounts. Then run the listing option again.

STEP 4 -- Run LEDGER3, Option 33 to list the Journal File. Check the listing for errors like:

Missed a transaction
Wrong account number used
Mistake in the amount
Wrong sign used for the amount

Typical Errors in Journal Listing

Fig. 5

If there are errors, run LEDGER2, Option 22 to update the Journal File. Then run the listing program again.

STEP 5 -- When you have verified that your data is accurate, it is strongly advised that you back up your files in case you discover errors at a later date, or somehow lose your data. Then you will be able to recover your original information. You may do this in two ways:

- 1) Use the Program 7, the backup program, or
- 2) Copy the entire disk onto another disk by using the "Duplicate Disk" option in the ATARI DOS, Option J. The DOS is provided on the program disk. (Don't forget to FORMAT the blank disk first, using option I of the ATARI DOS.)

STEP 6 -- Run LEDGER4, the Trial Balance and Posting program. Your trial balance will print with one of three messages:

- 1) If the message is "ASSETS BALANCE LIAB. + O.E.", then answer "Y" to the question "DO YOU WANT TO POST?" Then go to step 7.
- 2) If the message is "ASSETS ARE OVER LIAB. + O.E. BY ...", then you have too much in Assets, or not enough in Liabilities or Owners Equities. Answer "N" to the question "DO YOU WANT TO POST?" in this case. Run LEDGER3 to list your files, then run LEDGER2 to update existing transactions: either diminish Asset accounts, or increase Liability or Owners Equity accounts by the amount indicated in the message. Then repeat steps 5 and 6.

- 3) If the message, finally, is "LIABILITIES + O.E. ARE OVER ASSETS BY ...", then you have too much in Liabilities or Owners Equities, or not enough in Assets. Run LEDGER2

either increase Asset accounts, or decrease Liability or Owners Equity accounts by the amount indicated in the message. Then repeat steps 5 and 6.

When you finally POST, your journal transactions will be output sorted by account number and at the same time posted to the Chart of Accounts. The output which is sorted by account number is your Audit Trail. The amounts posted to the Chart of Accounts will be posted to both the "current" column and the "cumulative" (year-to-date) column.

STEP 7 -- Run LEDGER5 and LEDGER6. Check out the Profit and Loss Statement carefully. Is your INCOME realistic? Is it what you want it to be for this period? Similarly, Check out the Balance Sheet in detail. Is there a possibility for compensating errors (the two sides balance, but both are too large or too small by the same amounts)?

This is where you may profitably consult with your CPA, accountant or bookkeeper. Changes may be made to your statements as many times as you like by following the procedures indicated in step 6.

When you are finally satisfied with both reports, proceed to step 8.

STEP 8 -- If this posting has completed a "period" (a week, month, or quarter, or period of your own designation), run the Periodic Restart Option (Option 13) to zero out the "current" column in your Chart of Accounts. If the period starts a new fiscal year you may also want to run the Annual Restart Option, Option 14.

STEP 9 -- Return to Step 2 to enter your new Journal Transactions. Don't forget to re-initialize your Journal File!

CONGRATULATIONS! You have just set up and run your MICROLEDGER bookkeeping system on the ATARI 800.







# COMPUMAX

## MICRO BIZ

### COMPUMAX INTEGRATED MICROBUSINESS SOFTWARE

MICRO BIZ is composed of six software packages, MICROLEDGER, MICROPAY, MICROREC, MICROINV, MICRO-PERS, and ORDER ENTRY. They may be purchased individually or in combination with other CompuMax packages, and may be contained on a single disk for use on systems which have sufficient space on the program disk: MICROPOLIS 1053 (in MICROPOLIS BASIC, MICROSOFT, CBASIC2); CROMEMCO; APPLE II dual density; and COMMODORE 8032 with DOS 2.0, BASIC4 with drive 8050.

Each module may be used alone to provide powerful recordkeeping services, or in combination with other modules for use as a comprehensive business accounting system. Two complementary methods of integrating the packages are available:

- I. If MICROLEDGER is part of the system purchased the job stream is integrated as the General Ledger package, MICROLEDGER, receives data to update its files from the MICROPAY, MICROREC, MICROINV, and MICRO-PERS packages via the interactive Journal File.
- II. If ORDER ENTRY is part of the packages purchased, the job stream is integrated as ORDER ENTRY furnishes update information *directly* to Accounts Payable, Accounts Receivable, and Inventory Control systems. In addition, ORDER ENTRY *indirectly* updates the General Ledger package (MICROLEDGER) through its interface with MICROPAY, MICROREC, and MICROINV.

The COMPUMAX business application programs are sophisticated systems with documentation written with the novice computer user in mind. They are easy to use, yet powerful in their capabilities. Moreover, COMPUMAX supplies the BASIC source code so that the programs are easy to modify.

*COMPUMAX programs are available for:*

TRS-80 Models I and II	CROMEMCO
APPLE II	MICROSOFT under CP/M
PET	CBASIC2 under CP/M

# COMPUSTAR

## APPENDIX A

### SAMPLE RUN

THE MICROLEDGER SYSTEM

SELECT PROGRAM OPTION:

- 1 CHART OF ACCOUNTS DATA ENTRY/UPDATE
- 2 JOURNAL FILE DATA ENTRY/UPDATE
- 3 FILE LISTINGS
- 4 TRIAL BALANCE AND POSTING
- 5 PROFIT AND LOSS STATEMENT
- 6 BALANCE SHEET
- 7 FILE BACKUP

0 QUIT

SELECT ? :

...please wait...

LEDGER1 — MAINTAIN CHART OF ACCOUNTS

SELECT AN OPTION:

- 11 UPDATE CHART OF ACCOUNTS FILE
- 12 CHANGE FILE HEADER INFORMATION
- 13 DO PERIODIC RESTART
- 14 DO ANNUAL RESTART
- 15 INITIALIZE OR REINITIALIZE  
CHART OF ACCOUNTS FILE
- 0 RETURN TO MASTER MENU

OPTION?ANNUAL RESTART 14

Are you SURE you want to RESTART  
the CHART OF ACCOUNTS file?

Are you SURE (Y OR N)? Y

ENTER DATE (MMDDYY) ? 1981  
JAN 01,81

# COMPUMAX

ALL CURRENT VALUES, REVENUES,  
AND EXPENSES WERE REINITIALIZED.  
LEDGER1 — MAINTAIN CHART OF ACCOUNTS

SELECT AN OPTION:

- 11 UPDATE CHART OF ACCOUNTS FILE
- 12 CHANGE FILE HEADER INFORMATION
- 13 DO PERIODIC RESTART
- 14 DO ANNUAL RESTART
- 15 INITIALIZE OR REINITIALIZE  
CHART OF ACCOUNTS FILE
- 0 RETURN TO MASTER MENU

OPTION? 0

...please wait...

select subsidiary journal file via  
REC/PAY/PER/INV/- entry.THE MICROLE  
DGER SYSTEM

SELECT PROGRAM OPTION:

- 1 CHART OF ACCOUNTS DATA ENTRY/UPDATE
- 2 JOURNAL FILE DATA ENTRY/UPDATE
- 3 FILE LISTINGS
- 4 TRIAL BALANCE AND POSTING
- 5 PROFIT AND LOSS STATEMENT
- 6 BALANCE SHEET
- 7 FILE BACKUP

0 QUIT

SELECT ? 3

...please wait...

LEDGER3 — LIST FILE CONTENTS

SELECT AN OPTION:

- 31 LIST ENTIRE CHART OF ACCOUNTS
- 32 LIST SELECTED RANGE IN  
CHART OF ACCOUNTS
- 33 LIST ENTIRE JOURNAL FILE
- 34 LIST SELECTED RANGE OF  
JOURNAL RECORDS

# COMPUTER

OPTION? LIST ALL OF CHART OF ACCOUNTS ?:

OUTPUT TO GO TO PRINTER (Y OR N)? Y

...PLEASE WAIT...

CHART OF ACCTS AS OF JAN 01,81

---

THERE ARE 16 ACCTS IN THE FILE

ACCT #	ACCOUNT NAME CURRENT AMT	CUMUL. AMT
110	CASH IN BANK \$0.00	\$8000.00
115	CASH ON HAND \$0.00	\$600.00
120	ACCOUNTS RECEIVABLE \$0.00	\$31927.77
	TOTAL CURRENT ASSETS \$0.00	\$43527.77
210	INVESTMENTS \$0.00	\$21021.00
215	REFUNDABLE DEPOSITS \$0.00	\$0.00
	TOTAL NON-CURRENT ASSETS \$0.00	\$21021.00
310	NOTES PAYABLE \$0.00	\$8398.00
320	U.P.S., ACCT PAYABLE \$0.00	\$32.00
330	CA. SALES TAX, PAYABLE \$0.00	\$234.56
	TOTAL CURRENT LIABILITIES \$0.00	\$9154.56
410	LONG TERM DEBT \$0.00	\$41041.00
	TOTAL LONG TERM LIABILITIES \$0.00	\$41041.00

# COMPUNRA

510	OWNER EQUITY		
	\$0.00	\$11071.00	
	TOTAL OWNER EQUITY	\$11071.00	
	\$0.00	\$11071.00	

600	RETAINED EARNINGS		
	\$0.00	\$0.00	
	TOTAL RETAINED EARNINGS	\$0.00	
	\$0.00	\$0.00	

710	DIRECT SALES		
	\$0.00	\$0.00	
720	OTHER OPERATING INCOME		
	\$0.00	\$0.00	
	TOTAL REVENUE	\$0.00	
	\$0.00	\$0.00	

820	MATERIALS PURCHASED		
	\$0.00	\$0.00	
840	DIRECT LABOR		
	\$0.00	\$0.00	
	TOTAL DIRECT EXPENSES	\$0.00	
	\$0.00	\$0.00	

910	RENTALS PAID		
	\$0.00	\$0.00	
	TOTAL G. & A. EXPENSE	\$0.00	
	\$0.00	\$0.00	

TOTAL ASSETS	\$0.00	\$11071.00
--------------	--------	------------

TOTAL LIABILITIES & DEFERRED INCOME	\$0.00	\$11071.00
-------------------------------------	--------	------------

LEDGER3 — LIST FILE CONTENTS

- SELECT AN OPTION:
- 31 LIST ENTIRE CHART OF ACCOUNTS
  - 32 LIST SELECTED RANGE IN CHART OF ACCOUNTS
  - 33 LIST ENTIRE JOURNAL FILE
  - 34 LIST SELECTED RANGE OF JOURNAL RECORDS
  - 0 RETURN TO MASTER MENU

OPTION?LIST ALL OF JOURNAL FILE 33

OUTPUT TO GO TO PRINTER (Y OR N)? Y

...PLEASE WAIT...

JOURNAL FILE LISTING  
 PERIOD JAN 01,81 THRU JAN 31,81

---

JOURNAL FILE HAS 5 RECORDS

REC	ACCT	TRANSACTION	DATE	AMOUNT	RUNNING BALANCE
001	840	PAYCHECK, J. WILSON	JAN 07,81	\$2199.02	\$2199.02
002	840	PAYCHECK, W. THOMAS	JAN 07,81	\$1788.98	\$3987.90
003	110	PAYCHECKS DRAIN	JAN 07,81	(\$3987.90)	\$0.00
004	820	OFFICE SUPPLIES	JAN 10,81	\$325.50	\$325.50
005	110	CHECK FOR OFFICE SUPPLIES	JAN 19,81	(\$325.50)	\$0.00

LEDGER3 — LIST FILE CONTENTS

SELECT AN OPTION:

- 31 LIST ENTIRE CHART OF ACCOUNTS
- 32 LIST SELECTED RANGE IN  
 CHART OF ACCOUNTS
- 33 LIST ENTIRE JOURNAL FILE
- 34 LIST SELECTED RANGE OF  
 JOURNAL RECORDS
- 0 RETURN TO MASTER MENU

OPTION? 3

...Please wait...

select subsidiary journal file via  
 REC/PAY/PER/INM- entry. THE MICROLE  
 DGER SYSTEM



SELECT PROGRAM OPTION:

- 1 CHART OF ACCOUNTS DATA ENTRY/UPDATE
- 2 JOURNAL FILE DATA ENTRY/UPDATE
- 3 FILE LISTINGS
- 4 TRIAL BALANCE AND POSTING
- 5 PROFIT AND LOSS STATEMENT
- 6 BALANCE SHEET
- 7 FILE BACKUP
  
- 0 QUIT

SELECT ? 4

...Please wait...  
TRIAL BALANCE AND POSTING PROGRAM

AUDIT TRAIL,  
OUTPUT TO GO TO PRINTER (Y OR N)? Y

...PLEASE WAIT...

TRIAL BALANCE —  
PERIOD JAN 01.81 THRU JAN 31.81

EXPENSES :	\$4313.48
REVENUES :	\$0.00
INCOME :	(\$4313.48)
TO ASSETS:	(\$4313.48)
TO LIAB. :	\$0.00
TO R.E. :	(\$4313.48)

ASSETS BALANCE LIABILITIES  
+ OWNER'S EQUITY  
ASSETS BALANCE LIABILITIES  
+ OWNER'S EQUITY

DO YOU WANT TO POST (Y OR N)? Y

ARE YOU SURE (Y OR N)? Y

AUDIT TRAIL OF POSTED TRANSACTIONS

ACCT	REC	TRANSACTION	DATE	AMOUNT
			DATE	AMOUNT
110	003	PAYCHECKS DRAWN		
			JAN 07,81	(\$3987.90)
110	005	CHECK FOR OFFICE SUPPLIES		
			JAN 10,81	(\$325.50)
820	004	OFFICE SUPPLIES		
			JAN 10,81	\$325.50
840	001	PAYCHECK, J. WILSON		
			JAN 07,81	\$2199.02
840	002	PAYCHECK, W. THOMAS		
			JAN 07,81	\$1788.88

POSTING COMPLETE

...Please wait...

select subsidiary Journal file via  
RED/PAY/PER/INV/- entry THE MICROLE  
DGER SYSTEM

SELECT PROGRAM OPTION:

- 1 CHART OF ACCOUNTS DATA ENTRY/UPDATE
- 2 JOURNAL FILE DATA ENTRY/UPDATE
- 3 FILE LISTINGS
- 4 TRIAL BALANCE AND POSTING
- 5 PROFIT AND LOSS STATEMENT
- 6 BALANCE SHEET
- 7 FILE BACKUP

0 QUIT

SELECT ?

...Please wait...

LEDGER3 — LIST FILE CONTENTS

SELECT AN OPTION:

- 31 LIST ENTIRE CHART OF ACCOUNTS
- 32 LIST SELECTED RANGE IN CHART OF ACCOUNTS
- 33 LIST ENTIRE JOURNAL FILE
- 34 LIST SELECTED RANGE OF JOURNAL RECORDS
- 0 RETURN TO MASTER MENU

OPTION? LIST ALL OF CHART OF ACCOUNTS 31

OUTPUT TO GO TO PRINTER (Y OR N)? Y

...PLEASE WAIT...

CHART OF ACCTS AS OF JAN 31, 81

---

THERE ARE 16 ACCTS IN THE FILE

ACCT #	ACCOUNT NAME	CURRENT AMT	CUMUL. AMT
110	CASH IN BANK		
	(\$4313.40)		\$3686.60
115	CASH ON HAND		
	\$0.00		\$600.00
130	ACCOUNTS RECEIVABLE		
	\$0.00		\$71627.77
	TOTAL CURRENT ASSETS		\$75914.37
	(\$4313.40)		\$71600.97
210	INVESTMENTS		
	\$0.00		\$21021.00
215	REFUNDABLE DEPOSITS		
	\$0.00		\$0.00
	TOTAL NON-CURRENT ASSETS		\$21021.00
	\$0.00		\$21021.00
310	NOTES PAYABLE		
	\$0.00		\$8000.00
320	U.P.S., ACCT PAYABLE		
	\$0.00		\$32.00
330	CA. SALES TAX, PAYABLE		
	\$0.00		\$234.56
	TOTAL CURRENT LIABILITIES		\$8266.56
	\$0.00		\$8154.56
410	LONG TERM DEBT		
	\$0.00		\$41041.00
	TOTAL LONG TERM LIABILITIES		\$41041.00
	\$0.00		\$41041.00

510      COMMON STOCK  
           \$0.00            \$1107.00  
 TOTAL OWNER EQUITY    (LESS P.A.E.)  
           \$0.00            \$1107.00

600      RETAINED EARNINGS  
           (\$4313.40)    (\$4313.40)  
 TOTAL RETAINED EARNINGS  
           (\$4313.40)    (\$4313.40)

710      DIRECT SALES  
           \$0.00            \$0.00  
 720      OTHER OPERATING INCOME  
           \$0.00            \$0.00  
 TOTAL REVENUE  
           \$0.00            \$0.00

820      MATERIALS PURCHASED  
           \$325.50            \$325.50  
 840      DIRECT LABOR  
           \$3987.90            \$3987.90  
 TOTAL DIRECT EXPENSES  
           \$4313.40            \$4313.40

910      RENTALS PAID  
           \$0.00            \$0.00  
 TOTAL G. & A. EXPENSE  
           \$0.00            \$0.00

TOTAL ASSETS  
           \$4317.40            \$1107.00

TOTAL LIABILITIES - DEFERRED STOCK  
           \$4313.40            \$0.00

LEDGER3 -- LIST FILE CONTENTS

- SELECT AN OPTION:
- 31 LIST ENTIRE CHART OF ACCOUNTS
  - 32 LIST SELECTED RANGE IN CHART OF ACCOUNTS
  - 33 LIST ENTIRE JOURNAL FILE
  - 34 LIST SELECTED RANGE OF JOURNAL RECORDS
  - 0 RETURN TO MASTER MENU

OPTION? .

# COMPUMAX

select subsidiary Journal file via  
RED/PAY/PER/INV/- entry.THE MICROLE  
DGER SYSTEM

SELECT PROGRAM OPTION:

- 1 CHART OF ACCOUNTS DATA ENTRY/UPDATE
- 2 JOURNAL FILE DATA ENTRY/UPDATE
- 3 FILE LISTINGS
- 4 TRIAL BALANCE AND POSTING
- 5 PROFIT AND LOSS STATEMENT
- 6 BALANCE SHEET
- 7 FILE BACKUP

0 QUIT

SELECT ? :

...Please wait...

LEDGERS — PROFIT & LOSS STATEMENT

Please enter TITLE for this statement  
and START DATE (in form MMDDYY) of  
this fiscal year:

TITLE ? DATE ? (JAN 81,81)

Title and date ok (Y OR N)? Y

OUTPUT TO GO TO PRINTER (Y OR N)? Y

...PLEASE WAIT...

PROFIT AND LOSS STATEMENT —  
 GEMO P&L STATEMENT

PERIOD JAN 01,81 THRU JAN 31,81

REVENUES

TOTAL REVENUES	\$0.00
----------------	--------

EXPENSES

MATERIALS PURCHASES  
 \$325.58

DIRECT LABOR  
 \$3987.90

TOTAL DIRECT EXPENSES	\$4313.48
-----------------------	-----------

TOTAL G.A. EXPENSES	\$0.00
---------------------	--------

TOTAL EXPENSES	\$4313.48
----------------	-----------

INCOME (LOSS)	(\$4313.48)
---------------	-------------

RUN THIS REPORT AGAIN (Y OR N)? N

...please wait...

# COMPUMAX

select subsidiary journal file via  
REC/PAY/PER/INV/- entry.THE MICROLE  
DGER SYSTEM

SELECT PROGRAM OPTION:

- 1 CHART OF ACCOUNTS DATA ENTRY/UPDATE
- 2 JOURNAL FILE DATA ENTRY/UPDATE
- 3 FILE LISTINGS
- 4 TRIAL BALANCE AND POSTING
- 5 PROFIT AND LOSS STATEMENT
- 6 BALANCE SHEET
- 7 FILE BACKUP

0 QUIT

SELECT ? 6

...Please wait...  
LEDGERS -- BALANCE SHEET

Please enter TITLE for this balance sheet:  
t:

TITLE ? DEMO BALANCE SHEET

OUTPUT TO GO TO PRINTER (Y OR N)? Y

...PLEASE WAIT...

BALANCE SHEET --  
DEMO BALANCE SHEET

AS OF JAN 31,81

## CURRENT ASSETS

CASH IN BANK	.
	\$3686.60
CASH ON HAND	
	\$600.00
ACCOUNTS RECEIVABLE	
	\$7100.00
-----	

NON-CURRENT ASSETS

INVESTMENTS

\$21021.00

TOTAL NONCURRENT ASSETS \$21021.00

---

TOTAL ASSETS \$59971.16

---

CURRENT LIABILITIES

NOTES PAYABLE

\$2888.00

U.P.S., ACCT PAYABLE

\$32.00

CA. SALES TAX, PAYABLE

\$234.56

TOTAL CURR. LIABILITIES \$3154.56

LONG-TERM LIABILITIES

LONG TERM DEBT

\$41041.00

TOTAL LONG TERM LIAB'S \$41041.00

OWNER'S EQUITIES

COMMON STOCK

\$51051.00

RETAINED EARNINGS

(\$4313.40)

TOTAL OWNER'S EQUITIES \$46737.60

---

TOTAL LIAB & O E \$59971.16

---

RUN THIS REPORT AGAIN (Y OR N)? N

...Please wait...



select subsidiary Journal file via  
REC/PAY/PER/INJ/- entry.THE MICROLE  
DGER SYSTEM

SELECT PROGRAM OPTION:

- 1 CHART OF ACCOUNTS DATA ENTRY/UPDATE
- 2 JOURNAL FILE DATA ENTRY/UPDATE
- 3 FILE LISTINGS
- 4 TRIAL BALANCE AND POSTING
- 5 PROFIT AND LOSS STATEMENT
- 6 BALANCE SHEET
- 7 FILE BACKUP

0 QUIT

SELECT ? ALTERNATE JOURNAL SELECTED ?

You have selected the Journal file  
produced by MICROREC. All  
references to a Journal file herein  
will refer to 'JUREC.DAT'

Is this correct (Y OR N)? Y

Subsidiary Journal file assumed to  
be on disk drive 2.

Is this correct (Y OR N)? Y  
select subsidiary Journal file via  
REC/PAY/PER/INJ/- entry.THE MICROLE  
DGER SYSTEM

SELECT PROGRAM OPTION:

- 1 CHART OF ACCOUNTS DATA ENTRY/UPDATE
- 2 JOURNAL FILE DATA ENTRY/UPDATE
- 3 FILE LISTINGS
- 4 TRIAL BALANCE AND POSTING
- 5 PROFIT AND LOSS STATEMENT
- 6 BALANCE SHEET
- 7 FILE BACKUP

0 QUIT

SELECT ? 3

...Please wait...

LEDGER3 — LIST FILE CONTENTS

SELECT AN OPTION:

- 31 LIST ENTIRE CHART OF ACCOUNTS
- 32 LIST SELECTED RANGE IN  
CHART OF ACCOUNTS
- 33 LIST ENTIRE JOURNAL FILE
- 34 LIST SELECTED RANGE OF  
JOURNAL RECORDS
- 0 RETURN TO MASTER MENU

OPTION? LIST ALL OF JOURNAL FILE (33)

OUTPUT TO GO TO PRINTER (Y OR N)? Y

...PLEASE WAIT...

# COMPUMAX

JOURNAL FILE LISTING  
 PERIOD JAN 01,81 THRU JAN 07,81

JOURNAL FILE HAS 16 RECORDS

REC	ACCT	TRANSACTION	DATE	AMOUNT	RUNNING BALANCE
001	130	invoice 1985	NOV 05,80	\$218.50	\$218.50
					AR
002	710	invoice 1985	NOV 05,80	\$200.00	\$18.50
					SALES
003	330	invoice 1985	NOV 05,80	\$13.00	\$5.50
					TAX
004	320	invoice 1985	NOV 05,80	\$5.50	\$0.00
					SHIPPING
005	130	invoice 1986	DEC 05,80	\$151.10	\$151.10
					AR
006	710	invoice 1986	DEC 05,80	\$140.00	\$11.10
					SALES
007	330	invoice 1986	DEC 05,80	\$9.10	\$2.00
					TAX
008	320	invoice 1986	DEC 05,80	\$2.00	\$0.00
					SHIPPING
009	130	invoice 1987	JAN 07,81	\$151.10	\$151.10
					AR
010	710	invoice 1987	JAN 07,81	\$140.00	\$11.10
					SALES
011	330	invoice 1987	JAN 07,81	\$9.10	\$2.00
					TAX
012	320	invoice 1987	JAN 07,81	\$2.00	\$0.00
					SHIPPING
013	110	invoice 1985	DEC 10,80	\$175.00	\$175.00
					PMT
014	130	invoice 1985	DEC 10,80	(\$175.00)	\$0.00
					AR
015	110	invoice 1986	JAN 02,81	\$151.10	\$151.10
					PMT
016	130	invoice 1986	JAN 02,81	(\$151.10)	\$0.00
					AR

LEDGERS — LIST FILE CONTENTS  
 select subsidiary journal file via  
 REC/PAY/PER/INJ/- entries. THE MICROLE  
 DGER SYSTEM

- SELECT AN OPTION:
- 31 LIST ENTIRE CHART OF ACCOUNTS
  - 32 LIST SELECTED RANGE IN CHART OF ACCOUNTS
  - 33 LIST ENTIRE JOURNAL FILE
  - 34 LIST SELECTED RANGE OF

# COMPUMAX

SELECT PROGRAM OPTION:

- 1 CHART OF ACCOUNTS DATA ENTRY/UPDATE
- 2 JOURNAL FILE DATA ENTRY/UPDATE
- 3 FILE LISTINGS
- 4 TRIAL BALANCE AND POSTING
- 5 PROFIT AND LOSS STATEMENT
- 6 BALANCE SHEET
- 7 FILE BACKUP
  
- 0 QUIT

SELECT ? :

...please wait...

TRIAL BALANCE AND POSTING PROGRAM

AUDIT TRAIL,  
OUTPUT TO GO TO PRINTER (Y OR N)? Y

...PLEASE WAIT...

TRIAL BALANCE --  
PERIOD JAN 01,81 THRU JAN 07,81

EXPENSES :	\$0.00
REVENUES :	\$480.00
INCOME :	\$480.00
TO ASSETS:	\$520.70
TO LIAB. :	\$40.70
TO R.E. :	\$480.00

ASSETS BALANCE LIABILITIES  
+ OWNER'S EQUITY  
ASSETS BALANCE LIABILITIES  
+ OWNER'S EQUITY

DO YOU WANT TO POST (Y OR N)? Y

ARE YOU SURE (Y OR N)? Y

AUDIT TRAIL OF POSTED TRANSACTIONS

ACCT	REC	TRANSACTION	DATE	AMOUNT
110	013	invoice 1985		, PMT
		DEC 10,80		\$175.00
110	015	invoice 1985		, PMT
		JAN 02,81		\$151.10
130	001	invoice 1985		, AR
		NOV 05,80		\$218.50
130	005	invoice 1985		, AR
		DEC 06,80		\$151.10
130	009	invoice 1987		, AR
		JAN 07,81		\$151.10
130	014	invoice 1985		, AR
		DEC 10,80		(\$175.00)
130	016	invoice 1985		, AR
		JAN 02,81		(\$151.10)
320	004	invoice 1985		, SHIPPING
		NOV 05,80		\$5.50
320	008	invoice 1985		, SHIPPING
		DEC 06,80		\$2.00
320	012	invoice 1987		, SHIPPING
		JAN 07,81		\$2.00
330	003	invoice 1985		, TAX
		NOV 05,80		\$13.00
330	007	invoice 1985		, TAX
		DEC 05,80		\$9.10
330	011	invoice 1987		, TAX
		JAN 07,81		\$9.10
710	002	invoice 1985		, SALES
		NOV 05,80		\$200.00
710	006	invoice 1985		, SALES
		DEC 06,80		\$140.00
710	010	invoice 1987		, SALES
		JAN 07,81		\$140.00

POSTING COMPLETE

...Please wait...  
 select subsidiary Journal file via  
 REC/PAY/PER/INV/- entry.THE MICROLE  
 DGER SYSTEM

# COMPUTER

SELECT PROGRAM OPTION:

- 1 CHART OF ACCOUNTS DATA ENTRY/UPDATE
- 2 JOURNAL FILE DATA ENTRY/UPDATE
- 3 FILE LISTINGS
- 4 TRIAL BALANCE AND POSTING
- 5 PROFIT AND LOSS STATEMENT
- 6 BALANCE SHEET
- 7 FILE BACKUP

0 QUIT

SELECT ?

DATA FIELDS USED IN CHART OF ACCOUNTS FILE 'CHAFIL'

## Header Record

Unused	NUMBER OF ACCOUNTS	DATE of last update (MMDDYY)
<i>33 bytes alpha</i>	<i>6 bytes num</i>	<i>6 bytes num</i>

## Detail Records

ACC'T NUMBER (101 - 999)	ACC'T NAME (max.30 chars.)	CURRENT AMOUNT	YEAR-TO-DATE AMOUNT
<i>3 bytes alpha</i>	<i>30 bytes alpha</i>	<i>6 bytes num</i>	<i>6 bytes num</i>

DATA FIELDS USED IN JOURNAL FILE 'JOUFIL'

## Header Record

Unused	START DATE for period (MMDDYY)	NUMBER OF RECORDS	END DATE for period (MMDDYY)
<i>27 bytes alpha</i>	<i>6 bytes num</i>	<i>6 bytes num</i>	<i>6 bytes num</i>

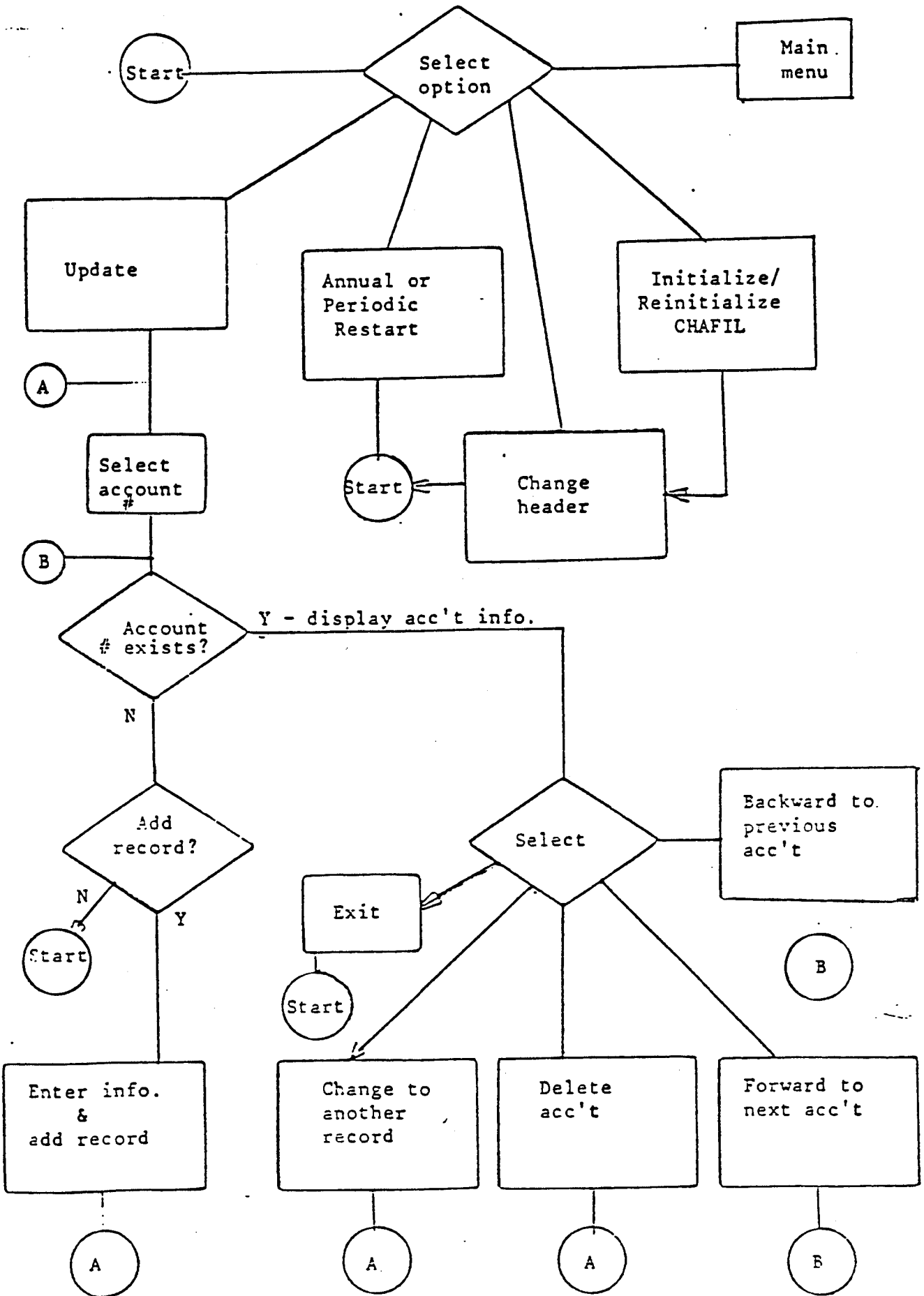
## Detail Records

ACC'T NUMBER (101-999)	DESCRIPTION (max.30 chars.)	DATE (MMDDYY)	AMOUNT
<i>3 bytes alpha</i>	<i>30 bytes alpha</i>	<i>6 bytes num</i>	<i>6 bytes num</i>

## APPENDIX B

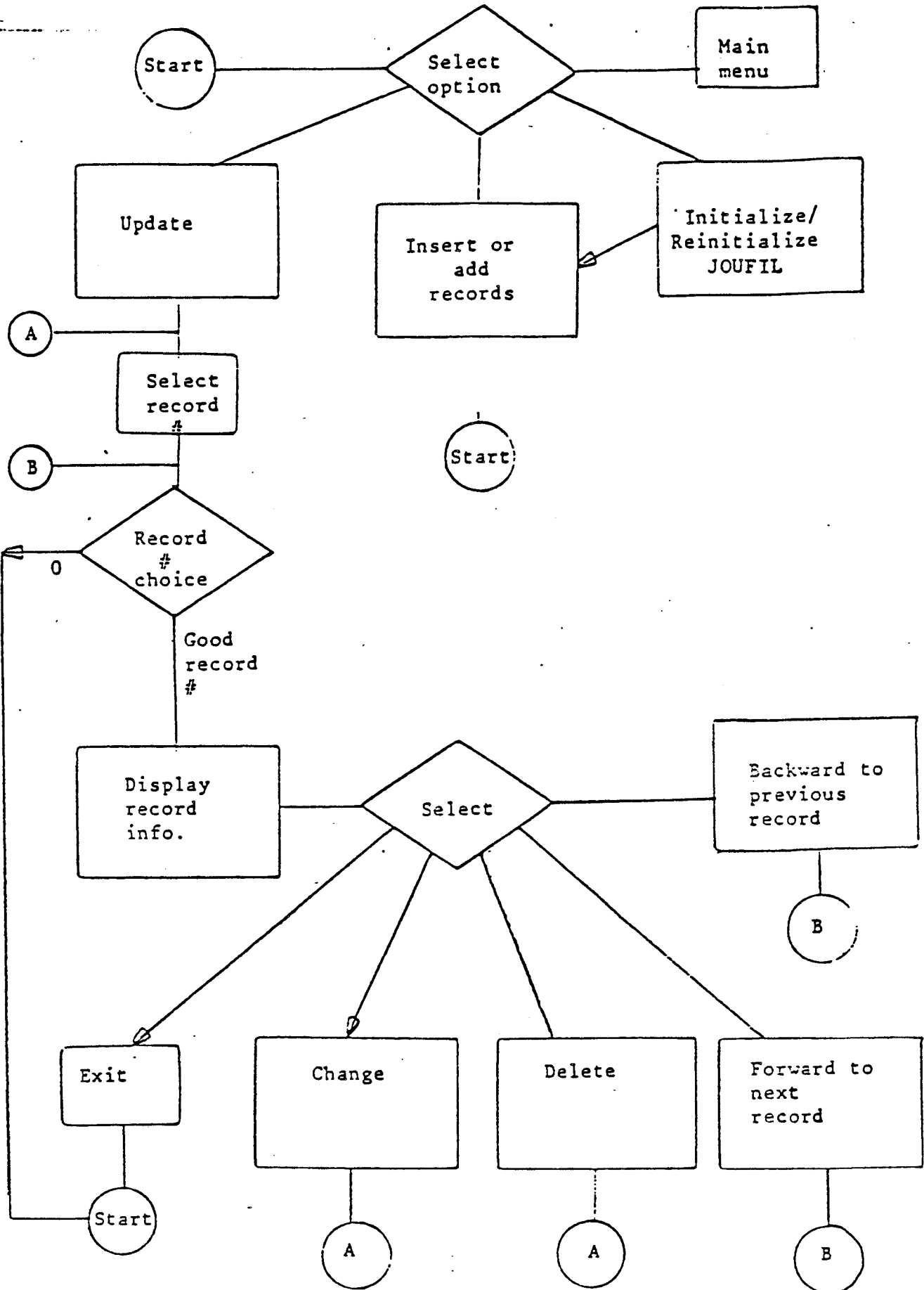
RECORD STRUCTURES AND FLOWCHARTS

CHART OF ACCOUNTS FILE MANAGEMENT

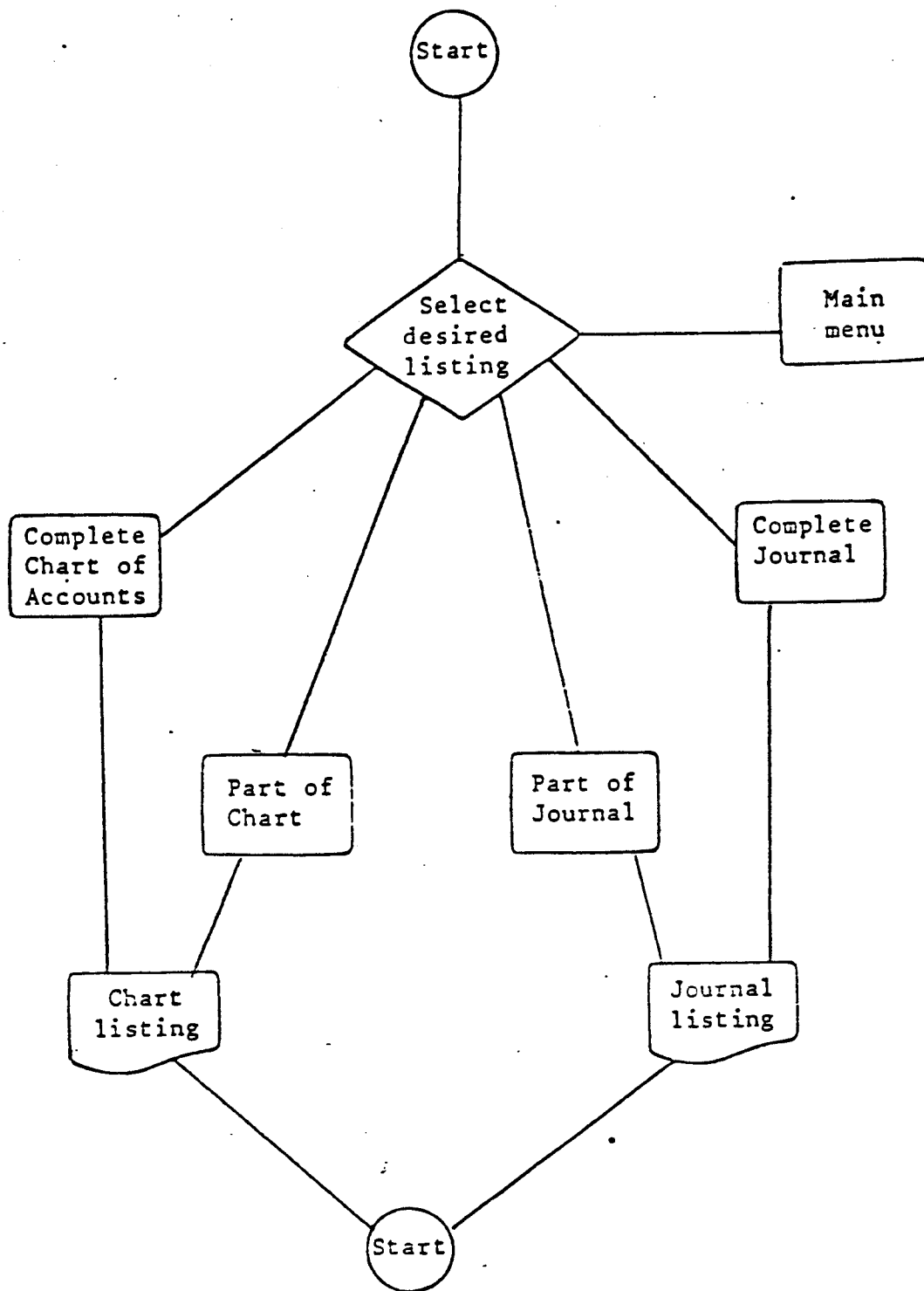




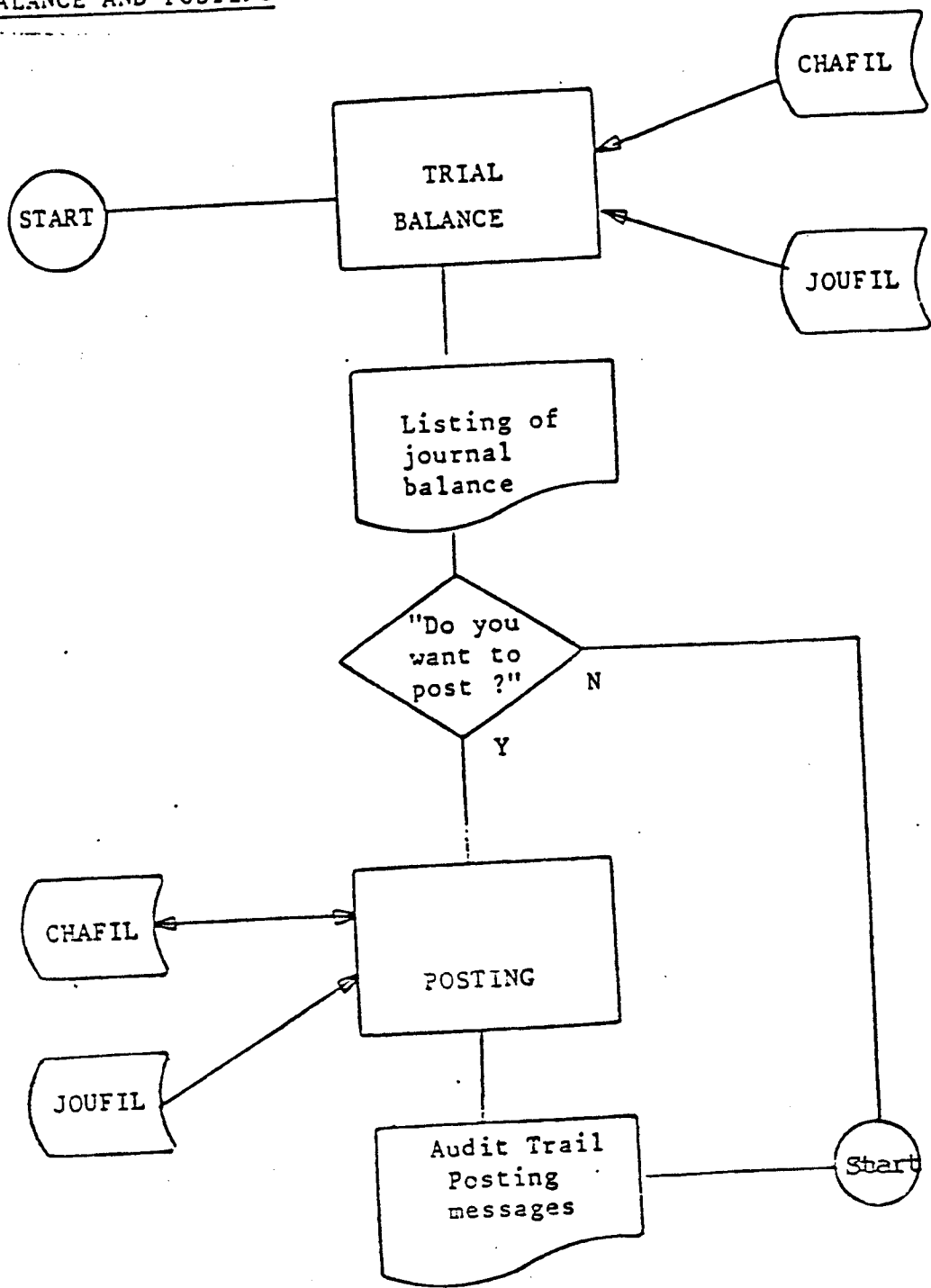
JOURNAL FILE MANAGEMENT



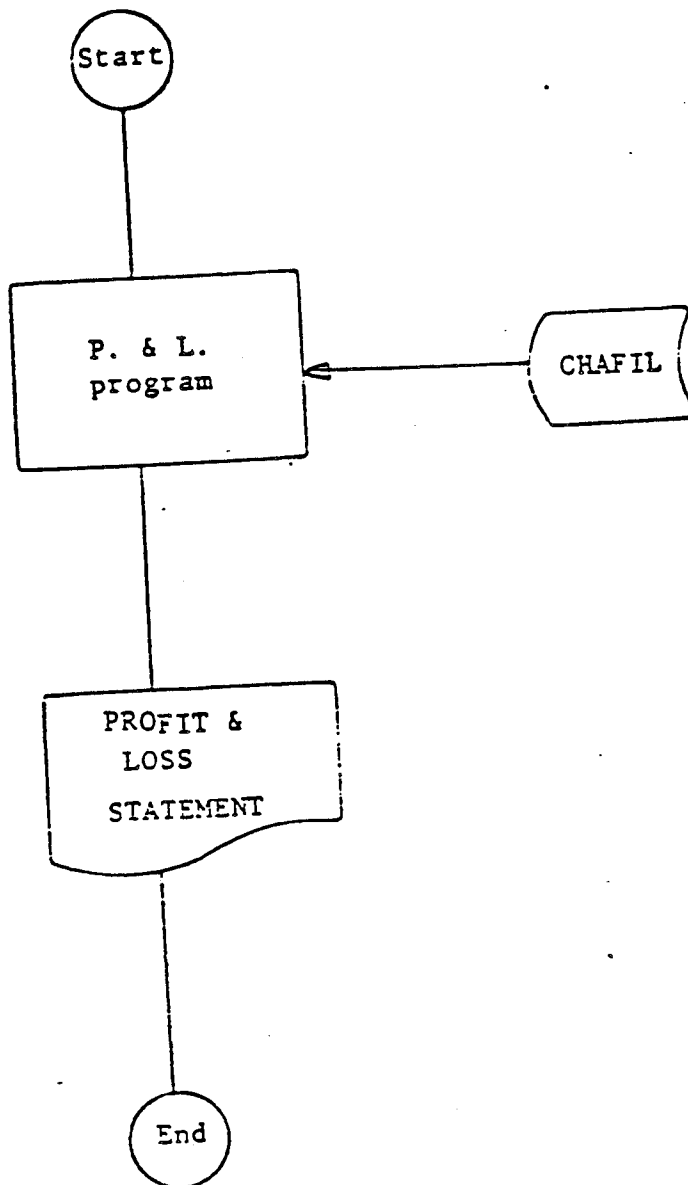
FILE LISTING



TRIAL BALANCE AND POSTING

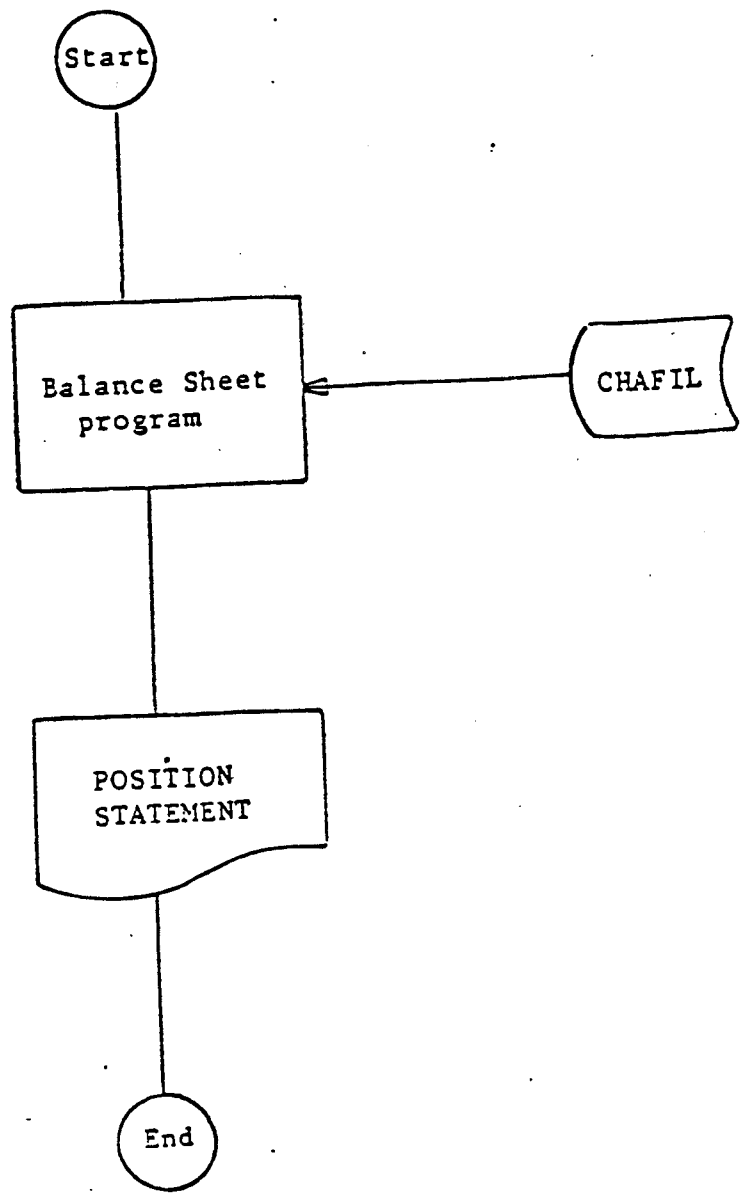


PROFIT & LOSS PROGRAM

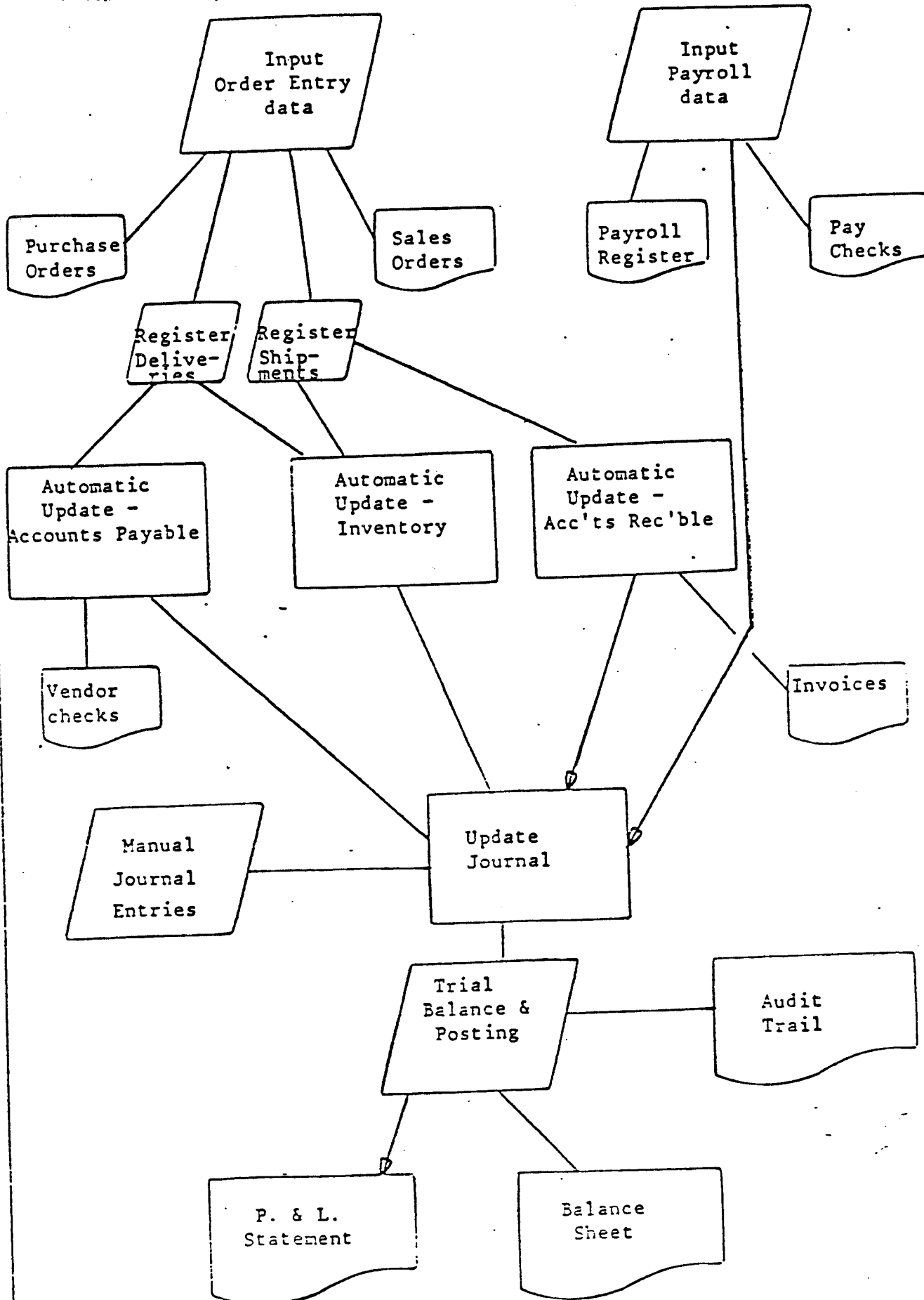


1 2 3 4 5 6 7 8 9 10 11 12 13 14 15 16 17 18 19 20 21 22 23 24 25 26 27 28 29 30 31 32 33 34 35 36 37 38 39 40 41 42 43 44 45 46 47 48 49 50 51 52 53 54 55 56 57 58 59 60 61 62 63 64 65 66 67 68 69 70 71 72 73 74 75 76 77 78 79 80 81 82 83 84 85 86 87 88 89 90 91 92 93 94 95 96 97 98 99 100

BALANCE SHEET PROGRAM



OVERVIEW OF RELATIONSHIP BETWEEN MICROLEDGER, MICROPAY, MICROREC, MICROINV, MICROPERS AND ORDER ENTRY SOFTWARE PACKAGES.



X C -- PROGRAM LISTINGS

Menu Program  
COPYRIGHT (C) 1989, COMPUSSX  
UNDER PROTECTION OF CALIFORNIA  
OR RESALE WITHOUT WRITTEN  
PALO ALTO, CALIFORNIA, USA,  
#1,4,0,"K:"

ASSOCIATES, INC.  
TRADE SECRET LAW. DO NOT COPY,  
AGREEMENT WITH COMPUSSX ASSOCIATES,  
94301 [ PHONE 415-321-2981 ]

RENAME, CHANGE, CONVERT OR EXPAND  
467 HAMILTON AVE.

```

C=300
) 1000
(Y OR N)? ";
#1,QYN
QYN=89 OR QYN=121 THEN ? "Y":QYN=1:RETURN
QYN=78 OR QYN=110 THEN ? "N":QYN=0:RETURN
";";GOTO 803
EM LEDGER ITSELF
GRAPHICS ZERO
GOSUB 9000:REM SET UP FOR ENTRY I/O
DIR F$(15)
DIR TEMP$(20)
GRAPHICS ZERO:REM THE MAIN MENU
POSITION 2,22:?"select subsidiary journal file via"? " REC/PAY/PER/INV/- entry.";
TRAP 2000:POSITION 2,0
? "THE MICROLEDGER SYSTEM"? :? :? "SELECT PROGRAM OPTION:"?
? "1 CHART OF ACCOUNTS DATA ENTRY/UPDATE"
? "2 JOURNAL FILE DATA ENTRY/UPDATE"
? "3 FILE LISTINGS"
? "4 TRIAL BALANCE AND POSTING"
? "5 PROFIT AND LOSS STATEMENT"
? "6 BALANCE SHEET"
? "7 FILE BACKUP"
? :? "0 QUIT"
? :? :? "SELECT ";:INPUT TEMP$
102 IF TEMP$="REC" OR TEMP$="PAY" OR TEMP$="INV" OR TEMP$="PER" THEN 8000
103 IF TEMP$="-" THEN 2500
1104 OPT=VAL(TEMP$):IF OPT=-467 THEN GOSUB 9900:RUN
2110 IF OPT THEN 2200
2120 GRAPHICS 18:PRINT #6:PRINT #6:"thank you for using"
2130 PRINT #6:PRINT #6:PRINT #6;" MICROLEDGER"
2140 PRINT #6:PRINT #6:PRINT #6;" by"
2150 PRINT #6;" C O M P U T E R X"
2160 POKE 764,255
2170 IF PEEK(764)=255 THEN 2170
2180 NEW
2200 REM GOT AN OPT
2210 IF OPT<INT(OPT) OR OPT<1 OR OPT>7 THEN 2000
2220 TRAP 2500
2240 F$="0:LEDGER?.SAV"
2250 F$(9,9)=CHR$(OPT+48)
2300 REM FILENAME READY
2310 OPEN #5,4,0,F$:CLOSE #5
2320 GRAPHICS 2
2330 PRINT #6:PRINT #6:PRINT #6;" MICROLEDGER"
2340 PRINT #6:PRINT #6:PRINT #6;" by"
2350 PRINT #6;" C O M P U T E R X"
2360 ? :? :? :? :? " ...please wait..."

```

# COMPUTER

```

2345-TRAP 40000
2370 RUN F$
2380 STOP
2500 REM DOOFSSSY
2510 GRAPHICS 0:?:? :? :? " ERROR: REQUESTED PROGRAM NOT ON DISK ":? :?
2520 ? " "F$(3);""
2540 ? "IS ON DISK DRIVE 1 !!!"
2550 ? :? :?
2560 ? " TYPE 'RUN' WHEN ALL IS READY "
2570 ? :? :? :END
8000 REM REQUEST FOR ALTERNATE JOURNAL .
8010 GRAPHICS ZERO:?" ALTERNATE JOURNAL SELECTED ":? :? :?
8020 ? "You have selected the journal file":? " produced by MICRO";TEMP$;". All"
8030 ? " references to a journal file herein":? " will refer to 'JOU";TEMP$;".DAT"
8040 ? :? "Is this correct ";:GOSUB YESNO:IF QYN=NO THEN 8500
8050 ? :? "Subsidiary journal file assumed to":? " be on disk drive 2."
8070 ? :? "Is this correct ";:GOSUB YESNO:IF QYN THEN 8090
8080 ? :? "OK, disk drive 1 assumed.":FOXE 17E3,ASC("1"):GOTO 8100
8090 POKE 17E3,ASC("2")
8100 REM
8210 FOR I=1 TO 3:FOXE 1779+I,ASC(TEMP$(I)):NEXT I
8220 RUN
8500 GRAPHICS ZERO:?" MAIN JOURNAL FILE (RE)SELECTED ":? :?
8505 FOR I=1 TO 4:FOXE 1779+I,0:NEXT I
8510 ? "Any subsidiary journal file usage ":? " has been reset. If you desire to"
8520 ? " use a subsidiary journal file,":? " enter its 3-letter name in response"
8530 ? " to the 'SELECT?' prompt.":? :? :? "Continue ";:GOSUB YESNO:IF QYN THEN RUN
8540 GOTO 8500
9000 REM SET UP USR FOR EGET AND EPUT
9010 ADDR=1464:RESTORE 9100
9020 READ MEM:IF MEM=0 THEN FOXE ADDR,MEM:ADDR=ADDR+1:GOTO 9020
9030 RETURN
9100 DATA 160,7,268,2,160,11,104,201,3,208,46,104,104,41,7,10,10,10,10,170,104
9120 DATA 157,69,3,104,157,68,3,104,157,73,3,104,157,72,3,152,157,66,3,138,72
9130 DATA 32,86,228,104,170,189,67,3,133,212,149,0,123,213,96,170,262,46,5,104,104
9140 DATA 76,186,6,149,255,133,212,133,213,96,0,-1
9500 REM TURN ON PRINTER TO ECHO E:
9510 FOXE 829,247:FOXE 829,6
9520 RESTORE 9930:ADDR=1784
9530 READ MEM:IF MEM=0 THEN FOXE ADDR,MEM:ADDR=ADDR+1:GOTO 9530
9540 RETURN
9930 DATA 72,32,164,246,104,76,167,238,-1

```



# COMPUFAX

LCCMON

This subroutine is used in all programs as line numbers 100-999

```

100 REM COPYRIGHT (C) 1980, COMPUFAX ASSOCIATES, INC.
110 REM LAKER PROTECTION OF CALIFORNIA TRACE SECRET LAW. DO NOT COPY,
120 REM FOR RESALE WITHOUT WRITTEN AGREEMENT WITH COMPUFAX ASSOCIATES,
130 REM PALO ALTO, CALIFORNIA, USA, 94301 [ PAGE 415-321-2891 ]
140 REM STUFF COMMON TO LEDGER FGS
150 LET ONE=1:ZERO=0:YES=ONE:NO=ZERO
160 LET IE7=10000000:REM IE7 IS USED A BUNCH
170 DIM BLANKS(50):FOR I=ONE TO 50:BLANKS(I)=" ":NEXT I
180 DIM QY$(1):UNTRAF=40000
190 DIM FMT$(15),F2$(15)
200 DIM MONTHS(40):MONTHS="??JANFEBMARAPRMAJUNJULAUUGSEPOCTNOVDEC?"
210 REM FILENAMES
220 DIM CFN$(15),CXFN$(15),JFN$(15),JXFN$(15)
230 CFN$="D1:CAFIL.DAT":CXFN$="D1:CAFIL.MDX"
240 JFN$="D2:JOFIL.DAT":JXFN$="D2:JOFIL.MDX"
250 IF FEEK(1760)<64 THEN 290
260 FOR QT=0 TO 2:JFN$(QT+7,QT+7)=CFN$(FEEK(QT+1760)):NEXT QT:JXFN$(7,9)=JFN$(7,9)
270 IF FEEK(1763) THEN JFN$(2,2)=CFN$(FEEK(1763)):JXFN$(2,2)=JFN$(2,2)
280 OPEN #ONE,4,ZERO,"K:"
290 REM REEDED FOR C/A FILE
300 DIM CACCTS(3),COECS(30),COUR(ZERO),CYTD(ZERO)
310 CADR=ADR(CACCTS):LEN=45
320 REM REEDED FOR JOURNAL FILE
330 DIM JACCTS(3),JDESCS(30),JDATE(ZERO),JMT(ZERO),JDATE2(ZERO)
340 REM HEADER STARTS AT JDESCS(4)
350 JADR=ADR(JACCTS):JLEN=45
360 REM C/A AND JOURNAL INDICES
370 CMAX=200:JMAX=400
380 DIM CJ$(ONE),CIX(CMAX),JIX(JMAX)
390 CXLEN=6*(CMAX+ONE):JXLEN=6*(JMAX+ONE)
400 CXADR=ADR(CJ$)+ONE:JXADR=CXADR+CXLEN
410 GOTO 900
420 END :REM DON'T RUN PAST HERE!!!
430 REM EGET AND EPUT ROUTINES
440 REM E: are parms and te-ns
450 QT=USR(1668,QF,QA,QL):IF QT=ONE OR QT=3 THEN RETURN
460 ? " ERROR ON EPUT, ";QT:STOP
470 QT=USR(1664,QF,QA,QL):IF QT=ONE OR QT=3 THEN RETURN
480 ? " ERROR ON EGET, ";QT:STOP
490 REM GET AND PUT INDEXED RECORD
500 QI=QI-IE7*(INT(QI/IE7)):QT=INT(QI/1000):QI=QI-1000*QT:POINT #QF,QT,QI:GOTO EPUT
510 QI=QI-IE7*(INT(QI/IE7)):QT=INT(QI/1000):QI=QI-1000*QT:POINT #QF,QT,QI:GOTO EGET
520 REM GET AND PUT INDEXED C/A RECS
530 CACCTS=BLANKS:COECS=BLANKS:QA=CAADR:QL=LEN:QF=2:GOTO IGET
540 QA=CAADR:QL=LEN:QF=2:GOTO IFUT
550 QA=JADR:QL=JLEN:QF=3:GOTO IFUT
560 JACCTS=BLANKS:JDESCS=BLANKS:QA=JADR:QL=JLEN:QF=3:GOTO IGET
570 REM READ IN INDEX FILES
580 QF=4:OPEN #QF,4,ZERO,CXFN$:QA=CXADR:QL=CXLEN:GOSUB EGET:CLOSE #QF:RETURN
590 QF=4:OPEN #QF,4,ZERO,JXFN$:QA=JXADR:QL=JXLEN:GOSUB EGET:REM GET FIRST INDEX OF JX

```

# COMPUMAX

```

722 QT=INT(JIX(ZERO)/IE7):IF QT>JMAX THEN ? " ERROR: JMAX TOO SMALL, ";JXFN$:STOP
724 IF QT THEN JMAX=QT:JXLEN=6*(JMAX+ONE)
725 QA=JXADR+6:QL=JXLEN-6:GOSUB EGET:CLOSE #QF:RETURN
730 QF=4:OPEN #QF,8,ZERO,CXFN$:QA=CXADR:QL=CXLEN:GOSUB EPUT:CLOSE #QF:RETURN
740 QF=4:OPEN #QF,8,ZERO,JXFN$:QA=JXADR:QL=JXLEN:GOSUB EPUT:CLOSE #QF:RETURN
775 REM BACK TO MAMA
777 GRAPHICS 2:PRINT #6:PRINT #6:PRINT #6;" MICROLEDGER":PRINT #6:PRINT #6
778 PRINT #6;" by":PRINT #6;" C O M P U M A X"
779 ? :? :? :? " ...please wait..."
781 TRAP 783:RUN "D1:LEDGER"
785 ? CHR$(253);"put disk with 'LEDGER' in D1, please":? :? "Have you done so ";GOSUB YESNO:IF BYN=YES THEN 775
785 GOTO 783
800 REM YESNO
802 PRINT "(Y OR N)? ";
804 GET #ONE,QYN
806 IF QYN=89 OR QYN=121 THEN ? "Y":QYN=YES:RETURN
808 IF QYN=78 OR QYN=110 THEN ? "N":QYN=NO:RETURN
810 ? CHR$(253);:GOTO 804
825 REM PDATE
826 IF QD>122200 OR QD<10000 THEN FMT$="READ DATE?":RETURN
827 QT=INT(QD/10000):QE=(QD-10000*QT)/100:FMT$=MONTH$(QT+QT+QT,QT+QT+QT+2):FMT$(4)=" ??,??"
829 F2$=STR$(100+QD):FMT$(5,6)=F2$(2,3):FMT$(8)=STR$(100*(QD-INT(QD)))
832 RETURN
850 REM PRETTY PRINT
852 IF ABS(QN)>=IE7 THEN FMT$=STR$(QN):RETURN
854 QT=INT(ABS(QN)*100+0.5):F2$="":IF QN<0 THEN F2$="("
856 F2$(LEN(F2$)+ONE)=STR$(INT(QT/100)):F2$(LEN(F2$)+ONE)=",":QT=QT-100*INT(QT/100)
858 FMT$=STR$(100+QT):F2$(LEN(F2$)+ONE)=FMT$(2,3):F2$(LEN(F2$)+1)=" " :IF QN<0 THEN F2$(LEN(F2$))=")"
860 FMT$=BLANK$:FMT$(14-LEN(F2$))=F2$:RETURN
875 REM ASK FOR AND OPEN PRINT FILE
880 PRFLAG=ZERO:TEXT$="E":? :? "OUTPUT TO GO TO PRINTER ";GOSUB YESNO
885 IF QYN=YES THEN TEXT$="F":PRFLAG=ONE
890 OPEN #PR,B,0,TEXT$:RETURN
900 REM SUBROUTINES ARE GIVEN NAMES
905 EGET=520:EPUT=510
910 LET READCX=710:LET READJX=720
920 LET WRITDCX=730:LET WRITEJX=740
930 IGET=620:IFUT=610:CIGET=660:CIFUT=670:JIGET=690:JIFUT=680
935 PDATE=825:YESNO=800:PRETTY=850
940 PRQUERY=875:PR=5:LET GOHOME=775
997 IF PEEK(1664)<160 THEN GOTO GOBACK
999 REM BEGIN LEDGER

```

# COMPUMAN

```

1000 REM *****
1001 REM *
1002 REM * LEDGER1 -- CHART OF ACCTS
1003 REM *
1004 REM *****
1010 REM MAINTENANCE
1020 DIM TEMP$(31)
1100 GRAPHICS ZERO:PRINT "LEDGER1 -- MAINTAIN CHART OF ACCOUNTS":? :?
1110 PRINT "SELECT AN OPTION:"
1120 ? " 11 UPDATE CHART OF ACCOUNTS FILE"
1130 ? " 12 CHANGE FILE HEADER INFORMATION"
1140 ? " 13 DO PERIODIC RESTART"
1150 ? " 14 DO ANNUAL RESTART"
1160 ? " 15 INITIALIZE OR REINITIALIZE          CHART OF ACCOUNTS FILE"
1190 ? " 0 RETURN TO MASTER MENU"
1199 TRAP 1100
1200 ? :? "OPTION":;INPUT OPT
1201 TRAP UNTRAP
1210 IF OPT=ZERO THEN GOTO GOMOVE
1220 IF OPT<11 OR OPT>15 OR OPT<>INT(OPT) THEN 1100
1230 IF OPT>=15 THEN 1490
1299 REM SETUP COFA FILE GOODIES
1400 OPEN #2,12,0,CFN%
1410 GOSUB READCX
1420 QI=CIX(0):GOSUB CIGET:CCNT=CCUR(ZERO):CDATE=CYTD(ZERO)
1450 GOSUB 1000*(OPT-9):RUN
1460 REM CLOSE CFA FILES AFTER UPDATING REDDAD 0
1481 REM A NORMAL EXIT FROM 2000+ SUKS
1490 QI=CIX(ZERO):GOSUB CIGET:CCUR(ZERO)=CCNT:QI=CIX(0):GOSUB CIPUT
1490 GOSUB WRITCX:CLOSE #2:RETURN
2000 REM UPDATE C OF A
2005 GRAPHICS ZERO
2010 ? "UPDATE CHART OF ACCOUNTS FILE":? :? "ADD/INSERT/DELETE/CHANGE ACCOUNTS":?
2020 TRAP 2900:PRINT "WHAT ACCOUNT NUMBER":;INPUT QAC
2030 TRAP UNTRAP:IF QAC<>INT(QAC) THEN 2900
2035 IF QAC=ZERO THEN 1400
2040 IF QAC=600 THEN 2100
2050 IF QAC<101 OR QAC>999 OR QAC=(100*INT(QAC/100)) THEN 2900
2100 REM QAC HAS ACCT NUMBER
2105 GRAPHICS ZERO:PRINT "SEARCHING...":? :?
2110 J=QAC/10
2115 I=ONE:IF CCNT=ZERO THEN 2200
2120 FOR I=ONE TO CCNT+ONE:IF CIX(I)=J THEN 2160
2130 NEXT I:I=I-ONE:GOTO 2200
2140 IF INT(CIX(I)/10)=QAC THEN 2400
2200 REM NOT FOUND
2210 ? "ACCT NUMBER ";QAC;" NOT IN FILE"
2220 ? :? "WANT TO ADD NEW ACCT ";:QYN=YES:GOSUB YESNO:IF QYN=NO THEN 2000
2225 IF CCNT=CMAX THEN ? " FILE FULL ":? :GOTO 2220
2230 GRAPHICS ZERO:?" ADDING NEW ACCOUNT NUMBER TO FILE":? :CACCTS=STR$(QAC):? "ACCT NUMBER ";CACCTS:?
2240 TRAP 2230:?" ENTER":? "DESCRIPTION":;INPUT TEMP$:IF LEN(TEMP$)=0 THEN GRAPHICS ZERO:GOTO 2200
2243 IF LEN(TEMP$)>30 THEN PRINT "DESCRIPTION TOO LONG.":GOTO 2240

```

# COMPUMAX

```

2245 CDESC$=BLANK$:CDESC$=TEXT$
2250 PRINT "CURRENT AMT";:INPUT QT:CLR(ZERO)=QT
2260 PRINT "Y.T.D. AMT";:INPUT QT:CYTD(ZERO)=QT
2270 REM VALID ENTRY...ADD IT IN
2280 QI=CIX(CMAX):FOR K=CMAX TO I STEP (-ONE):CIX(K)=CIX(K-ONE):NEXT K:CIX(I)=QI+IE7*QAC
2290 GOSUB CIPUT:CCNT=CCNT+1:GOTO 2000
2400 REM FOUND
2405 QI=CIX(I):GOSUB CIGET:QAC=VAL(CACCT$)
2410 GRAPHICS ZERO:? "ACCT NUMBER ";QAC;" FOUND"?
2420 GOSUB ZSSO
2460 ? :? :? :? "SELECT AN OPTION:"
2465 ? " E-Exit"
2470 ? " D-Delete this account"
2475 ? " C-Change this account"
2480 ? " F-go Forward to next account"
2490 ? " B-go Backward to previous account"
2500 ? "SELECT? ";
2505 GET #ONE,OPT
2510 IF OPT<65 OR OPT>70 THEN PRINT CHR$(253);:GOTO 2505
2520 ? CHR$(OPT):ON OPT-65 GOTO 2850,2700,2600,2000,2900
2530 STOP
2540 REM :REM SYSTEM ZAPPED IF GOT HERE
2549 REM SLEP JUST TO PRINT ACCT INFO
2550 ? "ACCT NUMBER: ";CACCT$
2560 ? "DESCRIPTION: ";CDESC$
2570 QN=CLR(ZERO):GOSUB FPRETTY:? "CURRENT AMT: ";FMT$
2580 QN=CYTD(ZERO):GOSUB FPRETTY:? "Y.T.D. AMT: ";FMT$
2590 RETURN
2600 REM DELETE
2610 ? :? " CAUTION "
2620 ? "DELETE ACCT NUMBER ";QAC;" ";:GOSUB YESNO:IF QYN=NO THEN 2000
2650 QI=CIX(I):FOR QT=I TO CMAX-ONE:CIX(QT)=CIX(QT+ONE):NEXT QT
2660 CIX(CMAX)=QI-(IE7*INT(QI/IE7))
2670 CACCT$(ONE,ONE)=CHR$(128+ASC(CACCT$)):GOSUB CIPUT
2680 CCNT=CCNT-1:GOTO 2000
2700 REM CHANGE
2710 GRAPHICS ZERO:? "CHANGING ACCT NUMBER ";QAC:?:GOSUB ZSSO:??
2720 ? "Enter new information.":? " For no change, hit just RETURN.":?
2730 TRAP 2700:? "DESCRIPTION"::INPUT TEXT$:IF LEN(TEXT$)=ZERO THEN 2750
2740 IF LEN(TEXT$)>30 THEN ? "DESCRIPTION TOO LONG":GOTO 2730
2745 CDESC$=BLANK$:CDESC$=TEXT$
2750 ? "CURRENT AMT"::INPUT TEXT$:IF LEN(TEXT$)<ZERO THEN CLR(ZERO)=VAL(TEXT$)
2770 ? "Y.T.D. AMT"::INPUT TEXT$:IF LEN(TEXT$)<ZERO THEN CYTD(ZERO)=VAL(TEXT$)
2780 QI=CIX(I):GOSUB CIPUT:GOTO 2000
2800 REM VIEW NEXT
2810 I=I+1:IF I>CCNT THEN 2000
2820 GOTO 2400
2850 REM VIEW PREVIOUS
2860 I=I-1:IF I<ONE THEN 2000
2870 GOTO 2400
2900 GRAPHICS ZERO:? "ACCT NUMBERS MUST FOLLOW THESE RULES":?

```

# COMPUMAN

```

2720 ? "101-199 CURRENT ASSETS"
2720 ? "201-299 NON-CURRENT ASSETS"
2725 ? "301-399 CURRENT LIABILITIES"
2730 ? "401-499 NON-CURRENT LIABILITIES"
2735 ? "501-599 OWNERS EQUITIES"
2740 ? "600 MUST BE RETAINED EARNINGS"
2745 ? "701-799 REVENUE ACCOUNTS"
2750 ? "801-899 DIRECT EXPENSE ACCOUNTS"
2755 ? "901-999 FOR G.A. EXPENSE ACCOUNTS"
2760 ? :? " 0 TO EXIT"
2790 ? :? :? :GOTO 2020
3000 REM ***** CHANGE HEADER *****
3010 GRAPHICS ZERO:? "CHANGE HEADER INFORMATION—":? " CHART OF ACCOUNTS FILE":? :?
3020 IF CACCT$(1,1)=" " THEN ? " NEW HEADER ":CACCT$="000":GOTO 3100
3030 ? "CURRENT HEADER":? :? "FILE TITLE: ";CDESC$:? "FILE DATE: ";QD=CDATE:GOSUB FDATE:? FMT$
3100 ? :? "THERE ARE ";CNT;" ACCOUNTS IN THE FILE.":? :?
3110 ? "Enter new information.":? " For no change, hit just RETURN.":?
3120 TRAP 3000:? "TITLE ";:INPUT TEF$;IF LEN(TEF$) THEN CDESC$=BLANK$:CDESC$=TEF$
3130 ? "DATE ";:INPUT TEF$;IF LEN(TEF$)=0 THEN 3160
3135 QD=VAL(TEF$);IF QD<10000 THEN ? CHR$(253);:GOTO 3130
3140 TRAP UNTRAP:CYTD(ZERO)=QD:GOSUB FDATE:? " (";FMT$;)"
3150 FOR QT=1 TO ZEO:NEXT QT
3160 QI=CIX(0):GOSUB CIPUT:CLOSE #2
3190 RETURN
4000 REM ***** PERIODIC RESTART *****
4010 GRAPHICS ZERO:? "PERIODIC RESTART":AFLAG=0:GOTO 5020
5000 REM ***** ANNUAL RESTART *****
5010 GRAPHICS ZERO:? "ANNUAL RESTART":AFLAG=1
5020 ? :? :? "Are you SURE you want to RESTART"
5030 ? " the CHART OF ACCOUNTS file?":? :? :? "Are you SURE ";:GOSUB YESNO:IF QYN=#0 THEN CLOSE #2:RETURN
5040 IF CNT=0 THEN PRINT "NO ACCOUNTS IN FILE!":FOR I=1 TO ZEO:NEXT I:CLOSE #2:RETURN
5060 TRAP 5060:? :? "ENTER DATE (MMDDYY) ";:INPUT CDATE:IF CDATE<10000 THEN ? CHR$(253);:GOTO 5060
5070 TRAP UNTRAP:QD=CDATE:GOSUB FDATE:PRINT " ";FMT$;:? :?
5100 REM ACTUAL RESTART
5110 FOR I=1 TO CNT:QI=CIX(I):QAC=INT(QI/TEF):GOSUB CIGET
5120 IF AFLAG AND (QAC>700) THEN CYTD(ZERO)=ZERO
5130 CQR(ZERO)=ZERO:QI=CIX(I):GOSUB CIPUT:NEXT I
5140 ? :? :? "ALL CURRENT VALUES";:IF AFLAG THEN PRINT ", REVENUES,":? " AND EXPENSES";
5150 PRINT " WERE REINITIALIZED.":GOTO 1600
6000 REM INIT
6010 GRAPHICS ZERO:? "(RE)INITIALIZE CHART OF ACCOUNTS FILE":? :?
6020 PRINT " CAUTION: this option is normally run only to start new ledger systems"
6100 REM ACTUAL INIT
6110 TRAP UNTRAP
6115 ? :? :? "are you SURE about this ";:GOSUB YESNO:IF QYN=#0 THEN RETURN
6120 QA=QADR:QL=QLEN:QF=2
6130 QFEN #QF,3,ZERO,QFNS:CACCT$=BLANK$:CDESC$=BLANK$:CQR(ZERO)=ZERO:CYTD(ZERO)=ZERO
6135 ? :? :? "...please wait..."
6140 FOR I=0 TO CHAX:NOTE #QF,QS,QT:CIX(I)=QS*1000+QT:GOSUB CIPUT:NEXT I
6150 CLOSE #QF:GOSUB WTECKX
6190 CPT=12:GOTO 1400:REM FORCE INIT

```

```

1000 REM *****
1001 REM *
1002 REM * LEDGER 2, JOU FILE MAINT.
1003 REM *
1004 REM *****
1005 DIM TEMP$(31)
1040 GUIT=1500
1200 GRAPHICS ZERO:?"LEDGER2 -- MAINTAIN JOURNAL FILE":? :?
1210 PRINT "SELECT AN OPTION:"
1220 ? " 21 ADD OR INSERT NEW JOURNAL RECORDS"
1230 ? " 22 UPDATE EXISTING JOURNAL RECORDS"
1240 ? " 23 CHANGE FILE HEADER INFORMATION"
1250 ? " 24 INITIALIZE OR REINITIALIZE"
1260 ? "      JOURNAL FILE"
1290 ? :? " 0 EXIT"
1300 TRAP 1200:?"OPTION";:INPUT OPT:TRAP UNTRAP
1310 IF OPT=ZERO THEN GOTO 50000
1320 IF OPT<21 OR OPT>24 OR OPT<>INT(OPT) THEN 1200
1330 ? :? :? "...PLEASE WAIT..."
1370 IF OPT=24 THEN 1400
1380 OPEN #3,12,0,JFN#
1390 GOSUB READJX
1395 QI=JIX(ZERO):QA=JADR+6:QL=JLEN:QF=3:QDESC$=BLANK$:GOSUB IGET
1397 JONT=JANT(ZERO):DATE1=JDATE(ZERO)
1400 REM VECTOR TO APPROPRIATE ROUTINE
1450 GOSUB 1000*(OPT-19)
1490 REM
1500 REM "QUIT" ROUTINE
1505 ? :? "EXITING...PLEASE WAIT..."
1510 GOSUB WRITEJX
1520 JANT(ZERO)=JONT:JDATE(ZERO)=DATE1:JDESC$=BLANK$
1525 QI=JIX(ZERO):QA=JADR+6:QL=JLEN:QF=3:GOSUB IFUT
1530 CLOSE #3F
1545 RETURN
2000 REM ADD OR INSERT
2005 GOSUB READCX:FOR CCNT=ZERO TO CMAX-ONE:IF CIX(CCNT+ONE)>IE7 THEN NEXT CCNT
2010 GRAPHICS ZERO:?"ADD OR INSERT JOURNAL RECORDS":? :?
2020 IF JONT THEN 2100
2030 ? "NEW JOURNAL FILE ---":? " ENTER STARTING AND ENDING DATES":? " FOR PERIOD (IN FORM M-D-YY)"
2040 TRAP 2010:?"START DATE ";:INPUT @D:TRAP UNTRAP:IF @D<10000 THEN 2040
2045 DATE1=@D:JDATE(ZERO)=@D:GOSUB FDATE:?" (";FMT$;")"
2050 TRAP 2010:?"END DATE ";:INPUT @D:TRAP UNTRAP:IF @D<10000 THEN 2050
2055 JDATE2(ZERO)=@D:GOSUB FDATE:?" (";FMT$;")"
2060 ? :? "DATES OKAY ";:GOSUB YESND:IF BYN#ND THEN 2010
2070 QI=JIX(ZERO):QA=JADR+6:QL=JLEN:QF=3:GOSUB IFUT
2080 ? :? :GOTO 2120
2100 REM ASK FOR REC NUM
2110 ? "THERE ARE ";JONT;" JOURNAL RECORDS":? :?
2115 IF JONT=JMAX THEN PRINT "THIS FILE IS FULL! ":? "HIT RETURN TO EXIT ";:INPUT TEMP$:GOTO QUIT
2120 ? "Inserts take place AFTER the record"
2125 ? " number you specify."

```

# COMPUMAX

```

2130 ? "To add records to the END of the"
2135 ? " file, just hit RETURN ."
```

```

2137 ? "To Exit, enter E for record number"
2140 ? :? "RECORD NUMBER FOR INSERT ";:TRAP 2100:INPUT TEMP$
2150 IF LEN(TEMP$)=0 THEN RECDUM=JCNT+ONE:TRAP UNTRAP:GOTO 2200
2155 IF TEMP$(1,1)="E" THEN GOTO QUIT
2157 RECDUM=VAL(TEMP$):TRAP UNTRAP
2160 IF RECDUM<0 OR RECDUM>INT(RECDUM) THEN ? "INVALID RECORD NUMBER":GOTO 2140
2165 IF RECDUM>JCNT THEN ? "ONLY ";JCNT;" RECORDS IN FILE":GOTO 2140
2170 RECDUM=RECDUM+ONE:QI=JIX(JMAX):FOR I=JMAX TO RECDUM STEP -ONE:JIX(I)=JIX(I-ONE):NEXT I:JIX(RECDUM)=QI
2200 REM INDEX READY
2205 TRAP 2010
2210 GRAPHICS ZERO:?"ADDING JOURNAL RECORD NUMBER ";RECDUM:?" :? :? "ENTER INFORMATION:":?
2220 ? "DATE (MMDDYY) ";:INPUT QD:JDATE(ZERO)=QD:GOSUB FDATE:?" " (";FMT$;)"
2225 TRAP 2200
2230 ? "DESCRIPTION ";:INPUT TEMP$:IF LEN(TEMP$)>30 THEN ? " DESCRIPTION TOO LONG ":GOTO 2230
2235 JDESC$=BLANK$:JDESC$=TEMP$
2240 ? "ACCT NUMBER ";:INPUT QAC:IF QAC<101 OR QAC>999 OR QAC<>INT(QAC) THEN ? "BAD ACCT NUMBER":GOTO 2240
2244 TRAP UNTRAP
2245 FOR QT=1 TO CCNT:IF INT(CIX(QT)/IE7)=QAC THEN 2250
2247 NEXT QT:?" NO SUCH ACCT NUMBER IN CHART OF ACCTS":GOTO 2240
2250 JACCT$=STR$(QAC)
2255 ? "AMOUNT ";:INPUT QT:JAMT(ZERO)=QT
2260 QI=JIX(RECDUM):JIX(RECDUM)=QI+QAC*IE7
2270 GOSUB JINPUT:JCNT=JCNT+ONE
2280 GOTO 2010
3000 REM UPDATE EXISTING
3010 GOSUB READCX:FOR CCNT=ZERO TO CMAX-ONE:IF CIX(CCNT+ONE)>IE7 THEN NEXT CCNT
3100 GRAPHICS ZERO:?"INSPECT/CHANGE/DELETE JOURNAL RECORDS":?
3110 ? "JOURNAL FILE FOR PERIOD:":QD=DATE1:GOSUB FDATE:?" " ";FMT$;
3120 QD=JDATE(ZERO):GOSUB FDATE:?" THROUGH ";FMT$
3130 ? :? :? "THERE ARE ";JCNT;" RECORDS IN THE FILE":? :?
3140 TRAP 3100:?" [ RECORD NUMBER OF 0 EXITS ] ":?
3150 ? "WHAT RECORD NUMBER TO UPDATE ";:INPUT RECDUM:IF RECDUM=0 THEN GOTO QUIT
3155 IF RECDUM=ONE AND RECDUM=JCNT AND RECDUM=INT(RECDUM) THEN 3200
3160 ? " INVALID RECORD NUMBER ":? :GOTO 3140
3200 REM RECDUM READY
3210 TRAP UNTRAP
3220 QI=JIX(RECDUM):GOSUB JIGET
3230 GOSUB 3700:?" :? :? :? "Select an option:"
3235 ? " E Exit"
3240 ? " C Change this record"
3250 ? " D Delete this record"
3260 ? " F go Forward to next record"
3275 ? " B go Backward to previous record"
3280 ? "SELECT? ";:GET OPT,OPT
3290 IF OPT<65 OR OPT>70 THEN PRINT CHR$(253):GOTO 3250
3295 ? CHR$(OPT):ON OPT-65 GOTO 3400,3500,3700,3100,3450
3400 REM BACK
3410 RECDUM=RECDUM-ONE:IF RECDUM<ONE THEN 3100
3420 GOTO 3200
3450 REM FORWARD
3460 RECDUM=RECDUM+ONE:IF RECDUM>JCNT THEN 3100

```

```

3500 REM CHANGE
3510 GOSUB 3900:?: "Enter new information.":? " For no change, hit just RETURN.":?
3520 TRAP 3500
3530 ? "DATE(MYDDYY)";:INPUT TEMP$:IF LEN(TEMP$)=0 THEN 3550
3535 QD=VAL(TEMP$):IF QD<10000 THEN 3530
3540 JDATE(ZERO)=QD:GOSUB FDATE:?" " (";FMT$;)"
3550 ? "DESCRIPTION ";:INPUT TEMP$:IF LEN(TEMP$)=0 THEN 3560
3555 JDESC$=BLANK$:JDESC$=TEMP$
3560 ? "ACCT NUMBER ";:INPUT TEMP$:IF LEN(TEMP$)=0 THEN 3600
3570 QAC=VAL(TEMP$):IF QAC<101 OR QAC>999 OR QAC<>INT(QAC) THEN ? " BAD ACCT NUMBER ";GOTO 3560
3580 FOR QT=1 TO CCNT:IF QAC<>INT(CIX(QT)/IE7) THEN NEXT QT:?" ACCT NOT IN CHART OF ACCTS ";GOTO 3560
3590 JACCT$=STR$(QAC):QI=JIX(RECNUM):QT=INT(QI/IE7):JIX(RECNUM)=QI-QT*IE7+QAC*IE7
3600 ? "TRANS. AMT. ";:INPUT TEMP$:IF LEN(TEMP$)=0 THEN 3620
3610 JAMT(ZERO)=VAL(TEMP$)
3620 QI=JIX(RECNUM):GOSUB JIFUT
3690 GOTO 3100
3700 REM DELETE
3710 ? :? " CAUTION !! ":? "DELETE RECORD NUMBER ";RECNUM;" ";:GOSUB YESNO:IF BYN=NO THEN 3100
3720 QI=JIX(RECNUM):FOR QT=RECNUM TO JMAX-ONE:JIX(QT)=JIX(QT+ONE):NEXT QT
3730 JIX(JMAX)=QI-(IE7*INT(QI/IE7))
3740 JCNT=JCNT-ONE:GOTO 3100
3800 GRAPHICS ZERO:?" JOURNAL RECORD NUMBER ";RECNUM:?"
3805 ? " DATE: ";:QD=JDATE(ZERO):GOSUB FDATE:?" FMT$
3810 ? "DESCRIPTION: ";JDESC$
3820 ? "ACCT NUMBER: ";JACCT$
3825 QN=JAMT(ZERO):GOSUB PRETTY
3830 ? "TRANS. AMT.: ";FMT$
3840 ? :RETURN
4000 REM CHANGE FILE HDR
4010 GRAPHICS ZERO:?"CHANGE JOURNAL FILE HEADER INFO":? :?
4020 ? "JOURNAL FILE FOR PERIOD:";:QD=DATE1:GOSUB FDATE:?" " ";FMT$;
4030 QD=JDATE2(ZERO):GOSUB FDATE:?" THROUGH ";FMT$
4040 ? :? :? "THERE ARE ";JCNT;" RECORDS IN THE FILE":? :?
4100 ? :? "Enter new header information.":? " For no change, hit just RETURN.":?
4120 ? "STARTING";:GOSUB 4900:IF QN THEN JDATE(ZERO)=QN
4130 ? " ENDING";:GOSUB 4900:IF QN THEN JDATE2(ZERO)=QN
4140 ? :? "DATES OKAY ";:GOSUB YESNO:IF BYN=NO THEN 4000
4150 QA=JADR+6:QL=JLEN:QF=3:QI=JIX(ZERO):GOSUB IFUT
4160 CLOSE #QF
4190 RETURN
4900 REM GETDATE
4910 ? " DATE OF PERIOD ";:INPUT TEMP$:IF LEN(TEMP$)=0 THEN QN=0:RETURN
4920 TRAP 4990:QN=VAL(TEMP$):QD=QN:GOSUB FDATE:?" (";FMT$;)"
4930 RETURN
4990 QN=0:RETURN
5000 REM INIT
5010 GRAPHICS ZERO:?"(RE)INITIALIZE JOURNAL FILE":? :?
5020 FRONT " CAUTION: use this option only after posting journal to chart of accts"
5100 REM ACTUAL INIT
5110 TRAP LNTRAP
5115 ? :? :? "are you SURE about this ";:GOSUB YESNO:IF BYN=NO THEN RETURN
5120 QA=JADR:QL=JLEN:QF=3
5130 OPEN #QF,0,ZERO,LFN$:JACCT$=BLANK$:JDESC$=BLANK$:JAMT(ZERO)=ZERO:JDATE(ZERO)=ZERO
5135 ? :? :? "...please wait..."

```



# COMPUMAX

```

1000 REM XXXXXXXXXXXXXXXXXXXXXXXX
1001 REM X
1002 REM X LEDGER 3 -- LIST FILES
1003 REM X
1004 REM XXXXXXXXXXXXXXXXXXXXXXXX
1050 DIM CURTOT(9),YDTOT(9)
1055 DIM TEMP$(31)
1100 REM SUBR ADDRESSES
1200 GRAPHICS ZERO:? "LEDGER3 -- LIST FILE CONTENTS":? :? :? "SELECT AN OPTION:"
1220 ? " 31 LIST ENTIRE CHART OF ACCOUNTS"
1230 ? " 32 LIST SELECTED RANGE IN":? " CHART OF ACCOUNTS"
1240 ? " 33 LIST ENTIRE JOURNAL FILE"
1250 ? " 34 LIST SELECTED RANGE OF":? " JOURNAL RECORDS"
1290 ? " 0 RETURN TO MASTER MENU"
1300 TRAP 1200:CLOSE #PR:? :? "OPTION":;INPUT OPT:TRAP UNTRAP
1310 IF OPT=ZERO THEN GOTO GOMDHE
1320 IF OPT<31 OR OPT>34 OR OPT<>INT(OPT) THEN 1200
1350 GOSUB 1000*(OPT-29):GOTO 1200
1499 STOP
2000 REM LIST ALL OF CHARTL
2010 GRAPHICS ZERO:? "LIST ALL OF CHART OF ACCOUNTS"
2020 PFLAG=ZERO:FIRST=101:LAST=999
2090 GOTO 3100
3000 REM LIST OF SOME OF CHARTL
3010 GRAPHICS ZERO:? "LIST PORTION OF CHART OF ACCOUNTS"
3020 PFLAG=ONE:? :? "SPECIFY LOWEST AND HIGHEST ACCOUNT":? " NUMBERS TO BE LISTED":?
3030 TRAP 3000:? "LOWEST : ";;INPUT FIRST
3040 ? "HIGHEST: ";;INPUT LAST:TRAP UNTRAP
3050 IF FIRST<INT(FIRST) OR LAST<INT(LAST) THEN ? "WHOLE NUMBERS ONLY":GOTO 3020
3040 IF FIRST<101 OR LAST>999 THEN ? "VALID ACCT NUMBERS ARE 101 THRU 999":GOTO 3020
3070 IF FIRST>LAST THEN ? "LOWEST CANNOT BE GREATER THAN HIGHEST":GOTO 3020
3100 REM ALL AND RANGE JOIN HERE
3110 GOSUB PROKEY:? :? "...PLEASE WAIT..."
3120 ? :?
3130 FOR I=ZERO TO 9:CURTOT(I)=ZERO:YDTOT(I)=ZERO:NEXT I
3135 OPEN #2,12,0,CFN$
3140 GOSUB READCX:CI=CIX(ZERO):GOSUB CIGET:CCNT=CCUR(ZERO):CDATE=CYTD(ZERO)
3200 REM START ACTUAL PRINT
3205 FOR QT=1 TO 5:PRINT #PR:;NEXT QT
3210 QD=CDATE:GOSUB FDATE:PRINT #PR;"CHART OF ACCTS AS OF ";FMT$
3220 PRINT #PR;" _____"
3230 PRINT #PR:PRINT #PR;"THERE ARE ";CCNT;" ACCTS IN THE FILE":PRINT #PR
3240 PRINT #PR;"ACCT # ACCOUNT NAME CURRENT AMT CURR.AMT"
3245 Q$REV=0:PRINT #PR:PRINT #PR
3250 FOR I=ONE TO CCNT+ONE
3255 IF I<CCNT THEN QD=10:GOTO 3290
3260 CI=CIX(I):GOSUB CIGET
3265 QAC=INT(CIX(I)/157):IF QAC<FIRST THEN 3490
3270 IF QAC>LAST THEN 3500
3280 QD=INT(QAC/100)
3290 IF QD=Q$REV THEN 3390
3295 IF PFLAG THEN 3350
3300 TE

```

# COMPUTER

```

3309 REM PRINT A TOTAL
3310 GOSUB 3900+10*QREV:TEMP$(LEN(TEMP$)+1)=BLANK$:PRINT #PR;"      ";TEMP$;
3320 QN=CURTOT(QREV):GOSUB FRETTY:PRINT #PR;"      ";FMT$;
3330 QY=YDTOT(QREV):GOSUB FRETTY:PRINT #PR;"      ";FMT$
3350 PRINT #PR:PRINT #PR
3350 QREV=QC
3390 REM PRINT ORDINARY DATA
3400 IF DCCMT THEN 3490
3410 PRINT #5;CACCT$;"      ";DESC$;"      ";
3415 CURTOT(QC)=CURTOT(QC)+CCUR(ZERO)
3470 QN=CCUR(ZERO):GOSUB FRETTY:PRINT #PR;FMT$;"      ";
3475 YDTOT(QC)=YDTOT(QC)+CYTD(ZERO)
3480 QY=CYTD(ZERO):GOSUB FRETTY:PRINT #PR;FMT$
3490 NEXT I
3500 REM END OF LOOP
3510 CLOSE #2:IF FFLAG THEN 3585
3520 QN=CURTOT(QN)+CURTOT(2):GOSUB FRETTY:TEMP$=FMT$:QN=YDTOT(QN)+YDTOT(2):GOSUB FRETTY
3525 PRINT #PR:PRINT #PR:PRINT #PR;"TOTAL ASSETS      ";TEMP$;"      ";FMT$
3530 QN=ZERO:QC=ZERO:FOR I=3 TO 6:QN=QN+CURTOT(I):QC=QC+YDTOT(I):NEXT I
3535 GOSUB FRETTY:TEMP$=FMT$:QY=QC:GOSUB FRETTY
3540 PRINT #PR:PRINT #PR:PRINT #PR;"TOTAL LIABILITIES + OWNER'S EQUITIES      ";TEMP$;"      ";FMT$
3585 IF PRFLAG=ZERO THEN ? :? :? "CONTINUE";:GOSUB YESNO:IF RYN=NO THEN 3585
3590 RETURN
3910 TEMP$="TOTAL CURRENT ASSETS":RETURN
3920 TEMP$="TOTAL NON-CURRENT ASSETS":RETURN
3930 TEMP$="TOTAL CURRENT LIABILITIES":RETURN
3940 TEMP$="TOTAL LONG TERM LIABILITIES":RETURN
3950 TEMP$="TOTAL OWNER EQUITY (LESS R.E.)":RETURN
3960 TEMP$="TOTAL RETAINED EARNINGS":RETURN
3970 TEMP$="TOTAL REVENUE":RETURN
3980 TEMP$="TOTAL DIRECT EXPENSES":RETURN
3990 TEMP$="TOTAL G. & A. EXPENSE":RETURN
3999 STOP
4000 REM LIST ALL OF JOURNAL
4010 GRAPHICS ZERO:?"LIST ALL OF JOURNAL FILE"
4020 PFLAG=ZERO:FIRST=ONE:LAST=IE7
4090 GOTO 5100
5000 REM LIST PORTION OF JOURNAL
5010 GRAPHICS ZERO:?"LIST PORTION OF JOURNAL FILE"
5020 PFLAG=ONE:?"SPECIFY LOWEST AND HIGHEST RECORD "? " NUMBERS TO BE LISTED:"?
5030 TRAP 5000:?"LOWEST : ";:INPUT FIRST
5040 ? "HIGHEST: ";:INPUT LAST:TRAP UNTRAP
5050 IF FIRST<INT(FIRST) OR LAST<INT(LAST) OR FIRST<ONE THEN ? "WHOLE NUMBERS ONLY":GOTO 5020
5070 IF FIRST>LAST THEN ? "LOWEST CANNOT BE GREATER THAN HIGHEST":GOTO 5020
5100 REM ALL AND RANGE JOIN HERE
5110 GOSUB FREQUY:?" :? :? "...PLEASE WAIT...":?
5120 TRAP UNTRAP
5130 BALANCE=ZERO
5140 GOSUB READJX

```

# COMPUTER

```

5170 QF=3:OPEN #QF,12,0,JFN$
5180 QI=JIX(ZERO):QA=JACK+6:QL=JLEN:GOSUB IGET:JCNT=JAMT(ZERO):DATE1=JDATE(ZERO)
5190 IF LAST>JCNT THEN LAST=JCNT
5200 IF LAST<FIRST THEN FIRST=LAST
5200 REM HDR
5210 GRAPHICS ZERO:TRAP UNTRAF:?? ??
5220 QD=DATE1:GOSUB FDATE:TEMP$=FMT$:QD=JDATEZ(ZERO):GOSUB FDATE
5230 PRINT #PR;"JOURNAL FILE LISTING"
5240 PRINT #PR;" PERIOD ";TEMP$;" THRU ";FMT$
5250 PRINT #PR;" _____":PRINT #PR
5260 PRINT #PR;"JOURNAL FILE HAS ";JCNT;" RECORDS":PRINT #PR:PRINT #PR
5270 PRINT #PR;"REC ACCT TRANSACTION      RUNNING ";
5275 IF PRFLAG THEN PRINT #PR;" ";
5280 PRINT #PR;"      DATE      AMOUNT      BALANCE":PRINT #PR:PRINT #PR
5300 REM PRINT LOOP
5310 FOR RECDUM=FIRST TO LAST
5320 QI=JIX(RECDUM):GOSUB JIGET:QD=JDATE(ZERO):GOSUB FDATE
5330 TEMP$=STR$(RECDUM+1000):PRINT #PR;TEMP$(2,4);" ";JACCT$;" ";JDESC$;
5340 IF PRFLAG THEN PRINT #PR;" ";
5350 QN=JAMT(ZERO):QT=QN:QI=ASC(JACCT$)-48
5360 IF QI<=2 OR QI>=8 THEN QT=-QT
5370 BALANCE=BALANCE-QT:QD=JDATE(ZERO):GOSUB FDATE
5380 PRINT #PR;" ";FMT$;" ";
5390 GOSUB PSETTY:TEMP$=FMT$:QN=BALANCE:GOSUB PSETTY
5400 PRINT #PR;TEMP$;" ";FMT$
5420 IF STR$(INT(JIX(RECDUM)/127))<JACCT$ THEN PRINT "INDEX/DATA ERROR ";JACCT$;"^";JIX(RECDUM)
5450 NEXT RECDUM
5500 REM END OF LOOP
5510 CLOSE #3
5520 IF PRFLAG=ZERO THEN ? :? :? "CONTINUE ";:GOSUB YESNO:IF QYN=NO THEN 5500
5590 RETURN

```



# COMPUNIA

```

1593 TEMP5="LIABILITIES + OWNER'S EQUITY ARE";TEMP25=" OVER ASSETS BY "
1590 PRINT #PR;TEMP5;PRINT #PR;TEMP25;FMT5
1595 IF PRFLAG THEN ? TEMP5;? TEMP25;FMT5
1600 REM ASK ABOUT POSTING
1610 ? :? :? "DO YOU WANT TO POST ";:GOSUB YESNO
1620 IF BYN=NO THEN 9000
1630 ? :IF SGN(C5) THEN ? " CAUTION UNBALANCED POSTING!"
1635 ? :? "ARE YOU SURE ";:GOSUB YESNO;IF BYN=NO THEN 9000
2000 REM POSTING ROUTINE
2010 FOR I=ONE TO 5:PRINT #PR:NEXT I
2020 PRINT #PR;"AUDIT TRAIL OF POSTED TRANSACTIONS":PRINT #PR
2040 PRINT #PR;"ACCT REC TRANSACTION          ";
2065 IF PRFLAG THEN PRINT #PR;" ";
2070 PRINT #PR;"          DATE          AMOUNT"
2080 PRINT #PR
2130 REM DON'T UPDATE HEADER UNTIL THROUGH
2200 REM POSTING LOOP
2240 FOR CPT=ONE TO CCNT
2250 CANT=ZERO
2260 QI=CIX(CPT):GOSUB CIGET
2265 REM WE SHOULD BE ABLE TO USE VAL(CACCT5) HERE, BUT SOME WIERDO BUG SOMETIMES MESSES UP CACCT5!
2270 QAC=INT(CIX(CPT)/1E7):IF QAC=600 THEN REFTR=CPT
2300 FOR JPT=ONE TO JCNT
2320 IF BIT(JEX(JPT)/1E7) < QAC THEN 2490
2330 REM FOUND A RECORD TO POST
2340 QI=JEX(JPT):GOSUB JIGET
2350 TEMP5=STR$(JPT+1000):PRINT #PR;JACCT5;" ";TEMP5(2,4);" ";JDESC5;;IF PRFLAG THEN PRINT #PR;" ";
2360 QD=DATE(ZERO):GOSUB FDATE;TEMP5=FMT5:QJ=JANT(ZERO):GOSUB FRETTY
2370 PRINT #PR;"          ";TEMP5;" ";FMT5
2410 CANT=CANT+JANT(ZERO)
2420 JEX(JPT)=ZERO
2430 NEXT JPT
2500 REM END OF THIS CACCT
2510 IF CANT=ZERO THEN 2590
2520 CCLR(ZERO)=CCLR(ZERO)+CANT:CYTD(ZERO)=CYTD(ZERO)+CANT
2525 CACCT5=STR$(QAC)
2530 QI=CIX(CPT):GOSUB CIPUT
2550 NEXT CPT
2600 REM VALIDATE POST AND UPDATE R.E.
2610 QI=CIX(REFTR):GOSUB CIGET
2619 REM C3 AND C4 PRESERVED FROM TRIAL BALANCE
2620 CCLR(ZERO)=CCLR(ZERO)+C4-C3
2630 CYTD(ZERO)=CYTD(ZERO)+C4-C3
2640 QI=CIX(REFTR):GOSUB CIPUT
2640 FOR JPT=ONE TO JCNT
2670 IF JEX(JPT) THEN PRINT #PR;"XXXXXXXXXXXXXERRORXXXXXXXXX":PRINT #PR;" NO ACCT FOR JOURNAL RECORD #";JPT
2680 NEXT JPT
2700 QI=CIX(ZERO):GOSUB CIGET
2710 CYTD(ZERO)=DATEZ(ZERO):QI=CIX(ZERO):GOSUB CIPUT
2720 CLOSE #2
2730 CLOSE #3
2750 ? #PR;? #PR;? #PR;" POSTING COMPLETE "
2760 IF PRFLAG=NO THEN ? :? :? "CONTINUE ";:GOSUB YESNO;IF BYN=NO THEN 2760
2790 GOTO GOROME
9000 REM COME HERE TO MAYBE TRY AGAIN
9010 ? :? :? :? "RUN THIS REPORT AGAIN ";:GOSUB YESNO
9020 IF C5=NO THEN 9000

```

# COMPUMAX

```

1000 REM LEDGERS
1020 DIM TEMP$(31),TITLE$(30)
1030 DIM DASH$(37):DASH$="-----"
1035 DIM E$LIN$(39):E$LIN$="":REM E$LIN$=BLANK$ FOR 80-COL PRINTER
1040 REV=ZERO:DIRX$=ZERO:GAX$=ZERO:CFLAG=NO
1050 DIM E$OLIN$(37):E$OLIN$="-----"
1200 GRAPHICS ZERO:?"LEDGERS — PROFIT & LOSS STATEMENT":? :?
1205 TRAP 1200
1210 ? "Please enter TITLE for this statement":? " and START DATE (in form MDDYY) of":? " this fiscal year:"
1220 ? :?"TITLE ";;INPUT TITLE$
1230 ? " DATE ";;INPUT STDATE:QD=STDATE:GOSUE: FDATE:?" (":FHT$;")":?
1240 ? "Title and date ok ";;GOSUE: YES:NO:IF QYN=NO THEN 1200
1250 ? :? :GOSUE: PROMPT
1260 ? :? :? "...PLEASE WAIT..."
1300 REM SETUP
1305 TRAP UNTRAP
1310 GOSUE: READCX
1320 OPEN #2,12,0,CFN$
1330 QI=CIX(ZERO):GOSUE: CIGET:CCNT=CDLR(ZERO):CDATE=CYTD(ZERO)
1400 REM PRINTOUT
1410 TEMP$=FHT$:FOR I=ONE TO 5:PRINT #PR:NEXT I
1420 PRINT #PR;"PROFIT AND LOSS STATEMENT —";TITLE$
1440 PRINT #PR:QD=CDATE:GOSUE: FDATE
1450 PRINT #PR;" PERIOD ";;TEMP$;" THRU ";;FHT$
1460 FOR CPT=ONE TO CCNT:IF CIX(CPT)<=7000000000 THEN NEXT CPT:?" NO REVENUE OR EXPENSE ACCTS ?? ":GOTO QUIT
1500 REM THE ACTUAL REPORT
1520 PRINT #PR:PRINT #PR:PRINT #PR,"REVENUES":PRINT #PR
1530 FOR CPT=CPT TO CCNT
1540 QI=CIX(CPT):IF QI>8000000000 THEN 1600
1550 GOSUE: CIGET:QY=CYTD(ZERO):IF QY=ZERO THEN 1590
1555 REV=REV+QY:GOSUE: PRETTY:PRINT #PR;QDESC$;BLANK$(ONE,18);FHT$
1590 NEXT CPT:CFLAG=YES
1600 REM TOT REVENUES
1610 QY=REV:GOSUE: PRETTY
1620 PRINT #PR
1622 PRINT #PR;E$LIN$;E$OLIN$
1625 PRINT #PR;E$LIN$;" TOTAL REVENUES ";;FHT$
1627 PRINT #PR;E$LIN$;E$OLIN$
1700 REM DIR EXP
1710 IF CFLAG THEN ? " NO EXPENSE ACCOUNTS ??? ":GOTO GOMORE
1720 PRINT #PR:PRINT #PR,"EXPENSES":PRINT #PR
1730 FOR CPT=CPT TO CCNT
1740 QI=CIX(CPT):IF QI>9000000000 THEN 1800
1750 GOSUE: CIGET:QY=CYTD(ZERO):IF QY=ZERO THEN 1790
1755 DIRX$=DIRX$+QY:GOSUE: PRETTY:PRINT #PR;QDESC$;BLANK$(ONE,18);FHT$
1790 NEXT CPT:CFLAG=YES
1800 REM TOT DIR EXP
1810 QY=DIRX$:GOSUE: PRETTY
1820 PRINT #PR;E$LIN$;BLANK$(ONE,9);"-----"
1825 PRINT #PR;E$LIN$;" TOTAL DIRECT EXPENSES ";;FHT$:PRINT #PR
1900 REM CIA EXP
1910 IF CFLAG THEN 2000

```



# COMPUNIA

```

1000 REM LEDGER6
1020 DIM TEF$(31),TITLE$(30)
1030 DIM DASH$(37):DASH$=""
1024 REM CHANGE BELOW FOR VARIOUS PRINTERS
1025 DIM BLIN$(40):BLIN$=""
1040 CURA=ZERO:NCURA=ZERO:CURL=ZERO:NCURL=ZERO:EQUTY=ZERO
1200 GRAPHICS ZERO:?"LEDGER6 - BALANCE SHEET":? :?
1205 TRAP 1200
1210 ? "Please enter TITLE for this balance sheet:":?
1220 ? "TITLE ";:IN=UT TITLE$
1240 ? :? :GOSUB FKQJJKY
1240 ? :? :? "...PLEASE WAIT..."
1300 REM SETUP
1305 TRAP UNTRAP
1310 GOSUB KEADCK
1320 OFEN #2,12,0,CFM#
1330 QI=CIX(ZERO):GOSUB CIGET:CENT=CCUR(ZERO):CDATE=CYTD(ZERO)
1400 REM PRINTOUT
1410 FOR I=ONE TO 5:PRINT #PR:NEXT I
1430 PRINT #PR;"BALANCE SHEET -";TITLE$
1440 PRINT #PR:QD=CDATE:GOSUB FDATE
1450 PRINT #PR;" AS OF ";FMT$
1460 PRINT #PR
1500 REM THE ACTUAL REPORT
1510 PRINT #PR:PRINT #PR,"CURRENT ASSETS":PRINT #PR
1520 FOR CPT=ONE TO CCNT
1540 QI=CIX(CPT):IF QI=2000000000 THEN 1600
1550 GOSUB CIGET:QD=CYTD(ZERO):IF QD=ZERO THEN 1590
1555 CURA=CURA+QI:GOSUB FPRETTY:PRINT #PR:QDESOS:BLANK$(ONE,18):FMT$
1590 NEXT CPT:CFLAG=YES
1600 REM TOTAL CURRENT ASSETS
1610 QD=CURA:GOSUB FPRETTY
1620 PRINT #PR:BLIN$:BLANK$(ONE,9):" _____"
1625 PRINT #PR:BLIN$;" TOTAL CURRENT ASSETS ";FMT$:PRINT #PR
1630 PRINT #PR
1700 REM NON-CURRENT ASSETS
1710 IF CFLAG THEN ? " NO LIABILITIES ??? ":GOTO GOHOME
1720 PRINT #PR,"NON-CURRENT ASSETS":PRINT #PR
1730 FOR CPT=CPT TO CCNT
1740 QI=CIX(CPT):IF QI=3000000000 THEN 1800
1750 GOSUB CIGET:QD=CYTD(ZERO):IF QD=ZERO THEN 1790
1755 NCURA=NCURA+QI:GOSUB FPRETTY:PRINT #PR:QDESOS:BLANK$(ONE,18):FMT$
1790 NEXT CPT:CFLAG=YES
1800 REM TOTAL NON CUR ASSETS
1810 QD=NCURA:GOSUB FPRETTY
1820 PRINT #PR:BLIN$:BLANK$(ONE,9):" _____"
1825 PRINT #PR:BLIN$;"TOTAL NONCURRENT ASSETS ";FMT$:PRINT #PR
1850 REM TOTAL ASSETS
1860 PRINT #PR:QD=CURA+NCURA:GOSUB FPRETTY
1865 PRINT #PR:DASH$
1870 PRINT #PR:" TOTAL ASSETS ";FMT$:PRINT #PR:DASH$

```



```

1900 REM CURRENT LIABILITIES
1910 IF CFLAG THEN ? " NO LIABILITIES ??? ":GOTO GORHME
1920 PRINT #PR;PRINT #PR,"CURRENT LIABILITIES":PRINT #PR
1930 FOR CPT=CPT TO CCNT
1940 QI=CIX(CPT):IF QD=4000000000 THEN 2000
1950 GOSUB CIGET:QY=CYPD(ZERO):IF QY=ZERO THEN 1990
1955 CUR=CURL+QY:GOSUB FPRETTY:PRINT #PR;CODESC;ELANK$(ONE,18);FMT$
1990 NEXT CPT:CFLAG=YES
2000 REM TOTAL CUR LIAE
2010 QY=CURL:GOSUB FPRETTY
2020 PRINT #PR;ELIN$;BLANK$(ONE,9);" _____"
2025 PRINT #PR;ELIN$;"TOTAL CURR. LIABILITIES ";FMT$:PRINT #PR
2100 REM LONG-TERM LIAB.
2110 IF CFLAG THEN ? " NO EQUITIES ??? ":GOTO GORHME
2120 PRINT #PR,"LONG-TERM LIABILITIES":PRINT #PR
2130 FOR CPT=CPT TO CCNT
2140 QI=CIX(CPT):IF QD=5000000000 THEN 2200
2150 GOSUB CIGET:QY=CYPD(ZERO):IF QY=ZERO THEN 2190
2155 NLURL=NCURL+QY:GOSUB FPRETTY:PRINT #PR;CODESC;ELANK$(ONE,18);FMT$
2190 NEXT CPT:CFLAG=YES
2200 REM TOTAL L.T. LIAB.
2210 QY=NCURL:GOSUB FPRETTY
2220 PRINT #PR;ELIN$;BLANK$(ONE,9);" _____"
2225 PRINT #PR;ELIN$;" TOTAL LONG TERM LIAB'S ";FMT$:PRINT #PR
2300 REM EQUITIES
2310 IF CFLAG THEN ? " NO EQUITIES ??? ":GOTO GORHME
2320 PRINT #PR,"OWNER'S EQUITIES":PRINT #PR
2330 FOR CPT=CPT TO CCNT
2340 QI=CIX(CPT):IF QD=7000000000 THEN 2400
2350 GOSUB CIGET:QY=CYPD(ZERO):IF QY=ZERO THEN 2390
2355 EQUITY=EQUITY+QY:GOSUB FPRETTY:PRINT #PR;CODESC;ELANK$(ONE,18);FMT$
2390 NEXT CPT:CFLAG=YES
2400 REM TOTAL EQUITIES
2410 QY=EQUITY:GOSUB FPRETTY
2420 PRINT #PR;ELIN$;BLANK$(ONE,9);" _____"
2425 PRINT #PR;ELIN$;" TOTAL OWNER'S EQUITIES ";FMT$:PRINT #PR
2450 REM TOTAL ASSETS
2460 PRINT #PR;QY=CURL+NCURL+EQUITY:GOSUB FPRETTY
2465 PRINT #PR;DASH$
2470 PRINT #PR;" TOTAL LIAB. & O.E. ";FMT$:PRINT #PR;DASH$
2470 FOR I=1 TO 6:PRINT #PR:NEXT I
2500 CLOSE #2
3010 ? "RUN THIS REPORT AGAIN ";GOSUB YESNO:IF GYN=YES THEN RUN
3020 GOTO GORHME

```

```

1000 REM *****
1001 REM *
1002 REM * LEDGER 7 - BACKUP
1003 REM *
1004 REM *****
1050 DIM FILE1$(30),FILE2$(30)
1060 DIM FILE3$(30),FILE4$(30),TEMP$(30)
1100 GRAPHICS ZERO:? "LEDGER 7 - FILE BACKUP"? :?
1110 ? "71 BACKUP CHART OF ACCOUNTS"
1120 ? "72 BACKUP JOURNAL FILE"
1150 ? :? " 0 EXIT"
1200 TRAP 1100:? :? :? "SELECT ";:INPUT OPT
1210 IF OPT=ZERO THEN GOTO GOHOME
1220 IF OPT<INT(OPT) OR OPT<71 OR OPT>72 THEN ? "3":GOTO 1100
1255 TRAP UNTRAP
1250 ON OPT-70 GOTO 2000,3000
2000 GRAPHICS ZERO:? "BACKING UP CHART OF ACCOUNTS FILE"? :?
2010 FILE1$=CFN$:FILE2$=CXFN$:GOSUB 9000
2020 CFN$=FILE1$:CXFN$=FILE2$
2030 SIZE=C*MAX:KSIZE=C*LEN:JFLAG=NO
2040 GRAPHICS ZERO:? :? :? "...please wait..."
2050 GOSUB READCX
2099 GOTO 4000
3000 GRAPHICS ZERO:? "BACKING UP LEDGER JOURNAL FILE"? :?
3010 FILE1$=JFN$:FILE2$=JXFN$:GOSUB 9000
3020 JFN$=FILE1$:JXFN$=FILE2$
3030 KSIZE=J*LEN:JFLAG=YES
3040 GRAPHICS ZERO:? :? :? "...please wait..."
3050 GOSUB READJX
3060 SIZE=J*MAX
3099 GOTO 4000
4000 REM COMMON WORK
4005 GRAPHICS ZERO:? :? "...please wait..."
4010 BUFSZ=#SIZE*(SIZE+ONE)
4020 TRAP 9990:DIM BUF$(BUFSZ+ONE):BUF$(BUFSZ)="?":TRAP UNTRAP
4040 OPEN #2,4,ZERO,FILE1$
4050 POSITION 2,20:? "reading record # ";
4199 REM ...READ IN FILE...
4200 FOR PTR=ZERO TO SIZE
4205 POSITION 20,20:? PTR;" ";
4210 IF JFLAG THEN RI=JIX(PTR):GOTO 4230
4220 RI=CIX(PTR)
4230 QF=2:QA=#SIZE*PTR+ADR(BUF$):QI=#SIZE:GOSUB ISET
4240 NEXT PTR
4250 CLOSE #2
4300 REM BE SURE
4310 GRAPHICS ZERO:? "Copying from file "";FILE1$;"""? " to file "";FILE3$;""
4320 ? :? :? "Be SURE the disk with the TO file is in drive "";FILE3$(2,2);"" !!!"
4330 ? :? " Hit any key to continue";:GET #ONE,RI
4350 GRAPHICS ZERO:? :? "...please wait..."

```

# COMPUTER

```

4350 OPEN #2,9,ZERO,FILE3$
4350 POSITION 2,20:? "writing record # ";
4400 REM ...WRITE OUT NEW FILE...
4410 FOR PTR=ZERO TO SIZE
4420 POSITION 20,20:? PTR;" ";
4430 IF JFLAG THEN QI=JIX(PTR):GOTO 4450
4440 QI=JIX(PTR)
4450 NOTE #2,G5,QI:QI=IE7*INT(QI/IE7)+Q5*1000+QI
4460 IF JFLAG THEN JIX(PTR)=QI:GOTO 4480
4470 CIX(PTR)=QI
4480 QF=2:QA=ADR(2UF$)+RSIZE*PTR:QL=RSIZE:GOSUB 8FUT
4490 NEXT PTR
4500 CLOSE #2
4510 IF JFLAG THEN JXFN$=FILE4$:GOSUB WRITEJX:GOTO 4530
4520 CXFN$=FILE4$:GOSUB WRITEX
4530 ? :? :? :? :? :? " DONE "
4540 FOR QT=1 TO 200:NEXT QT
4599 RUN
9000 REM VERIFY DEFAULT FILE NAMES
9010 ? :? "I assume you wish to back up the file ";FILE1$(4,9);" on disk drive ";FILE1$(2,2);"."
9020 ? :? "Am I correct ";:GOSUB YESNO:IF GYN=YES THEN 9300
9030 ? :? "I had assumed I would use filename ";FILE1$;" . Please enter the"
9040 ? " FULL filename of the file to be backed up.":GOSUB 9E00
9060 FILE1$=TEF$
9070 FILE2$=FILE1$:FILE2$(QT+QNE)="NDX"
9100 ? :? "I will use the file ";FILE2$;" as the index file."
9120 ? :? "Is this correct ";:GOSUB YESNO:IF GYN=YES THEN 9300
9140 ? "Enter FULL filename of index file.":GOSUB 9E00
9170 FILE2$=TEF$
9200 REM DEST FILES
9210 FILE3$=FILE1$:FILE4$=FILE2$
9220 IF FILE1$(2,2) < "1" THEN TRODISK=YES:GOTO 9400
9230 ? :? "Is this a single disk drive system ";:GOSUB YESNO:TRODISK=ONE-GYN
9240 IF GYN THEN 9500
9400 ? :? "We will backup the file FROM drive ";FILE1$(2,2);"."
9410 ? :? "On what drive should I place the copied file ";:INPUT QI
9420 FILE3$(2,2)=CHR$(QI+49):FILE4$(2,2)=FILE3$(2)
9500 ? :? :? "The NEW copied file will be called ";FILE3$(4);" and will be on"
9510 ? " drive ";FILE3$(2,2)
9520 ? :? "Is this OK ";:GOSUB YESNO
9530 IF GYN THEN 9600
9540 ? :? :? "Give FULL filename of new data file.":GOSUB 9200:FILE3$=TEF$

```

CONFIDENTIAL

```

9550 FILE4$=FILE3$:FILE4$(QT+ONE)="IDX"
9555 ? :? "The new INDEX file will be called"
9560 ? " ";FILE4$;"":? " Is this OK ";;GOSUB YESNO:IF BYN THEN 9600
9570 ? :? "Give FULL filename of new index file.":GOSUB 9800:FILE4$=TEMP$
9580 IF FILE1$(2,2) < FILE2$(2,2) OR FILE3$(2,2) < FILE4$(2,2) THEN 9940
9590 GRAPHICS ZERO:?"Copying from file ";FILE1$;"":? " to file ";FILE3$;"":? "
9620 ? :? :? "Be SURE the disk with the FROM file is in drive ";FILE1$(2,2);" !!"
9630 ? :? " Hit any key to continue":GET #Q,QT
9690 RETURN
9800 REM: FILENAME GETTER
9840 ? :? "filename ";;INPUT TEMP$
9845 QL=LEN(TEMP$):IF QL < 8 THEN 9930
9850 IF TEMP$(2,2) < "1" OR TEMP$(2,2) > "4" OR TEMP$(1,1) < "D" OR TEMP$(3,3) < ":" THEN 9900
9860 FOR QT=5 TO QL:IF TEMP$(QT,QT) < "." THEN NEXT QT:GOTO 9920
9890 RETURN
9900 ? :? " ERROR DRIVE SPECIFIER MUST BE OF THE FROM 'D1:', 'D2:', ETC."
9910 FOR QT=1 TO 500:NEXT QT:?" :? :GOTO 9840
9920 ? :? " ERROR FILENAME MUST INCLUDE A '.' ";;GOTO 9840
9930 ? :? " ERROR FILENAME TOO SHORT...CORRECT
9940 ? :? " ERROR DATA AND INDEX FILES MUST BE FROM IS 'Dr:ffffff.ext':GOTO 9910
9990 ? :? " ERROR NOT ENOUGH MEMORY TO BACKUP ON SAME DISK!!":FOR QT=1 TO 1000:NEXT QT:RUN THIS FILE.":STOP

```