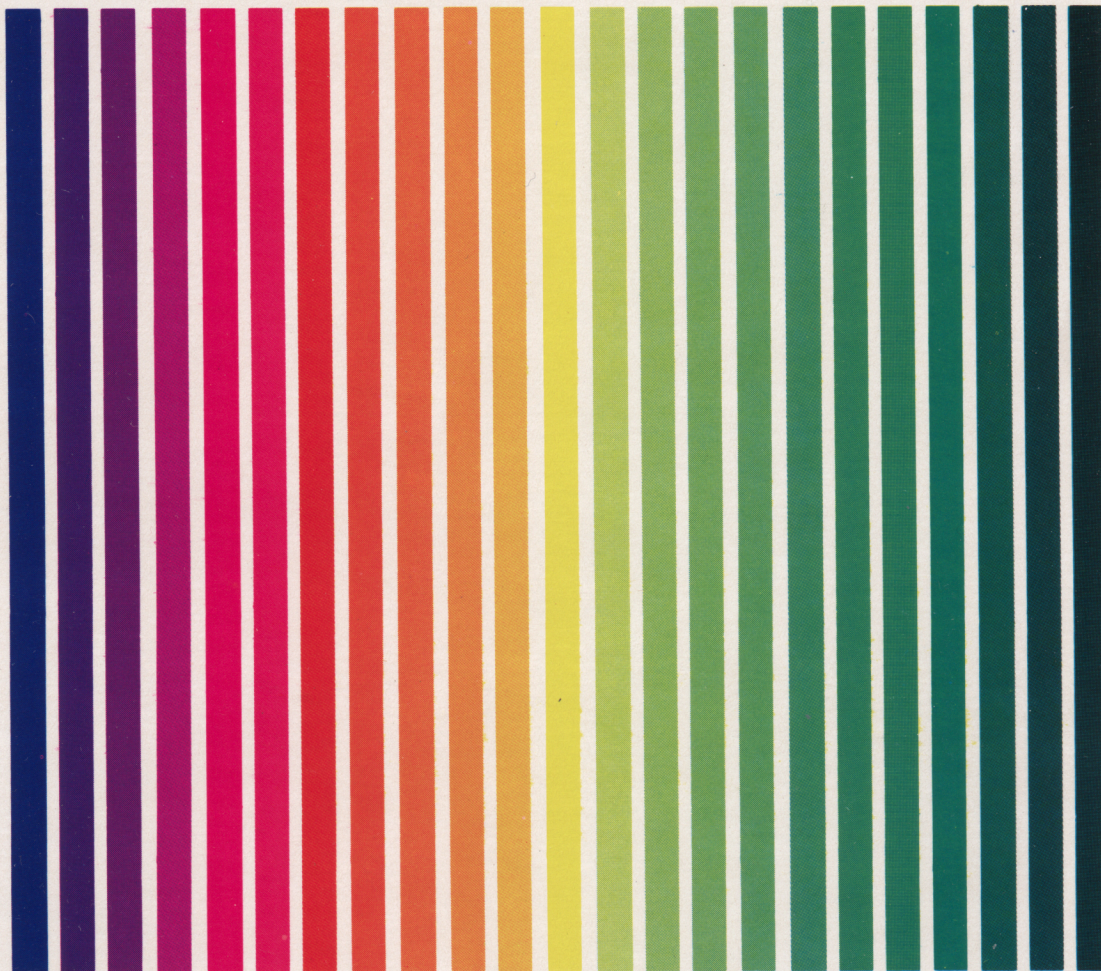


# APX ATARI® PROGRAM EXCHANGE



Nadav Caine

## **MATHEMATIC-TAC-TOE**

Two-player arithmetic drills (ages 8-16)

Cassette: 16K (APX-10082)

Diskette: 24K (APX-20082)

Edition B

User-Written Software for ATARI Home Computers

Nadav Caine

# **MATHEMATIC-TAC-TOE**

Two-player arithmetic drills (ages 8-16)

Cassette: 16K (APX-10082)      Diskette: 24K (APX-20082)

Edition B

)

.

.

)

.

.

)

# MATHEMATIC-TAC-TOE

by

Nadav Caine

Program and Manual Contents ©1982 Nadav Caine

Copyright notice. On receipt of this computer program and associated documentation (the software), the author grants you a nonexclusive license to execute the enclosed software. This software is copyrighted. You are prohibited from reproducing, translating, or distributing this software in any unauthorized manner.

### **Distributed By**

The ATARI Program Exchange  
P.O. Box 3705  
Santa Clara, CA 95055

To request an APX Product Catalog, write to the address above, or call toll-free:

800/538-1862 (outside California)

800/672-1850 (within California)

Or call our Sales number, 408/727-5603

### **Trademarks of Atari**

The following are trademarks of Atari, Inc.

ATARI®

ATARI 400™ Home Computer

ATARI 800™ Home Computer

ATARI 410™ Program Recorder

ATARI 810™ Disk Drive

ATARI 820™ 40-Column Printer

ATARI 822™ Thermal Printer

ATARI 825™ 80-Column Printer

ATARI 830™ Acoustic Modem

ATARI 850™ Interface Module

Printed in U.S.A.

## INTRODUCTION

### OVERVIEW

MATHEMATIC-TAC-TOE is an educational variation of the traditional tic-tac-toe game designed to sharpen basic computational skills. Two players square off against each other, while the computer poses mathematical problems. A player chooses an unoccupied square on the nine-square grid, and the computer then poses a problem. If the player answers correctly, the computer places the player's symbol (X or O) on the square. The winner is the first to fill a row, column, or diagonal line with his or her symbol. The game is a draw if neither player fills all the squares in a row, column, or diagonal line.

MATHEMATIC-TAC-TOE features include (1) four kinds of problems--multiplication, division, addition, or subtraction; (2) 15 levels of difficulty for each kind of problem; and (3) 15 time limit levels for answering a problem. With so many variations, you never outgrow or outmaster MATHEMATIC-TAC-TOE.

### REQUIRED ACCESSORIES

Cassette version  
16K RAM  
ATARI 410 Program Recorder

Diskette version  
24K RAM  
ATARI 810 Disk Drive

ATARI BASIC Language Cartridge

### CONTACTING THE AUTHOR

Users wishing to contact the author about MATHEMATIC-TAC-TOE may call him at:

215/664-8720

## GETTING STARTED

### LOADING MATHEMATIC-TAC-TOE INTO COMPUTER MEMORY

1. Insert the ATARI BASIC Language Cartridge in the slot of your computer.
2. If you have the cassette version of MATHEMATIC-TAC-TOE:
  - a. Turn on your TV set.
  - b. Turn on your computer and connect your program recorder to the computer and to a wall outlet.
  - c. Slide the MATHEMATIC-TAC-TOE cassette into the program recorder's cassette holder and press REWIND on the recorder until the tape rewinds completely. Then press PLAY.
  - d. Type CLOAD on your computer and then press the RETURN key two times. The tape will load into computer memory.
  - e. After the tape finishes loading, the word READY will display on your TV screen. Type RUN and press the RETURN key. The first display screen will appear on your TV screen.

### If you have the diskette version of MATHEMATIC-TAC-TOE:

- a. Turn on your disk drive.
- b. When the BUSY light goes out, open the disk drive door and insert the MATHEMATIC-TAC-TOE diskette with the label in the lower right-hand corner nearest to you. Close the door.
- c. Turn on your computer and TV set.
- d. When the READY prompt displays on your TV screen, type RUN "D:MATHTIC" and press the RETURN key. If you're using more than one disk drive, remember to follow the device initial (D) with the number of the drive containing the MATHEMATIC-TAC-TOE diskette (e.g., RUN "D2:MATHTIC" for disk drive two). The program will load into computer memory and start.

## FIRST DISPLAY SCREEN

The title MATHEMATIC-TAC-TOE displays at the top of your TV screen for a few seconds, along with some sound effects, followed by the copyright message. Then the title disappears and the program draws the game grid: two horizontal lines and two vertical lines:

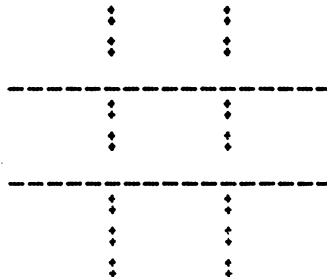


Figure 1 Game Grid

## CHOOSING YOUR OPTIONS

Before beginning to play, you answer five prompted questions about the kind of problem you want, the level of difficulty, the time limit, and your first names. Answer each question by typing in your response and pressing the RETURN key.

First, the computer asks you to type in each player's first name. The prompts are:

INPUT PLAYER ONE'S FIRST NAME

INPUT PLAYER TWO'S FIRST NAME

In response to each prompt, you may type a name as long as eight characters (and press the RETURN key).

Then the program asks you what kind of problem you want to work on. The prompt is:

Do you want to solve Multiplication,  
Division, Addition, or Subtraction  
problems (M/D/A/S)?

Type the first letter of your preferred problem and press the RETURN key. For example, type M and press the RETURN key to choose multiplication problems.

Next, the program asks you for your preferred level of difficulty. The prompt is:

WHAT LEVEL OF DIFFICULTY?  
1-EASIEST 5-HARDEST (5 is suggested.)

The program suggests level 5 for starters because this level poses problems most people are accustomed to answering. For example, level 5 contains multiplication problems up to about 12 x 12, the point to which most students memorize their times tables. You can use



this example as a reference point for choosing more or less difficult problems. Type your number and press the RETURN key.

Next, the computer asks you for a time limit for answering each problem. The prompt is:

WHAT TIME LIMIT LEVEL?  
(1-Easiest 15-Hardest)

The time limit for level 1 is 35 1/2 seconds and for level 15 is 2 1/2 seconds. Type the number you want and press the RETURN key.

Then the computer displays each player's symbol (X and O) briefly at the bottom of the screen. Player one uses X's and player two uses O's.

## PLAYING MATHEMATIC-TAC-TOE

### THE GAME GRID

After answering these five questions, the computer places a number in each square of the tic-tac-toe grid. It now looks approximately like this:

1	⋮	2	⋮	3
-----				
4	⋮	5	⋮	6
-----				
7	⋮	8	⋮	9
	⋮		⋮	

Figure 2 Numbered Game Grid

### TAKING A TURN

The object of the game is to place your symbol (X or O) on three consecutive squares before your opponent does. You can place them in a row, for example, in squares 1, 2, and 3. Figure 3 shows this completed row.

X	⋮	X	⋮	X
-----				
4	⋮	5	⋮	6
-----				
7	⋮	8	⋮	9
	⋮		⋮	

Figure 3 Completed Row

Or, you can place them in a column, for example, in squares 2, 5, and 8. Or, you can place them diagonally, for example, in squares 3, 5, and 7.

The computer asks you, by name, what square you want. Type the number of the square you want to occupy and press the RETURN key. (Note. Don't try to be sneaky and type in the number of a square already having an X or O. If you try it or if you try typing a number other than 1 through 9, the computer will politely and persistently ask you to choose a legal square.)

After you choose your square, the computer displays a math problem in standard (school) form for you to solve. Depending on the time limit you chose, you have between 2 and 36 seconds to type your answer (and press the RETURN key). As you type in the answer, each

digit appears in its correct column, that is, lined up in the one's column, the ten's column, or the hundred's column. The computer recognizes only keys 0 through 9, RETURN, and DELETE/BACK S (which you can use to correct an answer prior to pressing the RETURN key). If you answer correctly, the message CORRECT! displays and the computer places your symbol in your chosen square. If you answer incorrectly, the message WRONG. displays and the square remains unchanged. If you don't answer within the time limit, a buzzer sounds and the message TIME'S UP! displays. After one of these responses, it's your opponent's turn.

If you think you get asked all the tough problems and your opponent gets all the easy ones, better luck next time. Your opponent might think just the reverse!

The first player to complete a line in any direction wins the round. The message CONGRATULATIONS! displays next to the player's name. If you and your opponent fill all the squares without either one completing a line, then the message "Sorry, it's a STALEMATE!" displays instead.

## RESTARTING THE GAME AND PLAYING ANOTHER ROUND

### Interrupting a game

If you want to interrupt a game and start over for any reason, press the SYSTEM RESET key, type RUN, and press the RETURN key. The program title will redisplay and you can re-enter your game options.

### Playing another round

To play another round after completing one, press any key other than the SHIFT, CTRL, or BREAK keys. The program asks you "DO YOU WANT TO KEEP THE SAME NAMES? (Y/N)". Press the "Y" key to play again using the same player names; press the "N" key to enter new names in response to program prompts.

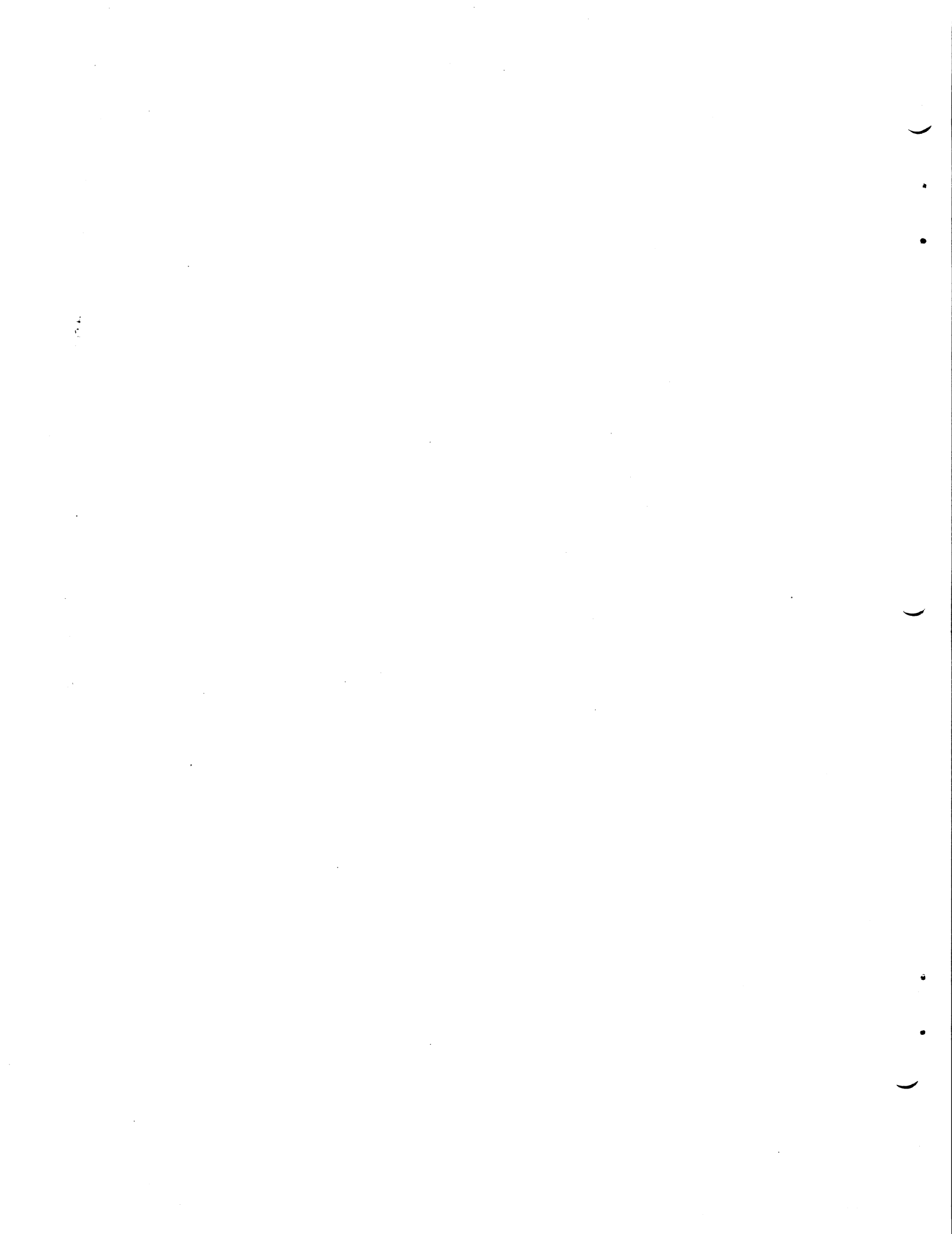
Then the program asks "WOULD YOU LIKE THE SAME SETUP? (Y/N)". The "setup" includes the arithmetic operation (addition, subtraction, multiplication, or division), the level of difficulty, and the time limit. Press the "Y" key to play again using the same setup; press the "N" key to enter new options in response to program prompts. The game grid then redisplay and you're ready to play another round.

## PROBLEMS USING MATHEMATIC-TAC-TOE

You might accidentally type something the program won't accept. For example, you might accidentally press the **BREAK** key causing the program to stop at some points. If you do so, type **POKE 752,1:CONT** and press the **RETURN** key to continue or restart the game. (This statement prevents the distracting cursor from appearing when the program continues.)

## COMMENTS FROM THE AUTHOR

The goal of **MATHEMATIC-TAC-TOE** is to drill and sharpen the math skills of individuals while having fun. It was originally intended for classroom use. (An earlier, less sophisticated version of my game was used successfully at my high school.) While talking one day to a parent about the program, she enthusiastically told me she'd love to buy the program for her kids. They'd play it for fun, she said, but she'd feel at ease knowing they were also learning something. So, whether you're using **MATHEMATIC-TAC-TOE** at home or in the classroom, have a good time!



**Limited Warranty on Media and Hardware Accessories.** Atari, Inc. ("Atari") warrants to the original consumer purchaser that the media on which APX Computer Programs are recorded and any hardware accessories sold by APX shall be free from defects in material or workmanship for a period of thirty (30) days from the date of purchase. If you discover such a defect within the 30-day period, call APX for a return authorization number, and then return the product to APX along with proof of purchase date. We will repair or replace the product at our option. If you ship an APX product for in-warranty service, we suggest you package it securely with the problem indicated in writing and insure it for value, as Atari assumes no liability for loss or damage incurred during shipment.

This warranty shall not apply if the APX product has been damaged by accident, unreasonable use, use with any non-ATARI products, unauthorized service, or by other causes unrelated to defective materials or workmanship.

Any applicable implied warranties, including warranties of merchantability and fitness for a particular purpose, are also limited to thirty (30) days from the date of purchase. Consequential or incidental damages resulting from a breach of any applicable express or implied warranties are hereby excluded.

The provisions of the foregoing warranty are valid in the U.S. only. This warranty gives you specific legal rights and you may also have other rights which vary from state to state. Some states do not allow limitations on how long an implied warranty lasts, and/or do not allow the exclusion of incidental or consequential damages, so the above limitations and exclusions may not apply to you.

**Disclaimer of Warranty on APX Computer Programs.** Most APX Computer Programs have been written by people not employed by Atari. The programs we select for APX offer something of value that we want to make available to ATARI Home Computer owners. In order to economically offer these programs to the widest number of people, APX Computer Programs are not rigorously tested by Atari and are sold on an "as is" basis without warranty of any kind. Any statements concerning the capabilities or utility of APX Computer Programs are not to be construed as express or implied warranties.

Atari shall have no liability or responsibility to the original consumer purchaser or any other person or entity with respect to any claim, loss, liability, or damage caused or alleged to be caused directly or indirectly by APX Computer Programs. This disclaimer includes, but is not limited to, any interruption of services, loss of business or anticipatory profits, and/or incidental or consequential damages resulting from the purchase, use, or operation of APX Computer Programs.

Some states do not allow the limitation or exclusion of implied warranties or of incidental or consequential damages, so the above limitations or exclusions concerning APX Computer Programs may not apply to you.

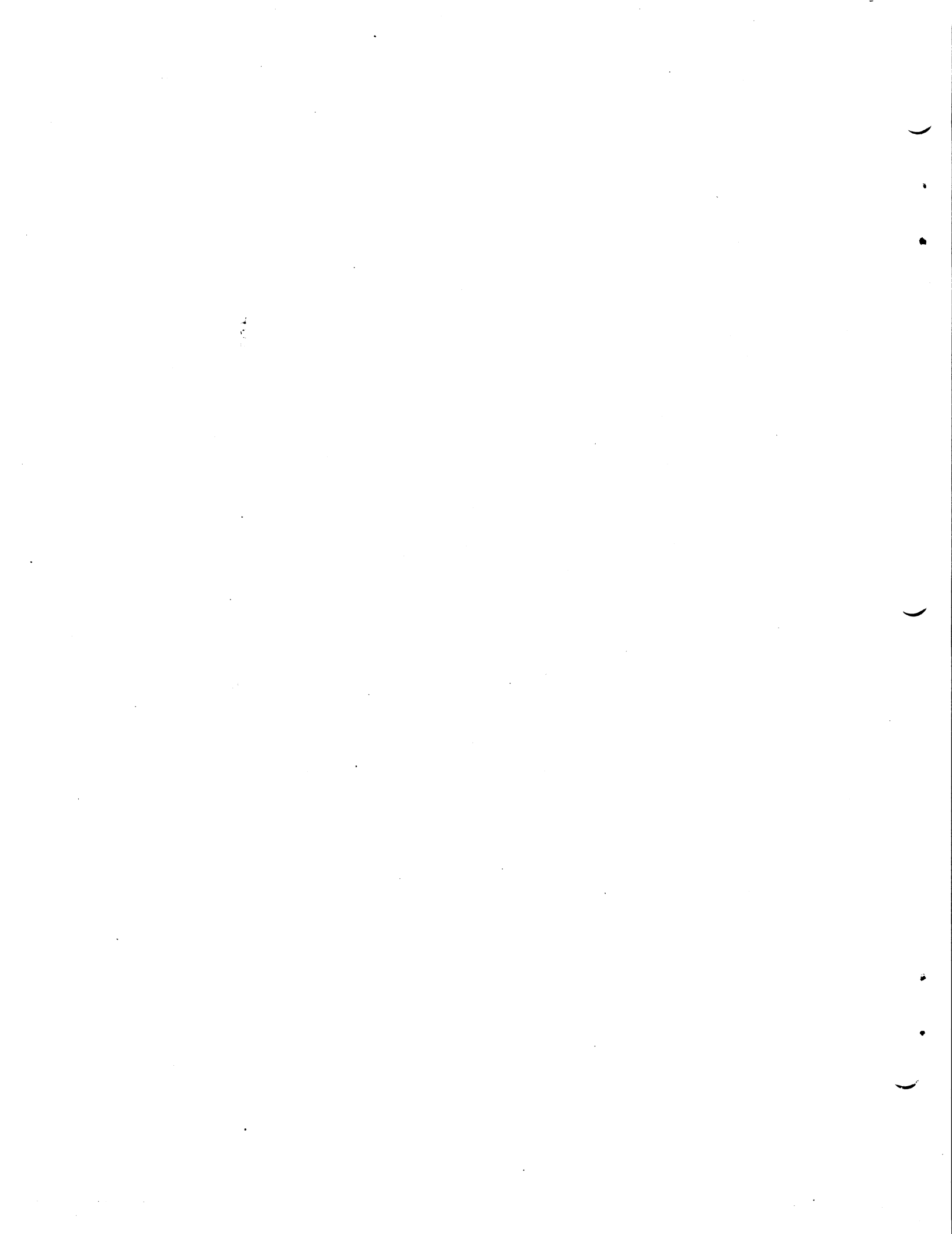
---

---

**For the complete list of current  
APX programs, ask your ATARI retailer  
for the APX Product Catalog**

---

---





P.O. Box 3705  
Santa Clara, CA 95055

## Review Form

We're interested in your experiences with APX programs and documentation, both favorable and unfavorable. Many of our authors are eager to improve their programs if they know what you want. And, of course, we want to know about any bugs that slipped by us, so that the author can fix them. We also want to know whether our

instructions are meeting your needs. You are our best source for suggesting improvements! Please help us by taking a moment to fill in this review sheet. Fold the sheet in thirds and seal it so that the address on the bottom of the back becomes the envelope front. Thank you for helping us!

1. Name and APX number of program.

---

---

2. If you have problems using the program, please describe them here.

---

---

---

3. What do you especially like about this program?

---

---

---

4. What do you think the program's weaknesses are?

---

---

---

5. How can the catalog description be more accurate or comprehensive?

---

---

6. On a scale of 1 to 10, 1 being "poor" and 10 being "excellent", please rate the following aspects of this program:

- \_\_\_\_\_ Easy to use
- \_\_\_\_\_ User-oriented (e.g., menus, prompts, clear language)
- \_\_\_\_\_ Enjoyable
- \_\_\_\_\_ Self-instructive
- \_\_\_\_\_ Useful (non-game programs)
- \_\_\_\_\_ Imaginative graphics and sound



7. Describe any technical errors you found in the user instructions (please give page numbers).

---

---

---

8. What did you especially like about the user instructions?

---

---

---

9. What revisions or additions would improve these instructions?

---

---

---

10. On a scale of 1 to 10, 1 representing "poor" and 10 representing "excellent", how would you rate the user instructions and why?

---

---

11. Other comments about the program or user instructions:

---

---

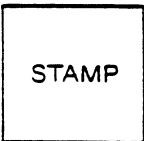
---

From

---

---

---



ATARI Program Exchange  
P.O. Box 3705  
Santa Clara, CA 95055

{seal here}