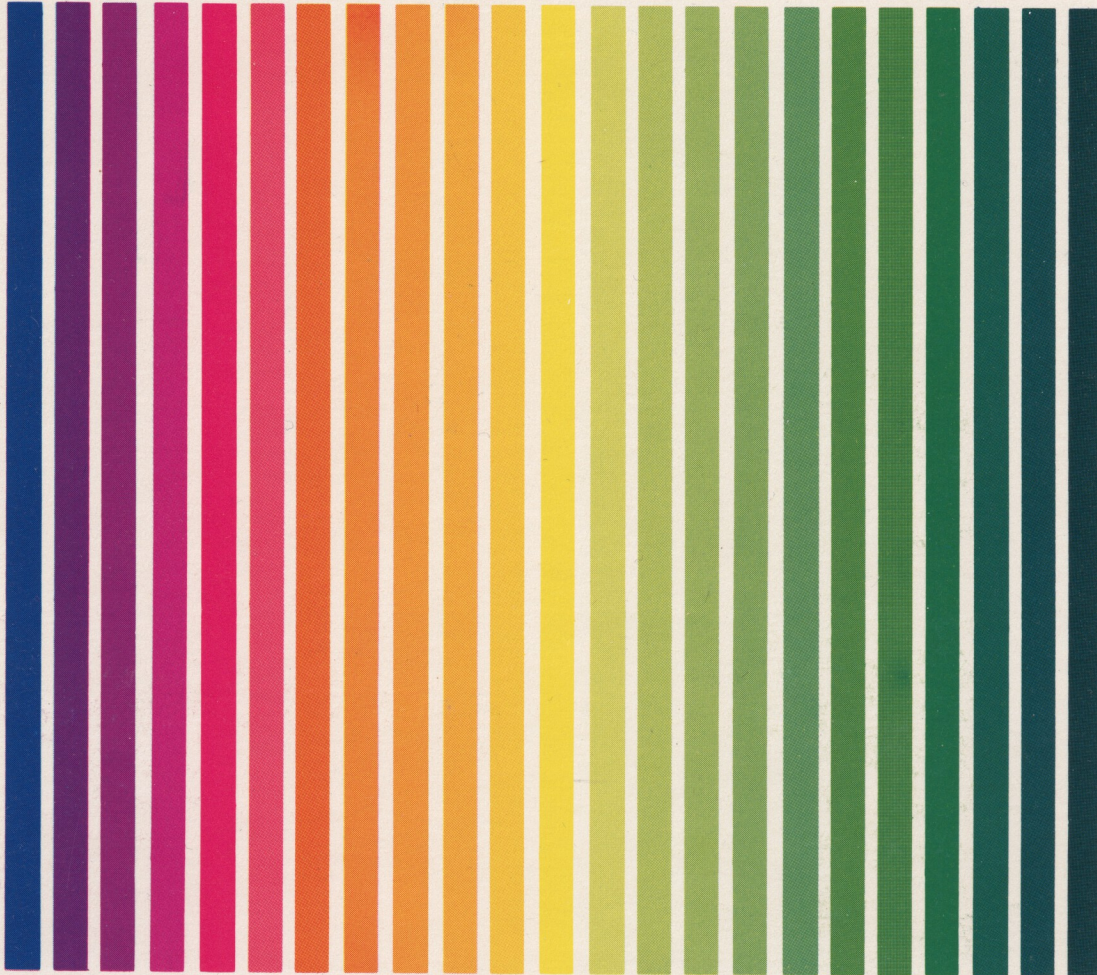


# APX ATARI® PROGRAM EXCHANGE



Lee Actor

## **JUKEBOX #1**

Eight classical music selections (ages 6 and up)

Diskette: 32K (APX-20135)  
Edition B Version 1

User-Written Software for ATARI Home Computers

Lee Actor

# **JUKEBOX #1**

Eight classical music selections (ages 6 and up)

Edition B Diskette: 32K (APX-20135)  
Version 1



JUKEBOX #1

by

Lee Actor

Program and Manual Contents © 1982 Lee Actor

Copyright notice. On receipt of this computer program and associated documentation (the software), the author grants you a nonexclusive license to execute the enclosed software. This software is copyrighted. You are prohibited from reproducing, translating, or distributing this software in any unauthorized manner.

### **Distributed By**

The ATARI Program Exchange  
P.O. Box 3705  
Santa Clara, CA 95055

To request an APX Product Catalog, write to the address above, or call toll-free:

800/538-1862 (outside California)

800/672-1850 (within California)

Or call our Sales number, 408/727-5603

### **Trademarks of Atari**

The following are trademarks of Atari, Inc.

ATARI®

ATARI 400™ Home Computer

ATARI 800™ Home Computer

ATARI 410™ Program Recorder

ATARI 810™ Disk Drive

ATARI 820™ 40-Column Printer

ATARI 822™ Thermal Printer

ATARI 825™ 80-Column Printer

ATARI 830™ Acoustic Modem

ATARI 850™ Interface Module

Printed in U.S.A.

## INTRODUCTION

### OVERVIEW

Now you can turn your ATARI Home Computer into a jukebox (no quarters required). With JUKEBOX #1 you have a selection of eight high quality "light classics". The music was developed with the help of ADVANCED MUSICSYSTEM (APX-20100), but cannot be modified with that program due to space saving measures taken by the author. You can easily make your selection from the screen display. JUKEBOX #1 will also select and play the pieces automatically. As you hear a selection, you also see it performed on a piano keyboard with four voices represented by colored keys. For additional fun, use the ATARI Paddle Controllers to change the tempo of the piece while it's playing.

### REQUIRED ACCESSORIES

ATARI BASIC Language Cartridge  
32K RAM  
ATARI 810 Disk Drive

### OPTIONAL ACCESSORIES

A set of ATARI Paddle Controllers

### CONTACTING THE AUTHOR

Users wishing to contact the author about JUKEBOX #1 may write or call:

3345 San Marino Avenue  
San Jose, CA 95127

(408) 251-7624

## GETTING STARTED

### LOADING JUKEBOX #1 INTO COMPUTER MEMORY

1. Insert the ATARI BASIC Language Cartridge in the cartridge slot of your computer.
2. Plug your Paddle Controllers, if applicable, into the controller jack of your computer console.
3. Turn on your disk drive. (Use disk drive one if you have more than one drive.)
4. When the BUSY light goes out, open the disk drive door and insert the JUKEBOX #1 diskette with the label in the lower right-hand corner nearest to you.
5. Turn on your computer and TV set.
6. The program will automatically load into computer memory.

### THE FIRST DISPLAY SCREEN

After the program loads, the screen displays a menu of song titles with a cursor automatically cycling through the selections.

## USING JUKEBOX #1

### OPERATION

Press the SELECT button to move from one highlighted music title in the menu to the next, or hold down the SELECT button for continuous movement. To direct JUKEBOX #1 to load the highlighted piece into computer memory, press the START button. The piece then loads from diskette and plays. To interrupt the playing of a piece, press the OPTION button and you'll return immediately to the menu screen. At the end of a piece, you also return to the menu screen. For fully automatic operation, press SELECT until AUTOMATIC PLAY is highlighted and then press START. The pieces will load and play in sequence. To return to manual operation, press OPTION while a piece is playing.

Note: When you reselect the most recently played piece, JUKEBOX #1 will not to reload it. This feature allows you to replay a selection without delay or unnecessary wear on your disk drive.

### CHANGING THE TEMPO

Use the Paddle Controllers to change the tempo while a piece is playing. While pressing the controller button, turn a Paddle clockwise to speed up the tempo and counter-clockwise to slow it down. The right Paddle controls large jumps in speed, and the left Paddle controls fine tuning.

### MUSICAL SELECTIONS

1. Overture to the Nutcracker, by Tchaikovsky. This piece is the opening number of the Nutcracker ballet.
2. Flight of the Bumblebee, by Rimsky-Korsakov. This piece is from the opera "Tsar Saltan".
3. Air on the G-string, by J.S. Bach. This piece is the second movement of Bach's Third Orchestral Suite in D.
4. Quartet in Eb, K.428, by Mozart. This piece is the first movement of the quartet.
5. Brandenburg Concerto #5 in D, by J.S. Bach. This piece is approximately the last third of the first movement of the concerto, from the harpsichord cadenza.
6. Well-Tempered Clavier, Book I #5, by J.S. Bach. This piece is the Prelude and Fugue in D.
7. Fur Elise, by Beethoven. This piece is the Bagatelle in A minor, for piano.
8. Fugue in C minor, by J.S. Bach. This piece is from the Fantasia and Fugue in C minor, for organ.



✓

.

.

✓

.

.

✓

**Limited Warranty on Media and Hardware Accessories.** Atari, Inc. ("Atari") warrants to the original consumer purchaser that the media on which APX Computer Programs are recorded and any hardware accessories sold by APX shall be free from defects in material or workmanship for a period of thirty (30) days from the date of purchase. If you discover such a defect within the 30-day period, call APX for a return authorization number, and then return the product to APX along with proof of purchase date. We will repair or replace the product at our option. If you ship an APX product for in-warranty service, we suggest you package it securely with the problem indicated in writing and insure it for value, as Atari assumes no liability for loss or damage incurred during shipment.

This warranty shall not apply if the APX product has been damaged by accident, unreasonable use, use with any non-ATARI products, unauthorized service, or by other causes unrelated to defective materials or workmanship.

Any applicable implied warranties, including warranties of merchantability and fitness for a particular purpose, are also limited to thirty (30) days from the date of purchase. Consequential or incidental damages resulting from a breach of any applicable express or implied warranties are hereby excluded.

The provisions of the foregoing warranty are valid in the U.S. only. This warranty gives you specific legal rights and you may also have other rights which vary from state to state. Some states do not allow limitations on how long an implied warranty lasts, and/or do not allow the exclusion of incidental or consequential damages, so the above limitations and exclusions may not apply to you.

**Disclaimer of Warranty on APX Computer Programs.** Most APX Computer Programs have been written by people not employed by Atari. The programs we select for APX offer something of value that we want to make available to ATARI Home Computer owners. In order to economically offer these programs to the widest number of people, APX Computer Programs are not rigorously tested by Atari and are sold on an "as is" basis without warranty of any kind. Any statements concerning the capabilities or utility of APX Computer Programs are not to be construed as express or implied warranties.

Atari shall have no liability or responsibility to the original consumer purchaser or any other person or entity with respect to any claim, loss, liability, or damage caused or alleged to be caused directly or indirectly by APX Computer Programs. This disclaimer includes, but is not limited to, any interruption of services, loss of business or anticipatory profits, and/or incidental or consequential damages resulting from the purchase, use, or operation of APX Computer Programs.

Some states do not allow the limitation or exclusion of implied warranties or of incidental or consequential damages, so the above limitations or exclusions concerning APX Computer Programs may not apply to you.

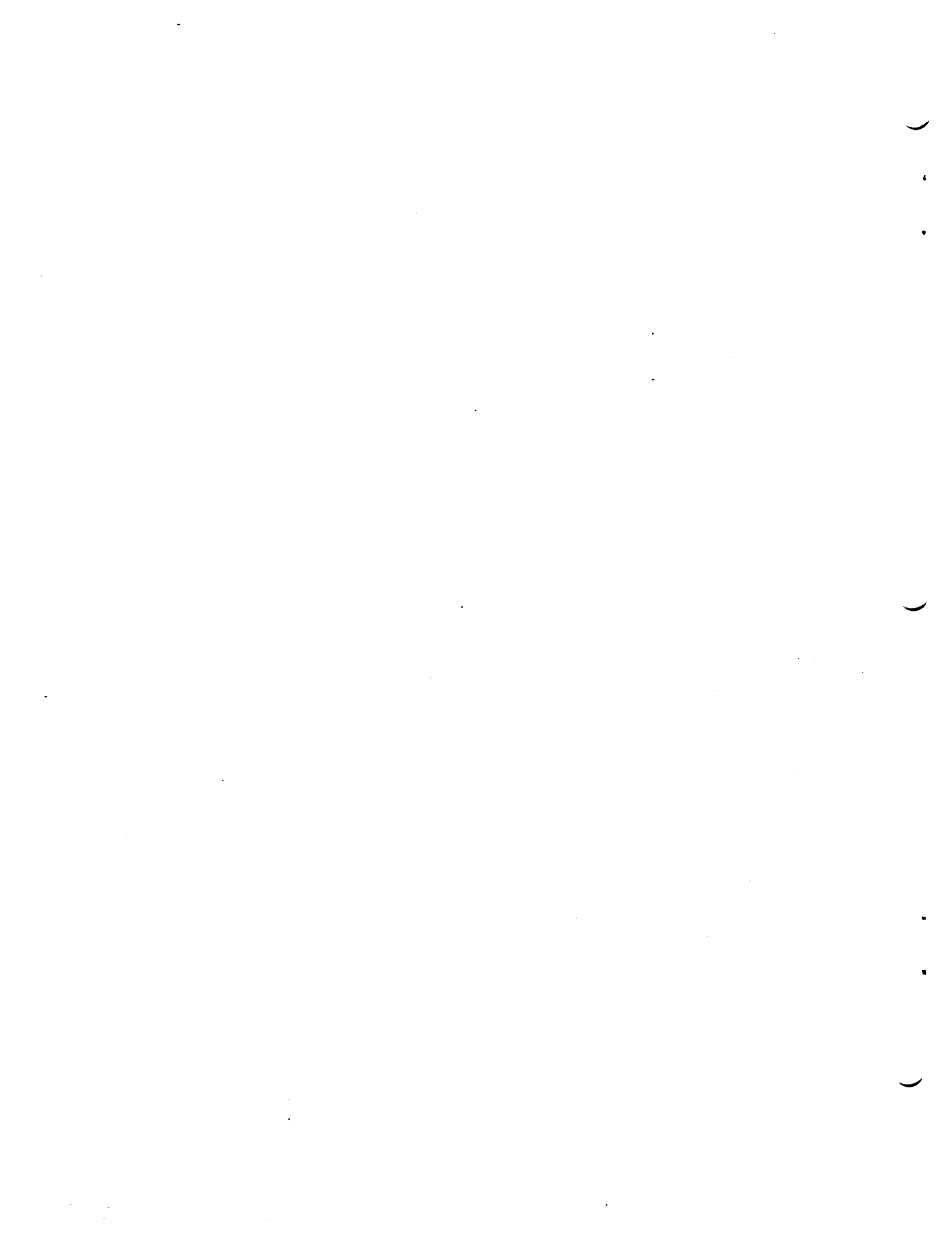
---

---

**For the complete list of current  
APX programs, ask your ATARI retailer  
for the APX Product Catalog**

---

---





P.O. Box 3705  
Santa Clara, CA 95055

## Review Form

We're interested in your experiences with APX programs and documentation, both favorable and unfavorable. Many of our authors are eager to improve their programs if they know what you want. And, of course, we want to know about any bugs that slipped by us, so that the author can fix them. We also want to know whether our

instructions are meeting your needs. You are our best source for suggesting improvements! Please help us by taking a moment to fill in this review sheet. Fold the sheet in thirds and seal it so that the address on the bottom of the back becomes the envelope front. Thank you for helping us!

1. Name and APX number of program.

---

---

2. If you have problems using the program, please describe them here.

---

---

---

3. What do you especially like about this program?

---

---

---

4. What do you think the program's weaknesses are?

---

---

---

5. How can the catalog description be more accurate or comprehensive?

---

---

6. On a scale of 1 to 10, 1 being "poor" and 10 being "excellent", please rate the following aspects of this program:

- \_\_\_\_\_ Easy to use
- \_\_\_\_\_ User-oriented (e.g., menus, prompts, clear language)
- \_\_\_\_\_ Enjoyable
- \_\_\_\_\_ Self-instructive
- \_\_\_\_\_ Useful (non-game programs)
- \_\_\_\_\_ Imaginative graphics and sound

7. Describe any technical errors you found in the user instructions (please give page numbers).

---

---

---

8. What did you especially like about the user instructions?

---

---

---

9. What revisions or additions would improve these instructions?

---

---

---

10. On a scale of 1 to 10, 1 representing "poor" and 10 representing "excellent", how would you rate the user instructions and why?

---

---

11. Other comments about the program or user instructions:

---

---

---

From

---

---

---

STAMP

ATARI Program Exchange  
P.O. Box 3705  
Santa Clara, CA 95055

{seal here}