

APX publishes programs in
these categories:

Systems/Telecommunications

Home Management

Personal Development

Entertainment

Learning

FINGERSPELLING

PERSONAL DEVELOPMENT

Practice letter and word fingerspelling
(ages 4 and up)

by Dewey Garton

Requires: ATARI BASIC Language Cartridge

Cassette version (1):
(APX-10197)

ATARI 410 Program Recorder
16K RAM

Diskette version (1):
(APX-20197)

ATARI 810 Disk Drive
24K RAM

Edition B

CONSUMER-WRITTEN PROGRAMS FOR

ATARI®

H O M E C O M P U T E R S

APX

ATARI Program Exchange

FINGERSPELLING

PERSONAL DEVELOPMENT

Practice letter and word fingerspelling
(ages 4 and up)

by Dewey Garton

Requires: ATARI BASIC Language Cartridge

Cassette version (1): (APX-10197)	ATARI 410 Program Recorder 16K RAM
--------------------------------------	---------------------------------------

Diskette version (1): (APX-20197)	ATARI 810 Disk Drive 24K RAM
--------------------------------------	---------------------------------

Edition B

)

.

.

)

.

.

)

FINGERSPELLING

by

Dewey T. Garton

Program and manual contents © 1982 Dewey T. Garton

Copyright notice. On receipt of this computer program and associated documentation (the software), the author grants you a nonexclusive license to execute the enclosed software. This software is copyrighted. You are prohibited from reproducing, translating, or distributing this software in any unauthorized manner.

Distributed By

The ATARI Program Exchange
P.O. Box 3705
Santa Clara, CA 95055

To request an APX Product Catalog, write to the address above, or call toll-free:

800/538-1862 (outside California)

800/672-1850 (within California)

Or call our Sales number, 408/727-5603

Trademarks of Atari

ATARI is a registered trademark of Atari, Inc. The following are trademarks of Atari, Inc: 400, 410, 800, 810, 820, 822, 825, 830, 850, 1200XL.

Limited Warranty on Media and Hardware Accessories. Atari, Inc. ("Atari") warrants to the original consumer purchaser that the media on which APX Computer Programs are recorded and any hardware accessories sold by APX shall be free from defects in material or workmanship for a period of thirty (30) days from the date of purchase. If you discover such a defect within the 30-day period, call APX for a return authorization number, and then return the product to APX along with proof of purchase date. We will repair or replace the product at our option. If you ship an APX product for in-warranty service, we suggest you package it securely with the problem indicated in writing and insure it for value, as Atari assumes no liability for loss or damage incurred during shipment.

This warranty shall not apply if the APX product has been damaged by accident, unreasonable use, use with any non-ATARI products, unauthorized service, or by other causes unrelated to defective materials or workmanship.

Any applicable implied warranties, including warranties of merchantability and fitness for a particular purpose, are also limited to thirty (30) days from the date of purchase. Consequential or incidental damages resulting from a breach of any applicable express or implied warranties are hereby excluded.

The provisions of the foregoing warranty are valid in the U.S. only. This warranty gives you specific legal rights and you may also have other rights which vary from state to state. Some states do not allow limitations on how long an implied warranty lasts, and/or do not allow the exclusion of incidental or consequential damages, so the above limitations and exclusions may not apply to you.

Disclaimer of Warranty on APX Computer Programs. Most APX Computer Programs have been written by people not employed by Atari. The programs we select for APX offer something of value that we want to make available to ATARI Home Computer owners. In order to economically offer these programs to the widest number of people, APX Computer Programs are not rigorously tested by Atari and are sold on an "as is" basis without warranty of any kind. Any statements concerning the capabilities or utility of APX Computer Programs are not to be construed as express or implied warranties.

Atari shall have no liability or responsibility to the original consumer purchaser or any other person or entity with respect to any claim, loss, liability, or damage caused or alleged to be caused directly or indirectly by APX Computer Programs. This disclaimer includes, but is not limited to, any interruption of services, loss of business or anticipatory profits, and/or incidental or consequential damages resulting from the purchase, use, or operation of APX Computer Programs.

Some states do not allow the limitation or exclusion of implied warranties or of incidental or consequential damages, so the above limitations or exclusions concerning APX Computer Programs may not apply to you.

Table of contents

Introduction...1

 Overview...1

 Required accessories...1

 Contacting the author...2

Getting started...3

 Loading FINGERSPELLING into computer memory...3

 The first display screen...4

Using FINGERSPELLING...5

 Program activities display screen...5

 Option 1: Show me letters...5

 Option 2: Show me words...6

 Option 3: Test with letters...7

 Option 4: Test with words...8

 Option 5: How am I doing?...13

Quick reference sheet...14

Figures

 Figure 1 First display screen...4

 Figure 2 Program activities display screen...5

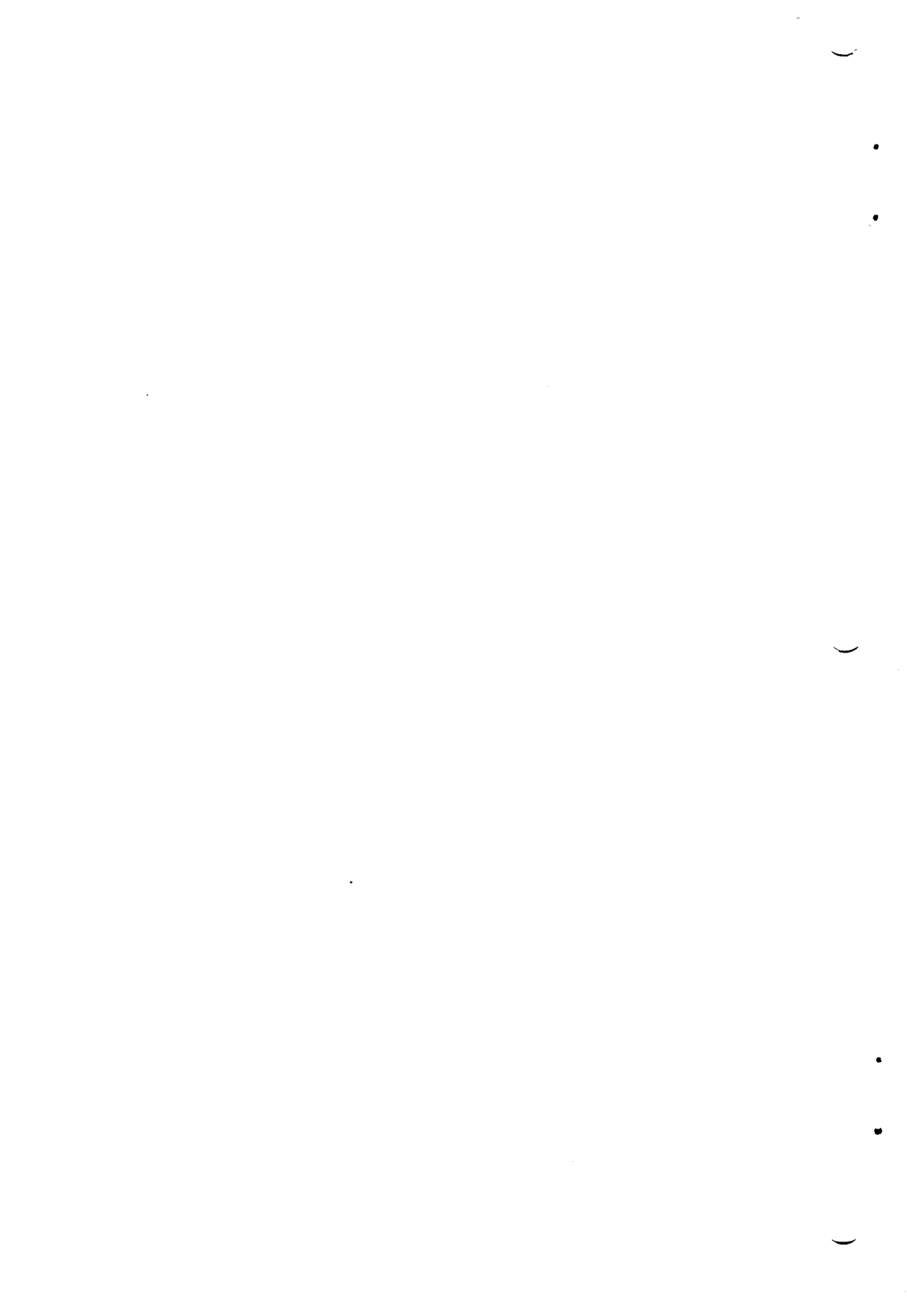
 Figure 3 Speed levels...6

 Figure 4 Test with letters...7

 Figure 5 Difficulty levels...8

 Figure 6 Test scores...13

 Figure 7 Fingerspelling the alphabet...14



Introduction

OVERVIEW

This program helps you learn the art of fingerspelling, or speaking with your hands. Most people learn to fingerspell the A B C's to communicate with the deaf, but others use this alphabet to communicate when scuba diving, riding a motorcycle, or working in a noisy environment. Just for fun, kids can learn it to have a private language of their own.

The program has two parts that you can choose with a keystroke. The first, called "Show me", allows you to type letters or words to see what they look like when they're fingerspelled. The letters display beside the hand image for reinforcement.

In "Test me", you practice reading letters or words. The program displays the hand image of a letter it chooses at random, and you type the corresponding letter on the keyboard. When you practice with words, the program asks you if you want easy, medium, or hard words, and how fast you want the hand images to display. After the program finishes fingerspelling the word, you type it on the keyboard.

The program keeps track of how many letters and words you identify correctly. You can check your progress by looking at a tally of your scores any time you like.

REQUIRED ACCESSORIES

ATARI BASIC Language Cartridge

Cassette version

16K RAM

ATARI 410 Program Recorder

Diskette version

24K RAM

ATARI 810 Disk Drive

CONTACTING THE AUTHOR

Users wishing to contact the author may write to him at:

5708 Wooded Acres Drive
Knoxville, TN 37921

Getting started

LOADING FINGERSPELLING INTO COMPUTER MEMORY

1. Insert the ATARI BASIC Language Cartridge in the cartridge slot of your computer.

2. If you have the cassette version of FINGERSPELLING:

a. Connect your program recorder to the computer and to a wall outlet.

b. Have your computer turned off.

c. Slide the FINGERSPELLING cassette into the program recorder's cassette holder and press REWIND on the recorder until the tape rewinds completely. Then press PLAY to prepare the program recorder for loading the program.

d. Turn on the computer while holding down the START key. When you hear a beep, release the START key and press the RETURN key. The program will load into computer memory and start automatically.

e. After the tape finishes loading, the word READY displays on your TV screen. Type RUN and press the RETURN key. The program's first display screen appears (Figure 1, below) on your TV screen. The message "Press RETURN to load data" displays. Follow the instructions to press the RETURN key.

If you have the diskette version of FINGERSPELLING:

a. Have your computer turned OFF.

b. Turn on your disk drive.

c. When the BUSY light goes out, open the disk drive door and insert the FINGERSPELLING diskette with the label in the lower right-hand corner nearest you. Close the door. (Use disk drive one if you have more than one drive.)

d. Turn on your computer and your TV set. The program

will load into computer memory and start automatically.

THE FIRST DISPLAY SCREEN

After the program has loaded into computer memory, the following screen displays:

```
FINGERSPELLING
TUTORIAL

VERSION 1.0 (c)1982
BY D T GARTON
```

Figure 1 First display screen

Using FINGERSPELLING

After the title screen, the program runs through a quick display of hand signals for the whole alphabet, while you hear the familiar nursery school alphabet jingle. Then the program activities display:

- 1 SHOW ME LETTERS
 - 2 SHOW ME WORDS

 - 3 TEST WITH LETTERS
 - 4 TEST WITH WORDS

 - 5 HOW AM I DOING?
- WHICH ONE?

Figure 2 Program activities display screen

PROGRAM ACTIVITIES DISPLAY SCREEN

When you choose one of the options, type the corresponding number. For example, to select letter displays (SHOW ME LETTERS), press 1.

An explanation of each program activity follows:

1 SHOW ME LETTERS

The following question displays:

SHOW WHAT LETTER?

Type a letter key to see the hand image for that letter. The image displays until you press another letter key. Keep typing letters to see what they look like.

Press START to return to the program activities screen.

2 SHOW ME WORDS

The following question displays:

SHOW WHAT WORD?

Type any word up to 10 letters long and press the RETURN key. If you make a mistake, press the DELETE/BACKSPACE key to erase letters before pressing the RETURN key.

Next, decide how fast you want the hand to fingerspell. The speeds are measured by animals, with the snail representing the slowest and the cheetah the fastest. Type the corresponding number, 0 being the snail and 9 being the cheetah, as in the following diagram:

SHOW YOU A WORD

AS FAST AS A	
0 SNAIL	5 GRIZZLY
1 TURTLE	6 RABBIT
2 PIG	7 COYOTE
3 TURKEY	8 GAZELLE
4 HUMAN	9 CHEETAH

WHICH ONE?

YOUR WORD?.....

Figure 3 Speed levels

The average speed for the hand image to fingerspell a word in this program is 5, (grizzly). But level 9 (cheetah) is easy for most deaf people who are used to fingerspelling.

After you watch the hand images fingerspell your word, you can request another one or press the START key to go to the program activities display.

3 TEST WITH LETTERS

Try this option after you've learned at least some of the letters. A hand image forming a letter appears on the screen next to a question mark as in the following diagram.

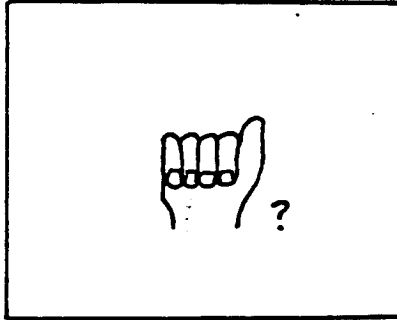


Figure 4 Test with letters

Type the key of the letter you think the image represents. If you're right, the program responds with a short beep and displays the letter beside the hand image.

If you're wrong, you hear a sound that gently registers a mistake. The screen turns red and displays the correct letter for a few seconds so you can study it.

The program is keeping score of your right answers. When you want to check your progress, press the START key to return to activity selections and then choose option 5.

4 TEST WITH WORDS

Try this test when you're ready for a challenge. First, decide whether you want to practice with easy, medium, or hard words. Choose one from the following display by typing 1, 2, or 3:

```
TEST WITH WORDS

DO YOU WANT

1>  EASY WORDS
2>  MEDIUM WORDS
3>  HARD WORDS

WHICH ONE?
```

Figure 5 Difficulty levels

"Easy" words have 3 to 5 letters, "medium" words 6 or 7, and "hard" words 8 to 10. The words are listed on the next page of this manual.

Next, decide how fast you want the hand images to fingerspell the words. The choices are represented by animals ranging from snail to cheetah. Type 0 to move at the snail's pace, and so on to 9 for the cheetah's speed, as you did in testing with letters.

Try to read the word that's fingerspelled on the screen, and type it after the following question displays.

```
WHAT WAS MY WORD?

TYPE MY WORD THEN
PRESS RETURN

?_____
```

If you're right, you hear an encouraging beep and you see the word "RIGHT". If you're wrong, you hear a gentle but unmistakable error tone. The screen turns red and displays the correct word.

The program keeps a record of how many you identify correctly, and you can check it any time. Press the START key to return to the activity selections, and then choose option 5, "How am I doing?"

Contents of word files

The following is a list of the words that are tested in option 4:

EASY word file:

ALARM	CLOCK	FRUIT
ANT	COLD	HELP
BLACK	COLOR	HORSE
BOAT	COUGH	HOT
BOOK	COW	HOUSE
BREAD	DESK	MAIL
BUS	DOG	MOUSE
CAR	FIRE	MUSIC
CAT	FIVE	NAIL
CLASS	FOUR	ONE

PAIN	SUNNY
PIZZA	TABLE
RADIO	TAXI
RAIN	THREE
RED	TRAIN
SEVEN	TWO
SIX	WARM
SMOKE	WASH
SOAP	WATER
STORM	WHITE

MEDIUM word file:

ACCOUNT	DEPOSIT	HIGHWAY
BANQUET	DINNER	KITCHEN
BICYCLE	DOCTOR	LAWYER
BROTHER	ELEVEN	MONKEY
BUFFET	ENGINE	MOTHER
BUMPER	FAMILY	MUFFLER
CEREAL	FATHER	NAPKIN
CHICKEN	FOLLOW	ORANGE
COLLEGE	FOREST	PEANUT
DENTIST	GIRAFFE	PENCIL

PICTURE	SUPPER
POLICE	TEACHER
POPCORN	TRAFFIC
PURPLE	TURKEY
RECORDS	TURTLE
PICTURE	TWELVE
SAVINGS	WASHER
SCHOOL	WEATHER
SISTER	WINDOW
SIXTEEN	YELLOW

HARD word file:

ACCIDENT	CONGRESS	HANDICAP
ADDITION	DIVISION	HELICOPTER
AMBULANCE	EARTHQUAKE	HOSPITAL
AUTOMOBILE	EIGHTEEN	HURRICANE
BIRTHDAY	ELEPHANT	LAWNMOWER
BREAKFAST	ELEVATOR	MAGAZINE
CALCULATOR	EXPLOSION	MICROWAVE
CHECKBOOK	GASOLINE	MOTORCYCLE
CHILDREN	GOVERNMENT	MULTIPLY
COMMUNITY	GOVERNOR	NEIGHBOR

NEWSPAPER	SUBTRACT
NOTEBOOK	SURPRISE
OPERATION	TELEPHONE
PAINTING	TELEVISION
PHONOGRAPH	TYPEWRITER
PHOTOGRAPH	UMBRELLA
PRESIDENT	VACATION
RAILROAD	VEGETABLES
SEVENTEEN	WASHINGTON
STAIRWAY	WHEELCHAIR

5 HOW AM I DOING?

This option shows your scores on 3)TEST WITH LETTERS and 4)TEST WITH WORDS. The screen display is divided into two parts. An example showing how you did identifying the letters A, E, F, G, H, J, L, and P is:

TEST WITH LETTERS SCORES

```
POOR)  A F
FAIR)  E
GOOD)  H J P
BEST)  G L
```

TEST WITH WORDS SCORES

LEVEL	#SHOWN	#RIGHT	PERCENT
5 EASY	6	2	33
5 HARD	6	0	0

PRESS START TO RUN AGAIN

Figure 6 Test scores

TEST WITH LETTERS SCORES tells you how well you did in the test lesson. You can have a rating of POOR, FAIR, GOOD, or BEST for any of the letters you tried to identify. A POOR rating means that you need to practice more on those letters. Letters beside the BEST rating are the ones you rarely missed. Only the letters you practiced appear in this display.

TEST WITH WORDS SCORES tells you how well you can read whole words that are fingerspelled. The program displays the level (speed and difficulty), the number of words shown in that category, the number you identified correctly, and the percentage of correct responses.

Press the START key to return to the activity selections.

Quick Reference Sheet

The following chart shows the hand images of all the letters.



Figure 7 Fingerspelling the alphabet



ATARI Program Exchange
P.O. Box 3705
Santa Clara, CA 95055

Review Form

We're interested in your experiences with APX programs and documentation, both favorable and unfavorable. Many of our authors are eager to improve their programs if they know what you want. And, of course, we want to know about any bugs that slipped by us, so that the author can fix them. We also want to

know whether our instructions are meeting your needs. You are our best source for suggesting improvements! Please help us by taking a moment to fill in this review sheet. Fold the sheet in thirds and seal it so that the address on the bottom of the back becomes the envelope front. Thank you for helping us!

1. Name and APX number of program.

2. If you have problems using the program, please describe them here.

3. What do you especially like about this program?

4. What do you think the program's weaknesses are?

5. How can the catalog description be more accurate or comprehensive?

6. On a scale of 1 to 10, 1 being "poor" and 10 being "excellent", please rate the following aspects of this program:

- _____ Easy to use
- _____ User-oriented (e.g., menus, prompts, clear language)
- _____ Enjoyable
- _____ Self-instructive
- _____ Use (non-game programs)
- _____ Imaginative graphics and sound

7. Describe any technical errors you found in the user instructions (please give page numbers).

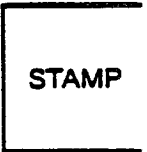
8. What did you especially like about the user instructions?

9. What revisions or additions would improve these instructions?

10. On a scale of 1 to 10, 1 representing "poor" and 10 representing "excellent", how would you rate the user instructions and why?

11. Other comments about the program or user instructions:

From



ATARI Program Exchange
P.O. Box 3705
Santa Clara, CA 95055

[seal here]