

A Database Publication

ATARI USER

Vol. 1 No. 5

September 1985

CI

8-PAGE SPECIAL

**Launch of
the 520ST**



**The great software
race is on!**

ALSO IN THIS ISSUE

Features on conditional loops, binary logic, display lists, graphics, screen dumps, Logo insights - plus an action-packed maze game

WELCOME TO ATARI MAGAZINE

(IF YOU'RE NOT YET AN



ATARI 800XL, 1050 Disk Drive,
Home File Manager, The Plotter,
Demonstration Software. ©1985 Atari (Normal Retail \$299.95)

The only way to make full use of ATARI USER is to become one. And the easiest way to do that is with ATARI Personal Computer Packs.

There isn't a better way to get into computers. There isn't a more comprehensive starter pack.

Only ATARI could give you a 64 Kram memory, cassette 'soundthrough' capabilities, a maximum of 256 colours on the screen at one time and 4 'sound' voices.

ATARI 800XL PERSONAL

COME ATARI USER MAGAZINE.

(ATARI USER, STOP HERE.)

A choice of a 1050 Disk Drive or a 1010 Cassette Programmer Recorder and additional software.

No one else could offer you all this power at these prices.

And, as everything comes together, you can make the most of the unbeatable ATARI 800XL straight away.

Without doubt, ATARI Personal Computer Packs are the easiest way to get into computers.

The only difficulty is deciding which one. Now read on.

PERSONAL COMPUTER PACKS



PACK 2: 800XL,
1050 Disk Drive, Programmer Recorder,
Expansion Kit, Programming, Publications,
Demonstration Software, £129.99 (Recommended £159.99)

ATARI USER

A SPECIAL SPECIAL
Launch of
the 588ST



Vol. 1 No. 5 September 1985

Managing Editor: **Derek Mackin**
Features Editor: **Giff McKeigh**

Editorial Team:
Mike Bibby
Alan McLachlan
Kevin Edwards
Pete Bibby

Technical Editor: **Arvid Wilby**
Production Editor: **Peter Oliver**
Layout Design: **Heather Stoddick**

News Editor: **Mike Crowley**
Advertising Manager: **John Billing**
Advertising Sales: **John Snowdon**
Editor in Chief: **Peter Oswald**

Editorial: 081-488 9335
Administration: 081-488 9382
Advertising: 081-488 9500
Subscriptions: 081-480 0173
Telex/Gate: 79 MA0001
Telex: 285871 MCMREP G
Catering Ref: 79 MA0001
Press Mailbox: 614569300

Published by:
Databases Publications Ltd,
Europe House, 88 Charter Road,
Hazel Grove, Stockport SK7 5RY.

Subscription rates for
12 issues, post free:

£12 - UK
£15 - Eire (Sterling only)
£20 - Rest of world (surface)
£40 - Rest of world (airmail)

"Atari User" welcomes program listings and articles for publication. Material should be typed on computer printed and preferably double-spaced. Program listings should be accompanied by cassette tape or disc. Please enclose a stamped, self-addressed envelope, otherwise the return of material cannot be guaranteed. Contributions accepted for publication by Databases Publications Ltd will be on an outright basis.

© 1985 Databases Publications Ltd. No material may be reproduced in whole or in part without written permission. While every care is taken, the publishers cannot be held legally responsible for any errors in articles, listings or advertisements.

"Atari User" is an independent publication and Atari Corp (UK) Ltd are not responsible for any of the articles in this issue or for any of the opinions expressed.

News line distribution:
Europe Sales and Distribution Limited, 11 Brighton Road, Crawley, West Sussex BN11 0BA. Tel: 0293 37083.

News

All the latest developments in the expanding world of Atari computing.

7

MicroLink

This month's update on news from Britain's electronic mail service.

11

Beginners

Mike Bibby's regular series continues to take the pain out of programming. This month he explains why some things are more equal than others.

12



Adventuring

Billing looks at the games which combine Scott Adams' adventures with Marvel comic characters and there's the solution to last month's brick-dropping problem.

16

Software

Fast arcade action with BoulderDash and Hijack, Action for the strategists and Warbringer for aspiring Post Office workers everywhere.

20

Graphics

Dave Russell's still working his way through the Atari graphics modes. This month Modes 4 and 6 receive his attention.

22

Utility

There's some clever tricks in Roland Weddlöve's Data Making routine.

24

Display List

Mike Rowe explains that it's not at all rude to use a Display List Interrupt.

26



Output

Dump those Mode 8 pictures to your Atari 1025 printer with the aid of Michael King's program.

48



We take a first look at the wealth of software now being developed for the 520ST - in our 8-page introduction to Atari's wonder machine.

29



Hardware

Mike Cook describes the extensive addressing modes of the powerful 68000 chip.

50

Game

Help Horace the Blob avoid the Maze Monsters in this fast-action version of the arcade classic.

38



Logo

Derek Radburn stresses the list processing properties of Logo.

54

Mailbag

Four pages of your letters - the means, the praise, the questions, they're all here.

55

Bit Wise

If you thought ECR was something to do with Wanda the Pooh, you'd better read Mike Gibby's series on binary operations.

42

Order Form

Binders for your back issues, disc doubles, dust covers for your micro and a free T-shirt for all new subscribers.

60

THE
NEW

ATARI 520ST NOW AVAILABLE!

Now In Stock!



only

£749.99

DISKS

30" DS/DD £4.99
30" DS/DD £5.99
30" HE ADAPTER £14.99
ALL MAKES IN STOCK

SOFTWARE

HABA CHECK KEEPER
Personal Finance Program
HABA COM
Communication Software
HABA HPPD '12'
Personal '12' Calendar
HABA CALC
&
HABA WORD
Country Quizzes
Call for more Software

THE ATARI 520ST

COMPUTER SYSTEM
COMES COMPLETE WITH
30" 500K DISK DRIVE
HIBES MONOCHROME MONITOR
MOUSE, TOS, BIOS, LOGO
BASIC, GEM WRITE, GEM DRAW
GEM DISK TOP, DEMO

520ST LEADS

520ST to Certronics
Printer . . . £24.99
MIDI to MIDI LEADS
. £79.99
MOUSE EXTENSION LEADS
. £14.99
520ST to MODEM LEAD
. £19.99

TO ORDER YOUR 520ST WRITE OR PHONE TO

SOFTWARE EXPRESS INTERNATIONAL

21 STONEYHURST ROAD, BRIMINGTON, BRIMINGHAM
TELEPHONE: 0511 384 5080



TELEPHONE ORDERS NOW BEING TAKEN



'ST' HOTLINE (021) 384 5080

PLEASE NOTE: ALL ORDER BOOKS WITH EITHER CASH
PAYMENT OR DEPOSIT WILL NOT BE DESPATCHED UNTIL YOUR
ORDER IS FULLY PAID FOR IN FULL.

ATARI IS THE REG. TRADEMARK OF ATARI CORP. LTD.
ALL INFORMATION CORRECT AT TIME OF GOING TO PRESS

Tramiel pledges support for the whole range



Jack Tramiel... "our sales projections are high"

ON the eve of the consumer launch in the UK of the 5200X Atari chief Jack Tramiel has pledged continuing support for all the company's current machine range.

In an exclusive interview with Atari Man, the controversial former boss of Commodore insisted that the arrival of the 16 bit mice will not mark the beginning of the end for Atari's less powerful models.

"We intend to support all lines which Atari has manufactured and are selling", said Jack Tramiel.

"This includes the 5200X games machine, the 1300XL and 800XL computers, the ST line and all future machines".

Questioned about the number of 5200X Atari hopes to sell in the first 12 months, the outspoken head of the Atari clan replied: "Sales projections are high."

"We believe that any company which has smaller than 20 per cent share of the personal computer market will be out of

business in the long run".

Barring Jack - as he is known in the States - went on to deny claims that the ST was aimed primarily at the business market.

"Since I started in this business, I've always sold personal computers", he said. "People have the imagination to

do what they like with my products".

A suggestion made by a leading UK retailer that the 5200X was too cheap with not enough profit in it for dealers to provide the necessary back up also met with a similar rebuke.

"The profit margins we provide for retailers are comparable to any in the computer industry", he said.

Asked about stories circulating from the US that STs are already being sold before any software is available, he said: "Many people are buying it without software is because for every machine there are stages."

"In the first stage the program developers buy machines. In the second stage the computer enthusiasts and hobbyists buy the machines.

"Then, as software is developed, comes the third stage - the consumer buy".

What will follow the ST? "If you are in Las Vegas in November please visit our booth at Comdex. You will see quite a line of new products..."

Hard discs on the way

ATARI hard discs for the 5200X are to have a 10Mbyte capacity and will be available in the United States in October.

This was the message from Jack Tramiel when he spoke to Atari Man.

However he did point out that UK purchasers of the 5200X will have to wait until November for the British version to be made available.

DUTCH PICK THE 800XL

ATARI has achieved a dramatic breakthrough in Europe with the news that the Dutch government has selected the 800XL as its recommended edge for the country's schools.

The company now predicts that this will result in sales of 100,000 machines to educational outlets in Holland over the next two to three years.

Atari was given the blessing

of the Dutch after months of negotiations and in the face of intense competition from major rivals.

This is now being seen as the key to unlock the door to similar deals all over Europe. However France remains the one country where Atari is unlikely to make much headway, thanks to the chauvinistic attitude of the French themselves.

As part of the Dutch deal the

800XL - named as Home Computer of the Year in the British Micro Computing Awards 1985 - is now to be featured in a television series there.

Breakthrough

This, according to the company, is being designed to introduce school children in Holland to the intricacies of computing, similar to the

Spreadsheet released

DISC and cassette versions of Audlogics's spreadsheet Micro Swift are being released this month for the Atari 800XL and 1300XL.

The machine code program is operated by pop-up menus and incorporates advanced functions such as definable column widths and a selectable system of cell formatting.

Price will be around £20.

130XE DEAL

COMPUMART has stolen a march on other dealers by offering a cut-price package incorporating the Atari 1300XL.

The company is offering savings of £80 on its Atari package - consisting the 130XL, 1050 disc drive and ten blank discs - which now costs £299.95.

pioneering BBC series.

"This award is a major breakthrough for Atari computers in Holland", says Bob Harding, Atari UK sales manager. "It was won in the face of formidable competition from Philips, the indigenous manufacturer."

"We believe that this will lead to the 800XL becoming the leading 8-bit micro in education".

Games link with toys company

SOFTWARE house Mattel has joined forces with a toy manufacturer and comics publisher in developing its latest release for the Atari 8-bit machines.

In mid-October it will be launching *Zoids - The Battle Begins*, the first in a series of computer games based on a range of Zoid robot toys made by Tomy.

Both manufacturers are keeping in close touch with Marvel, which is bringing out a comic based on the Zoids' adventures.

Mattel says Tomy has orders from all over the world for its dinosaur-like robots -

sales of the toys have already reached the two-million mark in the UK.

Tomy is also planning to spend in excess of £1.5m on television advertising alone in the run-up to Christmas. Mattel is hoping its partner's promotions will help sales of its own game.

"Zoids have clearly captured the imagination of the same kids who buy computer games", said a spokesman for the company.

The *Battle Begins* is an arcade game which centres on the battle for supremacy between two warring factions of Zoids. Mattel says it involves a lot of strategy.



LASER DISC SYSTEM FOR ATARI

ATARI is set to become the first major manufacturer to introduce a laser-reading compact disc system in this country.

Spokesmen at Atari's headquarters in Sunnyvale, California, and at Siraugh have confirmed the product is under development and will be released before Christmas with

a price tag of about \$500 - under £800 at current exchange rates.

The CD-ROM player is based on a Philips drive unit and is designed to run with the Atari ST range.

It will be capable of storing 800 megabytes of memory on one 12 cm optical laser disc.

A spokesman told *Atari User*:

"We are also thinking of making it an audio product so it will double as an audio player".

A prototype reviewed in America recently, running with the ST, stored 20 volumes of an encyclopaedia on one-third of its capacity.

There was the full index of the encyclopaedia on another third and high quality graphics

related to the material on the other third.

It took approximately three seconds to locate any particular reference using laser scanning.

Drive units developed by Philips and disc and tape manufacturers 3M have been available to North American original equipment manufacturers for several months.

Royal Murphy, 3M's disc products manager in the UK, has said that CD data storage is "the technology that will substitute for all forms of recording made in 10 to 15 years time".

His company believes optical memory systems will take off within the next few years, with annual disc sales expected to reach half a billion by 1990.

The discs will be able to store a variety of information - standard computer data, graphics, digitised TV pictures and audio.

SOFTWARE IMPORTS FROM USA

DISTRIBUTOR Software Express is importing four utilities and five games for the Atari 8-bit range from the United States.

Homepack is a three-in-one package which includes word processor, information manager and telecommunications program. Price is £48.95.

A word processor called

Paper Clip will cost around £50. It enables the user to merge Touch Tables and other pictures with text and also to print out.

Bookend's Print Shop, price £40, enables users to create letterheads, greetings, messages, signs and displays. Extra Data Files cost £20.

Last in the utilities section is 8-Graph, a graphics construc-

tion program which allows bar or pie charts to be made.

The games are *Egypt's Illusion* on Pretelux and *Ballobates*, Boudonard's book-based *Blind Wheel* game for an Atari with twin drive, and Microprose's strategy war game, *Crusade in Europe*, and its *Great American Road Race*. Cost per program ranges from £30 to £45.

Micro Live returns to the screen

TELEVISION'S *Micro Live* series is returning to BBC 2 as a result of pressure from computer buffs.

Starting on October 13 the non-weekly series will cover subjects ranging from electronic music, music in schools, the Data Protection Act and the use of computers in timing races.

The basis for the personal computer market is to be featured in a serious film with a lightweight title, *Big Blue* and the 700 Desires.

Micro Live will also take an in-depth look at work being done by the Carnegie-Mellon University in the States on molecular membranes and robots, communications and networking.

These, together with other items still to be filmed, will take the series up to December 13 when it will take a break for Christmas. It will return for another 10 weeks starting on January 13.

The program's producers have also taken heed of the viewer's mailing by introducing more items on personal computers. But air time will also be given to the growing business and communications sectors.

Presenters of the program will be Lesley Judd, Ian McLaughlin-Davies and Fred Harris. *Micro Live* will go out on BBC 2 at 7.30pm each Friday.

Two-in-one cassette

A CASSETTE offering two versions of the same game - *Boulder Dash* - one for the Atari 48k and the other the Amstrad, has been launched by Miverson.

Said executive Pat Eison: "It makes sense for dealers to stock only one product catering for two machine markets.

"The two-in-one will not affect the customers who will still be getting the game for the normal £9.95."

Top team for 520ST launch

ATARI boss Jack Tramiel is to spearhead the consumer launch of the 520ST on the first day of the Personal Computer World Show on September 4.

The fact that he is to appear with his American entourage is being seen as a demonstration of the importance attached to the new machine's showing on the UK market.

It was because of this that the first ST machines were shipped to Britain some weeks ago, much to the irritation of would-be developers Stateside.

When questioned about this Tramiel said the decision had been made based on the overwhelming interest shown in the ST when it was unveiled at the Interware Show earlier this year.

"As an international marketing company we put emphasis

on all our markets, but especially Europe", Jack Tramiel told Atari User.

In recent weeks UK software houses, like their US counterparts, have been involved in a mad scramble to provide ST products ready for the consumer launch here.

Such has been the interest generated by the machine that most major British companies got caught up in the rush to actually buy ST development systems.

"We even had to wait in line to pay for one", bemoaned a spokesman for one company a little steep off the mark.

Programmers have been working round the clock in an attempt to beat the September deadline. Although many will only be showing "unfinished" products, more than 80 software houses will be featur-

ing their wares on the Atari stand at the PCW Show at London's Olympia.

"There has been nothing quite like it since the gold rush", said one industry observer. "It's as though Jack Tramiel had invited them all to the opening of the Klondike".

TOP VALUE

A REVIEWER in *Popular Computing Weekly* has described the as-yet-to-be-released Commodore Amiga as the main challenger to the Atari ST range.

However the writer, Andrew Pinfield, concludes that the ST is likely to score heavily on price - some £400 cheaper for the basic model, which includes a monitor when the Amiga does not - and the fact that it has more RAM.

Atari bridges the gap

ATARI owners have been invited to help fill a gap in our national heritage caused by the fires of Henry VIII and Oliver Cromwell.

Because of these and other incidents, there is no British history of Nativity art as there is in other European countries.

But that is something artists and historians Count and Countess Anselm von Stauffer intend to correct.

"They have organised the First British National Nativity Competition to put Britain alongside the other countries of the world who already have a longstanding tradition of Nativity-making. It coincides with the Twelfth World Congress of Nativists, which is hosted by a different country every three years and this year is in Innsbruck, Austria, in December.

The competition, in two

parts, will be held at Westminster Cathedral on December 8 and at the Christian Resources Exhibition at the Horticultural Halls in London on February 8.

Count and Countess von Stauffer have been working closely with their international counterparts for eight years, as well as with British craftspeople, artists, photographers and - during the past two years - computer graphics artists.

They have been helped by Epson UK, which was involved in the Christmas Archives Exhibition, Foto Nativitas at the World, at the Barbican Centre last winter.

The Epson connection with the National Nativity Competition is in the special category for the best computer-generated image of the Nativity.

Any part of the Christmas

story may be represented, and entries will be judged on originality, content and approach.

Epson will judge this section of the competition and award a prize to the winning computer artist.

"The winner in the computer category will also compete for the overall Best in Show trophy", Count von Stauffer told Atari User.

"And it is likely to be given a place in the British Nativity archives which will be going on tour to the United States and leading Commonwealth countries shortly."

Arted owners who want to enter the competition should write to National Nativists Competition, Christmas Archives, 84 Severn Road, Cardiff CF1 9EA, enclosing a 24p stamp.

ATARI

EUROPE'S LEADING
'ATARI'
MAIL ORDER
SPECIALISTS

SOFTWARE EXPRESS INTERNATIONAL

HARDWARE

130 KE COMPUTER 128K	189.00
1300E/1050 PACS including software	299.00
8008L/1050 PACS including software	249.00
1029 DOT MATRIX PRINTER	109.00
802800 MODEM	149.00
MODEM INTERFACE (for Western software)	59.00
JOYSTICKS	
PADDLES	

SIMULATION

Sublogic F 5 11 (C)	44.95
F 15 Strike Eagle (C)	14.95
Solo Flight (C/D)	9.95/14.95
Space Shuttle (R)	19.95
Spartan Ace (C/D)	9.95/14.95

STRATEGY

Broadsides (C)	32.95
Colours Chess 3.0 (C/D)	9.95/12.95
Operation Market Garden	55.95
Conquer Ambush (C)	49.95
Coastal Balloon (C)	33.95
Coastal Balloon II (C)	33.95
Eighties (C)	32.95
Field of Fire (C)	32.95
Fortress (C)	29.50
Generals/Warrior	24.95
Empire/Queen	55.95
Flint West (C)	52.75
DuLogan 80" (C)	45.95
Sargon II (Chess) (C)	16.95

NEW US IMPORTS

Paperclip (C/comp)	59.95	Seven Cities of Gold	22.95
B-Gate	49.95	Cruade of Empire	25.95
Postings	89.95	Minikash	19.95
Boasting 1	29.95	Rescue from Fractal	34.95
Boasting 2	34.95	Bathhouse	24.95

BOOKS

De Re Atari	17.00
Atari Collection Vol. 1	15.95
Mapping the Atari	13.90
Atari Basic Tutorial	11.95
Atari XL Handbook	5.95
Technical Reference Notes	17.00
Artists & Graphics Design	12.95
Hardware Handbook	4.95
Exploring Adventures	8.95
+ 750 cards & printing	

ENTERTAINMENT

BC's Quest for Time (R)	14.95	Bounty Bob (C)	9.95
Boulder Dash (C/D)	14.95	Master 2049'er (C)	12.95
Brick Construction Kit Phone		Mr Do (C)	9.95
Brick Lite (C/D)	14.95	Pay Man (C)	9.95
Coman (C)	14.95	Petal II (R)	19.95
Music Construction Kit Phone		Quasmo (C/D)	9.95/14.95
Croppers (C/D)	9.95/14.95	Smash Hits 1 (C/D)	14.95/17.95
Dreadful (R)	19.95	Smash Hits 2 (C/D)	14.95/17.95
Dream One (C/D)	9.95/12.95	Smash Hits 111 (C/D)	14.95/17.95
H.E.R.O. (R)	19.95	Hijack (C/D)	7.95/10.95
Knight's Ravens (C)	9.95	Superior Games (C)	33.95

ADVENTURE

Adventure Guide	9.95
Ultima III-Exodus	19.95
Cur Throats (C)	29.95
Deadline (C)	37.95
Dungeon Adventure (C)	9.95
Emerald Isle (C)	9.95
Evolution (C)	27.95
Highlanders Guide to the Galaxy (C)	20.95
The Hulk (C/D)	9.95/17.95
Infidel (C)	29.95
Loch of Time (C)	9.95
Mask of the Sun (C)	43.95
Meltdown (C)	7.95
Map 1 - 5 (C)	17.95
Revelation (C)	32.95
Sarcophagus (C)	29.95
Satanoid (C)	32.95
Scepter (C)	27.95
Scepter II (C)	27.95
Wahdringer (Infidel)	29.95
Witness (C)	27.95
Book 1, 11, 111	29.95

INFOCOMB PVSICLES

Wild Hikers Guide	5.95
Out Tricosts	5.95
Sussex	5.95

Available Now

ALL OTHER TITLES ALSO AVAILABLE
AT THE SAME PRICE

500 50"

One G on Drive	
8-W Hi-Res Monitor	749.95
Colonial Computer	
Blue Man 2001	
Distributors	
Electrician	
Kennedy Approach	
New York City	
Monday Morning Manager	

UTILITY

Basic Routines (C/D)	7.95/11.95
Artline (R)	25.00
Artline Tool Kit (C)	27.95
Basic XL (R)	50.00
Basic XL Tool Kit (C)	27.95
DOCS XL	27.95
MSAC 88 (R)	75.00
MSAC 88 Tool Kit (C)	27.95
Sigma DOCS (C)	29.95
Basic XL (R)	75.00

NEW SERVICE

Custom software programming. We can write software tailored to your needs at very competitive rates.

PHONE US NOW

SEND SAE FOR OUR PRICE LIST.
31 STONEYHURST ROAD
ERDINGTON, BIRMINGHAM B24 8HA

HOTLINE
(021) 384 5080

NEWSLETTER

£1½m computer to the rescue

THE phenomenal growth of MicroLink has frustrated the providers of additional capacity power by Telecom Gold.

Demand for the new electronic mail service has been such that despite the installation of processing power of a Prime computer, at certain times of the day users have been inconvenienced by out-of-order messages caused by the large volume of traffic.

Since it started, MicroLink has had to share its computer with the satellites various members of the European Parliament. The traffic jam

arose as subscribers from all over Britain and Europe and so far away as Australia and Japan began logging on to receiving messages.

With MicroLink growing at more than four times the predicted rate, the result left it no option but to request a separate computer for its exclusive use.

Telecom Gold has come to the rescue and on September 1 MicroLink will be moving to its own £100,000 dedicated system - much to the relief of its own users and the Euro MPs.

The move will enable

MicroLink to provide an increased number of receiving facilities, together with a response time described by its systems manager, Colin Knapton, as "super quick".

Telecom Gold officials have been surprised by what they describe as "the phenomenal" of a specialist service growing to big in such a short time.

Rappard believes he knows exactly why MicroLink has taken off so dramatically.

"It's more than just other electronic mail services. It's informative, and it's fun to use", he says.

It's all systems go...

THE ever-ready Help Line came to the assistance of a distinguished early MicroLink subscriber, Conservative MP for Acton Sir George Young.

He mentioned to say: "The system does not send what it is in the Telecom Gold mode. The new lines simply super-impose on the old, making it very difficult to read messages."

"I have a BBC Micro with a Telecom 2 modem and a Microsoft 800 ROM. To access Telecom Gold I have to generate a new Rotary signal. What am I doing wrong?"

What Sir George was doing wrong was trying to access the service using Microsoft 800 software.

Help Line was able to give him two options - either get a Comshare ROM, which has both Personal and terminal both emulation, or keep the Microsoft 800 ROM and use a terminal emulator with a terminal emulation program such as Term.

Clearly afterwards Sir George was able to report "all systems go" at the end of the system.

Popular abroad

NOT only is MicroLink the most new national electronic mail service - it's also making a name for itself on the international scene.

Over 100 countries have already subscribers in Belgium, France, Luxembourg, Spain, Switzerland and West Germany.

Further afield are its members in South Arabia, Australia, New Zealand and Japan.

There are even a couple of subscribers stationed at British Forces bases in

Germany, in addition to those in the UK and the Republic of Ireland where numbers increase daily.

Why is MicroLink so popular abroad?

Says one happy customer: "It's a very good way of sending information by the international PSTN system, it's faster and more economical than tele, and it's portable. I can take my laptop computer just about anywhere and still be in touch with MicroLink - at any time of the day or night."

Showing 'em how

MICROLINK will be making up another first when it goes on-line from the Silverton 8 BBC Micro User Show in Manchester.

A conference demonstration of the new service will be held at UMIST from September 27 to 29, with experts on hand to assist the full potential of users.

Others about the show will be impressed with ever more MicroLink's own electronic news pages during the three-day event.

MicroLink forges commercial ties

NEW commercial ties between Britain and Japan are being forged by MicroLink's speed and efficiency.

For several years British electronics engineer Jeff Chearing has been UK correspondent of a Japanese marketing magazine, regularly sending his news reports by mail on floppy discs to his editor, Yuki Ishikawa.

Other than expensive long distance phone calls, the two men had to rely on the five-day minimum airmail service to keep in touch.

Until MicroLink, that is. Now both Chearing and Ishikawa are subscribers of the fast-growing international mail service, and news about Britain's motor industry goes to Japan in

seconds rather than days. MicroLink has paid off for them in another way - high-speed two-way exchange of up-to-the-minute business information that can be sold as a service to commercial concerns.

And this has led to a further profitable spin-off.

For some time Chearing and Ishikawa had been

aware that there was a demand in Japan for luxury European goods, and it Britain for Japanese-made models.

MicroLink is now providing the fast, low cost medium for import/export orders resulting in an increasing flow of Waggoner pottery from Bristol and radio-controlled models from Tokyo.

STRAIGHT to work this month. Have a look at Program 1. I don't think it should cause you too many problems.

We're just assigning the values 1, 2, 3 to three numeric variables, NUMBERONE, NUMBERTWO, NUMBERTHREE, and printing out the value of the variable immediately after each assignment.

```
10 REM PROGRAM 1
20 PRINT "ONE IS 1"
30 NUMBERONE=1
40 PRINT NUMBERONE
50 NUMBERTWO=2
60 PRINT NUMBERTWO
70 NUMBERTHREE=3
80 PRINT NUMBERTHREE
```

Program 1

The end result is that:

```
1
2
3
```

appears on our screen. A long-winded way of doing things, I admit, but easy enough to follow.

Program 1 is a different kettle of fish, but, believe it or not, its output is exactly the same as in Program 1.

It's sensible enough down to line 40. We clear the screen in line 20, assign the value 1 to numeric variable NUMBER in line 30, then PRINT NUMBER in line 40.

Line 50 looks decidedly odd, though:

```
50 NUMBER = NUMBER + 1
```

How can a number be equal to itself plus one? That's what line 50 seems to be saying, after all.

The fact is that equals doesn't mean equals here — it just tells the computer to do something. The equals sign instructs the computer to do whatever task is given on its right

```
10 REM PROGRAM 10
20 PRINT "ONE IS ONE"
30 NUMBER=1
40 PRINT NUMBER
50 NUMBER=NUMBER+1
60 PRINT NUMBER
70 NUMBER=NUMBER+1
80 PRINT NUMBER
```

Program 10

When equals doesn't make all things equal...

and then label the result of that task with the label on its left.

In this case the micro interprets line 50 as starting on the right of the equals sign, take the value labelled by NUMBER and add one to it. Then label the answer with the variable NUMBER. The micro doesn't bother

assign the result to the label on the left.

Let's take this idea a little further. Have a look at Program 10. The first five lines should be fairly familiar.

When we run it the screen clears, line 20, we set NUMBER equal to zero, line 30, increase it by one, line 40, and then print it, line 50. Since NUMBER was zero, and we've increased it by one, the result will be that 1 appears on the screen.

Once the program's done this, we come to line 60 which reads:

```
60 GOTO 40
```

As you'll recall, the GOTO 40 tells the micro to make line 40 the next line it does. This increases NUMBER by one, as we've seen, so NUMBER takes the value two. Line 50 then prints out the 2 and we encounter line 60 again.

This sends us back to line 40, which increases NUMBER. Line 50 prints out the new figure, 3, then we're back at line 60, which takes us to line 40, which increases NUMBER, and so on.

I think you can see that the program will produce the steady

```
10 REM PROGRAM 10
20 PRINT "ONE IS ONE"
30 NUMBER=0
40 NUMBER=NUMBER+1
50 PRINT NUMBER
60 GOTO 40
```

Program 10

*Programming
made easy
— Part V of
MIKE BIBBY'S
guide through
the micro jungle*

that the same label has been used on both sides, it just updates NUMBER with its new value.

The practical effect of line 50 is to increase NUMBER by one — to two. Line 60 then duly prints out this new value of NUMBER.

Line 70 is identical to line 50. Starting at the right of the equals sign it takes the value of NUMBER, increases it by one, then re-labels it with NUMBER. That is, NUMBER increases from two to three. Line 80 then prints out the new value of NUMBER.

The thing to remember is that the equals sign doesn't mean equals — it means assign. You "do" what's on the right of the equals sign, and then

increasing sequence of numbers 1, 2, 3, 4, 5, 6, 7 and so on.

Try running it and see. You'll probably be glad to know that the way to break out of the program is by the early named **Break** key.

If you simply want to freeze things for a moment while you examine the output, press the **Control** and the **1** (and key) at the same time — we write this as "press **Control+1**". To restart things simply press **Control+1** again.

As we've mentioned, when a program keeps going round in circles like this, we call it a loop. We can make statements such as **NUMBER** increase by one each time round the loop.

If you press **Break**, or freeze it quickly enough after the start of the program, you'll see that the first value of **NUMBER** printed out is one, and not zero as you might think. All right, we assigned zero to **NUMBER** in line 30, but we increased it by one immediately, before ever printing it out.

But what if we wanted the zero printing out? Well, a sneaky method would be to make line 30 of Program 5:

```
30 NUMBER=1
```

What happens here is that line 40 immediately increases **NUMBER** by one, to make it zero ($1 + 1 = 0$). Line 50 then prints it out.

```
10 REM PROGRAM 27
20 PRINT CHR$(122)
30 NUMBER=0
40 PRINT NUMBER
50 NUMBER=NUMBER+1
60 GOTO 40
```

Program 27

Another way round is just to swap lines 40 and 50, so we **PRINT** before we increase **NUMBER**. This is what I've done in Program 28. Try running it and you'll see — if you're quick enough — that 0 does appear on your screen.

```
10 REM PROGRAM 28
20 PRINT CHR$(122)
30 NUMBER=0
40 PRINT NUMBER
50 NUMBER=NUMBER+1
60 GOTO 40
```

Program 28

Actually we don't need to go up in steps of one. Have a look at line 60 of Program 5:

```
60 NUMBER = NUMBER + 3
```

Remembering that micros start on the right of the equals sign, the Atari takes the value labelled by **NUMBER**, adds three to it, and gives the result the label **NUMBER**. The effect is that line 60 increases the value of **NUMBER** by three each time round the loop, so numbers are printed out on our screen going up in steps of three.

But do the numbers always have to be getting larger. Program 6, as

```
10 REM PROGRAM 6
20 PRINT CHR$(122)
30 NUMBER=1000
40 PRINT NUMBER
50 NUMBER=NUMBER-1
60 GOTO 40
```

Program 6

you'll see without too much difficulty, starts at 1000, then prints out 999, 998, 997 and so on. The cue here is line 50:

```
50 NUMBER = NUMBER - 1
```

Try running it if you won't take my word for it!

In fact we can write a general program that will start at any number and go up or down in whatever steps we want by using the **INPUT** statement we met last month. Program 70 does the trick.

First of all the program asks us the number we want to start printing from — which we label **START**. Notice how line 30 politely prints out a message to tell us what we're supposed to **INPUT**. Line 40 does the

```
10 REM PROGRAM 70
20 PRINT CHR$(122)
30 PRINT "Number to start at?"
40 INPUT START
50 PRINT "Increment of?"
60 INPUT INCREMENT
70 NUMBER=START
80 PRINT NUMBER
90 NUMBER=NUMBER+INCREMENT
100 GOTO 80
```

Program 70

actual **INPUT**, labelling it as **START**.

Lines 60 and 80 then prompt for, and **INPUT** the increment, or step, by which we want the numbers to go up, labelling it **INCREMENT**.

We then get down to business. Line 70 assigns the value of **START** to **NUMBER**. We then print this value of **NUMBER** in line 80, so we're off to a good start. If you'll pardon the pun.

We then have to increase **NUMBER** by the value of **INCREMENT** to get the next value. Line 100 then jumps back to 80, which then prints the updated value. Line 90 then increases it again by **INCREMENT** and so on.

If you have difficulty visualising this try substituting some of real numbers for **START** and **INCREMENT** and see what happens as you go round the loop.

For instance, if you mentally input 25 for **START** and 5 for **INCREMENT**, line 70 would give **NUMBER** the value 25, which line 80 would then print out. Line 90 would then add 5 to this, giving **NUMBER** the value 30 then we'd loop back to 80 via 100. The figure 30 would then be printed out, line 90 would increase it by 5 again, and so on.

All well and good, but having to escape from these loops by pressing **Break** isn't very elegant is it? Ideally the program should stop of its own accord. In other words, we should give it a condition to finish on. The loops we've met so far haven't had any finishing condition so they're known as unconditional loops.

We need to create a conditional loop, and Program 71 shows us how we go about it.

```
10 REM PROGRAM 71
20 PRINT CHR$(122)
30 "I'll keep on going
until you enter 100"
40 INPUT NUMBER
50 IF NUMBER>100 THEN STOP
60 GOTO 30
```

Program 71

The idea is that we keep on looping round, printing out the same inane message, until we enter 999. That is, the condition for ending the loop is that we **INPUT** 999 — any other

number will cause the loop to be repeated.

Let's see how we achieve this: Line 20 clears the screen, then line 30 prompts for the INPUT, saying the program will keep on going until 999 is entered.

On days you're wondering what the *T* is in line 30, it's the Atari's abbreviation for PRINT. If you want to substitute *P* for PRINT, then go ahead. I prefer the clarity spelling it out gives you.

Line 40 then INPUTs into the variable NUMBER. Line 50 is the heart of the matter — this is where we test for our condition. It reads:

```
50 IF NUMBER=999 THEN STOP
```

This uses the IF...THEN statement, one we haven't met before. It reads:

If some condition is TRUE, do what follows the THEN.

If that condition isn't TRUE, ignore what's after the THEN and carry on with the next line. In the case of line 50, this boils down to:

If NUMBER does indeed equal 999 THEN STOP.
If NUMBER isn't 999, THEN skip through to the next line — line 60 in this case.

So if when prompted by line 30, we'd INPUT a value of 999 for NUMBER, we would do what's after THEN and STOP.

We haven't met STOP before, but I don't think you'll be too surprised to learn that it stops the mine's dead in its tracks. It also prints out a message indicating the line it was stopped at. In this case it would be STOPPED AT LINE 50.

If, however, we entered a value for NUMBER other than 999, our condition hasn't been met, so we carry on with the next line of the program, line 60, which then sends us back to our prompt for INPUT again.

In other words, the IF...THEN statement assures that we keep on looping until we enter the number 999. We've got ourselves a conditional loop!

Actually there are other ways of stopping it, such as pressing Break or entering a word when it's expecting a number. For the moment we'll assume that you're good-mannered

enough to avoid this. Later on we'll see how to "test proof" our input, as it's known.

Try running Program VII, and enter 999 to stop it. Then enter:

```
CONT
```

The program will restart — CONT stands for continue. The same trick works after you've pressed Break.

The IF...THEN statement isn't too hard to use, but remember:

- The condition you're testing for comes directly after the IF.
- You can put any valid Basic instruction after the THEN.
- The instruction after the THEN is

Smaller numbers at the sharp end...

only carried out if the condition has been met — that is, if it's true.

- If the condition is not true, the micro ignores what's after the THEN and continues with the next line of the program.

Take a look at Program IX now. This does exactly the same job as Program VII but in a different way. This time we test to see if the number is NOT equal to 999, and, if this is so, we loop back to our prompt for INPUT. Lines 30 to 40 are identical. The vital bits are lines 50 and 60.

Line 50 reads:

```
50 IF NUMBER<=999 THEN GOTO 30
```

Here our condition is that

```
10 REM PROGRAM IX
20 PRINT CHR$(128)
30 ? "It'll keep on going
until you enter 999"
40 INPUT NUMBER
50 IF NUMBER<=999 THEN GOTO 30
60 END
```

Program IX

NUMBER isn't equal to 999. That's what $<$ means — not equal to. And if our condition is true — that is, NUMBER isn't equal to 999 — we THEN loop back to line 30.

On the other hand, if the condition in line 50 isn't met — that is NUMBER is 999 — we simply drop through to line 60, which reads:

```
60 END
```

We met this before. As its name suggests, it simply ends processing, this time without any message, unlike STOP.

The not equal to symbol, $<>$, may be new to you. It's just one of a set of inequalities, as they're known, that come in very useful in combination with IF...THEN statements. Table I summarizes them.

If you're anything like me, you'll get confused between $>$ and $<$. The trick is to remember that, for both symbols, the larger number goes opposite the bigger end of the symbol, whereas the smaller number goes opposite the sharp, or smaller, end. It may not be the way kinship remembered it, but it's good enough for me!

Program X uses what we've learned about IF...THEN statements, as they're known, to add a finishing point to Program VII. Lines 10 to 40 are identical. We clear the

Inequality	Meaning	Example
=	equals	7=7 is true, 8=7 is false
>	greater than	7>5 is true, 3>4 is false
<	less than	3<4 is true, 7<2 is false
<=	not equal to	4<=5 is true, 4<=4 is false
>=	greater than or equal to	6>=5 is true, 6>=6 is false
<=	less than or equal to	7<=7 is true, 7<=8 is false

Table I: Inequalities

screen and INPUT a value for START, the number we start from.

Lines 80 and 90 then prompt for and INPUT the number we wish to end at, FINISH, 70 and 80 then INPUT INCREMENT, the value of our step. As in program 18, the value of START is assigned to NUMBER, line 90, and then printed, line 100. Next, we increase the value of NUMBER by INCREMENT and store it in NUMBER again at line 110.

Line 120 is the crucial:

```
120 IF NUMBER<FINISH THEN GOTO 90
```

What this says is, if we've incremented NUMBER past FINISH end the program here and now, if not, then continue with the next line, which will loop back to 100 and print the newly-incremented number.

Notice that if we have exceeded the limit we don't actually print that value of NUMBER since we don't loop back to the PRINT statement at

```
10 BEGIN PROGRAM 3
20 PRINT CHR$(120)
30 PRINT "Number to start at?":
40 INPUT START
50 PRINT "Number to finish at?":
60 INPUT FINISH
70 PRINT "Increment at?":
80 INPUT INCREMENT
90 NUMBER=START
100 PRINT NUMBER
110 NUMBER=NUMBER+INCREMENT
120 IF NUMBER<FINISH THEN GOTO 100
130 GOTO 100
```

Program 3

line 100.

Experiment with different values for START, FINISH and INCREMENT and see if you can understand what's happening. This program is quite fundamental, and we'll be using its ideas a lot, so it's worth an effort.

For instance, if you start at 25, set

the finish to 35 and prescribe a step of 5, you'll get:

```
25
30
35
```

on your screen.

However a start of 50 and a finish of 55 with an increment of 3 will result in:

```
50
53
```

You won't see a 56, because it exceeds our limit.

What happens if the start and finish numbers are the same, or the increment is negative? In fact, will the program work with negative numbers? And what would happen if we choose an increment of zero? Find out!

■ Well that's all for this month. Next month we'll be continuing with loops, but in an entirely different way.

CENTRONICS INTERFACE



- Transparent to all s/w - no driver programme necessary
- Connect direct to 600 or 800/XL or 130 XE - or to disc drive if fitted

FCC

SYSTEMS LIMITED

THE LODGE
MOORLANDS ROAD
BEPFRITT
SOMERSET TA11 8NP
TEL: CROMFORD (0483) 73427
PRESTEL MAILBOX 04675342

£59.99

+ P&P at £1.00
and VAT



DEALER ENQUIRIES MOST WELCOME

... with the Multi-System/Database modern serial interface plus software package from Miracle Technology.

This unique-coming package gives ATANS users full Prestel facilities, including graphics, and allows access to Microvat[®], Visacarta systems, files, electronic mail, bulletin boards and databases. Database handles base rates of 1200/75, 75/1000, 1200/1200, 200/1000. 850 interface not required.

For models 480, 660, 660XL, 8000L, 8000, 8000L and 1200L used with suitable modems.

To get your ATANS on-line, all the way, clip the coupon today.

Please send me:

-
- Multi-System/Database package @ 59.99
 - or soft + 12 issue P&P
 - I enclose cheque/postal order
 - charge my Access/Visa card(s)

exp. date / .. / ..

Name

Address

..... Postcode

send to:

Alan Bennett & Miracle Technology (UK) Ltd,
25, PLYMOUTH, SPENCER ST 1ST,
Tel 01752 27121

Telephone orders only

FULL PRESTEL FOR ATARI USERS!

MIRACLE
TECHNOLOGY



Bruce Banner in the digital art!



The transformation from Hulk to Bruce

Setting the standard for adventure graphics

As promised last month, let's take a look at the Scott Adams Quest Probe series. Unfortunately, *The Fantastic Four* — next in the series of *Marvel Super Heroes* to be put into adventure form — has not yet arrived from *Adventure International* so I shall only be able to look at the first two games of the series, *The Incredible Hulk* and *Spiderman*.

The Quest Probe series is Scott Adams' first major venture into graphics from the off, although his earlier games have had graphics added in some cases. Hence the games are available either as text only cassettes or on disc with graphics, with a commensurate price difference.

The graphic versions also contain a "graphics off" command for any text fans who prefer the faster loading of discs.

Now I have in earlier columns expressed my views on what graphics add to and subtract from a game. In the case of Quest Probe I have to say that the graphics do add to the game for two main reasons.

Firstly the characters portrayed are cartoon characters in their own right. Hence the impression given in the

BRILLIG takes a first look at adventures inspired by those Marvel comic heroes

games is an entirely accurate one, and nothing jars with the players' perception of the central figure. This is reinforced by the inclusion of an actual *Marvel* comic in the package, designed to introduce the characters to newcomers.

Secondly the text in the games tends to be fairly sparse and a little repetitive, presumably a reflection on the amount of memory taken up by the graphics. For instance, in *The Hulk* most of the action takes place in or around a series of large domes, while in *Spiderman* the action takes place in a large office building.

The graphics themselves, particularly in *The Hulk*, are the best I have seen in any Atari adventure, giving an excellent representation of the original cartoon characters. If graphic adventures are to be the way forward then this is the standard to best for any new contenders.

The games have a slightly disappointing quality, in that the actual

story line behind each is similar, as you send your Super Hero on a gem-collecting mission. I feel that with a little more imagination and variety the characters could have been set some slightly more challeng-



What you need is a point of reference

ing tasks to test their amazing powers.

The Quest Probe series to date provides some good challenging hunt-and-find problems and as this is an interconnected series it will presumably follow the same pattern in the Fantastic Four. Worth buying for the graphics for sure, and one Scott Adams adventure is worth a look, but the text only versions are a little on the dry side.

Now on to some of the nitty gritty adventuring problems. Picture the scene. There you are strolling contentedly through your adventures, a nice full inventory, when suddenly everything looks the same. No matter which exit you take your surroundings never vary. In short you have hit what every adventurer dreads — a maze.

This is the sort of problem that is going to confront you in probably seven games out of ten, so we had better make sure that there is a way of dealing with it.

Richard Burke, of Gowers, has come up against just such a problem in *Escape from Pulsar 7*, written by Brian Howarth as one of the Mysterious Adventures now marketed by Adventure International.

Richard's problem is that he cannot open the locker in the storeroom, or indeed always find the storeroom. The storeroom in *Pulsar 7*

forms part of a double maze in the game.

The first part of the maze is that several rooms are exits from a series of air ducts. The second part, in common with several of the other Mysterious Adventures, is the total lack of geographical logic in the game.

In adventures today there is absolutely no excuse for an exit leading north to a location and yet the south exit from that new location leading somewhere completely different. This is the case in *Pulsar 7*, and probably explains why Richard cannot always find the storeroom.

The brilliant patent maze mapping method can, however, solve the problems caused by encountering games writers with no sense of direction. The first sign of a maze is when, despite the plethora of exits in many directions, the player cannot appear to move. The location description remains the same. But has the location?

The problem is that you cannot tell. Everything looks the same. What you need is a point of reference, so start

with where you are and call that No 1.

All you have to do is drop an item from the inventory, such as a pencil, to identify location No 1. Now go through the available exits, and every time you can still see the pencil you have dropped, mark a dot against that exit. It obviously leads nowhere.

If you cannot see the pencil, then you have moved, so drop another item and repeat the process. Continue this until you have mapped the whole maze, and from then on it will be a piece of cake to pick your way through it.

In the case of *Pulsar 7* I suggest you name each location after the inventory item you drop, as the geography of the maze is pure nonsense. But by persistence with my method I can promise Richard will find something that will be a smash hit with that locker.

Mind you, some adventure writers have got smart to this system, so don't be too surprised if your mapping items start disappearing while you are away.

Jymn Pearson's *Case of Crowley Manor* is the Other Venture causing James Chapman problems, being stuck in the numerical lock room with a monstrous creature. Well, James, follow Rule Number One and examine everything in an adventure, including your transportation to the manor, and you may find some useful liquid refreshment.

Finally a letter from M. Woodgate asks me to commit an act of honesty and recommend a good disc adventure that is not from Infocom.

I see from his letter that he already has Atari's *The Pay-Off* and that he is considering *Mask of the Sun* by Brotherhood — which is no bad choice.

Can I also suggest the Ultima series II to IV if a graphic adventure is what he is after. They should keep him busy for a few months.

Since Adventure International has featured as the bulk of this article Steve Collins, of Probe, wins an Atari User T shirt for his "Glitch of the



If you map a maze by dropping an object at every location it will be a piece of cake to pick your way through.

Month" recounted to him by none other than Scott Adams at last year's PCW show.

Adventureland has an obstacle bear to pass. (Show!) or Scram! Bear will work. Now try replacing "an" with "a" as one frustrated American did.

No wonder the bear was surprised.

TAKE ONE LARGE HOD...

THOSE of you who solved last month's Bricks puzzle will know that you needed rather a large hod.

The program we present here provides a means of arriving at answers to the questions: (a) How many bricks did you drop? and (b) How many E/W moves did you make?

The rooms are in the array R, with P as the pointer to the current room. There are a generous 300 rooms and

P starts in room 20.

The data correspond to the cards described last month. Each set of three numbers provides the instructions to:

- Drop a brick or clear the room - drop 5 or 0 in R/P.
- Move East or West - add 1 or -1 to P.
- Get the next three data items and count moves.

Reaching the equivalent of the

STOP causes the array C to exceed its bounds and so the TRAP command causes the value of i - the number of moves - to be printed out. The array R is then searched for 5s, the number of those corresponding to the number of bricks dropped.

If you run the program you should get answers of 134,488 moves and 501 bricks. Be warned though, Anal-Basis is so slow that the program takes about an hour to run.

```

10 DIM R(299),P(299),M(299),C(299)
20 FOR I=0 TO 299:R(I)=0:M(I)=0:C(I)=0
30 FOR I=0 TO 299:R(I)=R(I)+1:M(I)=M(I)+1
40 I=2
50 FOR J=0 TO 9
60 IF R(I)=5 THEN
70 GOTO 100
80 GOTO 100
90 GOTO 100
100 I=I+1
110 GOTO 100
120 GOTO 100
130 GOTO 100
140 GOTO 100
150 GOTO 100
160 GOTO 100
170 GOTO 100
180 IF R(I)=0 THEN
190 GOTO 100
200 IF R(I)=5 THEN
210 GOTO 100
220 GOTO 100
230 GOTO 100
240 GOTO 100
250 GOTO 100
260 GOTO 100
270 GOTO 100
280 GOTO 100
290 GOTO 100
300 GOTO 100

```

Computer Support PRESENTS

A whole new range of affordable software and hardware products for every Atari user

80 COLUMN PAGE £29.95
An fast 160 column built in to your Atari, automatic on screen, works with currently available software.

DEBUGGER £49.95
A built in machine code monitor capable of stepping the program or the 16 hexadecimal registers, read from disk, write to disk, return to program and many other operations available. A must for all assembly language programmers.

THE GAP £39.95
For the 40 year in your 400/800 with this hardware modification, once fitted to a 400 machine there will be 500 of year 1981!

ROOM EMULATOR £29.95
Developed with cutting edge software, quickly and affordably, just flick a switch and cartridge RAM becomes ROM, can also be used in conjunction with CARD EDGE SUPPLUCK FOR to backup these extremely protected cartridges that produce a custom copy.

QUICK-START £19.95
View the other side of all your diskettes, simple to operate just flick a switch.

BACKTRACK £19.95
A hardware modification, write back system to any diskette, can be used for routine creation of back sectors or to backup some protected files.

FASTPRINT £29.95
Runs a standard electronic compatible parallel printer from the parallel port of any Atari computer, includes a telescopic transfer, runs with any laser program, custom compatible data conversion feed.

TAPE REVERSE £24.95
Microchips are cheap, cassette or cartridge, use system (DMS), separate input to pre-determined data bytes, the end result file can be constructed then re-assembled using an emulator.

FILE LOADER £19.95
An excellent DOS menu which does not require DOS on the disk, ideal for games.

BOOT LOADER £19.95
A self booting menu, complete boot diskettes to a file format, write new utilities include: tape to disk, disk to tape, disk to disk, format, write new utilities.

Other items available:	Price	Stock
DATAFILE COMPILER	£9.95	13
SYSTEM TOOL	£12.95	10
MASSDISKCOPY	£9.95	15
UTILITY PAD ONE	£9.95	15
DATA SUPPLUCK FOR	£12.95	10
CARD SUPPLUCK FOR 128K	£12.95	10
CARD SUPPLUCK FOR 256K	£12.95	10
CASSETTE COPIER/EMUL	£19.95	10
RAMBO LIBRARY BACKUP	£12.95	10
SYSTEM COPY/FORMAT DISK	£9.95	10
(Please specify make and model of monitor)		
16" MONITOR (1000/1000)	£29.95	10
16" MONITOR (1000/1000)	£29.95	10
REPLACEMENT MONITOR LEAS	£11.95	10
16" MONITOR (1000/1000)	£29.95	10
16" MONITOR (1000/1000)	£29.95	10
16" MONITOR (1000/1000)	£29.95	10

Coming soon!
THE BAWN SELECT ...
An extra 500 of year memory for the 8000.

SPAWN SELECTION ...
Select from any set of up to eight options from a menu or powerup, includes mouse and ROM.

RAMBO SELECT ...
Select from any one of up to four ready plugged in cartridges.

QUICKSTART ...
Simple the best made emulator yet.

DOUBLE TRIP ...
System uses 1000 disk drive to true double density (1000) with maximum capacity to single or double density.

SPINEMAN ...
A very advanced action programme.

Send cheque or postal order to:

Computer Support

28 Seward Road, Abbey Wood, London SE12 9JW

Tel: 01-351 7338

Units 50/51a Post 8 Peckham
Please allow up to 28 days for delivery

Please order
Mail Order only

©1988 C.S. Computer Systems Ltd. All rights reserved.
This is a trademark of C.S. Ltd.

Sparkling arcade game is fast – and fun...

ONE of the classic arcade games, often emulated but never in the opinion surpassed is **Boulderdash**.

The concept is simple: itself. You control Rockford, a handy little man who whizzes through the boulder-strewn sub soil collecting diamonds as fast as his little paws will carry him.

Collect enough diamonds and a door opens up. Reach the door to be transported to the next level up, and start again in a different cave.

In practice it isn't that simple – is it ever? – as there is a stringent time limit with a really off-putting, panic-inducing 10 second countdown.

Rockford is well aware of this, so any pause in the action leaves him frowning and tapping his foot impatiently.

This is quite apart from the fact that the more boulders you remove the more Rockford is likely to receive a boulder on his head as he strives for the next gem.

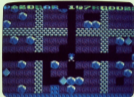
The caves themselves are

of varying degrees of difficulty, from not too easy to downright impossible.

Cave A lets you warm around and acclimatise to the perils of the plummeting boulders you inadvertently induce. Cave B does more of the same, while Cave C wiped me out for about a fortnight as I struggled to clear all 24 diamonds and find the exit in time.

Expert boulderdashers have shown me that there is a technique to every screen, although to assist the unwieldy there is a facility to flip forward four caves at a time, or a pause button to allow you to plan your route through the earth.

Trapping Butterflies which



turn into diamonds when you casually drop a rock on their heads is a theme in several caves, together with flooding them and avoiding nasty little "wings" set to chase you around the screen.

The whole game is leather-dious pace fun and an absolute must for any Atari owner. And if this doesn't leave you exhausted Boulderdash it is coming. Buy it!

Pete Swanson

HIJACK'S ALL RIGHT, JACK!

IT'S a good job English Software released **Hijack** before the Shi'ite Muslims decided to play the game for real. Otherwise they might have laid themselves open to charges of opportunism.

As it is, the worst you could level against them is a charge of premeditated plagiarism.

If you ever saw Broderbund's *Choplifter*, then *Hijack* will give you a remarkable feeling of déjà vu.

The innovative aspect of the scenario is that it is a train that has been hijacked.

"By this train to Wasegor" doesn't sound quite right, does it?

There are 10 VIPs aboard the train and your job as a chopper pilot is to pick them off the roof of the train and deposit them in the safety of the rear carriage. Meanwhile,

of course, there are hazards to be avoided.

Ques fire at you and trees suddenly offer themselves as targets for you to crash into. It's like learning to drive all



over again!

The title page is accompanied by a jolly rendition of the Runaway Train, but the game sounds consist largely of the tacks-tacks-

tacks helicopter rotor and white-boom gunshots.

One nice feature is that following a wipe-out you can start from the level you were on when killed. You can also restart from the beginning if you really want to.

It's not one of the most compulsive games I've ever played. In fact in my opinion the clearest part is the way the title is written in an appropriate shape on the cassette title.

It's a lot more colourful than *Choplifter*, and if you never saw Broderbund's classic you may well love *Hijack*. For my money, though, I prefer the original.

Talking of money, the 48K cassette costs £7.95 and the 128K version is £10.95.

Dave Russell

Magick moments in Festeron

ONCE upon a time there was a nasty Queen who, as the law governing fairy stories dictates, had a beautiful and virtuous stepdaughter.

Now the Queen, being the crabby, cantankerous and malicious monarch that she was, decided that no one should marry the fair Princess Marrying Star until they first proved themselves worthy.

Naturally Queenie devised tests that would ensure that none of the magic knights that sought the Princess's hand would live to tell the tale. One besotted wretch was even sent deep into the hills of Menden, there to slay a Gnu and drag the carcass up where all might see it.

Now any infomorn adventurer worth his or her salt could have told the poor souter that he'd have been better off staying at home reading a good magazine like *Asari Star* but no — off he went. Queenie soon overcame the hapless knight who, lost without a lamp, was soon devoured by a lurking Gnu.

Since nobody ever survived the trials, the Princess was condemned to a life of loneliness and died without ever seeing a single knight make it to the finish.

Many kingdoms later, a catastrophe happened to be rain-washing through the ruined tombs of monarchs and shepherds across a glowing object amid the dust and disrepair.

It was the Princess's heart, now long since turned to stone but shining brightly with the unfulfilled wishes of a lifetime. And that, dear reader, was how the Magick Stone of Dreams was discovered.

In *Wishbringer*, from

infomorn, you begin not as a knight in shining armour but as a humble Post Office worker. The game begins atop a hillside in the coastal town of Festeron.

You may wish to explore the town before or after going to the post office — the cinema, cemetery, police station, light-house, pleasure wharf, park, library and church are well worth a visit.

Your boss, Mr. Crisp, is not



the most pleasant of postmen — when you first meet him, he's reading other people's postcards — and will tell you in no uncertain terms what he thinks of you.

Your first job is to deliver a letter to the proprietor of Ye Old Magick Shoppe, who sits on a cliff top on the other side of town. You can't afford to hang about too long — the Magick Shoppe shuts at 5pm and the game starts at 6pm.

Getting there can present a problem. The boss of all messengers in the shape of a vicious pooble blocks the main route, and even if you do manage to pacify it the Pooble doesn't stay tranquil for long.

Once at the Magick Shoppe an old lady who is as flight-



ting and pale "as a tested signature in an antique book" receives your delivered letter.

She is clearly upset when she sees the writing on the envelope: "It has been a long, long time since I last saw this handwriting. Hoped I never would again".

The letter turns out to be a ransom note. Somebody signing himself as the Evil One has kidnapped the old lady's cat and wants the Magick Stone in return.

The lady is evidently distressed. In a voice brimming with emotion, she whispers "Many seek to gain the Stone of Dreams yet few can imagine the price. For years I have fought to

conceal it from the Evil One and others like her.

"My youth, my home and family all were forfeited for its protection. And now, now it



claims my only companion".

"Guess who's about to be entrusted with the Stone and the task of rescuing Chaco the cat? Right first time!"

Before you know it, you're thrust out of the shop and into thick fog. When you peer through it, all you can see is the summit of Post Office hill. Only trouble is, there's now a massive tower where the Post Office used to be.

If you make it through the fog without falling to your death off the cliff, you'll find the whole scene has changed. Where birds once sang, sulfurs now sreak. Trolls lurk. Your beloved town now seems to be in the grip of decay and despair.

And if you thought a nip on the trouser seat from a pebble was bad enough, what are you going to think about being chased up by the enormous hellhound which has usurped the postman's position?

Fortunately, the Magick Stone—Widdinger's—can help. With it, you can wish for advice, darkness, flight, freedom, luck, strength and so on. You can only wish once for each, so most choose the option with care.

You must also have certain objects in order to make the wish effective. For example, to wish for darkness you must first have drunk some Guel's milk.

Widdinger is ranked as an introductory level adventure—the other Infocom gradings in order of difficulty are standard, advanced and expert—which means it is more suitable for the apprentice adventures. Nevertheless, even seasoned adventurers will find it a joy to play.

The package comes randomly boxed with glossy manual, map and your very own Widdinger stone.

Widdinger is not intended as the sequel to the marvellous Sorcerer and Enchanter as some people thought it might be—but pleasure is still to come.

Not once again Infocom has done up traps. Widdinger is filled with humour, excitement, detail and atmosphere.

It maintains its high standards and keeps Infocom in pole position as the best adventure publishers in the world. Definitely not to be missed.

Bob Chappell



Some of the best at a fraction of the price

I'VE got some good news and some bad news.

First the bad news. If, like me, you were one of the first to spend your hard-earned cash on an old 800, then you might be forgiven for thinking that you had some terrible personal problem when it came to buying cheap-quality software.

But this is where the good news comes in. Now, thanks to a few enterprising software dealers and the growing potential of our own software writers, we can at last enjoy some of the best Atari software at a portion of the price.

Arches by Electronic Arts, is one of these classics to filter through. It's distributed in the UK by Aristocrat and costs £11.99 tape or £14.95 disc. It is, at first glance similar to chess, not only in its board layout but in the movements of some of its players.

But that is where the similarity ends.

Arches is a two-screen game. The main screen is a checkered board, of light and dark squares.

There are also squares which vary between light and dark, but most important there are the power points—five squares which, if totally controlled by one side, will end the game.

The second screen is the scene of fierce battles in

decide the right to own a square.

So much for the layout. Now on with the game itself.

Arches can either be a one or two player game.

You are given the choice of being either the light force or the dark force—and this is where the squares matter.

If you are the light side, the light squares will give you more strength than the dark squares and vice versa for the dark side.

The revolving squares will give a different amount of strength depending on your colour and its colour.

Each side has an army of equal strength but different in their fighting styles. Thus tactics play a major part in **Arches**.

The most important element is the Wizard who can cast spells ranging from healing your player to reviving a dead piece.

This usually encourages an onslaught on the Wizard from the word go, but it can prove a very costly attack and is

generally not preferred by the more experienced player.

My only complaint about this excellent game is that you do not have any on-level variations in the one-player mode so I found myself leaving the computer time after time.

The manual is well laid out giving hints on playing the game and a thorough explanation of your spell-casting ability.

The one I received was a Commodore 84 version which was accompanied by a photocopy of the Atari key functions.

I find this a touch strange as **Arches** was released first on the Atari, then on the 84. Perhaps this was a pre-release version of the manual.

All in all an original game, well written and a pleasure to play.

Paul Irvine

■ The review of **M.U.D.I.** in the July issue was also by Paul Irvine and we're sorry we only managed to get 50 per cent of his name right!

We looked last month at Modes 3, 5 and 7 and saw how they were four-colour modes. This month we'll take a look at the modes we missed out, 4 and 6.

These are still "map" modes, but they only allow two colours to be used. If you're wondering who anyone should want to limit themselves to two colours, the answer is memory. By way of a slight digression, let's see why this should be so.

We talk about a bit of information and because the word bit is used in everyday language it's easy to forget that it has a precise meaning in this context.

When someone offers you some more food and you say "Well, maybe just a bit more, please", you're using the word in a very imprecise way.

In information processing terms, bit is a contraction of the two words binary digit. We say that one bit of information has been transmitted if the number of possible outcomes has been halved.

Suppose I toss a coin and tell you that the outcome is heads. I've given you one bit of information because I've reduced the possibilities from two to one. Before I transmitted any information, the outcome could have been heads or tails.

Suppose your task is to guess which square on an otherwise empty chess-board contains a pawn. If I tell you that it isn't in the left-hand half of the board, once again I've given you one bit of information.

In the case of the chess board I've reduced the possibilities from 64 to 32. With the coin I reduced the possibilities from two to one. In both cases I have provided the same amount of information - one bit.

If you've been following Mike Blazy's Bit Wise series, you'll be quite familiar with binary notation, so let's work our way back towards the graphics screen.

If you think about a simple black-and-white screen, each pixel can either be white - 0 - or black - 1. That is, we can describe the pixel's state using only one binary digit. Let's say 1 represents 0 and 0 represents 1.

We could now describe a complete screen as a string of 1s and 0s and we

Hi-res graphics in modes 4 and 6

Part Five of DAVE RUSSELL's introduction to Atari graphics

could store this information in memory.

Suppose now we have the option of each pixel not only being 0 but being coloured red. That is, each pixel can be 0 or 1 or 11, and if it can be white or red.

Our single binary digit can't convey all this information, so we need to introduce another one. We could then describe each pixel's state as 00 - 01, 01 - white 01 - or 11 - red 11. There is another possible combination, 10 - red 01 - but in this case it doesn't make much sense.

It's easy to see that if we wanted to describe a screen containing this much information we'd need a bigger string of 1s and 0s. If even more colours were possible, we'd need an even bigger string.

This information is held in the video's RAM memory and so we can see that if we want more colours available we have to allocate more memory to hold the possible colour

information.

The other variable in the equation is the size of the pixel or the resolution. A high resolution screen has many pixels per row of screen and therefore needs more information-holding space than a low resolution screen.

Mode 4 has the same resolution as Mode 5 - 40 rows x 80 columns plus a text window. However because only two colours are available in Mode 4, it takes up less memory than Mode 5.

Similarly Mode 6 has the same resolution as Mode 7 - 80 rows x 160 columns plus text window - but again with only two available colours.

We can do much the same as we did in Modes 3, 5 and 7. For example, type GR 4 and the screen should clear to black with the blue text window at the bottom.

If you now enter:

COLOR 1: PLOT 5,5

you'll see our old friend the orange

squares. To give us a bit more to look at, enter:

DRAWTO 30,9.

The colour of the plotted point defaults to orange but we can alter it by setting register 0. If you enter:

SETCOLOR 0,7,4

you alter register 0 to colour 7, luminance 4 and the orange blocks change to a nice deep blue.

The colour information for the background is held in register 4, so if you type:

SETCOLOR 4,5,6

the block should change into a purple – colour 5 – with luminance 6.

The colours for the plotted points and the background are the two colours. We could also change the colour of the text window via register 2. Try:

SETCOLOR 2,12,4

for example. You should now have blue blocks, purple background and green text window – revolving, isn't it?

Blue, purple, green ... that's three colours. However, we haven't discovered an undocumented aspect of Mode 4. We've cheated by counting the colour of the text window which is really a bit of Mode 0. If we used a full-screen Mode 4, the text window would disappear and we'd be back to two colours.

If we specify **COLOR 2** for the plotted points, we plot them in the background colour. If there's nothing already on the screen we wouldn't see any effect of this. However, one

way to erase part of a display is to re-plot it in the background colour.

For example, try entering:

COLOR 2: PLOT 5,5: DRAWTO 30,9

and the line should disappear.

In addition to **FLOTTing**, we can still **PRINT#6** as we did in Mode 5. For example, enter:

POSITION 30,30: PRINT #6:"111110000011111"

and you should see lines appear where the 1s are printed and a space in between them where the 0s are.

If you're looking for ways of saving memory, it's worth noting that using **PRINT#6** is generally more economical than **FLOTTing** pairs of data points. This means that a combination of Mode 4 and **PRINT#6** can be a very economical way of producing a display.

Although we can see the display simply by looking, there are times when your program needs to "see" the display. That is, it needs to know whether a particular screen location contains anything.

For example, you may be bouncing a ball around the screen and need to know if it has hit a wall.

Atari Basic provides a graphics command which will look at a screen location and say what is there. The command is **LOCATE** and the form it takes is:

LOCATE X,Y,Z

where X and Y are the coordinates of the screen location and the contents of the location are stored in Z.

If you press Reset and enter **GRA**

to get back to a clear Mode 4 screen, then enter:

COLOR 1: PLOT 40,20

you'll once again be confronted by an orange square. If you now type:

LOCATE 40,20,Z: PRINT Z

the number 1 should be printed in the text window.

If you now enter:

LOCATE 40,19,Z: PRINT Z

the number 0 should appear in the text window. In the first case, the 1 signified that location 40,20 contained a coloured pixel whereas the 0 in the second case signified an unlit pixel.

You can use the information gained from looking at the screen to determine what happens next in your program. For example, if your ball has hit a wall, you must change its direction to simulate a bounce.

For example, enter:

LOCATE 40,20,Z: IF Z=1 THEN SETCOLOR 4,5,6

and see the effect. Because we plotted a point at 40,20 the **LOCATE** command assigned a value of 1 to the variable Z. If the Z=1 test returns a value of "true" as the **THEN** part of the command is carried out, in this case the colour in register 4 is altered and the background once again becomes purple.

The **LOCATE** command is very useful but behaves slightly differently depending on which mode you've selected. If you're in Modes 0,1 or 2 the **LOCATE** returns a value between 0 and 255.

If you've selected Modes 3, 5 or 7 then **LOCATE** will return a value of 0, 1, 2 or 3. As we've just seen, in Modes 4 and 6 the **LOCATE** command returns either 0 or 1.

If you recall the earlier articles in this series, you've probably worked out the correspondence between the characteristics of the mode and the values that **LOCATE** returns.

Even so, I suggest you try out the **LOCATE** command in all the graphics modes that we've covered so far and get familiar with its results.

■ That's your homework for this month – next month we'll look at Mode 8.



Given the square the answer is on – just one bit of information is a help ...

ROLAND WADDILOVE goes down the road that leads to artificial intelligence with this program that modifies itself

DATA MAKER

THE assembler published in the August issue of *Atari User* is a very useful tool for developing short machine code routines. If you've been using it, you might well be asking: How can these routines be incorporated in a basic program?

The best way would be to store the machine code in data statements in the program. Then a simple routine could be used to read each item and store it in memory.

The problem with this method is how to get the code into the data statements. It would be very tedious to do it yourself... surely there must be an easier way?

Well, there is. Just ask your Atari to do it for you!

Data Maker was designed to take any section of memory and to convert it into data statements. All you have to do is tell it where to start and how many bytes to convert.

The program constructs all the data statements and types them in for you. It then deletes itself, leaving just the lines of data.

Quite a clever technique is used by the program and it's worth studying.

What the program does is to clear the screen and print a line number followed by "DATA". This is carried out in line 20.

It then Pokes the memory and gets 20 bytes of data. These are printed with commas between by lines 60 to

110. Finally, it prints:

DATA 130

The next line, 120 is the most important line. It Pokes memory location 842 with 13 and ends the program.

What this does is to put the Atari editor into input mode when the program ends. It's as if you had just pressed Return when entering a line. Anything printed on that line is entered.

The clever part is positioning the cursor just before the program ends so that it lands on the line of data that it just printed. It then enters it as Frye had typed it in. The cursor is then

moved on to the next line.

It's still in input mode remember, so it enters:

DATA 130

which it does. This line sends it back to line 20 to print another data statement if it hasn't finished. When it's done this, it stops, enters it and goes round again.

When it's entered all the data, it goes on to line 140 which puts it back into normal keyboard mode. All the line numbers used by the data maker itself are printed on the screen followed by:

POKE 841,13

In line 150.

Again the cursor is positioned and the editor put into input mode.

The program ends, at which point the editor takes over and enters all the line numbers, deleting the program itself.

Finally it enters the poke which sets the editor back to normal keyboard mode. All that remains are the data statements.

As you can see, it's a powerful technique that's worth mastering.

I find programs that modify themselves quite interesting and there must be many other applications of this clever trick.

How about an artificial intelligence program? It could grow like a living creature, building up its data as it learned...

```

20 REM ***** Data Maker *****
30 REM ***** DO START HERE *****
40 GOSUB 100
50 IF ( "Data Maker..." ) THEN GOTO 10
60 NUMBER...POKE 841,13
70 IF "Start address..." THEN GOTO 4
80 IF "How many bytes..." THEN GOTO 110
90 END
100 GOTO 1000-POKE 841,13 GOTO 1000
110 GOTO 100
120 REM ***** DO *****
130 DATA 130
140 POKE 841,13
150 POKE 841,13
160 POKE 841,13
170 POKE 841,13
180 POKE 841,13
190 POKE 841,13
200 POKE 841,13
210 POKE 841,13
220 POKE 841,13
230 POKE 841,13
240 POKE 841,13
250 POKE 841,13
260 POKE 841,13
270 POKE 841,13
280 POKE 841,13
290 POKE 841,13
300 POKE 841,13
310 POKE 841,13
320 POKE 841,13
330 POKE 841,13
340 POKE 841,13
350 POKE 841,13
360 POKE 841,13
370 POKE 841,13
380 POKE 841,13
390 POKE 841,13
400 POKE 841,13
410 POKE 841,13
420 POKE 841,13
430 POKE 841,13
440 POKE 841,13
450 POKE 841,13
460 POKE 841,13
470 POKE 841,13
480 POKE 841,13
490 POKE 841,13
500 POKE 841,13
510 POKE 841,13
520 POKE 841,13
530 POKE 841,13
540 POKE 841,13
550 POKE 841,13
560 POKE 841,13
570 POKE 841,13
580 POKE 841,13
590 POKE 841,13
600 POKE 841,13
610 POKE 841,13
620 POKE 841,13
630 POKE 841,13
640 POKE 841,13
650 POKE 841,13
660 POKE 841,13
670 POKE 841,13
680 POKE 841,13
690 POKE 841,13
700 POKE 841,13
710 POKE 841,13
720 POKE 841,13
730 POKE 841,13
740 POKE 841,13
750 POKE 841,13
760 POKE 841,13
770 POKE 841,13
780 POKE 841,13
790 POKE 841,13
800 POKE 841,13
810 POKE 841,13
820 POKE 841,13
830 POKE 841,13
840 POKE 841,13
850 POKE 841,13
860 POKE 841,13
870 POKE 841,13
880 POKE 841,13
890 POKE 841,13
900 POKE 841,13
910 POKE 841,13
920 POKE 841,13
930 POKE 841,13
940 POKE 841,13
950 POKE 841,13
960 POKE 841,13
970 POKE 841,13
980 POKE 841,13
990 POKE 841,13

```

Program 1

Silicon Chip

No. 1 FOR ATARI*

Atari 520 ST

GUARANTEE

Our **EXCLUSIVE** Direct Exchange Guarantee is available **FREE OF CHARGE** to all our customers. If a product purchased from **SILICON CHIP** becomes faulty due to a manufacturing or component defect, within **ONE YEAR** of purchase, we will, subject to availability, exchange for new.



SPECS

512K RAM
Expandable Rom
MIDI Interface, RS232
Serial/Centronics Parallel
Interfaces, Floppy Disk and Hard
Disk Interfaces, RGB Video and TV
outputs, Sound Generator with 3 channels,
2 Joystick Ports, 3 Graphics and Text Modes -
320x200 - 512 colours, 640x200 - 4 colours, 640x400 B/W,
16 Bit Motorola 68000 Microprocessor running at 8 MHz.

**SILICON CHIP LTD, Showroom address:
302 High Street, Slough, Berkshire. Tel: 0753 70639**

- * 1st Atari Business Centre.
- * 1st Dealer for 130 XE.
- * 1st Dealer for 1029 Printers.
- * 1st Dealer with our own Software House for Software Support.
- * 1st Dealer for 520 ST

Please phone or write for full details.
(Dealer Enquiries Welcome)

PRICES

ST PACKAGE INCLUDES:

520 ST
1 Meg. Floppy Drive
Hi-Res B/W Monitor
Plus software listed below

£149.99

Basic Logo, GEM WRITE,
GEM PAINT and GEM DOC
Operating Systems.

Final prices and specs may be
subject to change.

POWER WITHOUT THE PRICE

Chipsoft Integrated Accounts
Package -
Including Stock Control,
Nominal, Sales and Purchase
Ledgers **£250**

ST to Centronics Printer Lead

£29.99

ST Modem Lead

£14.99



Part III of MIKE ROWE's series on how to give your program displays the professional touch

An interrupt, in computer terms, is when the computer temporarily stops executing the main program — Basic, machine code or any other language — and executes another program in memory before returning to the original program.

There are several types of interrupt which are useful for different functions, and they can be divided into two types.

NMI — non-maskable interrupts — cannot be disabled by the 6502 processor and include vertical blank interrupts — VBI — display list interrupts — DLI — and Reset.

The VBI occurs during the screen blank after drawing one screen and before starting the next. These occur every 50th of a second.

A DLI can occur after each line is drawn on the screen and takes place in the small delay between drawing each line on the screen.

The other type of interrupt are called IRQ — interrupt requests. These are maskable, which means they can be disabled by the 6502 processor.

There are several timer interrupts, peripheral and serial bus input/output interrupts, the Break key and 6502 Break instructions.

NMIs are handled by the Antic chip while IRQs are handled by the Poky and PIA chips.

But we are only interested in DLIs for now. A DLI can occur every time a line is drawn on the screen. Therefore, because it enables you to have a small program running each time a DLI occurs, it means you can change various parameters as the screen is drawn.

The result of this is that you can change, for example, the colour of any of the registers part way down the screen once or many times.

This allows many more colours to be displayed at once. Other possible uses are to change the character set in use part way down, change sound or music, move players or spit players several times, fire scrolling in different directions — such as in Frogger — and differing screen widths. Any of these without interfering with

It's not at all rude to interrupt...



your main program at all.

All this sounds too good to be true and there has to be a drawback. Well, if you are purely a Basic programmer there is. The interrupts must be in machine code.

However, don't panic. There is no reason why you cannot use DLI routines from other sources in your own program because using them is very easy.

Let's begin by looking at the routine itself, should you decide to try

writing your own. The first point is that timing is critical. Only a relatively short amount of time is available in a DLI, so the routine must be short.

It must start by storing any registers it uses — A, X and Y — on the stack, as the main program will require these back after the interrupt, and it must restore them at the end of the routine.

Also note that many locations for colour or other functions have two locations, the hardware register and the shadow register. In these cases you would normally POKE to the shadow register and the OS transfers the number to the hardware register during the vertical blank.

Any registers changed by the routine should be the hardware registers, not the shadow registers used from Basic.

For example, to change the background colour in Basic you would POKE 712 with a number. This is the shadow of the hardware colour register for the background — \$3074.

However if you POKEd directly to this the operating system would reset it to the value in 712 during the VBI.

This can be used to your advantage in that any colour change in a DLI will be reset to normal each time the screen is redrawn, thus keeping the change just below the DLI.

Any colour change on a line will not occur in a consistent position on that line. This can be overcome by storing the value in \$W57NC — \$4282

Display List

way down a Graphics 0 screen. Note that more than one colour register could have been changed.

The machine code for the DL1 in this program disassembles as shown in Figure 1. This shows a single change of colour. The colour can be

changed several times down the screen.

In Program 8 we increase the colour of the foreground by 4 on each line to produce a multicoloured design.

The next step from this is to make

the colour rotate. Program 11 produces a gradual change in colour rotating up the screen as seen in numerous Atari demos.

Spectacular isn't it? And so easy.

Graphics 0 is rather plain and boring normally. By using a DL1 on each line a spectacular multicolour - 48-colour - Graphics 0 screen can be made as in Program 8. You can alter the colour by changing the Data statements in lines 310 and 330.

Decimal	Hex	Disassembly	
188,22	\$48,18	LDA \$18	Save accumulator on to stack
141,10,212	\$80,0A,04	STA \$040A	Load accumulator with change in colour
141,28,208	\$80,1A,00	STA \$001A	Store in WSYNC
			Store in background hardware register
104	\$68	PLA	Restore accumulator value
64	\$40	TRR	Return from interrupt

Figure 1: Disassembly of DL1

```

30 REM DL1 EXAMPLE 1
40 REM by Mike Snow
50 REM THE FOLLOWING SCREENS 0
60 SCREENS 0
70 SCREENS 000000000000000000000000
80 V=V+1:PRINT V
90 FOR I=0 TO 255:PRINT I:GOTO 100
100 GOTO 100
110 REM DL1 TO SCREEN 0 PAGE 1,0
120 REM DL1 TO SCREEN 0 PAGE 1,0
130 REM DL1 TO SCREEN 0 PAGE 1,0
140 REM DL1 TO SCREEN 0 PAGE 1,0
150 REM DL1 TO SCREEN 0 PAGE 1,0
160 REM DL1 TO SCREEN 0 PAGE 1,0
170 REM DL1 TO SCREEN 0 PAGE 1,0
180 REM DL1 TO SCREEN 0 PAGE 1,0
190 REM DL1 TO SCREEN 0 PAGE 1,0
200 REM DL1 TO SCREEN 0 PAGE 1,0
210 REM DL1 TO SCREEN 0 PAGE 1,0
220 REM DL1 TO SCREEN 0 PAGE 1,0
230 REM DL1 TO SCREEN 0 PAGE 1,0
240 REM DL1 TO SCREEN 0 PAGE 1,0
250 REM DL1 TO SCREEN 0 PAGE 1,0
260 REM DL1 TO SCREEN 0 PAGE 1,0
270 REM DL1 TO SCREEN 0 PAGE 1,0
280 REM DL1 TO SCREEN 0 PAGE 1,0
290 REM DL1 TO SCREEN 0 PAGE 1,0
300 REM DL1 TO SCREEN 0 PAGE 1,0
310 REM DL1 TO SCREEN 0 PAGE 1,0
320 REM DL1 TO SCREEN 0 PAGE 1,0
330 REM DL1 TO SCREEN 0 PAGE 1,0
340 REM DL1 TO SCREEN 0 PAGE 1,0
350 REM DL1 TO SCREEN 0 PAGE 1,0
360 REM DL1 TO SCREEN 0 PAGE 1,0
370 REM DL1 TO SCREEN 0 PAGE 1,0
380 REM DL1 TO SCREEN 0 PAGE 1,0
390 REM DL1 TO SCREEN 0 PAGE 1,0
400 REM DL1 TO SCREEN 0 PAGE 1,0
410 REM DL1 TO SCREEN 0 PAGE 1,0
420 REM DL1 TO SCREEN 0 PAGE 1,0
430 REM DL1 TO SCREEN 0 PAGE 1,0
440 REM DL1 TO SCREEN 0 PAGE 1,0
450 REM DL1 TO SCREEN 0 PAGE 1,0
460 REM DL1 TO SCREEN 0 PAGE 1,0
470 REM DL1 TO SCREEN 0 PAGE 1,0
480 REM DL1 TO SCREEN 0 PAGE 1,0
490 REM DL1 TO SCREEN 0 PAGE 1,0
500 REM DL1 TO SCREEN 0 PAGE 1,0
510 REM DL1 TO SCREEN 0 PAGE 1,0
520 REM DL1 TO SCREEN 0 PAGE 1,0
530 REM DL1 TO SCREEN 0 PAGE 1,0
540 REM DL1 TO SCREEN 0 PAGE 1,0
550 REM DL1 TO SCREEN 0 PAGE 1,0
560 REM DL1 TO SCREEN 0 PAGE 1,0
570 REM DL1 TO SCREEN 0 PAGE 1,0
580 REM DL1 TO SCREEN 0 PAGE 1,0
590 REM DL1 TO SCREEN 0 PAGE 1,0
600 REM DL1 TO SCREEN 0 PAGE 1,0
610 REM DL1 TO SCREEN 0 PAGE 1,0
620 REM DL1 TO SCREEN 0 PAGE 1,0
630 REM DL1 TO SCREEN 0 PAGE 1,0
640 REM DL1 TO SCREEN 0 PAGE 1,0
650 REM DL1 TO SCREEN 0 PAGE 1,0
660 REM DL1 TO SCREEN 0 PAGE 1,0
670 REM DL1 TO SCREEN 0 PAGE 1,0
680 REM DL1 TO SCREEN 0 PAGE 1,0
690 REM DL1 TO SCREEN 0 PAGE 1,0
700 REM DL1 TO SCREEN 0 PAGE 1,0
710 REM DL1 TO SCREEN 0 PAGE 1,0
720 REM DL1 TO SCREEN 0 PAGE 1,0
730 REM DL1 TO SCREEN 0 PAGE 1,0
740 REM DL1 TO SCREEN 0 PAGE 1,0
750 REM DL1 TO SCREEN 0 PAGE 1,0
760 REM DL1 TO SCREEN 0 PAGE 1,0
770 REM DL1 TO SCREEN 0 PAGE 1,0
780 REM DL1 TO SCREEN 0 PAGE 1,0
790 REM DL1 TO SCREEN 0 PAGE 1,0
800 REM DL1 TO SCREEN 0 PAGE 1,0
810 REM DL1 TO SCREEN 0 PAGE 1,0
820 REM DL1 TO SCREEN 0 PAGE 1,0
830 REM DL1 TO SCREEN 0 PAGE 1,0
840 REM DL1 TO SCREEN 0 PAGE 1,0
850 REM DL1 TO SCREEN 0 PAGE 1,0
860 REM DL1 TO SCREEN 0 PAGE 1,0
870 REM DL1 TO SCREEN 0 PAGE 1,0
880 REM DL1 TO SCREEN 0 PAGE 1,0
890 REM DL1 TO SCREEN 0 PAGE 1,0
900 REM DL1 TO SCREEN 0 PAGE 1,0
910 REM DL1 TO SCREEN 0 PAGE 1,0
920 REM DL1 TO SCREEN 0 PAGE 1,0
930 REM DL1 TO SCREEN 0 PAGE 1,0
940 REM DL1 TO SCREEN 0 PAGE 1,0
950 REM DL1 TO SCREEN 0 PAGE 1,0
960 REM DL1 TO SCREEN 0 PAGE 1,0
970 REM DL1 TO SCREEN 0 PAGE 1,0
980 REM DL1 TO SCREEN 0 PAGE 1,0
990 REM DL1 TO SCREEN 0 PAGE 1,0

```

Program 7

```

30 REM DL2 EXAMPLE 1
40 REM by Mike Snow
50 REM SCREENS 0 PAGE 1,0 PAGE 1,0
60 REM SCREENS 0 PAGE 1,0 PAGE 1,0
70 REM SCREENS 0 PAGE 1,0 PAGE 1,0
80 REM SCREENS 0 PAGE 1,0 PAGE 1,0
90 REM SCREENS 0 PAGE 1,0 PAGE 1,0
100 REM SCREENS 0 PAGE 1,0 PAGE 1,0
110 REM SCREENS 0 PAGE 1,0 PAGE 1,0
120 REM SCREENS 0 PAGE 1,0 PAGE 1,0
130 REM SCREENS 0 PAGE 1,0 PAGE 1,0
140 REM SCREENS 0 PAGE 1,0 PAGE 1,0
150 REM SCREENS 0 PAGE 1,0 PAGE 1,0
160 REM SCREENS 0 PAGE 1,0 PAGE 1,0
170 REM SCREENS 0 PAGE 1,0 PAGE 1,0
180 REM SCREENS 0 PAGE 1,0 PAGE 1,0
190 REM SCREENS 0 PAGE 1,0 PAGE 1,0
200 REM SCREENS 0 PAGE 1,0 PAGE 1,0
210 REM SCREENS 0 PAGE 1,0 PAGE 1,0
220 REM SCREENS 0 PAGE 1,0 PAGE 1,0
230 REM SCREENS 0 PAGE 1,0 PAGE 1,0
240 REM SCREENS 0 PAGE 1,0 PAGE 1,0
250 REM SCREENS 0 PAGE 1,0 PAGE 1,0
260 REM SCREENS 0 PAGE 1,0 PAGE 1,0
270 REM SCREENS 0 PAGE 1,0 PAGE 1,0
280 REM SCREENS 0 PAGE 1,0 PAGE 1,0
290 REM SCREENS 0 PAGE 1,0 PAGE 1,0
300 REM SCREENS 0 PAGE 1,0 PAGE 1,0
310 REM SCREENS 0 PAGE 1,0 PAGE 1,0
320 REM SCREENS 0 PAGE 1,0 PAGE 1,0
330 REM SCREENS 0 PAGE 1,0 PAGE 1,0
340 REM SCREENS 0 PAGE 1,0 PAGE 1,0
350 REM SCREENS 0 PAGE 1,0 PAGE 1,0
360 REM SCREENS 0 PAGE 1,0 PAGE 1,0
370 REM SCREENS 0 PAGE 1,0 PAGE 1,0
380 REM SCREENS 0 PAGE 1,0 PAGE 1,0
390 REM SCREENS 0 PAGE 1,0 PAGE 1,0
400 REM SCREENS 0 PAGE 1,0 PAGE 1,0
410 REM SCREENS 0 PAGE 1,0 PAGE 1,0
420 REM SCREENS 0 PAGE 1,0 PAGE 1,0
430 REM SCREENS 0 PAGE 1,0 PAGE 1,0
440 REM SCREENS 0 PAGE 1,0 PAGE 1,0
450 REM SCREENS 0 PAGE 1,0 PAGE 1,0
460 REM SCREENS 0 PAGE 1,0 PAGE 1,0
470 REM SCREENS 0 PAGE 1,0 PAGE 1,0
480 REM SCREENS 0 PAGE 1,0 PAGE 1,0
490 REM SCREENS 0 PAGE 1,0 PAGE 1,0
500 REM SCREENS 0 PAGE 1,0 PAGE 1,0
510 REM SCREENS 0 PAGE 1,0 PAGE 1,0
520 REM SCREENS 0 PAGE 1,0 PAGE 1,0
530 REM SCREENS 0 PAGE 1,0 PAGE 1,0
540 REM SCREENS 0 PAGE 1,0 PAGE 1,0
550 REM SCREENS 0 PAGE 1,0 PAGE 1,0
560 REM SCREENS 0 PAGE 1,0 PAGE 1,0
570 REM SCREENS 0 PAGE 1,0 PAGE 1,0
580 REM SCREENS 0 PAGE 1,0 PAGE 1,0
590 REM SCREENS 0 PAGE 1,0 PAGE 1,0
600 REM SCREENS 0 PAGE 1,0 PAGE 1,0
610 REM SCREENS 0 PAGE 1,0 PAGE 1,0
620 REM SCREENS 0 PAGE 1,0 PAGE 1,0
630 REM SCREENS 0 PAGE 1,0 PAGE 1,0
640 REM SCREENS 0 PAGE 1,0 PAGE 1,0
650 REM SCREENS 0 PAGE 1,0 PAGE 1,0
660 REM SCREENS 0 PAGE 1,0 PAGE 1,0
670 REM SCREENS 0 PAGE 1,0 PAGE 1,0
680 REM SCREENS 0 PAGE 1,0 PAGE 1,0
690 REM SCREENS 0 PAGE 1,0 PAGE 1,0
700 REM SCREENS 0 PAGE 1,0 PAGE 1,0
710 REM SCREENS 0 PAGE 1,0 PAGE 1,0
720 REM SCREENS 0 PAGE 1,0 PAGE 1,0
730 REM SCREENS 0 PAGE 1,0 PAGE 1,0
740 REM SCREENS 0 PAGE 1,0 PAGE 1,0
750 REM SCREENS 0 PAGE 1,0 PAGE 1,0
760 REM SCREENS 0 PAGE 1,0 PAGE 1,0
770 REM SCREENS 0 PAGE 1,0 PAGE 1,0
780 REM SCREENS 0 PAGE 1,0 PAGE 1,0
790 REM SCREENS 0 PAGE 1,0 PAGE 1,0
800 REM SCREENS 0 PAGE 1,0 PAGE 1,0
810 REM SCREENS 0 PAGE 1,0 PAGE 1,0
820 REM SCREENS 0 PAGE 1,0 PAGE 1,0
830 REM SCREENS 0 PAGE 1,0 PAGE 1,0
840 REM SCREENS 0 PAGE 1,0 PAGE 1,0
850 REM SCREENS 0 PAGE 1,0 PAGE 1,0
860 REM SCREENS 0 PAGE 1,0 PAGE 1,0
870 REM SCREENS 0 PAGE 1,0 PAGE 1,0
880 REM SCREENS 0 PAGE 1,0 PAGE 1,0
890 REM SCREENS 0 PAGE 1,0 PAGE 1,0
900 REM SCREENS 0 PAGE 1,0 PAGE 1,0
910 REM SCREENS 0 PAGE 1,0 PAGE 1,0
920 REM SCREENS 0 PAGE 1,0 PAGE 1,0
930 REM SCREENS 0 PAGE 1,0 PAGE 1,0
940 REM SCREENS 0 PAGE 1,0 PAGE 1,0
950 REM SCREENS 0 PAGE 1,0 PAGE 1,0
960 REM SCREENS 0 PAGE 1,0 PAGE 1,0
970 REM SCREENS 0 PAGE 1,0 PAGE 1,0
980 REM SCREENS 0 PAGE 1,0 PAGE 1,0
990 REM SCREENS 0 PAGE 1,0 PAGE 1,0

```

Program 8

**8-PAGE
SPECIAL
FEATURE**



THE 520 ST HAS LANDED

THE 520ST is about to take its first public bow amid scenes never before witnessed in the micro industry anywhere in the world.

In the UK alone some 80 software houses have been working around the clock to launch programs on the ST barewagon.

A similar number of com-

panies have already committed themselves to the new machine States-wide - making this the biggest pre-launch build up ever seen.

Billed as revolutionary both in power and price, the 520ST has already lived up to its name in the opinion of all leading British computer magazine reviewers. According to them

it is no longer just a new machine, but THE machine for 1985 and the foreseeable future.

The 520ST has caught the imagination of both the industry and the critics alike. And after its formal launch at this month's PCW Show it is expected to take the buying public by storm...

The race is on to provide a wide range of ST goodies

SOFTWARE publisher Telen is converting Lord Kingsley of Dul for the ST.

The text adventure is set in real time, has hundreds of locations and a large vocabulary, and many traps, tasks, puzzles and ruses.

The company also plans to bring out *Starfire*, a data management system with new techniques of user interfacing to offer a wide range of facilities without the need for programming.

It will run under the GEM operating system for single file applications - lists, medical records, personal histories, credit and stock records, on single card index.

Profile is menu-driven, integrated with the GEM environment of icons, drop-down menus and mouse, and uses variable sized overlapping windows.

Data entry is of the keyboard, with most other operations, in mouse-driven. Optional in-mouse-driven, optional in-mouse help windows prompt the user at every stage with no programming languages required.

The record card is user-defined, can be of any size up to the limit of a single screen, and can hold a number of fields such as numbers, dates, class variables and strings.

Telen intends to demonstrate both programs at the PCW Show.

A MUSIC system and a flight simulator for the ST have been privatised by Island Logic. Enough on price or release dates have been set.

The music system will be similar to Island Logic's BBC and Commodore version "but GEM will be a lot more elegant in a window-based ST system".

The flight simulator will make users feel they are "flying over real landscapes, thanks to the ST's graphics capabilities, says the company.

LANGUAGES are in the pipeline in Metacom and should be ready for demonstration at the PCW Show.

The company will bring out a full C compiler, ISO standard Pascal, macro assembler and full Lisp compiler for the ST.

An Atari development kit, consisting of one language plus editor, manual and example programs, will retail for about £80, says Metacom's Peter Mackintosh.

EXPECTED to be available to the public in late October is Computer One's version of C with a source debugger, assembler and full screen line-type editor making full use of GEM.

The company is also considering porting its G1 monitor screen to the ST. "It should be quite impressive with windowing facilities", says Computer One's Chris Bentley.

The C language package will be demonstrated at the PCW Show.

ORIS Software will almost certainly be bringing out a comprehensive assembler and translator to operate with the assembler to simulate a logic analyser.

The company may also do Atari ST versions of its graphics utilities like *Matrix Lightning*, and will be aiming to get at least one ST product on the market for Christmas.

FIREBIRD won't talk about a **GOOD** version of the best selling cult game *Elite* - Accessoft's hold over the name complicates any plans. The ST-oriented software house may have for an Atari version.

But Firebird has commissioned an independent author to write an ST game it hopes will be just as good.

This substantial project,

which has the working title *Star Glider*, should be released early next year, says Firebird's Herbert Wright.

"It has a lot more wit than the usual arcade or adventure game, including some pretty flashy graphics".

Some of the work that has already been done on it will be demonstrated at the PCW Show.



MICRODEAL

THE race between the software houses to announce the first program for the S208T has been won by Microdeal of Cornwall. It has topped some 80 other companies to the post with the news that its arcade adventure game, Lords of Havoc, is to be released this September.

This came only a matter of weeks after Atari made development systems for the new machine available. Atari User asked Micro-

deal's John Barnes how his company was able to be so quick off the mark.

"Lords of Havoc was already available for the Commodore and the QL", he explained, "and although we took a year to develop the game the program was written on a Vax mini computer so we could easily adapt it for the Atari".

It was the success of the original version which resulted in it moving over to the

S208T. "Atari asked us to bring the game to them", revealed John Barnes. "They must have been impressed because once they saw what it was like they agreed to provide us with a development system".

Lords of Havoc boasts 2,000 screens. The object is to bring about the downfall of the Dark Lords who have turned the once beautiful land into a place of desolation. The disc costs £10.95.

QUEST International is working on two major business software packages. Both conversions of proven programs.

Cash Tracker, an accounting package designed for smaller businesses, should be ready for demonstrating at the PCW show. The ST version is likely to cost less than the £185 price tag on previous versions.

The Padlock business control system, a fully integrated five module accounts package is two thirds ready for the ST, says Queens's Daniel McNaught.

It will cost less than the £1,240 charged for other versions.

McNaught says Quest is committed to producing business software for smaller firms and has a vested interest in designing programs for the ST.

An ST version of its 8-bit Atari light synthesizer Colospace is being developed by Lemsach.

The multi-coloured special-effects generator is operated by a combination of keyboard and joystick to produce the kind of light shows seen at rock concerts.

The planned synthesizer for the ST should provide even more spectacular displays, says Lemsach.

SCHEDULED to be on sale early next year is an "extremely large and complex game" for the ST from Microsoft.

The program is "very heavily into graphics capabilities of the S208T, and involves several simulations in a war type scenario", a spokesman said.

A NEW page make-up system for the ST, to be called the Pixel Screen Editor, is being developed by Microsoft.

The complete stack it will drive a full phototypesetting system and will include full graphics and the ability for users to develop their own illustrations.

Due for release in March 1988, and costing in the region of £80, it has been developed by Jill Zauth, who was primarily responsible for the software being used to generate page make-up for the Mirror Group of newspapers.

Microsoft says they are definitely planning further developments for the ST, believing it to be a major machine in 1988. A third simulator is already planned.

PROGRAM development aids for professionals and the serious hobbyist are on the way from GBT Computer Systems.

The company is porting its successful C compiler, macro assembler and linker from the QL.

The first ST product will encompass all three components and the company is also likely to issue the macro assembler and linker together at a later date, says GBT's Chris Graybell.

Prices should be announced at the PCW Show.

The firm is almost certainly going to produce a low cost GEM toolkit, which should be out before Christmas, and has plans for cross-compiler tools to help the smaller software houses.

A POWERFUL communications package available from late September is promised by Kuma Computers.

The "all encompassing" software will handle all types of electronic communications including MicroLink, Telecom Gold, Bulletin Boards, Faxnet and file transfer.

Also available at the same time will be word processing, spreadsheet and database

software with some very nice features, says the company.

Kuma has been working in 68000 machine code for a couple of years and is really impressed with the S208T.

Languages and other tool box software is well along the pipeline too, the spokesman said.

The first Kuma products for the ST will be demonstrated at the PCW Show.

**Watch Atari User every month
for all the latest ST news**



A FORMER mixer who first became interested in computers through playing arcade games in pubs is the author of Microdeal's Lands of Havoc.

Steve Bak of Mansfield graduated from copying letters to writing computer programs in six machine languages.

Now his former credits include the Earthart series - well known to Dragon and Commodore 64 users - and Sizzamite for the Tandy colour computer.

But how did he go about creating a program such as Lands of Havoc? Bak told Atari User:

"The first stage involves a lot of sitting down and thinking while an idea comes to you. Once the idea is there you have to think about structuring the game so it is both interesting and progressive to play.

"Presentation is the next thing to worry about, how the game should appear on screen. The story line also needs filling in".

This stage took Bak four months, working 80 hours a week, "plus spending a few hours of other people's time". It was at this point he realised the game would not be able to compete with many other bigger games on the market for it then only had 80 screens.

He enlarged it by developing the storyline further and eventually added another 1,822 screens. This part was not a solo effort, however.

"I try to involve people who are not

How an ST game is born

programmers as a scientific mind usually sees things in black and white, whereas non-programmers seem more creative and are able to add to a story", he said.

Only then did Bak start the actual programming. The original game for the Commodore took three months, the Spectrum version two, and the latest, for the ST, another two.

Bak had to write routines for every step of the game.

"I do not write more than 100 lines a night so I am fresh enough to go through it all at the end to ensure there are no bugs", he says.

"The last stage is fitting each small routine into a whole, fully integrated program, then passing it on for others to pick it pieces.

"If they believe there are any problems I sort them out and, when everyone is satisfied, turn out the final program and put it in Microdeal's hands while I sit back.

"And that's how the 5205T version of Lands of Havoc was born"



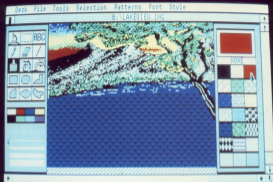
IT'S A REAL GEM OF AN IDEA

THOSE who have followed Digital Research's fortunes from the launch of CP/M in 1975 through to Concurrent PC-DOS in 1984 will appreciate that as a systems house, we have so far specialised in languages and operating-system products for the industry.

However, we are taking a different approach with GEM because it is a user interface which is compatible with a wide range of applications, operating systems, languages and hardware.

GEM will have more impact on the end-user market than any other product which we, or any other

Frank Iversen is Director, European European Operations, Digital Research (UK).



By FRANK IVESON

Article went made easy with GEM application packages

software houses, have so far produced.

A working definition of the term "user interface" is "the repository of commands a user needs to know to make his or her machine work to satisfaction".

Command repositories which require the memorization of obscure sequences of keystrokes are difficult to retain and the full power of the system may never be fully appreciated by the non-technical user.

This is true of the command structures of CP/M, MS-DOS, PC-DOS and especially of some variants of Unix, which contain certain innocent-looking commands which can destroy the integrity of the system if used at the wrong time.

There is also confusion among users who regularly work at different machines. Often a user has to

interrupt work to decide if the command he or she is about to enter does in fact belong to the system in use.

More resistance to personal computer use stems from the obscurity factor than any other non-cost consideration - especially among women.

Menu-driven applications are also affected by obscurity. Menus provide more clues than commands, but a major difficulty for the novice is the disappearance of the subject matter from the screen while choosing a menu option. Even for experienced users, this causes continuing frustration with the software. Users are ready for something better.

The GEM user interface remedies these frustrations and eliminates obscurity. More than 50 software

houses have stated their intention to publish GEM-based packages by the end of the current year.

Among these are Chang Labs, Comsoft, Pegasus, Thorn EMI Computer Software, Lintrae, Itebeam and ABC Software.

The available GEM applications include GEM Desktop, which replaces operating system commands, an advanced word processor, GEM Write, graphics programs such as GEM Graph and GEM Draw and several business packages including SP's well-known Open Access suite.

The \$200T is now shipping with Desktop, GEM Paint and DR Logo under GEM. GEM Paint is a drawing and design package and DR Logo is the Digital Research version of Logo.

which won a European computer press award presented last year by West Germany's Chip magazine.

The fundamental research behind the GEM concept was done in the early '70s by Xerox PARC in the US and was first implemented on Xerox's Star network, and later by Apple on Lisa and Macintosh. GEM is therefore based on a long history of user experience.

Xerox's recent commitment to GEM is a further indication of the maturity of the product, and reinforces the approach of this special interface as an industry standard.

GEM Desktop, the operating system metaphor, is the first GEM application that most users will come across. Visually, its screen resembles a bird's-eye view of a desk, with documents, folders, disc drives and a rubbish bin. These objects are called icons.

Analogues of real world accessories such as calculators and clocks are also available. At the top of the screen is a menu bar.

In GEM Desktop and all other GEM applications the user selects a resource by using a mouse or the cursor keys to move a pointer on the screen over an icon or desk accessory.

Clicking the mouse – or keyboard equivalent – selects the resource represented. Moving the pointer to a command on the menu bar causes a sub-menu to drop down into the top quarter of the screen.

Thus, in GEM Desktop, selecting a disc drive icon and moving the pointer to the File command on the menu bar reveals the File dropdown menu. Clicking on the command Open in this dropdown menu displays the contents of the drive in a directory window, and the dropdown menu disappears.

The directory window contains more icons – named folders and documents, representing files and applications.

By moving the pointer over a folder and clicking, the folder is selected. Repeating the menu bar procedure as above, or double clicking, opens up the folder into a second icon-filled window which overlaps the first and contains a catalogue of the folder contents.

Pointer movements can delete or save files and groups of files in the window by dragging them to the rubbish bin or to a disc drive, can change the sizes of the desktop area and the windows and can scroll their contents.

They select the whole range of commands available in Desktop via

AT&T's decision to bundle the SPOST with GEM has been described as a brilliant marketing ploy by UK computer market observers.

This is due to the fact that GEM allows the 37 to offer similar working environments to machines like the Macintosh which are more than double the price.

Even the market leading IBM is getting in on the act. GEM is currently available in 70 retail applications for the IBM PC.

Meanwhile the number of major manufacturers who have become licensed to distribute GEM and GEM applications with their machines has risen to more than 20.

the menu bar and dropdown menus. No command has to be typed in, or memorised. Errors are explained in full in dialogue boxes which contain options for recovery.

For drawing and painting applications, use of a bitpad or tablet and pen are even more intuitive to users.

Having mastered the simple skills of hand and eye co-ordination in moving the pointer with the mouse or other pointer device, the user has only to become familiar with the simple logic of GEM's visual command structure in Desktop to know how to get started with all other applications, because GEM is a highly consistent user interface.

Non-GEM applications coexist with GEM applications written to the same operating system. Running a non-GEM application is simply a matter of opening the appropriate application folder icon, when control

is handed back to DOS and the application runs normally.

Co-existence is possible because the functionality of GEM software is based on a system extension which does not interfere with the workings of the underlying operating system.

The GEM system extension and GEM software can be implemented on any 16 and 32 bit CPU configuration, for CP/M, MS-DOS, PC-DOS and Concurrent DOS operating systems.

GEM's applicability to a wide range of hardware configurations and operating systems will help good GEM applications to spread fast from one machine to another and/or between operating systems.

Moving GEM itself to another machine only requires minor modifications to peripheral parts of the GEM software.

For example, a software developer wishing to move an application written for the Macintosh's 68000 environment to a more popular computer, need only implement minor modifications of subroutine calls to convert it to GEM, followed by recompilation for another operating system.

Because IBM dominates the personal computer market, other manufacturers, software houses, dealers and users all need a standard IBM compatible user interface. GEM is such a standard and it will migrate to all conceivable 16 and 32 bit configurations of the future.

In the US, amid claims made by Microsoft's Windows and IBM's Topview, GEM Desktop is the only machine-independent icon based user interface on the market and selling in volume.

Speeding applications

To speed the development of versions of GEM applications by manufacturers and software developers, Digital Research has introduced the GEM Programmer's Toolkit.

The Toolkit itself uses a GEM interface, and programmers are pleased with it. They expect the graphics to be slow, but in fact GEM's fast code doesn't sacrifice performance.

The Toolkit allows programmers to interactively design GEM icons and other objects without resorting to back-of-envelope calculations or special coding. With Toolkit's icon editor, for example, the programmer paint and edit an object at the pixel level until satisfied, and the Toolkit

generates the code automatically.

Similarly, text for custom dialogue boxes is installed simply by typing it in, using any of the major West European languages whose character set is supported by the operating system in question.

GEM applications are also possible in a number of high-level languages for which the Toolkit can be equipped.

Demonstration programs may be produced in a matter of days, and full-scale implementations within a few months.

The Toolkit also comes with good licensing agreements allowing software houses and manufacturers to bundle GEM Desktop with their own applications or machines.

THE ST has many remarkable features, not least of all its operating system. To most users, the ST is controlled by the GEM - Graphics Environment Manager - and that is the means by which users will communicate with the machine.

However, buried away from sight is the TOS - Transient Operating System - or what most people understand to be a DOS - disc operating system. When the ST is booted up, which at the moment is done from the TOS system disc, the machine not only loads the TOS into RAM but also loads the GEM Desktop, which is the screen that appears when loading is complete.

The name "TOS system disc" is slightly misleading, as you can see, because it contains far more than merely the TOS.

Despite the name TOS and the state of the art hardware, the DOS is in fact a virtual clone of CP/M 80k. I say virtual as there are differences which are not strictly part of CP/M and it would appear to mix in some of the better features of MS-DOS. But more of that later.

Designed by Digital Research, CP/M 80k, as its name suggests, is a version of CP/M which runs on a 68000 processor, the chip at the heart of the ST.

Now all this may seem to be confusing. Which is the operating system - GEM or TOS?

To understand the function of these systems it's important to realise the purpose of a DOS. Stated simply, it is a program, or more accurately a number of programs, that process commands inside the micro.

As these operations are related to accessing the disc drive, though not exclusively, the term is DOS rather than OS - operating system.

The function of the DOS is to see that commands and files of data are processed and in general take away from the user the headaches of what is happening inside the machine.

From the user's point of view, the DOS is a convenient method of helping him to manage his files on disc.

The means of control are by typing a command line, say, DIR, for a directory of files. But as useful as that is, systems like CP/M have not been renowned for their friendliness. Command lines like:

RIP B&A.*

are not quick to type, nor are they immediately obvious. The above command line merely tells the system to copy all files from disc drive A to drive B. And this is what salesmen have called user-friendly systems...

To make life easier, these functions of a DOS - copying, formatting, and so on - are presented by a GEM

* Jeremy Vine is a freelance writer and author of several books including one on the Atari ST. The ST Companion.

JEREMY VINE
digs deep into
the inner
workings of the
Atari 520ST to
explain the
interaction of
TOS and GEM

One OS - or two?

system in pictures, or to be more accurate, icon graphics.

Just point the mouse, drag the icons, click and the files are copied. OK, so far, but if the GEM system does all this why bother with the TOS? Well it's not quite as simple as I've made out so far.

The TOS is far more complicated, and those developing professional software will need the command facilities of TOS to probe the inner depths of the machine.

Unfortunately for the enthusiastic user, Atari has not made this easy and there is no straightforward method of entering TOS.

But more importantly, the TOS is THE operating system of the ST. GEM is merely a second level operating system which is under the control of TOS and the ST.

GEM DOS, also developed by Digital Research, needs certain requirements in order to work.

At least 128k of RAM is needed and of course the 520ST meets this more than adequately. This requirement explains why the 130ST - 128k RAM - has not and might not be released.

Atari has the intention of placing the TOS and GEM system in ROM,

within the machine. This would of course release valuable space within the memory and increase speed.

Although the requirement is for a minimum 128k, the TOS and GEM Desktop together on the system disc account for around 200k of code. This also explains why the machine takes about 30 seconds to boot.

The TOS is an interesting beast as it is not quite one thing or the other.

A first glance at it suggests that it is merely a copy of CP/M 80k and considering DR's involvement in the entire package - GEM and LOGO - this would hardly be surprising.

But unlike CP/M 80k the filing system can be hierarchical, which is a definite improvement. This feature is reminiscent of MS-DOS and is more than just a nice touch.

The GEM Desktop allows the user to open different folders for storage of files. These folders are in effect sub-directories under the main directory.

This can be seen if opening a folder from within a present directory. The window displays shows the contents within that folder - sub-directory - and closing the window returns the

user to the directory above. In this way a hierarchical directory structure can be created.

As GEM has this structure the parent DOS – as I will refer to TOS – also has a hierarchical nature. So it is more than just cosmetic. Creating directories within directories is a convenient method of splitting up and finding files.

But what else happens when you boot up the machine with the system disc?

The purpose of booting the ST is not only to load TOS and GEM but to initialise the entire system and carry out certain status checks.

These determine what kind of monitor is being used – mono, colour and so on – whether there are applications in cartridge memory that can be run, that is, a cartridge is inserted, setting various registers to default values, and a host of other vital functions.

Of course this is transparent to the user and all you will see is the pretty desktop display once booted or the particular application if using a cartridge.

The status of the desktop can be saved at any point and this is stored in a file called DESKTOP.INF. This contains all the startup conditions of the desktop, these being the number of windows open – if any – their positions on the screen, which directory to access and the labels assigned to the disc identifiers.

It also provides information to the system about the way in which an application should be run. This



information is set up by the user with the INSTALL APPLICATION option on the desktop screen.

And that just about concludes this brief look at the TOS and GEM.

Fortunately for the user, these two systems work in unison and together provide a powerful and easy means of control over the main operations of the micro.

The overall manager is the TOS,

with the GEM system as a second level operating system.

GEM is the friendly face of the ST and the one part of the ST all users will come to know and understand well, but behind the icons and windows is another system which maintains order within the machine.

A case of two systems in perfect harmony – well, that's the theory anyway...

American software on the move

NEWS of exciting software being developed for the Atari ST is beginning to filter through from the United States.

Noted producer of the best-selling DB Master database, StoneWare, has reacted in agreement with Atari Corp to develop a new filing program for the ST. The company promises it will be "extremely easy for the entry level home or business user".

Users will be able to select colours and change fonts, as well as lay out files to suit individual needs.

Microsoft is developing the Omega telecommunication package for the ST and relating E-Mail Atari computers. It will have icons, windows and pull-down menus and will use either a mouse or joystick.

The 16-bit program is expect-

ed to cost about \$50. Microsoft is also developing a 3D battles-game for the ST.

Spiralizer Software expects to have eight products for the ST shortly. These are believed to be adventure games. Infocom is planning to convert its entire line of text adventures.

And Sierra On-Line intends to bring out top-selling favourites King's Quest and Ultima II for the new machine.

Getting in first

AN unsurprising UK distributor was Transatlantic to ensure it would be the first company to be able to deliver software for the S20ST. Faced with the

prospect of shortages here for some time to come, Software Express managed to import programs from Haba Systems of Van Nuys, California, itself breaking new ground as the initial company to produce software for the new machine Stateside.

The distributor's first assignment, which was due to arrive in August, included Haba Check Minder, HabaCom and Haba Hippo 'C'.

Check Minder is a money manager program which enables the user to monitor income and expenses and prepare tax returns.

The second, HabaCom, is a telecommunication program which supports terminal emulation, direct link to the computer, and VT100, TTY/CRT and full/half duplex baud rates.

Haba Hippo 'C', the third program, is a complete language system consisting of compiler, assembler and linker. It supports GEM DOS calls and functions.

Depending on the rate of exchange between the two countries, prices for Check Minder and HabaCom are expected to be around £50, while Hippo 'C' will cost in the region of £90.

This month Software Express is expecting delivery of two more programs – HabaSoft, a word processor with large document capabilities, and HabaCalc, a versatile spreadsheet. Prices have yet to be fixed.

The company is currently negotiating for more American software for the ST but the deals have yet to be finalised.



ATARI ST

^520ST

POWER WITHOUT THE PRICE
THE NEW ATARI ST

ATARI 520ST SPECIFICATION

PROCESSOR
68010 (16MHz)
68011 (16MHz)
68012 (16MHz)
68015 (16MHz)
68016 (16MHz)
68017 (16MHz)
68018 (16MHz)
68019 (16MHz)
68020 (16MHz)
68021 (16MHz)
68022 (16MHz)
68023 (16MHz)
68024 (16MHz)
68025 (16MHz)
68026 (16MHz)
68027 (16MHz)
68028 (16MHz)
68029 (16MHz)
68030 (16MHz)
68031 (16MHz)
68032 (16MHz)
68033 (16MHz)
68034 (16MHz)
68035 (16MHz)
68036 (16MHz)
68037 (16MHz)
68038 (16MHz)
68039 (16MHz)
68040 (16MHz)
68041 (16MHz)
68042 (16MHz)
68043 (16MHz)
68044 (16MHz)
68045 (16MHz)
68046 (16MHz)
68047 (16MHz)
68048 (16MHz)
68049 (16MHz)
68050 (16MHz)
68051 (16MHz)
68052 (16MHz)
68053 (16MHz)
68054 (16MHz)
68055 (16MHz)
68056 (16MHz)
68057 (16MHz)
68058 (16MHz)
68059 (16MHz)
68060 (16MHz)
68061 (16MHz)
68062 (16MHz)
68063 (16MHz)
68064 (16MHz)
68065 (16MHz)
68066 (16MHz)
68067 (16MHz)
68068 (16MHz)
68069 (16MHz)
68070 (16MHz)
68071 (16MHz)
68072 (16MHz)
68073 (16MHz)
68074 (16MHz)
68075 (16MHz)
68076 (16MHz)
68077 (16MHz)
68078 (16MHz)
68079 (16MHz)
68080 (16MHz)
68081 (16MHz)
68082 (16MHz)
68083 (16MHz)
68084 (16MHz)
68085 (16MHz)
68086 (16MHz)
68087 (16MHz)
68088 (16MHz)
68089 (16MHz)
68090 (16MHz)
68091 (16MHz)
68092 (16MHz)
68093 (16MHz)
68094 (16MHz)
68095 (16MHz)
68096 (16MHz)
68097 (16MHz)
68098 (16MHz)
68099 (16MHz)
68100 (16MHz)

MEMORY
512K (expandable to 1024K)
16K cache

DISK DRIVE
5.25" floppy disk drive

MONITOR
12" color monitor

KEYBOARD
Full size keyboard

MOUSE
Two button mouse

SOFTWARE
Atari 520ST operating system
Atari 520ST graphics library
Atari 520ST sound library
Atari 520ST file manager
Atari 520ST word processor
Atari 520ST spreadsheet
Atari 520ST database
Atari 520ST graphics editor
Atari 520ST sound editor
Atari 520ST file manager
Atari 520ST word processor
Atari 520ST spreadsheet
Atari 520ST database
Atari 520ST graphics editor
Atari 520ST sound editor

MAGINTOSH v F16 v 520ST

	APPLE II/III/III+	APPLE II/III/III+	ATARI
Processor	68000	68000	68010
Cache	None	None	16K
RAM	128K	128K	512K
Expansion	Yes	Yes	Yes
Monitor	12" monochrome	12" monochrome	12" color
Keyboard	Full size	Full size	Full size
Mouse	None	None	Two button
Software	Basic	Basic	Operating system, graphics library, sound library, file manager, word processor, spreadsheet, database, graphics editor, sound editor
Price	£2,895	£1,895	£749

The Atari 520ST is a true 32-bit computer, offering the power and performance of a 32-bit system at a price that is truly remarkable. With its advanced 68010 processor and 16MHz speed, the Atari 520ST can handle the most demanding tasks with ease. Its 512K of RAM (expandable to 1024K) and 16K cache provide the memory needed to run complex applications. The Atari 520ST is also a true color computer, with its 12" color monitor providing a vibrant and detailed display. The Atari 520ST is a true 32-bit computer, offering the power and performance of a 32-bit system at a price that is truly remarkable.

USER FRIENDLY GEM OPERATING SYSTEM
The Atari 520ST's Gem operating system is a true graphical user interface, making it easy for anyone to use. With its intuitive design and powerful features, Gem provides a true 32-bit computing experience. The Atari 520ST's Gem operating system is a true graphical user interface, making it easy for anyone to use. With its intuitive design and powerful features, Gem provides a true 32-bit computing experience.

FREE SOFTWARE AND FUTURE EXPANSION
The Atari 520ST comes with a wealth of free software, including the operating system, graphics library, sound library, file manager, word processor, spreadsheet, database, graphics editor, and sound editor. This software is designed to provide a true 32-bit computing experience. The Atari 520ST also offers future expansion options, including additional RAM, disk drives, and monitors.

- Price shown (FREE delivery) £749. Price of the price included:
- + 512K RAM
 - + MOUSE
 - + GEM
 - + 8" W MONITOR
 - + 500K 5.25" DISK DRIVE
 - + KEYBOARD (85 KEYS)

ATARI 520ST SPECIFICATION
The Atari 520ST is a true 32-bit computer, offering the power and performance of a 32-bit system at a price that is truly remarkable. With its advanced 68010 processor and 16MHz speed, the Atari 520ST can handle the most demanding tasks with ease. Its 512K of RAM (expandable to 1024K) and 16K cache provide the memory needed to run complex applications. The Atari 520ST is also a true color computer, with its 12" color monitor providing a vibrant and detailed display. The Atari 520ST is a true 32-bit computer, offering the power and performance of a 32-bit system at a price that is truly remarkable.

PRESS COMMENT

The Atari 520ST is a true 32-bit computer, offering the power and performance of a 32-bit system at a price that is truly remarkable. With its advanced 68010 processor and 16MHz speed, the Atari 520ST can handle the most demanding tasks with ease. Its 512K of RAM (expandable to 1024K) and 16K cache provide the memory needed to run complex applications. The Atari 520ST is also a true color computer, with its 12" color monitor providing a vibrant and detailed display. The Atari 520ST is a true 32-bit computer, offering the power and performance of a 32-bit system at a price that is truly remarkable.

SILICA SHOP
WE ARE THE UK'S #1 ATARI SPECIALISTS

SILICA HOTLINE 01-309 1111

SILICA SHOP LTD, 1-4 The Mews, Mathew Road, Solihull, West, B37 4YU
SEND FOR FREE ATARI ST LITERATURE

PLEASE SEND ME FREE LITERATURE
ON THE NEW ATARI 520ST COMPUTER

Name

Address

Postcode

By post please send a stamped envelope with this form.



FEELING a bit peckish one afternoon, Horace, a friendly Blob creature, wanders off in search of food. There's not a bite to eat to be found anywhere, so after a short while he decides to risk entering the maze monsters' den.

He's in luck, the ground is covered with crumbs left over after one of their great feasts. The sight of all those tasty morsels makes Horace completely forget about the monsters until they start to chase him.

Can you help Horace collect the crumbs and avoid the monsters? Be careful, though - the monsters are out to make a meal of Horace if they can catch him....

Maze March is a fast arcade game to sharpen up your reflexes and get the adrenalin flowing. You start with three lives on screen and the difficulty increases with each screen cleared. Your best score is recorded in a high-score table.

If you find it too easy or too



Maze Munch

If you've got an appetite for a fast moving maze game then help Horace munch the morsels in this action-packed game by **ROLAND WADDILOVE**

head, the difficulty can be changed by altering L in line 4210. The higher the number the harder it is.

There are several features to interest programmers, so it's not just for games players. A smart machine code routine is used for all printing. This prints the multicoloured characters used by directly writing to screen RAM.

If you want to see how it works you can use Kevin Edwards' disassembler which was in the July issue of *Atari User*. The code is stored in page 6 in the memory starting at 1030.

A fast tune accompanies the high score table, instructions and title page.

The high score routine shows how to sort numbers and strings in Atari Basic.

The program has been broken down into short subroutines as usual and is as structured as possible. A title at the start of each subroutine describes its function so it should be fairly easy to follow.

VARIABLES

C-H	The monsters' coordinates.
L	Level of difficulty.
X,Y	Your coordinates.
SCREEN	Screen number.
DOTS	Number of dots left.
OR	A flag to show whether you're OK.
NAME\$1\$1	Names in the high score table.
H\$1\$1	High scores.
A(19,54)	A copy of what's on the screen.



EOR—A way to find out who's telling the Exclusive truth



MIKE BIBBY continues his series on binary numbers

IN the last article we looked at the AND and OR operations on binary numbers — logical operations, as they are known. These were simple rules for combining numbers bit by bit. We shall continue our exploration this month with a look at the EOR operation.

EOR stands for Exclusive OR — sometimes people call it XOR. Either way it's the same thing. EOR is a variant on the way we normally use the term OR.

For example, if I say:

Mike OR Pete wears glasses

this is true if Mike wears glasses, OR Pete wears glasses, OR both Mike and Pete wear glasses.

Now it's this last case of OR we're interested in, where they both wear glasses. EOR works just like OR up to this point. However, EOR does not

"allow" both of them to wear glasses. Either one does, or the other, but not both.

To put it another way, the one who wears the glasses does so exclusively.

If both are wearing glasses then write:

Mike OR Pete wears glasses
would be true.

Mike EOR Pete wears glasses
would be a downright lie!

We could signify that a statement is true with the letter T, and use F for false. At school our teachers used ticks for truth and crosses for false. Since we're using computers, though, we'll use numbers: 1 will denote true and 0 will denote false. We've chosen 1 and 0 because they fit in so well with the binary system.

So, in the above example, if Mike has glasses we can give Mike the value 1. If Pete hasn't glasses we can

give Pete the value 0. Table 1 shows the idea, applied to each combination of spectacle user. The ones and zeros are known as truth values, states or conditions.

As you can see, there are four possible cases as far as Mike and Pete wearing glasses are concerned: neither can wear them as in case 1, where both Mike and Pete has 0 value.

Then again, Pete may wear them (1) whereas Mike does not (0), case 2, and so on.

If you look carefully at the numbers involved in all four cases, you see that we've got four pairs of bits we can combine. Each pair of bits is made up of the "truth bit" for Mike and the "truth bit" for Pete.

What I've done in Table 2 is to combine these pairs for all four cases in accordance with our OR rules. We've stored the result in a third

	Wears glasses		
	Mike	Pete	
Case 1	0	0	neither wears glasses
Case 2	0	1	Pete wears glasses
Case 3	1	0	Mike wears glasses
Case 4	1	1	both wear glasses

Table 1

Mike wears glasses	Pete wears glasses	Mike OR Pete wears glasses
0	0	0
0	1	1
1	0	1
1	1	1

Table 2

Mike wears glasses	Pete wears glasses	Mike AND Pete wears glasses
0	0	0
0	1	0
1	0	0
1	1	1

Table IV

columns.

We call such a table a Truth Table. In this case, it's the truth table for OR. We can use it to work out the result for any OR combination of two bits. All we have to do is to find the row that starts with the two bit values we're combining and then look in the third column for the result.

Table II shows a similar table for Mike AND Pete wear glasses.

Again the first two columns are identical, covering all four possible cases. The third column combines them according to the AND rules.

Look again at Table II. This corresponds in a sense to our binary rule for OR; you get a 1 if either or both bits you combine contain a 1.

However if when talking about Mike and Pete you mean OR in the exclusive sense, XOR, then the combination of Mike wearing glasses and Pete also wearing glasses would have to be false. This is because XOR means either one or the other wears glasses, but not both – it's exclusively one or the other.

If we do mean XOR in this exclusive sense we'd write our statement about them as:

Mike XOR Pete wears glasses

Its Truth table is given in Table IV:

Mike wears glasses	Pete wears glasses	Mike XOR Pete wears glasses
0	0	0
0	1	1
1	0	1
1	1	0

Table IV

If you look at each case, you'll see that the only time Mike XOR Pete is true is when either one or the other wears glasses, but not both or neither.

More formally, if both bits are 0, or both bits are 1 the result is 0. If either is 1 and the other is 0 the result is 1.

To put it another way, if the bits are identical the result is 0, otherwise the result is 1.

Let's have a look at how we XOR binary pairs of numbers. It's the same as for OR and AND – just apply the rules for XORing to each pair of bits in succession. For example:

```

1010110
XOR 1110010
-----
1100100

```

Take a look at what happens when you XOR a number with zero:

```

1010110
XOR 0000000
-----
1010110

```

that is, when you XOR a number with zero it leaves that number unchanged. Also something interesting happens when you XOR a number with itself:

```

1010110
XOR 1010110
-----
0000000

```

Whenever you XOR a number with itself, the result is zero. This is as it should be; remember, when you XOR two identical bits the result is zero.

Now XOR has a property which makes it quite useful – let's look what happens when we take a number, XOR it with a second number and then go on to XOR the result once more with that second number.

```

First number  0101101
Second number XOR 0110100
Result        1011001
Second number XOR 0110100
Final result  0101101

```

As you can see, the first number has magically re-appeared! This always happens when you XOR twice with the same number as, in a sense, the two XORings cancel each other out.

Table V summarises the process

First bit	Second bit	Result 1st XOR	Second bit again	Result 2nd XOR
0	0	0	0	0
0	1	1	1	0
1	0	1	0	1
1	1	0	1	1

Table V

for all four possible pairs of one-bit numbers. As you can see, for all the cases the final resulting bit (when the first bit has been XORed twice with the second) is identical to the first bit.

Another way to think of it is that we are doing:

```

first number XOR second number XOR second number

```

Taking the underlined part first, we've already seen that any number XORed with itself gives a zero result. So what we're really doing is:

```

first number XOR 0

```

which, as we've also seen, must leave just the first number, since XORing with zero leaves a number unchanged.

All this may seem rather abstract, but actually it's quite useful. In fact we tend to use AND, OR and XOR quite often in graphics, particularly in animation.

To simulate movement we frequently print something on the screen, then after leaving it there for a while to register on the eye, we blank it out and print it in a new position and so on.

Sometimes we blank the character out by printing it again in the same place but in the background colour.

We can, however, use XOR. If we use XOR to place our character on the screen – never mind exactly how for the moment – when it comes to wanting rid of it, we can just repeat ourselves.

That is, we just XOR the character on again. As we've seen, the effect of two XORs is to cancel each other out. In this case, they cancel out to the original background – and the character disappears.

The point is, logical operators, as AND, OR and XOR are known, can be invaluable to both the Basic and machine code programmer.

Next month we'll take a brief look at the idea of masks.

A money-saving special offer from

**ATARI
USER**

THIS
is your
passport
into the
exciting world of telecomputing!



Price includes VAT, post & packing

ITS by far the fastest growing field in micro-computing. All over the world micros are talking to each other over the telephone line. As well as to the ever-increasing number of public and private databases, bulletin boards – and even giant mainframe computers.

We want all Atari User readers to share in the new technology that makes all this possible. So we're offering a unique starter pack at an unbeatable price. It gives you everything you need to get in touch with the big wide world outside:

- Modem
- Software
- Serial Interface

The modem is the amazing Miracle Technology WS2000. One of the most powerful on the market, it provides all the facilities you require. Yet it's simplicity itself to use. Just plug it into a standard British Telecom jack and you're away!

The package also features the superb Datari serial interface, which links the modem directly to the Atari's peripheral port without the need for the 850 serial interface.

The best hardware deserves the best

software to drive it, and with the specially written Multi-Vistatim program the package is complete. It supports all the standard baud rates – 1200/75, 75/1200, 1200/1200 and 300/300 full duplex.

Your Atari User package will allow you to talk directly to other computers, to send your own telex messages, to go tele-shopping – even to download free software programs directly into your Atari.

You will be able to join Miconet/Prestel, which will immediately open up to you a vast menu of 750,000 pages of information – instant world news, sports, holidays, hotels, train and airline timetables, all regularly updated.

And you can become one of a growing number of enthusiasts who are joining MicroLink, the giant database set up in conjunction with Telecom Gold, which is described more fully in this issue.

But first, send for the Miracle package – and enter the fascinating, limitless world of communications!

Use the order form on Page 61

MicroLink

Your personal passport to the world of communications with

TELECOM GOLD

Telecom Gold's equivalent of British Telecom's Gold

What it offers the Atari user...

Give your micro mainframe power

With MicroLink you can store thousands of letters linked directly to the Telecom Gold mainframe computer and able to tap in from anywhere, now and readily. Right away you'll be able to use just number-crunching programs that can only run on a mainframe. You can set up your own computerised filing systems, store and update statistics and other information, cross-reference material between files, selectively extract the information you want, perform massive calculations and design reports to display information from any of the files and in any format you choose.

The biggest bulletin board of them all

The number of bulletin boards is growing rapidly. Now ones are springing up in all parts of Britain and all over the world, with people of like minds chatting to each other on all manner of subjects. The only snag is that the vast majority are single user boards - which means lots of other people are also trying to make contact and all too often all you get is the engaged tone. But with the MicroLink bulletin board there is no limit to the number of people using it at the same time. And no limit to the number of categories that can be displayed on the board.

We're only a local phone call away

More than 96 per cent of MicroLink subscribers can connect to our mainframe computer in London by making a local phone call. This is possible because they use British Telecom's P10 system, which has access points all over Britain. A local phone call is all you need, too, for access to the international Telecom system through MicroLink.

Telemessages - at a third of the cost

The modern equivalent of the telegram is the telemessage. Send it before 11pm and delivery is guaranteed by first post the following day (except Sundays). The service was invented for people phoning their message to the operator, and it costs £1.50 for 50 words. But you can now use it via MicroLink for only £1.25 for up to 750 words!

Send and receive telex messages

With MicroLink you can turn your micro into a telex machine, and can send and receive telex messages of any length. You will be able to

communicate directly to 95,000 telex subscribers in the UK, 11 million worldwide - and even with ships at sea via the telex satellite network. Business people can now send and receive telexes after office hours, from home or when travelling. You can tap in a telex during the day and instruct MicroLink not to transmit it until after 5pm - and save 10 per cent off the cost!

The mailbox that is always open

MicroLink is open 24 hours a day, every day. That means you can access your mailbox whenever you want, and from wherever you are - ... home, office, airport - even a hotel bedroom or golf club! No-one needs to know where you are when you send your message.

What does it all cost?

Considering all the services you have on one, MicroLink is remarkably inexpensive. You pay a once-only registration fee of £5, and then a standing charge of just £3 a month. On the next day are 30 minutes (between 9pm and 5am) and 10.5p a minute during office hours. There is an additional 2p a minute P10 charge if you are calling from outside the UK. London call areas. Charges for telex, telex messages and storage of files are given on the next page.

How much it costs to use MicroLink

Initial registration fee: £5.

Standing charge: £3 per calendar month or part.

Connect charge: 1.5p per minute or part - telephone, 30.0p per minute or part - standard rate.

Applicable for duration of connection to the Service (minimum charge: 1 minute).

Charge on a free line (free from Monday to Friday, all day Saturday and Sunday and public holidays) depends on a free line to Open Monday to Friday (excluding public holidays).

Filing charge: 20p per unit of 2,000 characters per month.

Applicable for storage of information, with a 10% short-cut and mailbox. The number of units used is an average calculated by reference to a daily average.

Information Database: Various charges. Any charges that may be applicable are shown on forms you obtain access to the database.

MicroLink FMS service: 2p per minute or part (300 baud), 2.5p per minute or part (1200/75 baud).

Only applies to users outside the ECU London currency.

Telex registration: £10.

Outgoing telex: 5.5p per 100 characters (300, 11p per 100) (London), 36.5p per 1000M, American, £1.75 per 400 (Rest of world), £2.75 per 800 (50p up rate).

Delivered messages sent on the night service are subject to a 20 per cent discount.

Incoming telex: 50p for each correctly addressed telex delivered to your mailbox. Obtaining a mailbox reference from the sender incurs a further charge of 50p.

It is not possible to deliver a telex without a mailbox reference. If a telex is returned without a mailbox reference the sender will be advised of non-delivery and asked to provide a mailbox address.

Each user continues for nine months (expiry date) at a charge of 4 storage units a month. Further storage charges could be incurred depending on the amount of telex storage and the use made of short code and message file facilities.

Telemessages: £1.20 for up to 200 words.

Redipaging: No charge.

If you have a RT RediPager you can be paged automatically whenever a message is waiting in your mailbox.

International Mail: For the first 1,000 characters - 20p in Germany and Denmark, 30p to USA, Australia, Canada, Singapore, Hong Kong and Israel. For additional 1,000 characters - 15p 30p.

These charges relate to the transmission of information by the Telexnet service to other Telexnet services outside the UK and the Isle of Man. Multitext requires additional service system fees from your own transmission charge.

Billing and Payments: All charges quoted are exclusive of VAT. Currently, VAT is not included monthly.

Software over the telephone

MicroLink is setting up a central store of software programs which you'll be able to download directly into your micro. The range will include games, utilities, educational and business programs, and will cover all the most popular makes of micros.

Talk to the world - by satellite

MicroLink is part of the international Telexnet network. In the USA, Australia and a growing number of other countries there are many thousands of users with electronic mailboxes just like yours. You can contact them just as easily as you do users in Britain - the only difference is that the messages from your keyboard go speeding around the world via satellite.

What you need to access MicroLink

You must have three things in order to use MicroLink: a computer (it can be any make of micro, hand-held device or even an electronic typewriter provided it has communications facilities), a modem (it can be a simple Positel type using 300/75 baud, or a more sophisticated one operating at 300/300 or 1200/75 baud), and appropriate communications software.

MicroLink

In association with

TELECOM GOLD

Application Form

This form only applies to your MicroLink.

- I receive my charge for £6 payable to Database Publications in registration fee to MicroLink.
- I also wish to use Telex. I authorize you to charge an additional £10 to my initial bill for validation.
- I confirm that I am over 18 years of age.

Signature _____

Date _____

I intend to use the following computer

FOR OFFICE USE ONLY:

Mailbox number _____
Start date _____
Password _____

SEND TO:
MicroLink
Database Publications
Empire House
44 Chester Road
Hazel Grove
Stockport SK7 5DY.

Name
Position
Company
Address
Postcode Telephone

Consentment of transfer

Please indicate month of consentment
Allow 10 days for validation of transfer

1

Payment

While Database Publications Ltd is the supplier of the services to you, the commission and billing thereof will be handled by Telecom Gold as agent for Database Publications Ltd. Date of last payment to be on 15th of month following commissionment. Please complete billing authorization form A, B or C below.

A. Direct Debiting Mandate (Direct Debit) (postal address of Bank Branch)

To

I/We authorize you will further notice in writing to charge to my/our account with you on or immediately after 15th day of each month specified amounts which may be debited through the instance of British Telecommunications plc - TELECOM GOLD by Direct Debit Bill on receipt 15 days before date is given above.

Name of Account to be debited
Account Number

B. Please debit my/our Account/Your account number

I/We authorize you will further notice in writing to charge to my/our account with you on or immediately after 15th day of each month specified amounts which may be debited through the instance of British Telecommunications plc - TELECOM GOLD 15 days before charge is applied to your account.

C. Please invoice the company/utility.

If you select this option, which is ONLY AVAILABLE to government establishments and public limited companies, you will be sent an authorization form for completion which will require an official order number to accept approved amounts.

* Telecom Gold is a trademark of British Telecommunications plc.

Mega Deals

Compumart
ATARI HARDWARE

Atari 800XL Computer & Atari 1050 Disk Drive
(inc. Home File Manager & Pay off Adventure & Atan Derric)

£234⁹⁵
- p&p

Atari 800XL Computer

£84⁹⁵
- p&p

Atari 1050 Disk Drive

£169⁹⁵
- p&p

•NEW• Atari 130XE Computer

£159⁹⁵
- p&p

•NEW• Atari 130XE Computer & Atari 1050 Disk
Drive (with 10 Blank Disks FREE)

£299⁹⁵
- p&p

BLANK DISKS

Top Quality 5.25" Single Sided/Double Density Blank Disks
Buying in bulk has enabled us to supply these disks at the

Best Prices in the U.K.

With a LIFETIME WARRANTY

Box of 10 5.25" SS/DD Blank Disks including labels and write protect tabs

ONLY £9⁹⁵
- p&p

Buy 3 Boxes and get a **FREE** Storage Case worth over £10!!!

50 5.25" SS/DD Blank Disks in a **FREE** Perspex Storage Case

ONLY £49⁹⁵
- p&p

Goods despatched same day . . . Disks 1st class post, Hardware - parcel post
Postage & Packing . . . Add £1.00 per box of disks, £2.00 per box of 50 and £3.00 per item of hardware
Please send cheques/postal orders to:-

Compumart, (Dept. A4) |
71 Graceland Road, Loughborough,
Leics. LE11 0GF Tel: (0530) 248859

1029



By MICHAEL KING

screen information, standard 8 bit horizontal bytes, to the 7 bit vertical bytes understood by the 1029. That's a lot of bit manipulation if you want to print out a whole screen.

Well, for all of you who have been out and gassed with your well-earned cash for the 1029, look no further. Type in Program I and save it to disc before putting it to use.

This is only a subroutine, and must be used together with your own program to set up your own picture screen.

If you would like an example, type in Program II, which will set up a graphics 8 screen with a basic design scribbled all over it — see Figure 1.

Just set the variable OFFSET to a value between 0 and 160. This is the offset of the picture on the paper left to right.

If you wish your masterpiece to occupy the left edge of the paper, then set OFFSET to 0, or to occupy the right side of the paper set it to 160. But for a centered picture, rather nice, OFFSET should be 80.

Ensure your 1029 is on and type RUN. The whole screen will be dumped to the printer.

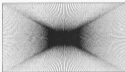


Figure 1: Portrait made by using Program I and it together.

PROGRAM STRUCTURE

- 20000** Finds the screen address, sets the variable IOCB to use the IOCB number 1 and checks to see if OFFSET is within the range 0 to 160.
- 20010** Uses a GOTO trick that gives Asci Basic an IF... THEN... ELSE command. If control will be passed to line 20020 ELSE the rest of line 20010 will be acted upon and the converter will be read into page 6.
- 20020** Start of the loop that opens the printer and prints the line headers to the printer.
- 20025** There's that ON GOTO trick again. Prints the OFFSET number of blank pixels to the paper. The USR call. Also adds 280 (7 * 40) to the variable SCREEN to give us the next printable line.
- 20030**

The rest of the program is the data for the converter.

LAST month we looked at the instruction set of the 68000 microprocessor. And, just as man cannot live by bread alone, neither can a microprocessor live by instruction alone.

What gives an instruction set its power is the addressing modes associated with it.

This is because an instruction identifies the operation to be performed – such as add and subtract – but the addressing mode explains where the operation is to be performed.

The best instruction set in the world is no good without a variety of addressing modes.

Basically the action of an instruction can be based in one of two places – either an on-chip register or an off-chip memory location.

There are two different types of on-chip registers in the 68000. These are the address registers and the data registers. Off-chip memory can be specified with a 32 bit address although only 24 bits are used in the 68000.

Registers can be thought of as temporary storage to be used while bit patterns are being manipulated, whereas off-chip memory is used for more permanent data as well as storing the program and accessing the hardware.

So why do we need different types of addressing mode? The answer is to cope with different programming problems.

The best way to understand the different modes is to look at each in turn and see how they can help us.

First, the form most assemblers use when handling address information for this processor. This consists of three basic parts –

- The instruction mnemonic and length of operation – byte, word, long word.
- The source – where the data is to be taken from.
- The destination – where the result is to be placed.

The art of programming is to tie these three things together to perform as they want without typing yourself in knots.

The manner in which the source and destination are specified is known as the addressing mode. This calculates an address which is known

as the effective address. It is this effective address that is used.

Let's take the simplest addressing mode, that of Register Direct.

This simply uses the registers to hold the data. For example, if you wanted to move the data from data register D3 to address register A5, you would use the register direct addressing mode for both source and destination.

Assemblers might differ in syntax, but typically the form would be:

MOVE.W D3,A5

which means move the word – 16 bits – FROM data register 3 TO address register 5.

In fact there are two variants of the same mode being used here. They are Data Register Direct for the data register and Address Register Direct for the address register.

The Address Register Direct addressing mode is used mainly in the

low addressing parts of a program or to operate on temporary storage areas.

Now in order to write any type of program you need to be able to cope with constants, even if only to set up the initial value of a variable.

A constant is a value that is known at the time you write the program – we say that it is "known at compile time".

So when the assembler turns all the mnemonics into the binary bit patterns of machine code instructions, the number we want to use is known.

What happens is that the assembler places these numbers alongside the instructions in the body of the program. The values to use follows immediately after the instruction.

Hence the name of Immediate Data Addressing. Its main use is to initialise counters or variables. For example, suppose we want to set up



Addressing modes of the 68000 microprocessor

In Part II of his series examining the powerful 68000 chip at the heart of the Atari ST, MIKE COOK examines its versatile addressing modes

data register D1 with the value 8 we would write:

```
MOVE.B #8,D1
```

that is, move the byte — 8 bits — into data register D1. The 8s before the number tells the assembler to treat what follows as an immediate decimal value.

In fact there are two types of immediate addressing mode — Immediate and Quick Immediate. The quick mode incorporates the value into the instruction, whereas the normal mode adds the value at the end of the instruction bytes.

Only limited number values can be used with the quick mode, but any assembler worth its salt will choose the quick mode if the numbers are within the restricted range.

Therefore you do not have to worry too much about the difference between them.

To handle a variable you must be able to access off-chip memory. Most of the time you know what address you want to use, just as in a high-level language you know what name the variable is. We say the address is known at compile time.

To do this you can use the Direct Memory Addressing mode. This takes a value and compiles it next to the instruction just like the immediate mode. The difference is that when the number is used it is taken not as a value but as the address where a value is to be found.

For example, to move the value in memory location 8 into data register D4 you would use:

```
MOVE.B 8,D4
```

where 8 indicates that what follows is the hexadecimal value of the memory address from which to take the data.

Again there are two types of this addressing mode — Absolute Short and Absolute Long. The difference lies in how many extra bytes are used to specify the address.

Basically, the short mode is used when you want to address the first or last 32k of memory — where you can get away with specifying the address in two bytes — otherwise you need the long mode which specifies the address in four bytes. Again, any semi-decent assembler should

choose the correct one for you.

In many cases the address of a variable is not known at compile time.

This may be where you want to apply the same operation to many different variables. In high-level languages you would use an array with a fixed name and a variable subscript. In machine code you would use a form of indirect memory addressing of which there are five different variants.

Indirect Memory Addressing is therefore the most complicated of the addressing modes.

The simplest of this complex bunch is the Register Indirect mode.

In this mode a register holds not the value but the address of a value. We say that the register points to a memory location, of course before this mode is used the register must be set up to point to the area you want.

For example, suppose we wanted to clear a section of memory. Then we could set up the address of the start of our section in memory in address register A0 and then perform:

```
MOVE.B #0(A1)
```

The brackets indicate not to use the register itself as the destination but what the register points to.

We can then increment the register, jump back and perform the same instruction. This time we clear the second byte of our memory.

We can add a constant on to the value in a register by using the Register Indirect with Displacement Addressing mode. This allows you to access memory locations up to 32k either side of that pointed to by the register.

This can be useful if we want to access a particular element of an array whose address is variable.

Note that the displacement can be zero, in which case the addressing mode would be in effect the same as the simple register indirect mode. To indicate this it is usual to place the displacement outside the brackets, so:

```
MOVE.B #0,16(A1)
```

which clears the byte at location 16 away from that pointed at by the address register.

Perhaps the most complex addressing mode of all is Register

Indirect with Displacement and Index.

This works like Register Indirect with Displacement but with the addition of another value. The effective address is the sum of the displacement, the contents of an address register and the contents of a data register — the index bit. When all three have been added the result defines the location to use.

As it is quite a complex mode, any example to illustrate it is going to be complex, but here is one case where I have used this mode in anger.

I had a digitised picture and I wanted to count how many pixels I had of each brightness level. So I set up an address register (A3) to point at the start of an array whose elements were the brightness levels and whose contents were the number of pixels at that level.

I then put the pixel brightness level into a data register (D3) and performed:

```
ADD.B #1,16(A3,D3)
```

This added the value 1 to the memory pointed at by the sum of A3 and D3.

The displacement was not needed and so could be zero. As there were many such arrays in my system, once A3 was pointed with the correct value the same code could be used for all arrays.

There are two more modes in this section — Post-Increment Register Indirect and Pre-Decrement Register Indirect. They are quite a mouthful but basically are variants of the simple form of indirect addressing.

One mode increments the actual register after performing the operation, and the other mode decrements the register before performing the operation.

These two modes are usually used together to form a push-down stack in memory. As any of the address registers can be used in this mode it gives us up to eight different stacks. This allows us to pass parameters to subroutines on stacks. This is just what is needed when implementing the high-level language Fort.

Basically, to push data from D0 on to a stack pointed at by A5 you

would use:

MOVE.L D0,-(A6)

To recover the data back into D3 then:

MOVE.L +(A6),D3

As you can specify bytes, word or long word operations the increment sizes are one, two and four respectively. This also allows you to process an array or string a single element at a time.

Relative addressing does not mean "Dear Auntie Rose" but is a way of specifying an address relative to the instruction in the program.

I am sure you have played Monopoly and received the card "Go back three places". Well, that is relative addressing, your destination depends upon where you are.

In most processors this is reserved for program branching, but in the 68000 it can be used with many

different instructions.

The purpose of this is to enable you to write code that is position independent. That means that the code can run when placed anywhere in memory. This is necessary in overlay systems where memory to run programs is dynamically allocated for a memory allocation program.

Code can be moved in from disc to an area of memory when needed. It can then stay in the memory after use unless some other program needs more space in which case it is purged (removed).

As the free memory - known as a heap - is always changing it is essential that programs must be position independent.

There are two types of relative addressing - one that specifies a displacement and one which uses an index value as well as a displacement.

Normally you will access these through labels in your assembler

program and the assembler will look after calculating the displacements at compile time.

The final addressing mode is the simplest one - Implied Register Addressing. The register to use is specified in the instruction. This is a catch-all mode for those instructions that alter the status register, program counter or stack pointer.

The register to use is part of the instruction itself, so will not trouble you further.

Mastering the addressing modes is 80 per cent of being a good machine code programmer and sound knowledge of what each one does is essential. As you can see, the 68000 provides a comprehensive collection of addressing modes which can be used as both source and destination in many instructions.

■ Next time we will look at the overall environment the 68000 presents to the programmer.

TWO WAYS TO ENSURE YOU GET

ATARI USER

EVERY MONTH

1. Complete and mail subscription form on Page 81.
2. Hand this form to your newspaper.

Please reserve two copies of Atari User magazine every month until further notice.

- I will collect
 I would like it delivered to my home.

Name _____
 Address _____

Write to newspaper; Atari User should be obtainable from your local retailer, or contact Steve Alton, Circulation Manager on 0183 27665.

STOCKSOFT

DISK 15

Master made game of 17,000 lines of assembly in the disk in file with some 100,000 lines of code.

DISK 20

200,000 lines of assembly code with 100,000 lines of code. This is a very large program, written in assembly, and is a very good example of what can be done with the 68000.

DISK 25

Master made game of 17,000 lines of assembly in the disk in file with some 100,000 lines of code.

DISK 30

Master made game of 17,000 lines of assembly in the disk in file with some 100,000 lines of code.

DISK 35

Master made game of 17,000 lines of assembly in the disk in file with some 100,000 lines of code.

DISK 40

Master made game of 17,000 lines of assembly in the disk in file with some 100,000 lines of code.

DISK 45

Master made game of 17,000 lines of assembly in the disk in file with some 100,000 lines of code.

DISK 50

Master made game of 17,000 lines of assembly in the disk in file with some 100,000 lines of code.

DISK 55

Master made game of 17,000 lines of assembly in the disk in file with some 100,000 lines of code.

DISK 60

Master made game of 17,000 lines of assembly in the disk in file with some 100,000 lines of code.

DISK 65

Master made game of 17,000 lines of assembly in the disk in file with some 100,000 lines of code.

DISK 70

Master made game of 17,000 lines of assembly in the disk in file with some 100,000 lines of code.

DISK 75

Master made game of 17,000 lines of assembly in the disk in file with some 100,000 lines of code.

DISK 80

Master made game of 17,000 lines of assembly in the disk in file with some 100,000 lines of code.

DISK 85

Master made game of 17,000 lines of assembly in the disk in file with some 100,000 lines of code.

DISK 90

Master made game of 17,000 lines of assembly in the disk in file with some 100,000 lines of code.

BULLOCK SOFTWARE

FROM SOFTWARE ENGINEERING GROUP



Our latest titles in stock
"LANDS OF MAYOC", ST available soon
 contact 0183 640 0800 (evening)

Phone 021-783 3888

Send for lists of competitive prices

Put by Group/Vis/PV's

384 Westwood Heath Road, Ward End,
 Birmingham B8 2NB

LOGO IS AN EXTENSIBLE LANGUAGE

says DEREK RADBURN

WORDS and lists are what makes Logo tick. They may not be as well known as turtle graphics, but it is worth remembering that turtle graphics was developed in a word and list environment.

In Atari Logo almost all aspects of list processing are present, the exceptions being TEXT and DEFINE. The purpose of this article is to show something of what is possible in Logo, using words and lists.

To begin with, Logo is an extensible language. You can make the system larger and more powerful. I will illustrate what I mean by looking at its conditional test.

Logo's test is one found in many programming languages, the IF condition. If true THEN do this and, optionally, ELSE do this. Let's illustrate this:

```
TO ENTER
TYPE (What shape do you want? (R or
T)) MAKE "KEY KC
IF NOT (R = KEY + "R OR T = KEY)
[You must respond with R or T]
WAIT 50 ENTER!
END
```

All that this very trivial procedure does is to ask for some input, create a variable called KEY to hold the response, and then test the value of that variable to ensure that it's what is asked for.

There are several things to note about this. First, in this example the THEN branch is a list and the optional ELSE list is not present.

Second, input is handled by RC, ReadCharacter, which always outputs a single character word. Notice also the use of TYPE instead of PRINT — can you work out why?

Third, by using OR it is possible for

IF to check two conditions and output true if either is found.

It is possible for OR to take more than two inputs. To do this, OR has to be preceded by a parenthesis, (, and the list of conditions terminated by a closing parenthesis,).

When a Logo primitive, which normally takes two inputs, is used in this way with more than two inputs, it's known as a "greedy procedure".

These might make writing procedures easier, but they have their price when things go wrong — error messages tend to be misleading.

Now one thing which is useful to have is a conditional test which allows an action to be carried out once before a test is invoked. The structure for this is DO action UNTIL condition. It is quite easy to write such a test in Logo.

```
TO DO :ACTION :CONDITION
RUN :ACTION
IF RUN :CONDITION GOTOPI
DO :ACTION :CONDITION
END
```

DO takes two lists as its inputs. Let's put it to use:

```
TO SPINNA
DO (GO RT 27)
END
```

```
TO GO
REPEAT 4 (RT 90 RT 90)
END
```

```
TO HURRY
TYPE (Again?) ] MAKE "KEY KC
IF NOT (KEY = "Y (SP "TRUE) (SP
"FALSE)
END
```

Notice here the use of the

backslash. This stops the Logo interpreter from processing the character following it.

Another point to note is the use of NOT in the IF test.

Finally, OP is short for OutPut which causes the procedure to terminate, sending back the item following OutPut to the calling procedure or command level — toplevel.

The DO procedure is an example of tail recursion. Recursion is a process which often gives problems in getting to grips with understanding it. Essentially, recursion exists in ordinary everyday life.

Think about walking:

```
TO WALK
MOVE OPPOSITE FOOT IN FRONT OF OTHER
WALK
END
```

I do not suggest you type this into your Atari, but it does, I suggest, put a Logo type of form to an everyday recursive activity.

As you have probably noticed, the particular quality of a recursive procedure is that it has, as part of its definition, a call to itself.

This is not the same as a REPEAT loop. Recursion produces many images and uses a lot of memory. The REPEAT loop does not.

Often, in explanations of Logo, recursion is used to do trivial things in turtle graphics where the use of the REPEAT loop would be far more appropriate and economical.

Here is an example of recursion being used to manipulate a word or

list, together with some new Logo commands:

```
TO REV :OBJECT
  IF EMPTY :OBJECT [IF WORD? :OBJECT
    [OP * 3 OP 123]]
  IF WORD? :OBJECT [OP WORD LIST
    :OBJECT REV N :OBJECT]
  IF LIST? :OBJECT [OP LPUT REV FIRST
    :OBJECT REV OF :OBJECT]
END
```

If you're not clear what this procedure does try typing `PR REV 3` `LOVE` `ATARI` `LOGO!`.

Let's try to analyze and explain what's happening. First, notice `REV`'s needs to be given two things. The first is something which can use any output which arises from `REV`, the second is an input for `REV` to operate upon.

The first line of `REV`, as distinct from its title line, checks to see whether the input `:OBJECT` is empty. If it is, it causes either an empty word or list to be output, which terminates that call to the procedure.

The second line tests to see if the input to `REV` is a word. If it is, it builds a new word by taking the last letter of the input and joins it to the results which come from using `REV` with the `ButLast` — everything but the last letter — of the input.

The third line tests to see if the input is a list. In this event the first item of the list is subjected to another call to `REV` and then a new list is built up by placing the results at the end using `LPUT` — `LastPut` — and then using `REV` on the `BF` — `ButFirst` — of the original input. This application of recursion is known as *total recursion*.

If this example seems rather complex it is because it is a very generalised procedure capable of handling both words and lists, without the user needing to distinguish them.

It's important here to note that the Logo system sees words and lists as being very different. Try this example:

```
PR 'NAME
```

and this:

```
PR [NAME]
```

What you should see is no apparent difference.

But now, try this:

```
IF 'NAME = [NAME] [PR
  'SAME] [PR 'DIFFERENT]
```

Now you know!

It's important to know where each

‘The Logo system sees words and lists as being very different’

data type may be used. `WORD` joins only words together to form one word, `SE`, or `SENTENCE`, joins either words or lists. If it's word to word, or word and list, or list to list, the result output is one list.

With either `FFUT`, `FindPut`, or `LPUT` there are also two inputs. The first can be a word or a list, but the second must be a list.

The resultant output is either, in the case of word to list, a list with an embedded list and a word, or in the case of list to list, a list with two lists embedded in it.

I want to finish by showing how Logo and lists can be used for numeric manipulation. The three procedures which follow will generate all of the prime numbers up to a chosen level. Try using `PR PRIME 50`. You should get your results very quickly.

```
TO PRIME N
  IF EMPTY :PRIMELIST [OP 'TRUE]
  IF EQUAL? N REMINDER N FIRST
    :PRIMELIST [OP 'FALSE]
  OP PRIME N OF :PRIMELIST
END
```

The function of this procedure is to take a number and check whether it is a multiple of any of the prime factors provided in the second input.

If there is no remainder after division then the number is not prime and `'FALSE` is output.

By recursion, the procedure runs down the list of factors until, if the list is empty, then the number must be prime and `'TRUE` is output.

```
TO SIEVE N L
  IF N < 1 [OP L]
  IF AND PRIME? N = 1 [L PRIME N +
  1 L] [OP LPUT N + 1 LPUT N = 2
  SIEVE N - 6 L]
  IF OR PRIME? N + 1 [L PRIME N -
  1 L] [OP PRIME N + 1 L] [OP LPUT
  N + 1 SIEVE N - 6 L] [OP LPUT
  N - 1 SIEVE N - 6 L]
  OP SIEVE N - 6 L
END
```

It will be necessary to type this in

the editor, by typing `ED 'SIEVE`, since there is not the limit on individual line length there which exists at top level.

This is the procedure where the "business" is done. The algorithm being used here makes use of the fact that, apart from 2 and 3, all primes are adjacent to multiples of 6, hence the progressive subtraction of 6, and the examination of numbers one more or one less than 3N.

There are three conditions which the procedure has to handle. The first is where both adjacent numbers are prime, this is dealt with in the second line, the second is where only one adjacent number is prime — line three — and finally where neither is prime — line four.

At the end of each of these lines there is a recursive call to `SIEVE` with `N` decremented by 6.

```
TO PRIME N
  IF SIEVE :OBJECT (N - 6) [OP N + 6 + 6]
  SIEVE :OBJECT (N - 6) [OP N + 6 + 6]
  OP ]
END
```

The function of this procedure is to present `SIEVE` with suitably prepared inputs — notice one of those is actually a call to `SIEVE` itself.

The first input is a complex expression which, when evaluated, gives `SIEVE` the next multiple of 6 above the initial input of `PRIME`.

The second input is the output which results from a call to `SIEVE`, which produces the list of prime factors, this only call has 2 and 3 as its initial prime factors.

Again Logo does not have a `DIACRT` operator, so you will have to write it:

```
TO DIACRT N C
  IF (N OF C) [OP ]
END
```

Try this out, and see what the largest number is that it can handle before the system runs out of memory.

Try out some procedures of your own. I would be interested in hearing about what you produce.

I FEEL I must write to explain to beginners who are finding difficulty getting programs to run which they have typed in from magazines.

When I started typing in programs from magazines three years ago I encountered exactly the same problems.

I would check the typing and my typing classes at times and not find any errors, so I would write off to the magazine concerned.

I would receive a reply saying that I had made a mistake. So I would check my listing again and again and sometimes after hours I would get a silly typing error, say a letter Q, which should have been a zero.

All I can say is check your typing very very carefully and I can guarantee you will find the error eventually. I still make typing errors even now.

I can't understand why Mr. S. Smith from New York and the Atari's character methods I and thousands of other Atari owners find Type II is contained in pin pointing typing errors. — **Paul Corbett, Dunsmuir-on-Trent.**

■ We're thinking of reprinting this letter every month till you are one of the many people who have written with problems in getting the listed programs to run, believe us Paul is right.

When we find genuine bugs in the programs we'll print corrections.

Wanted — a full list

I WOULD like to say thank you for a fine first issue of Atari User and to say that you have now filled a void in the shelves of my local magazines.

In spite of owning a number of books on the Atari micros, I have not been able to find a full list of error messages, and even with some of the ones that I do have I have been unable to decipher the characters in which they are written.

I would suggest that if you could reedit this shortcoming in future issues of Atari User you would earn the gratitude

The golden road to successful listings

of many of your readers. — **T.J. Hurley, Liverpool**

■ Some of the error messages are quite inscrutable, aren't they? Our favourite is DIRTCE BAK. You'll bear my suggestion in mind.

Clean out of REMs

WHEN I bought the July issue of Atari User I typed Bomb Run in my IBMPC, and at the end I typed REM.

Every time I pressed the Return button the computer kept putting up "Error T2 at line 50".

I know that the T2 means that I cannot find line 50.

It did it on the Submarine game and this time it said "Error T2 at line 50". I have checked these two games over and over again.

Could you please tell me how I can make these games run. — **Paul Lynch, Birmingham.**

■ Both line 50 of Bomb Run and line 50 of Submarine QUOTE is a REM statement.

We suspect you've entered

these games without bothering to type in the REM statements.

With many listings this would be fine, but in both these cases the program authors have chosen to jump to a REM.

Typing in the missing line numbers with just the word REM on them should cure your problems without too much extra typing.

Odd dice

WHEN I was reading the June edition of Atari User I noticed that in Random Thoughts on Page 54 the two dice are wrongly printed.

On all dice opposite sides add up to 7. From the numbers visible on both dice this rule does not apply. — **Philip Smith, Walsall.**

■ At least it shows that gambling isn't one of our vices.

Poor service

HOW pleased I am to see that we have now got a great magazine, Atari User. I was feeling sorry that I had

changed my computer to the Atari until I got your first edition.

What had got me fed up was the ignorance of Atari UK in Slough.

In January of this year I sent a tape of a program that I was having trouble with and so-one had the decency to reply or send my tape back.

After trying loads of times to contact Melville by telephone — it was always engaged — I did manage to speak to someone who promised I would be written to in two weeks.

I don't know what criteria they meant the two weeks to be in, because I was never heard nothing.

Ten weeks ago I got in touch with customer relations at Slough, who told me they sent another copy of the program they would give it urgent attention.

But then again — silence. In my opinion, if Jack Pauson wants to sell his computer in the UK he should come and sell things out at

Illumination on luminance

```

30 PRINT CHR$(205)
30 FOR N=0 TO 255:FOR M=0 TO 255:IF
30 IF N<16 THEN SETCOLOR 1,14,0
40 IF M<16 THEN SETCOLOR 1,0,0
50 POSITION 11,12:PRINT M,N
60 POSITION 11,12:PRINT "COLUMN LINE
NEXT"
70 SETCOLOR 3,0,0:FOR C=0 TO 255:PRINT
CURRENT COLUMN:PRINT C
80 GRAPHICS 0:POSITION 10,12:PRINT ""
80 GOTO 30
  
```

I FOR MY owners an Atari 800XL for two months and have just seen your series on graphic modes (Issue 1).

Being a beginner I typed in listing 3 and found it only showed one luminance, so I set down and worked out a listing for each colour and luminance. I think it will come in handy for other Atari beginners.

To please our Control's I. — **C.M. Hampson, Nottingham.**

Atari UK. It's no wonder Hignett had to go down with the terrible Atari virus.

I don't suppose I am the only one who has suffered these difficulties with Atari. If there are others, I would like to hear from them - and I will send their complaints along with my own, to Atari in America who are personal friends of Jack Tramiel - G. Whitaker, Swinton, Manchester.

Room for improvement

I WOULD like to congratulate you on producing such a good magazine and wish you good luck for the future.

But I feel that the magazine could be improved in several ways. Although it is well presented, I feel the subjects are aimed too much at novice and beginning computerists rather than the veteran Atari programmers.

Do please could you try to broaden your horizons and show us what the Atari really is capable of.

Topics you could cover are: searching, display file interrupts, vertical blank interrupts, assembly language routines and complete graphic techniques.

Also, how about some photographs in your software review section.

Other also that I feel that your magazine is excellent value and is just what our kind of owners need - I mean, who wants to pay three quid for an American Atari magazine? - Steven Harris, Norwich, Lincs.

Why am I locked out?

WHEN I use my Atari 800XL, it sometimes locks up.

It just stops - you can't type anything at all. Even if you press Reset it will not clear the screen.

The only thing you can do is to switch off the computer -

ATARI USER Mailbag

WE welcome letters from readers - about your experiences using the Atari micros, about how you would like to pass on to other users... and about what you would like to see in future issues.

The address to write to is:

Mailbag Editor
Atari User
Europe House
66 Chester Road
Maxwell Grove
Stockport SK7 5WY

and this can make me quite mad, because I love the program on the computer.

Could you please explain why this happens?

Generally, could you tell me what the Help button is? It does not seem to do anything. - P. Cartledge, Church Lawton, Stoke-on-Trent.

■ If your machine 'locks up', you should take it back to your dealer and explain the problem.

For information on the Help key, see our July issue, Page 57.

Not for homework

COULD you tell me if it is possible to record sounds produced by my computer in the audio channel on my AT50 cassette recorder, and then to use these sounds while loading programs?

This was attempted by Alexander Gemley in her review of 'Zemwell' by Level 3 in Issue No. 1. - David S. Barker, Derby.

■ No, it's not possible to record sounds from your programs into your recorder.

Elizabeth was referring to programs like Atari's conversational language series which have an audio track alongside the program track on the tape.

This audio track is just an using specialised recording equipment - not the sort of thing you could do at home.

Check-sum a good idea

I HAD just received both my May and June issues of Atari User and found them very interesting, I particularly liked the 12 page feature on computer communications, and wish I could afford a modem because it looks great fun.

I think a check-sum program is a good idea, I was going to write and suggest the idea myself but I got beaten to it.

They save a lot of time and frustration and warnings are often put off as I was if a program doesn't work after hours of typing.

Please get one soon, I have a couple of suggestions. My first is that your programs be made available on cassette as well as disc.

I think this is a great idea having all the programs on a disc, but as not many of us can afford disc drives I think a cassette would please many people.

In future issues I would like to see a private ad page for readers to advertise their computer equipment and games.

I have seen this sort of thing in other magazines and I think it is a great idea. Apart from these two suggestions I think your magazine is great. - Luke Hellingburgs, Kirby Muxton, Leicestershire.

Making it childproof

AFTER typing in the Alphabet Train I found a problem. If the user has not got a joystick, the Break key can easily be pressed by a very enthusiastic child, thus ending the program.

If you insert the following lines they will stop this from happening:

```
Lines 150 & 915, POKE  
16,99: POKE 5374,64
```

As the program takes up nearly all of the 1k, it will be necessary to delete some of the ROM statements if the user has not got a joystick over 10k. - Kelvin S. Coffey, Rayleigh, Essex.

Monitor questions

CAN you plug in a monochrome monitor and use it at the same time as a TV display - the monitor for text and the TV for graphics?

Which monochrome monitors can be used with the Atari 800XL, and which have standard connecting cables - if any?

Do 80-column monitors show 40 character lines?

Is there any way of making the 800XL show an 80 character line on a suitable monitor by using Feed and Poke, or a machine-code routine? - J. Smart, Hitchin, Herts.

■ Yes, you can connect a monitor and a TV at the same time, but you will get the same picture on both - one in colour, one in black-and-white.

Any monitor with a composite input connection - that is, almost any monochrome monitor - will work. Cables will probably be wired up as extras, or contact an Atari dealer for a ready-made cable - stating the make of monitor you have decided on.

The picture is generated by the computer, and the monitor just displays it. Hence, any monitor, whatever the number of characters it can display,

will only show you 40 characters per line if that is all you need to do it.

There have been programs which put 80 columns on to a Graphics II screen - but they are very tricky and complex, and it's machine code. Try your local user group to see if they have one, or perhaps someone would care to write in with one?

COULD you please recommend a good colour transfer with sound output for the Atari 800X? I can afford to pay around £200. - **Paul Jenkins, Belfast.**

As above, any monitor with a composite video input will do. Ferguson do a nice one, as do a number of other companies. We recommend, strongly enough, the Commodore monitor designed for CBM-84, at between £200 and £230.

Software suits

I AM very pleased with your magazine, especially Mailbag and the lengthy software reports. Keep it up.

In the July edition you gave a report on the new DOS 2.5. You said that it would be free, and to ring the Atari Helpline during office hours to find my nearest user group or retailer either email or write to us just DOS 2.5 onto one of my own blank discs.

I rang the Helpline to find out where my nearest user group/retailer was. They told me that I might have to pay 50p or more but no more than a pound to have it transferred on to one of my own discs.

I was satisfied with this and they told me that my nearest retailer was in Leicester.

I went there with my blank disc, but they told me that no way would they put a copy of DOS 2.5 onto my disc for me. They told me it would be around £3 and that they didn't have it in stock. They said that they were expecting it in at any moment.

I have been in again and they are selling it at £2.25 on Mainline also with a label

The answer to inverse video

THANK you for Britain's most readable "Atari only" magazine.

I bought the first issue out of curiosity, and shortly afterwards found myself buying the second - it must be good.

I'm glad to see you are trying to catch the interest of the younger Atari users - something which hasn't been the custom in the past.

The varied editorials are most interesting, but how about some short demo programs in assembly to allow

doctors like myself to get to grips with the Assembler (after cassette)?

I have a tip for all Atari Viding Manager owners. It concerns the annoying inverse video (static) problem on Japan type printers.

Having spoken to Atari's Helpline, who verified that it was not suitable with an early software fix, I decided to have a go on the hardware front.

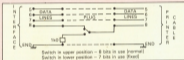
The solution lies in the fact that the characters are sent to the printer in inverse Atari codes. That is, decimal 129 to

255. These generate a 1 in the eighth bit of the parallel interface.

So by grounding the data 8 wire in the printer cable the eighth bit now becomes a 0 and the printer receives inverted codes from 0 to 128.

A miniature single pole double throw switch now resides in my printer plug resulting in 7 or 8 bit operation in suit any program.

I hope this modification is of some use to other readers with this problem. - **R.B. Moss, Hatfield, Cheshire.**



start an existing DOS 2.5.

I am very disappointed at this because I think there is a lot of difference between three pounds and one pound. Atari software isn't cheap and at last I thought I might get something of the right price for a change. - **E. Green, Leicester.**

We are offering DOS 2.5 on a disc free with our Disc Doubler. See Page 60.

Lusting after Elite

ALTHOUGH there are thousands of computer games available it's one I find me I really like.

Recently however I discovered an excellent game on my friend's BBC Micro - Acromath's Elite.

Now I've heard they've started to produce versions for other micros. Obviously what

I'd like to know is if there any chance of an Atari version? - **D. Harrison, Redcar.**

We've heard a rumour that an Atari version is being negotiated. For a similar game while you're waiting try Star Raiders.

Incidentally, the rumour suggests a 68000 version called Star Rider.

Upgrading the 520ST

I AM glad that someone has started a British magazine which is Atari orientated and is easily available at most newsagents.

I have several points that need to be clarified and so I decided that your column might be able to help. I have owned an Atari 800 for three years and I am very interested in the new ST series.

However after contemplating

buying playing an order I have decided that I need to have available the answers to the following questions.

First of all, if I purchased a version of the 520ST with a disc orientated DOS could I upgrade it to a ROM version when the ROMs become available?

Secondly, does the ST manual contain a thorough memory map or will I have to purchase one when one becomes available?

Finally, in my collection of 300 magazines there is not one review of 486 Personal Basic. Do you know where I might be able to find out about the standard, if not the ST's, version of Personal Basic?

Having already written to Atari (UK) and only receiving their standard sales letter, I would be very grateful if you can help me. - **Jason Hopkins, Leicester.**

ROM upgrades will be available to purchasers of

disc-based Gem systems, probably in the autumn.

The answer to your second question is not known at present. The Basic manual might contain some form of memory map, but the Gem manual certainly doesn't.

We don't know of a Personal Basic review either. By writing to Digital Research themselves.

Atari link-up

I HAVE an Atari 400 and am eagerly going to buy a 6502M when it is released.

I would like to know if there is any way I can connect these two together for a computer link-up. — **Peter Dunlop, East Hillside.**

■ You can connect the two machines via the joystick ports to send information from one to the other.

However you'll be able to use the same cartridges or discs that you've used on your 400.

Of course this assumes that the 6502M ever sees the light of day.

User group needed

LAST Christmas I treated myself to the 6002 7050 disc drive and the 1027 printer. It is all very confusing, but I am enjoying myself enormously trying to understand it all.

I would be very grateful if you could possibly help me with the following:

- How do I find out if there is and/or user group in my area?
- Could you advise me the best software package to input separate 12 month's sales figures for 1984 with the annual total? — Then as each month's 1985 figures are fed in show the corresponding 1984 figure, calculate the moving annual total and project what the 1985 total figure will be. — **F.J.K. Savage, Leeds.**
- There doesn't seem to be a user group in the Leeds area,

but try calling the Atari Helpline just in case they've recently received news of one.

You need VisiCalc or Symphony to do what you require. VisiCalc is not as good as Symphony but will do what you want with no problems.

Looking for a book

IN the June edition of Atari Over there was the listing of a game *Submarine* by Minor Apps, one of 40 educational games listed in a book published by Granada Collins.

So far I have been unable to obtain a copy of this book, and I wonder if you can tell me where I may obtain one. — **R.H. Cook, Leicester.**

■ Any decent bookshop should be able to order it for you.

... and some software

I WOULD like to congratulate you on a fine magazine for the Atari. I've got it on presentation (also subscription) so I've left out about the lack of support the Atari seems to get.

On a recent visit to Specs I

found they stocked the 60001, but little software, yet for the Commodore and Spectrum there was plenty.

What is the point of stocking the hardware if you don't stock software? There are many products for the Atari available by mail order, the problem being that unless you have tried the product before you buy it you can be very disappointed.

So, mates, please give the support the Atari and its owners deserve. — **P.D. Little, Carlisle.**

Failure to save

I HAVE an Atari 6002, having upgraded from a 400. The step in the available RAM has increased my programming skills.

So I wonder if you could tell me if there is an additional RAM pack for the 6002, or hopefully better if you post that point. Not only RAM — is there one for ROM? Also do you know if there are any programs available to increase the disc's rate as the 1010 data speeder? — **Craig Bramble.**

■ ROM is expanded via the cartridge port on top of the machine. At the moment 84K is the maximum for an 6002.

in this country.

Basic rate on the 1010 recorder can be changed up to about 800 baud from its current 600 baud.

Beyond this, reliability suffers severely. Programs have appeared in the computer press to achieve this but if any of our readers have written one we'll be glad to take a look at it.

Packing in the RAM

I HAVE an Atari 6002 and a 1010 tape recorder, but I cannot save programs that I have typed in. Can you please help me so that I can save great programs like your *Scrabble* on tape? — **Spide Mawson, Hinxley, Aberdeenshire.**

■ Unless you have faulty equipment there should be no problem.

With a program in memory and the Ready prompt on the screen, press the Record and Play buttons together on your 1010 (the type CS&AS and press Return twice. The program will then be saved to tape.

To load it back in, re-wind the tape, press Play on the 1010 and then type LOAD and press Return twice.

MORE HAPPENING ON DISC

I WRITE to correct what I feel to be a misconception in your answer to Nigel Hunt (Mailbag, July 1985).

You are wrong in saying that games on tape and the same game on disc are of the same size. Zaxxon was specifically mentioned, and in this case the disc version contains mazes and movement in 3D in the daylight screen which the tape version lacks.

Now without getting too technical, the disc format for such a game does not contain any form of DOS.

Instead the first 6 bytes of sector 1 contain firstly a device byte, then the number

of 128 blocks of memory to load, then the memory address to start the load in (also device), and finally the initialisation address, again in 6-bit format.

The operating system extracts this information and proceeds to load the indicated number of blocks.

This is the same format as used for a disc tape. However it does not take any account of any protection scheme that may be present.

Now such a scheme is called requested as each block is loaded in one by one serially and it is only loaded, so the disc requires no directory nor VTDC, so no DOS needs to be loaded to handle these requests.

A basic load file on the other hand requests both. Such a file is called a linked file, the main difference being that such sector only contains 128 bytes of program with the last 2 bytes containing information about the number of bytes in that sector, the file number and where the next sector is to be found on the disc. No doubt this will be covered in these pages in the future.

Information from "De-Atari" and "Technical User's Notes", although both are heavy reading.

Many thanks for your support for the mail editor's home computer — **Darryck Cusker, Hordley.**

ZOOMSOFT

HOMeward

The personal **WORD PROCESSOR 1984** outstanding software **AWARD**

Simple versatile effective. **HOMeward** is a writing tool designed for the home. It offers the power of a sophisticated word processor without the complications. Use **HOMeward** to write school assignments, shopping lists, letters, business memos and reports. **HOMeward** makes putting your ideas on paper a snap.

An easy to follow audio cassette will introduce you to **HOMeward** and take you step by step through its operation. No complicated commands to memorize, so anyone in your family can learn to use **HOMeward** in a matter of minutes. The menu features **ICONS** (pictures).

These **ICONS** make **HOMeward** a joy to use.

Other features include **MOVE TEXT/ COPY TEXT/ DRAGE TEXT/ INSERT BRASED TEXT/ FIND/ FIND and REPLACE/ INSERT DOCUMENT/ INCLUDE DOCUMENT/ UNDERLINE TEXT and JUSTIFICATION**. A full 80 characters per line enables you to view your documents as they will appear in printed format. Use with any printer. Many other fine features make **HOMeward** a great **WORD PROCESSOR**.

DISK £48.95

ARCADE

SHOULDER DASH C/D	14.95
OIL'S WELL C/ART	14.95
80'S GUEST C/ART	14.95
MINIROBOT C/DC	14.95
MINOR 2048er C/ART	9.95

SUBLOGIC

Flight Simulator II	58.95
---------------------	-------

WE'LL INCREASE YOUR STORAGE AND TRIPLE YOUR SPEED!

Introducing the **US DOUBLER**. **US DOUBLER** increases your storage to 180K, and is totally compatible with other double-density disks, all DOS for ATARI, and all ATARI 1050 disk drives. New **SPARTA DOS CONSTRUCTION SET** will triple your speed. That's double-density, ATARI 1050 low and a half times density/ and single density. Time/ Day/ Date on your file Ram. Disk for 86 models. **FREE SPARTA DOS CONSTRUCTION SET** when you buy the **US DOUBLER!** a hardware/software combination, installation required, complete instructions provided.

£78.95

THE ULTIMATE WAR GAME SIMULATIONS!

STRATEGIC SIMULATIONS

Broadside	£41.95
Begins	£41.95
Field of Fire	£41.95
Objective Korak	£41.95
50 Mission Crash	£41.95
Colonial Conquest	£41.95
Computer Quareback	£41.95
Generators Warrior	£41.95
Six Gun Shootout	£41.95
Rails West	£41.95
The Cosmic Balance	£41.95
Cosmic Balance II	£41.95
Breakthrough in Ardennes	£82.95
Operation Market Garden	£82.95
Carrier Force	£82.95
Kampgrupper	£82.95
Reforger 66	£82.95
Computer Ambush	£82.95
War in Russia	£82.95

All products are available from:

SILICA SHOP 01-308 1111, SOFTWARE EXPRESS 021-384 5085, SILICON CHIP 0753 79635, A.S. WOTTON & SONS 0275 214115, PEARS ELECTRONICS IRELAND 01-76872/3/4, RADFORD HI-PI Ltd. 0272 428247 MICROBYTE 051-820 8823, THE ARMY SHOP SUNDAY SOFTWARE and other good computer shops.

If you have problems in obtaining any of these products then you can order direct. All cheques/P.O.s should be made payable to **ZOOMSOFT**. Please

ZOOMSOFT

46 Huntsworth Mews, London N.W.1 6DB

MAGNIPRINTII

THE ULTIMATE GRAPHICS PRINTING PACKAGE

Print your ATARI graphics like you've never seen before! **MAGNIPRINT II** is the most powerful print utility available for your computer. It is the only software that can accurately print **GTIA** modes with 16 shades. Print all graphic modes. Can blow up your pictures to wall sized posters. Special option lets you centre the picture on the page. Accepts your own graphic creations or those created with **MICROPRINTER**, **FUN with ART**, **PAINT**, **SUPER SKETCH**, **ATARI TOUCH TABLET**, **BOALA PAD**, **ATARI LIGHT PEN GRAPHICS**, **BIODRAPH**, **GRAPHICS MAGICIAN**, and many others. Includes many beautiful sample pictures. Add text to your pictures. Allows you to print the whole screen or any selected portion of the screen.

FREE with every **MAGNIPRINT II** **PRINTALL**. **PRINTALL** prints your programs and files just as they appear on your screen. It clearly prints all ATARI graphic characters including **INVERSE** characters. This alone is worth the price.

Disk £35.95

SEE YOUR LOCAL DEALER NOW!

TRADE ENQUIRIES Tel: 01-723 0562

FREE T-shirt for all new

Here's a really unbeatable offer for all Atari users!

This top-quality T-shirt, woven in an attractive shade of grey with the Atari logo in red, is a genuine American 'Fruit of the Loom' product, made from 50% cotton/50% polyester.

Worth £4.25, it will be sent FREE with every new subscription ordered on the form on the right!

The T-shirts are also on sale at £4.25. Please order on our official order form.

Made in three sizes:
Small - 34"-36"
Medium - 36"-38"
Large - 38"-40"



Keying in long programs too much of a chore?



Then give your fingers a rest by sending for our monthly disc, containing all the programs from each issue of Atari User. See order form opposite.

ALBERT: *Assassins* This machine code program brings action. **Frank Gambler:** Your money with the best machine simulator. **Starbuck:** Complex patterns made easy. **Power Box:** Sixteen-bit perfect score programs for playing eyes. **Bricklay List:** Demonstration program. **Master 0001:** Puzzles and adventures. **Travis 0001:** Demonstration program.

JULY: **Bank Run:** Finance the deserted city and land safely. **Discussions:** Find out what's going on deep inside your Atari. **Treasure Hunt:** Use logical thinking to find the treasure. **Personal Generator:** Keep generating passwords all you find out your file. **Keypoint:** Connect your microdot on rings. **Quadrant:** Can you cut out the stars of space in the belly?

JUNE: **Big Jump:** Guide the frog across the road and then to his home in the center of the muddy stream.

00001: **Run Power:** Use the extra bits of memory to go off, or use the drawing routine to produce some pretty displays. **Submarine:** Battle the submarines.

For the Starbuck: Draw pretty pictures with only a couple. **Random Passwords:** Get random numbers from machine code. **Fifty Fifty:** Can you keep the Fifty Fifty from losing it this year?

MSD: **Makeout Train:** The combination of color, sound and animation makes this early learning game a winner with children. **Sound Intersaving:** Let your neighbors party with these ready-made sounds. **Home Date:** Display and run machine code programs with the revolutionary loader. **Attack Squalls:** A fun action game to keep you on your toes. **Random Power:** Get four for your machine code using **Binary** Use this program to convert binary numbers to decimal notation.

SEPTEMBER: **Run Run:** Help Homer the pig knock the man (monster) around. **Data Maker:** Convert your machine code numbers to ASCII characters. **Display List:** Demonstration program. **Screen Change:** Jump your Mode II screen to a 1024 pixel. **Rocky:** Solve the Rocky problem.



Double the capacity of your discs with this money-saving offer!

DISK DOUBLER

Allows you to cut out a correctly positioned notch which tells you to use BOTH sides of the disc - and HALVE your costs. Extremely well made to a compact design, it has a unique position guide to ensure pin-point accuracy!

£9.95

Free delivery with 100-25-odd order

New subscribers to

ATARI USER

Back issues



£1.25

May issue: Profile of Jack Tramiel, review of the new machines, Atari Sports Advertising, Alphabet Train, Haze utility, Software reviews, Sounds, the 4000, Memosave, Atari Insights - regular series of tutorials: Bit Wis, Beginners and Graphics, PLUS News and Mailbox.

June issue: In-depth analysis of the 1300K, Software, Advertising, Random numbers, Software reviews, Ping Pong, Microsave Sounds, Atari Insights - regular series of tutorials: Bit Wis, Beginners and Graphics, special 12 page feature on Communications, PLUS News and Mailbox.

July issue: Disassembly, Book Fun,

DOS 2.5, 17 Commandments, Advertising, Display List Tutorial, Software Reviews, Power Functions, Tramiel Hunt, Keyboard Sounds, Microscope, Insights - Regular series of tutorials: Bit Wis, Beginners and Graphics PLUS News and Mailbox.

August issue: In-depth analysis of the 1300K, program protection routines, Fruit Combler, Assembly, Touch Teller programs, but look at Logo, Kastle 1990, Doc 125 complete color Display List tutorial, Microsave, Software reviews, Insights - regular series of tutorials: Bit Wis, Beginners and Graphics PLUS News and Mailbox.

Protect your CDROM without heavy dust cover made of soft, plastic, clear and water-resistant vinyl, bound with strong cotton and decorated with the magazine's logo.



Only £5.95

How to keep your collection complete

Bound in chronicle from past and future the Atari User logo, the hardware leader will hold a year's supply of the magazine firmly secured in place with metal ends.



Only £2.95 (UK)

Look what's coming in Atari User!

- Lots of easy-to-follow features on everything to do with Atari computing. Whether you're a beginner or an expert, you'll always find something to delight and intrigue you.
- In-depth independent evaluations of all the new hardware add-ons now being developed to make your Atari much more powerful and much more versatile.
- Reviews of all the very latest games, educational and business programs now being produced for the Atari.
- PLUS lots of things you will be able to buy in yourself - games, utilities, graphics.

ORDER FORM

All prices include postage, packing and VAT. Valid to September 30. All mail prices an application.

Please enter your requirements by ticking boxes £ P

Annual subscription

UK & EIRE £12 (including credit)	7681	<input type="checkbox"/>
Overseas (Surface) £20	5922	<input type="checkbox"/>
Overseas (Airmail) £40	7028	<input type="checkbox"/>
Free 7 days - credit card required	12511	<input type="checkbox"/>

Continued with issue TOTAL _____

Back issues

1981	7681	<input type="checkbox"/>
1982 (UK)	5922	<input type="checkbox"/>
1982 Overseas Surface	7028	<input type="checkbox"/>
July 1982	7027	<input type="checkbox"/>
Aug 1982	7028	<input type="checkbox"/>

TOTAL _____

Monthly Disc

May issue	7617	<input type="checkbox"/>
June issue	7618	<input type="checkbox"/>
July issue	7619	<input type="checkbox"/>
August issue	7620	<input type="checkbox"/>
September issue	7621	<input type="checkbox"/>

TOTAL _____

Miracle Modems including software and hardware

£199 UK	7681	<input type="checkbox"/>
£200 Overseas (by mail)		<input type="checkbox"/>

TOTAL _____

T-Shirt

Small	7687	<input type="checkbox"/>
Medium	7688	<input type="checkbox"/>
Large	7689	<input type="checkbox"/>

TOTAL _____

Dust Cover (1300K only)

£1.95 UK	7681	<input type="checkbox"/>
£4.95 Overseas		<input type="checkbox"/>

TOTAL _____

Binder

£2.95 UK	7681	<input type="checkbox"/>
£5.00 Overseas		<input type="checkbox"/>

TOTAL _____

Disk Doubler - free DOS 2.5

£2.95 UK & Overseas	7681	<input type="checkbox"/>
---------------------	------	--------------------------

TOTAL _____

Please tick please indicate method £ P TOTAL _____

Access/Mastercard/Visacard

Bankorder/Tele

Cheque/PO made payable to Database Publications Ltd

Name _____

Address _____

Signature _____

Send the Atari User, FREEPOST, Europe House, 68 Chesham Road, Hazel Green, Stourport SP7 8AN.

(No money needed if posted in UK)

Please allow 28 days for delivery

Don't forget to include your credit card number and full address.

Order by cheque (UK £48 017)

- by Postal Ray '88 (within No. 01624282)

- by Colman-Godd (within No. 01624282)

COMMODORE 64/SINCLAIR QL

2,000 Screen Arcade Adventure

ARRIVING SOON

FOR THE ATARI ST



MICRODEAL

INTERNATIONAL KARATE



**..And you thought
you'd seen a Karate game**

As you know, like the Martial Arts, Perfection
is the only accepted standard, so play nothing
until you play — SYSTEM 3's — INTERNATIONAL KARATE

For the Spectrum,
C.64, Amstrad and
all 48k Ataris at ONLY

£6.50

SYSTEM 3 SOFTWARE, SOUTHBANK HOUSE, BLACK PRINCE ROAD, LONDON SE1 TEL: 01-785 6171, Ex. 68